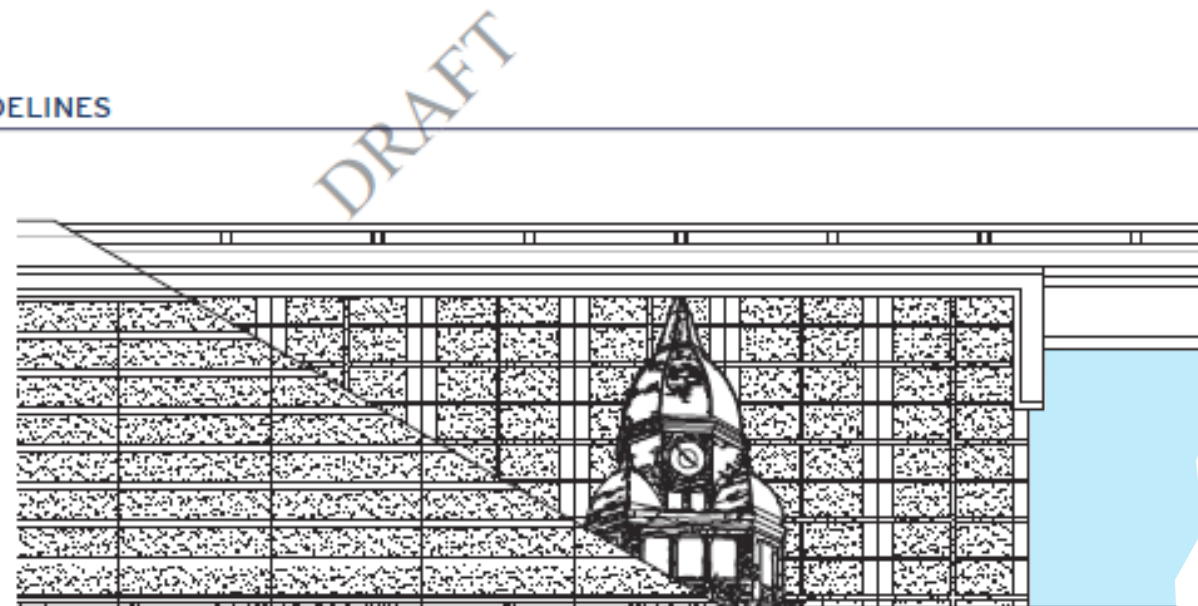


# Base Line TXDOT Treatment

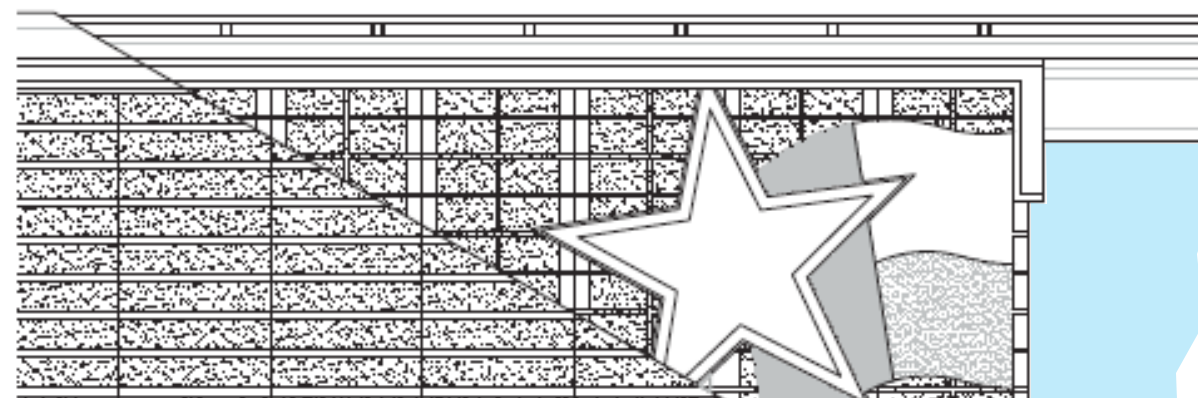
## IH-35E Corridor AESTHETIC DESIGN GUIDELINES

### Notes:

- Graphic Panel to be perforated aluminum panel, precast or precast formliner.
- Graphic Panel to be confined to abutment panel region only.
- Graphic panel to be offset from abutment panel a minimum of 2" and a maximum of 8".
- Final art work for graphic panel option selection to be coordinated with municipality or institution.
- Method of application to be consistent through the corridor.
- Artwork option to be mirror image for opposite side abutment.
- Digital artwork for proposed option to be provided to contactor.

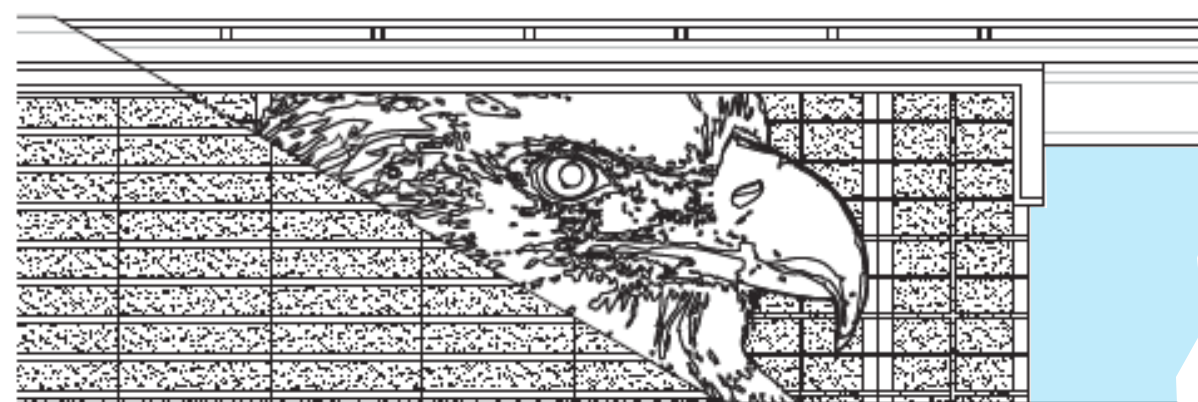


Court House Option Elevation



Lone Star Option Elevation

\*For the opposite side abutments do not mirror image

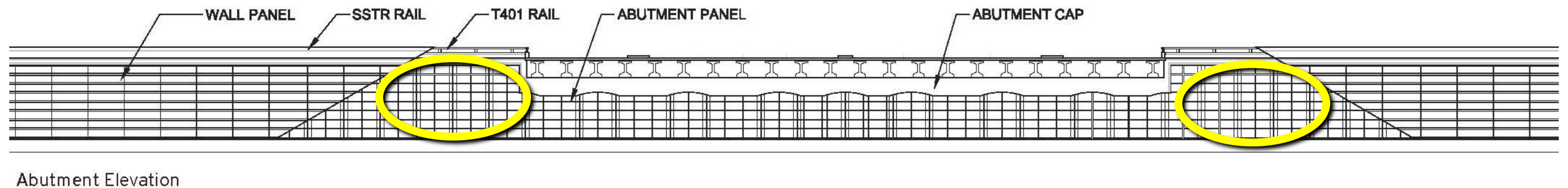


Eagle Option Elevation

Retaining Walls - Accent

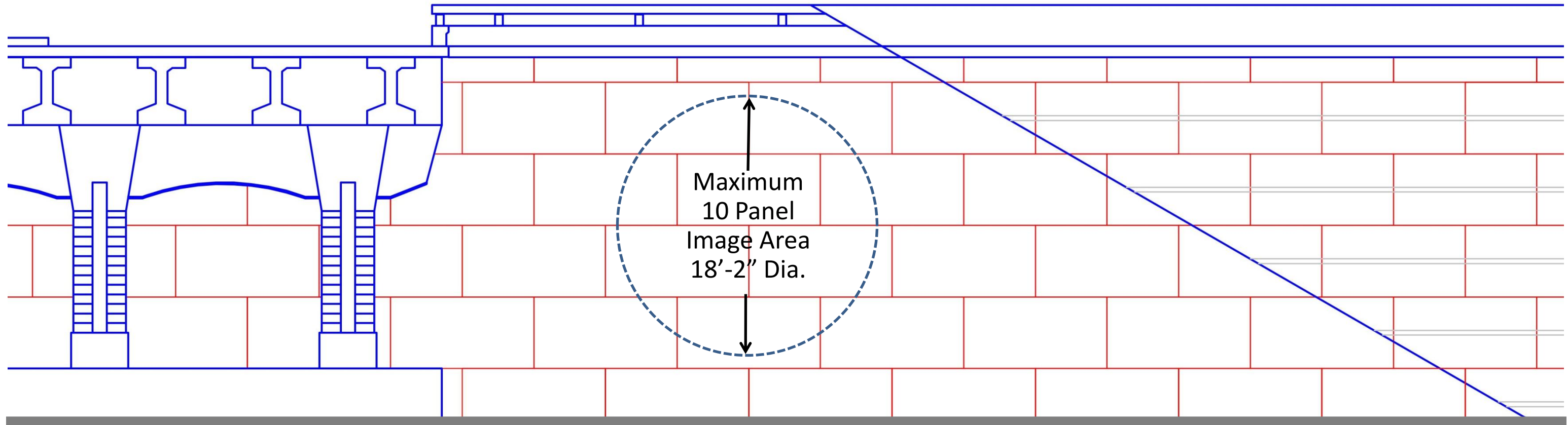
Technically, these graphics are reserved for enhanced interchanges on wing walls parallel to main lane overpasses at enhanced interchanges. North Texas Boulevard has not been so designated and is a cross street overpass. This does not qualify for TXDOT participation concerning graphics.

# Base Line TXDOT Treatment Walls



 Recommended Location for Community Identity Graphics

# Abutment Wall Community Identifier Options



UNT Eagle-Texas Flag and  
Hurley Administration  
Cupola



UNT Eagle and Hurley  
Administration Cupola



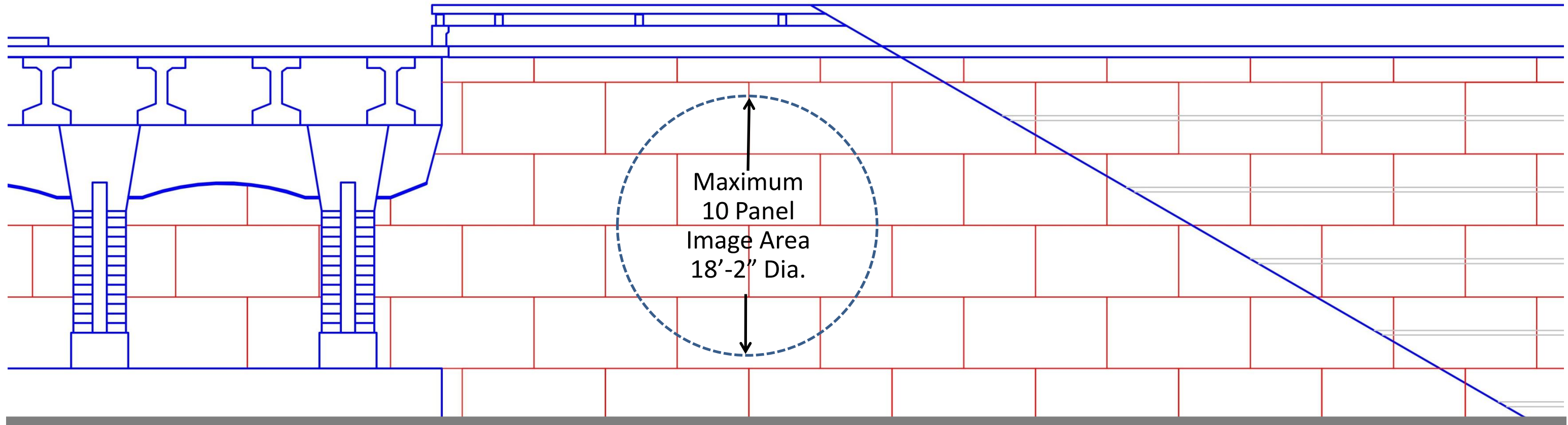
UNT Eagle-Texas Flag-  
Music-Little d and Denton  
County Courthouse



UNT Eagle-Texas Flag-  
Music and Denton County  
Courthouse Cupola



# Abutment Wall Community Identifier Options



Performing Arts-1



Performing Arts-2-Murchison  
Performing Arts Center  
Pentagon Window

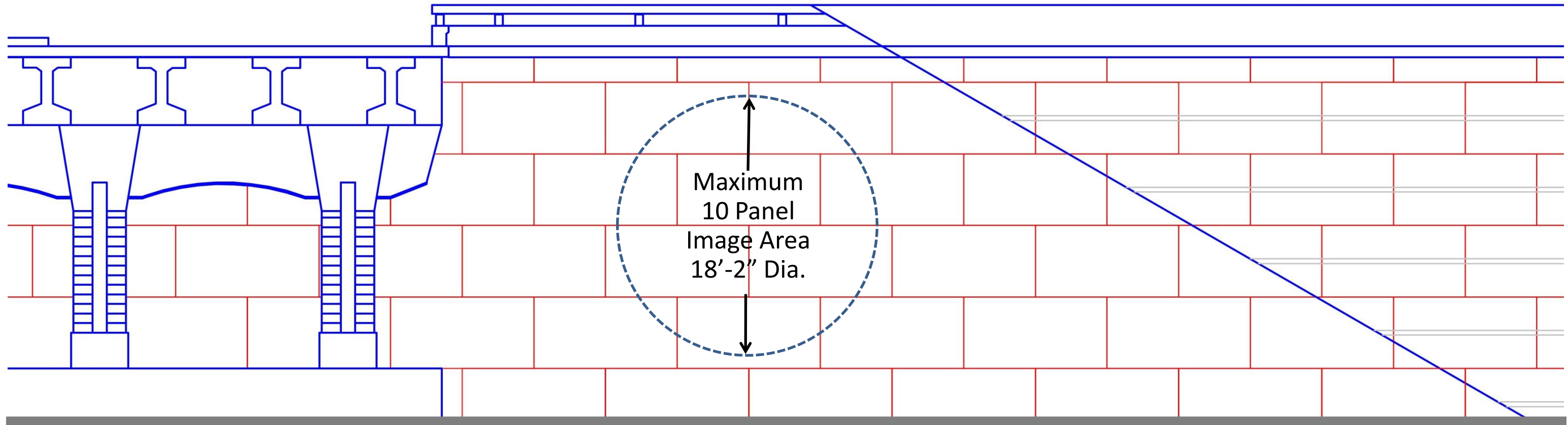


Blues Brothers  
Tom Malone and Lou Marini  
UNT Alumni



Roy Orbison and Meatloaf  
Former UNT Students

# Abutment Wall Community Identifier Options



Denton County Courthouse  
Cupola-Texas Flag-Music  
Heritage



Denton County Courthouse-  
Texas Flag-Music Heritage

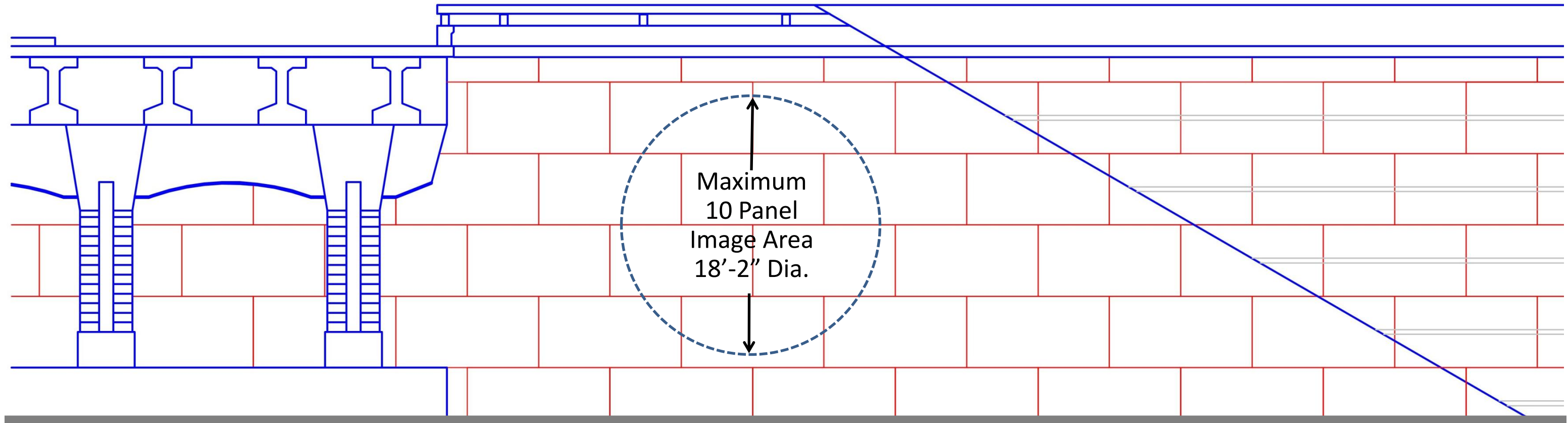


Denton County Courthouse  
Cupola-Texas Flag



Denton County Courthouse  
Cupola-Texas Flag

# Abutment Wall Community Identifier Options



Music Heritage-Murchison Performing  
Arts Center Pentagon Window-Texas  
Flag-Theater Comedy and Tragedy Masks



Simplified: UNT Eagle-Texas  
Flag-Music and Denton  
County Courthouse Cupola



Truck Manufacturing and  
Hauling Industry



Truck Manufacturing and  
Hauling Industry-Texas Flag



# Wall With Graphic Image - Example

18' Diameter Image Applied to Model of Finished Wall.



# Wall Graphic Material - Examples

These are examples of decorative Concrete Formliner Graphics and Cut Steel Plate Graphics for reference.

## Concrete Formliner Graphics



Layered Metal Graphics



Single Plane Metal Graphics

## Cut Steel Plate Graphics

