

IFB 6612 Electric Meters and Equipment

JR Richardson - DME

January 22, 2018



Background:

- ▶ The previous 3 year Supply of Electric Meters and Equipment for DME via RFP #5584 expired October 7th 2017.
- ▶ IFB #6612 was advertised October 16th 2017, proposals were received November 7th 2017.
- ▶ Bids have been reviewed, tallied and evaluated.

Key Points:

- ▶ We currently have over 53,000 electric meters in the city
- ▶ 29,658 are AMI remote disconnect residential
- ▶ 19,006 are AMI non-disconnect residential
- ▶ 4,498 are Commercial AMI meters

Key Points:

- ▶ IFB 6612 requested bids by section for the following equipment due to the different categories of equipment:

Section A: Electric meters with the AMI board

Section B: Photovoltaic (solar) meters with AMI board

Section C: Electric meter sockets

Section D: Secondary instrument rated transformers

Section E: Primary instrument rated transformers

Section F: Trilliant secure mesh AMI equipment

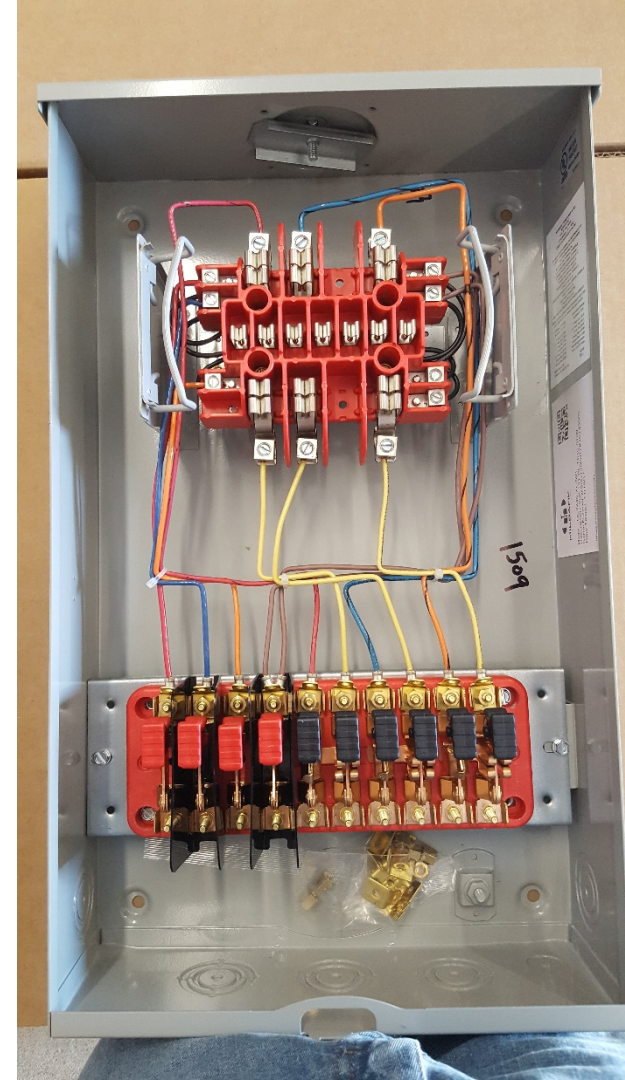
Electric Meters

- ▶ DME purchases electric meters to register energy quantities used by Residential and Commercial customers.
- ▶ Typical Residential customer electric meters register energy usage or kWh consumption.
- ▶ Typical Commercial customer electric meters also register and track the customer's energy demand or kW.
- ▶ Electric meters are procured and installed at all new customer installations, and to use for maintenance and replacement of older or damaged meters.



Meter Sockets

- ▶ DME uses instrument rated electric meter sockets with specific color coding to aid with properly identifying each of the potential and current phase conductors and associated test switches



CT's and PT's

- ▶ Instrument Rated transformers are used for electric metering services that are too large for a self contained meter, and to meter customer loads that require metering rated current transformers to properly measure consumption.



AMI Equipment

- ▶ DME uses Trilliant Inc. AMI Equipment for it's AMI system.

AMI equipment includes:

Gateways

Extender Bridges

Power Supply Units

Repeaters



Funding:

- ▶ Funding for the electric meters and equipment is approved as part of the DME Metering division's operating budget.
- ▶ Account numbers are:
 - 604235500 (Three Phase Meter),
 - 604236500 (Single Phase Meter),
 - 604237500 (Instrument Rated Equipment),
 - 604238500 (AMI & WAN Equipment).

Recommendation

- ▶ Staff recommends approval of the lowest vendor for each of the IFB #6612 bid sections, in the total annual not to exceed meter bid amount of \$1,429,750 for each of the three years bid timeframe.



JR Richardson