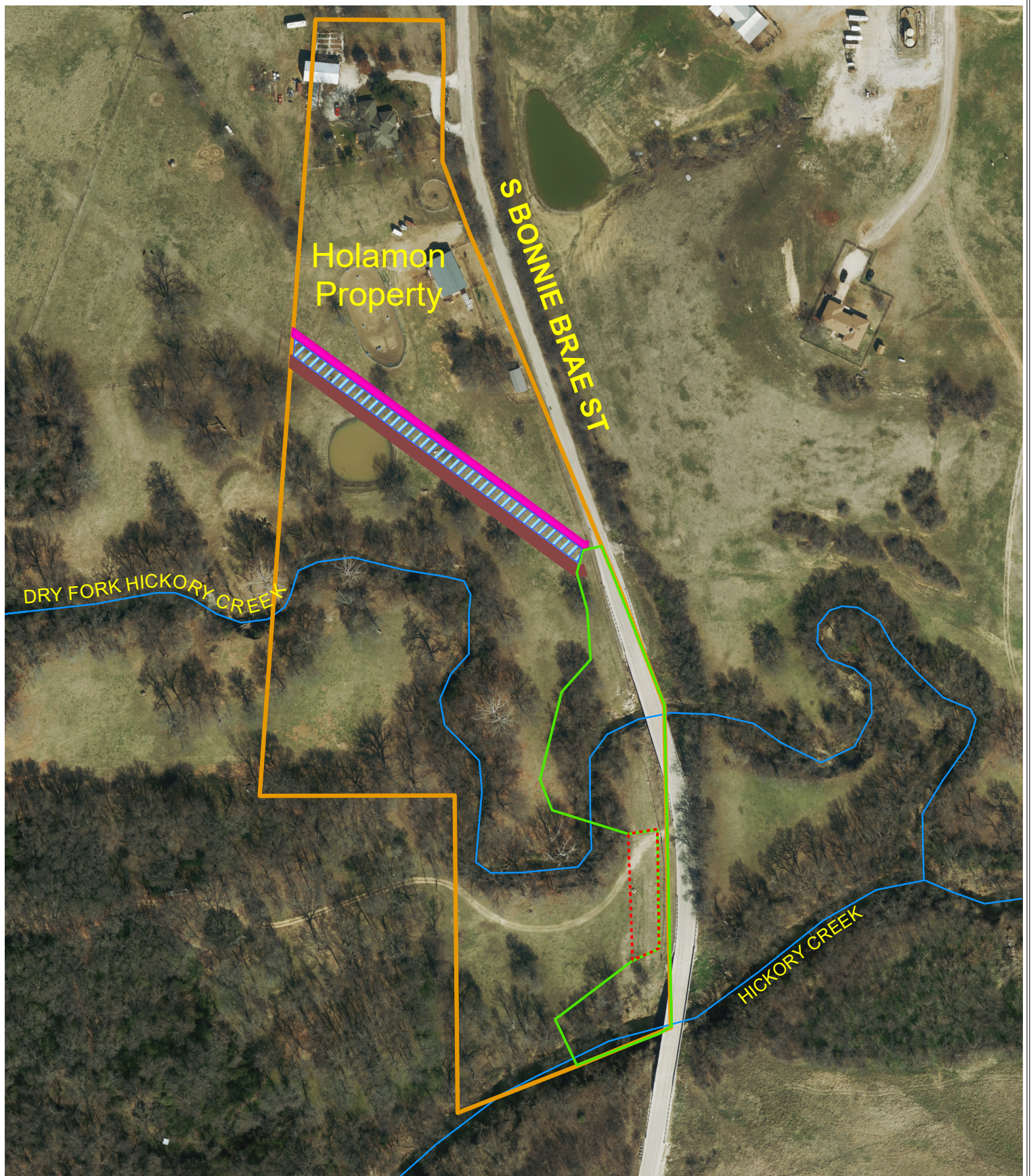







CITY OF DENTON

EXHIBIT 3 attachment to AIS Holamon Site Map



-  Existing 20' Wide ALL Purpose Utility Easement
-  Proposed 10' Wide 0.128 Acres Sanitary Sewer Easement
-  Proposed 15' Wide 0.191 Acres Temp Construction Easement

-  Fee Simple 1.694 Acre Tract
-  0.186 Acres Access and Utility Easement

