

Landfill Cell Development

City Council Meeting
July 18, 2017

Solid Waste Overview

- Landfill Facility
 - Located at 1527 S. Mayhill
 - 6 phases: Each phase has multiple cells
- Process 250,000+ tons of refuse per year
 - Approximately 380,000 cubic yards (cy)

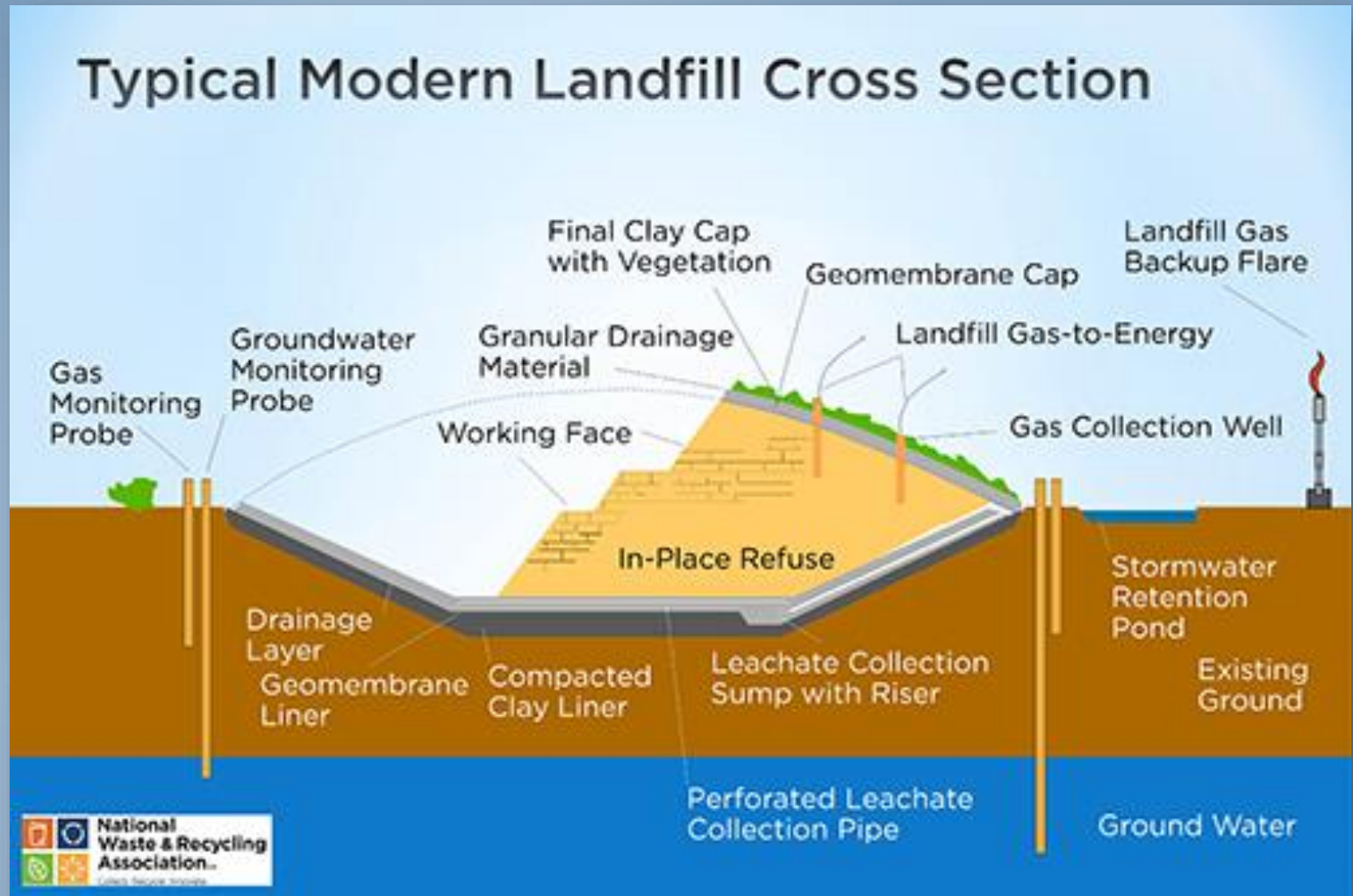
Status of Existing Cells

Currently Using 3 Cells

- Active cell capacity is 2.1 million cy
- November 2017 - 90-95% full
- New cell development takes 120+ days

Proposed Cell Development

- 3 cells
- 18.8 acres
- 2.4 million cy
- 6+ years of useful life



Requests for Proposal

- Hammett Excavation
- \$3.48 million award
- Budget - \$4 million
- Project ~134 days



Questions?