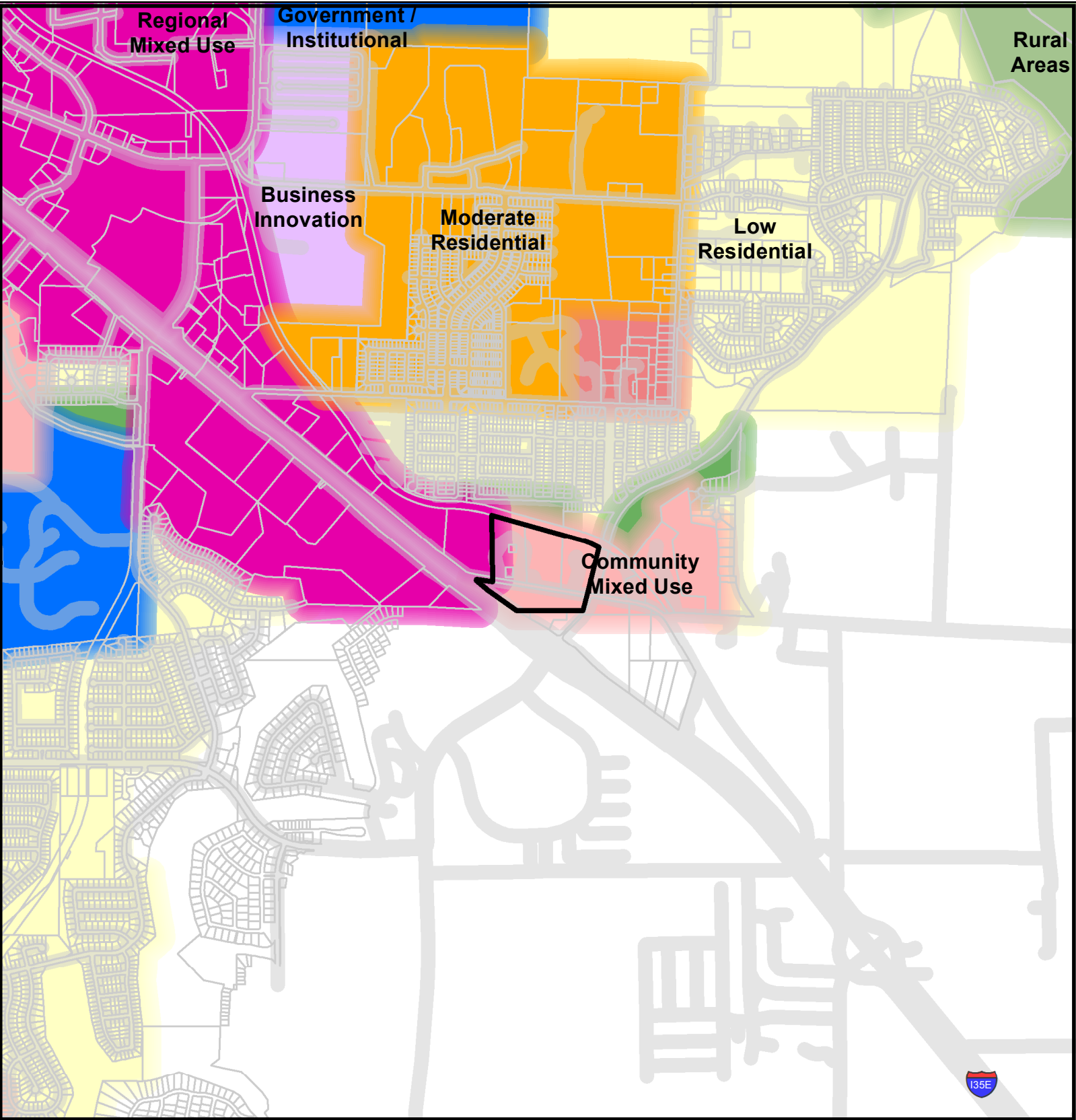


# Z17-0002

## Future Land Use Map



<div></div> SITE	<b>Future Land Use</b> <div></div> Rural Areas <div></div> Low Residential <div></div> Moderate Residential <div></div> Regional Mixed Use	<div></div> Community Mixed Use <div></div> Business Innovation <div></div> Government / Institutional <div></div> Parks / Open Space
<div></div> Parcels <div></div> Roads	<div>           N          W E          S       </div> <div>           0 500 1,000 2,000          Feet       </div> <div>   <b>CITY OF DENTON</b>          Development Services • GIS          Date: 1/30/2017       </div>	

The City of Denton has prepared maps for departmental use. These are not official maps of the City of Denton and should not be used for legal, engineering or surveying purposes but rather for reference purposes. These maps are the property of the City of Denton and have been made available to the public based on the Public Information Act. The City of Denton makes every effort to produce and publish the most current and accurate information possible. No warranties, expressed or implied, are provided for the data herein, its use, or its interpretation. Utilization of this map indicates understanding and acceptance of this statement.