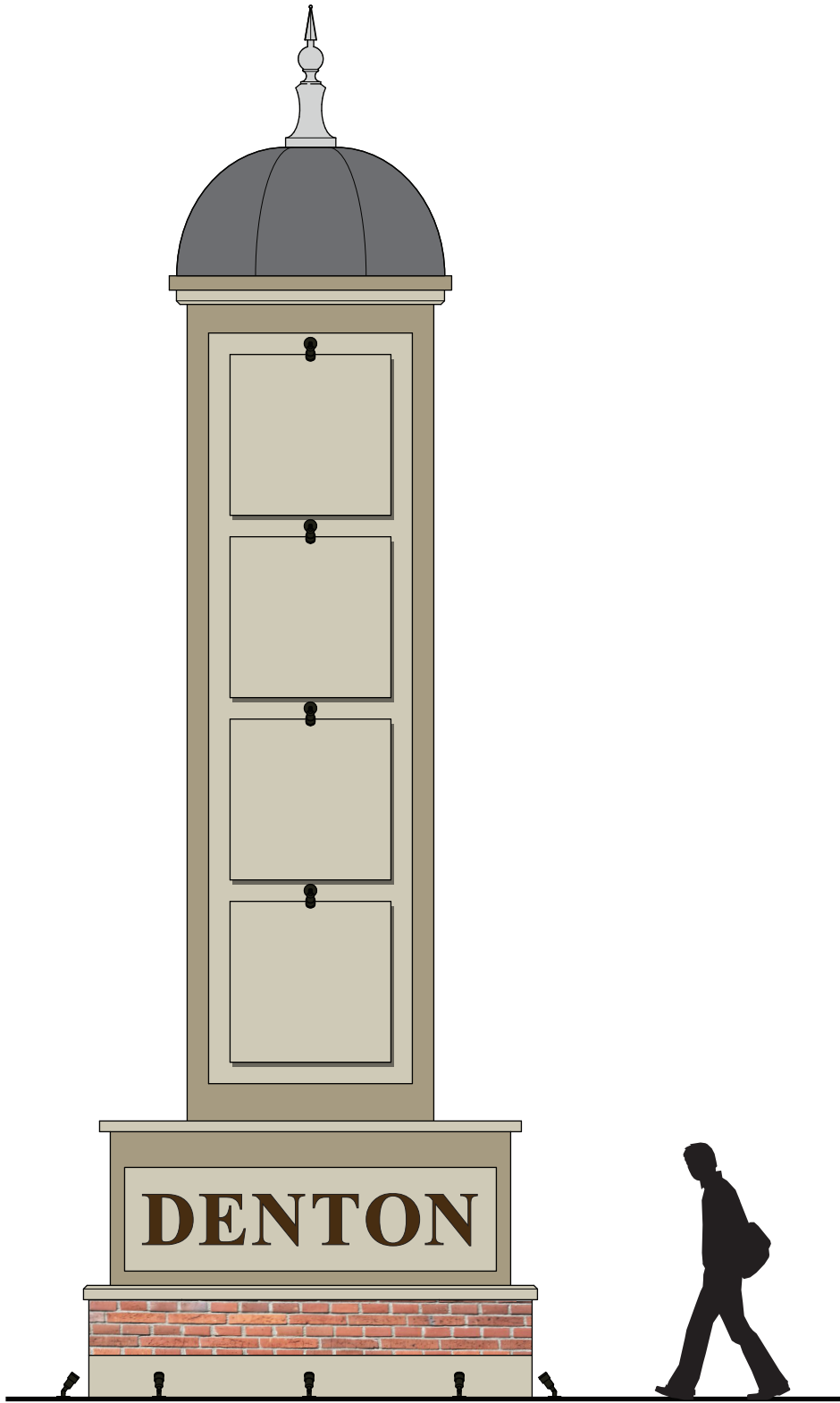


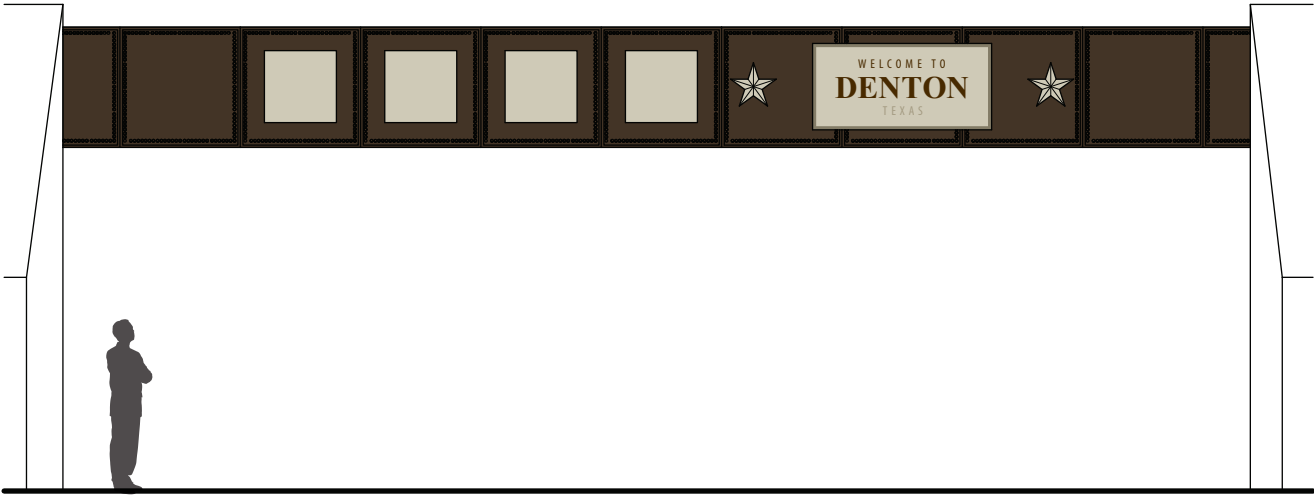
EXHIBIT 7

Denton, TX
Gateway Signage System

100% DESIGN INTENT DRAWINGS
October 14, 2016

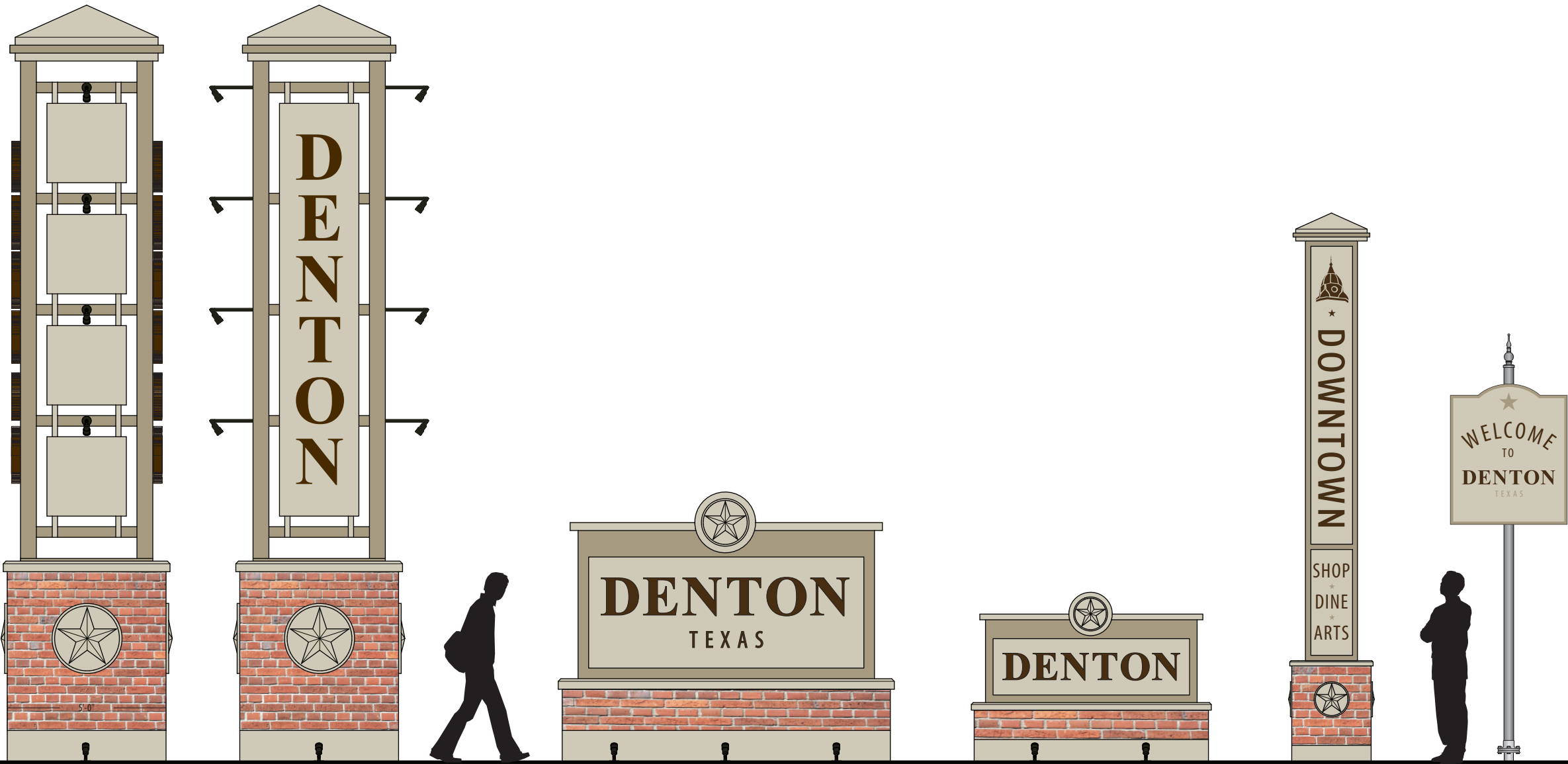


Largest Gateway
4-Sided



Railroad Overhead Bridge
1-Sided

SPECIFICATIONS			
<p>NOTES:</p> <p>1. Fabricator to verify the mounting conditions and provide a detail drawing for each mounting situation, prior to fabrication. Fabricator must obtain approval from the Designer or Client for placement prior to fabrication.</p> <p>2. Welds: All welds shall be ground smooth, paint all seams.</p> <p>3. Hardware: All exposed hardware shall be tamper proof fasteners.</p> <p>4. All exposed edges painted to match adjacent face.</p>			
<div><div>ENVIRONMENTS & EXPERIENCES</div><div><div>merJe</div><div>120 North Church Street Suite 208 West Chester, PA 19380 T 484.266.0648 www.merjedesign.com</div></div></div>			
DATE	8/1/16	CLIENT / PROJECT	
DRAWN BY:	KRD		
<p>These drawings are meant for DESIGN INTENT ONLY and are not for construction. Contractor shall verify and be responsible for all dimensions and conditions of the job. Contractor shall be familiar with the site and conditions it presents. This office must be notified of any variations from the dimensions and conditions shown on this drawing. Shop drawings and details must be submitted to this office for approval prior to proceeding with fabrication. All copy shall be proofread by client and legal requirements checked by legal department.</p>		DENTON, TX Gateway Signage	
		PROJECT NO.	
		SHEET TITLE	
REVISIONS	10/14/16	SHEET NO.	
		C.1	



Totem Gateway
4-Sided

Large Monument
1-Sided

Small Monument
1-Sided

Downtown Totem
4-Sided

Post & Panel
1-Sided

NOTES:
1. Fabricator to verify the mounting conditions and provide a detail drawing for each mounting situation, prior to fabrication. Fabricator must obtain approval from the Designer or Client for placement prior to fabrication.
2. Welds: All welds shall be ground smooth, paint all seams.
3. Hardware: All exposed hardware shall be tamper proof fasteners.
4. All exposed edges painted to match adjacent face.

ENVIRONMENTS & EXPERIENCES

merJe

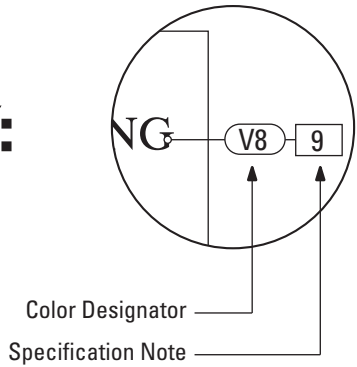
120 North Church Street
Suite 208
West Chester, PA 19380
T 484.266.0648
www.merjedesign.com

DATE	8/1/16
DRAWN BY:	KRD
These drawings are meant for DESIGN INTENT ONLY and are not for construction. Contractor shall verify and be responsible for all dimensions and conditions of the job. Contractor shall be familiar with the site and conditions it presents. This office must be notified of any variations from the dimensions and conditions shown on this drawing. Shop drawings and details must be submitted to this office for approval prior to proceeding with fabrication. All copy shall be proofread by client and legal requirements checked by legal department.	
REVISIONS	10/14/16

CLIENT / PROJECT	
DENTON, TX Gateway Signage	
PROJECT NO.	
SHEET TITLE	
Gateway Signage Overview	
SHEET NO.	
C.2	

EXHIBIT 7

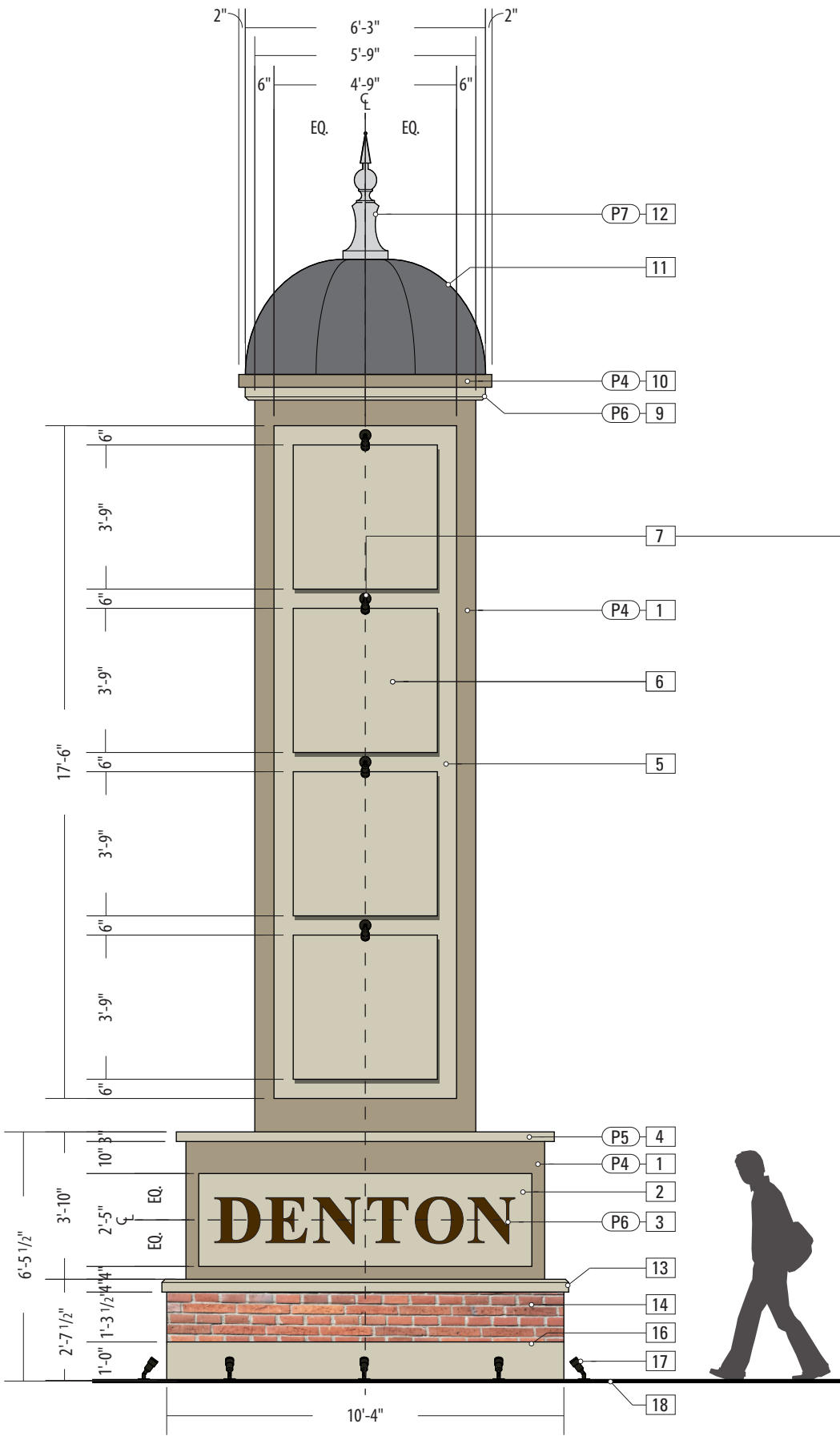
KEY:



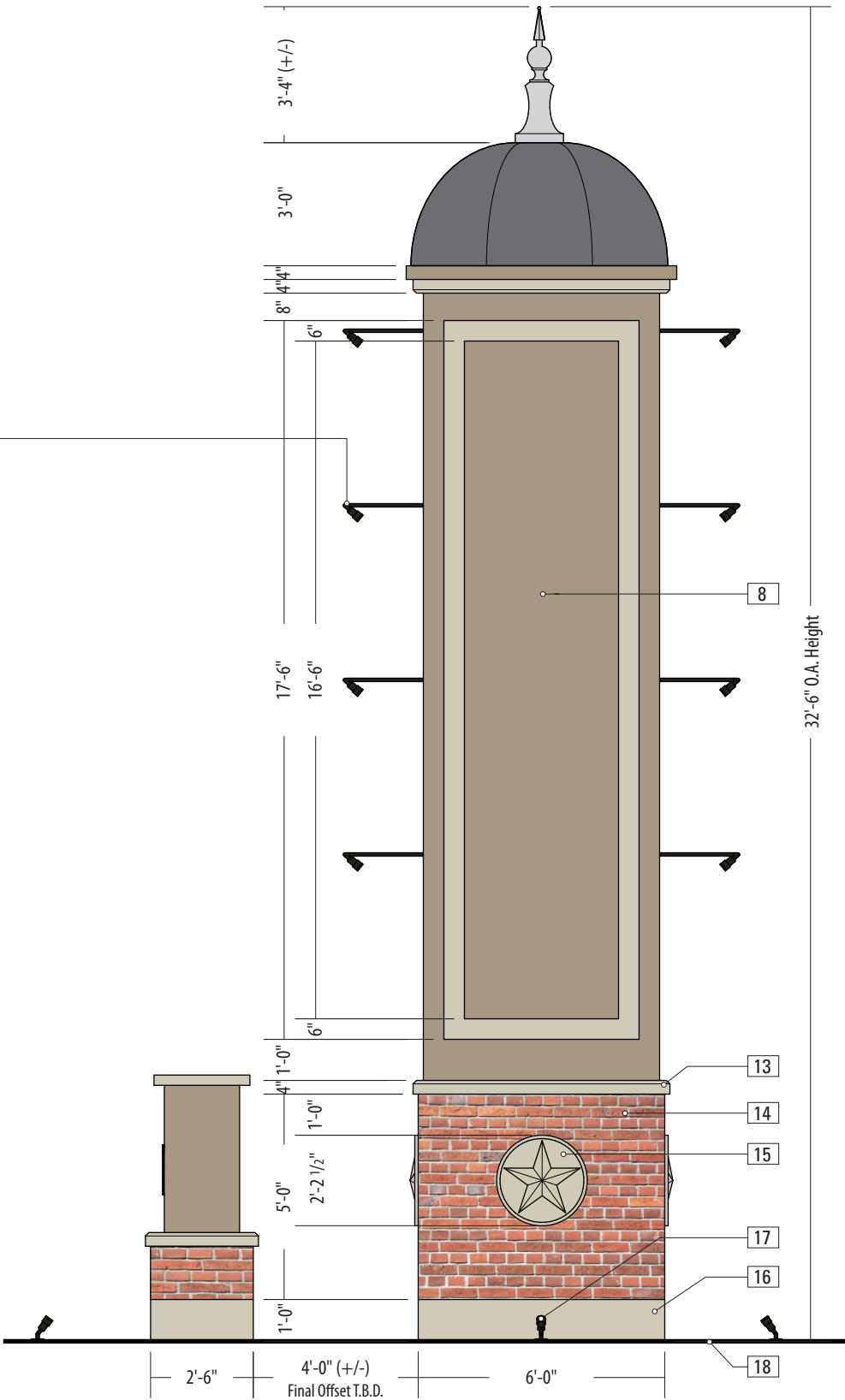
The Color Designator Chart is found in the Graphic Standards section.
The Specification Notation is found on the same page as the drawings.

D | Design Intent Drawings

EXHIBIT 7



1 Largest Gateway - Elevation - Front
SCALE: 1/4" = 1'- 0"



2 Elevation - Side
SCALE: 1/4" = 1'- 0"

SPECIFICATIONS		SIGN TYPE: Largest Gateway			
1. SIGN BODY - TYPICAL FABRICATION PROCESS: Fabricated Aluminum Tube Construction, Welded w/ Alum Skin EDGES: Square / Smooth SURFACE PROCESS: Paint all exposed surfaces with Matthews Acrylic Polyurethane, with clear coat satin finish. COLOR: P5 FASTENER: Mechanically Fastened Internally to Masonry Base	2. SIGN AREA - LOWER MATERIAL: Aluminum FABRICATION PROCESS: Fabricated Aluminum Pan Construction EDGES: Square / Smooth SURFACE PROCESS: Custom Dryvit® "Stucco" Finish to match Cast Concrete Icon Panels / Streetscape Plan, or chosen by Client FASTENER: Inset + Mechanically Fastened to Sign Body	5. SIGN AREA - UPPER MATERIAL: Aluminum FABRICATION PROCESS: Fabricated Aluminum Pan Construction EDGES: Square / Smooth SURFACE PROCESS: Custom Dryvit® "Stucco" Finish to match Cast Concrete Icon Panels / Streetscape Plan, or chosen by Client FASTENER: Inset + Mechanically Fastened to Sign Body	6. ICON PANELS MATERIAL: Cast Concrete Panel 3" Thk. (+/-) Concrete, color to match streetscape plan, or chosen by client. EDGES: Square IMAGE PROCESS: Custom "Embossed" Icon Per Client Artwork, Final Process Pending Material Sample + Approval by Client MOUNTING: Sub-Frame w/ Mechanical Fastener to Sign Panel		
3. LETTERING - DIMENSIONAL MATERIAL: 2" Deep Aluminum FABRICATION PROCESS: Fabricated Letter Construction, Non-Illuminated EDGES: Smooth COLOR: Paint P6 SURFACE PROCESS: Paint all exposed surfaces with Matthews Acrylic Polyurethane, with clear coat satin finish. FASTENER: Pin Mount w/ 1" spacer off 1st Surface of Lower Sign Area	4. SIGN CAP FABRICATION PROCESS: 3" High Fabricated Aluminum Tube Construction, Mitre-Cut + Welded w/ Alum Skin EDGES: Square / Smooth SURFACE PROCESS: Paint all exposed surfaces with Matthews Acrylic Polyurethane, with clear coat satin finish. COLOR: P5 FASTENER: Concealed Mechanical Fasteners to top of Sign Body	7. PANEL LIGHTING PRODUCT: Wall-Mount LED Accent Light w/ 24" Arm, Ext. Grade Spotlight, 3000k (+/-) Color Temperature "Warm White" SURFACE FINISH: Textured Black LENS: Frosted White (Diffusing) MOUNTING: Wall-Mount Arm and Base Plate, secured to Cross-Bracing of Structural Frame over each Icon Panel	8. ACCENT PANEL MATERIAL: 3" Deep Panel FABRICATION PROCESS: Fabricated Aluminum Pan Construction EDGES: Square / Smooth SURFACE PROCESS: Custom Dryvit® "Stucco" Finish to match Cast Concrete Icon Panels / Streetscape Plan, or chosen by Client FASTENER: Mechanically Fastened to Structural Frame Cross-Bracing		
Contd. next page...					

EXHIBIT 7



1 Perspective Modeling - (Day)
SCALE: NTS



2 Perspective Modeling - (Night)
SCALE: NTS

SPECIFICATIONS		SIGN TYPE: Largest Gateway	
Specifications Contd. ...			
9. ROOF CAP MATERIAL: Concrete, color to match streetscape plan, or chosen by client. FABRICATION PROCESS: Pre-Cast Formed, 4" Thk. (+/-) w/ 1" x 1" 45° bevel edge at bottom perimeter, Color to match cast in place footer w/ Sandblast Finish. FASTENER: Mechanically Fastened to Upper Sign Body		14. MASONRY BASE - BRICK (QTY.2) MATERIAL: Partition cinderblock core and brick facade to match streetscape plan, or chosen by client. BRICK STYLE: Modular or Standard brick BRICK PATTERN: Running brick bond pattern FABRICATION PROCESS: Brick with grouting, technique to match streetscape plan, or chosen by client. FASTENER: Mortar to CMU block utilizing metal straps. Grout seams.	
10. ACCENT BAND MATERIAL: 2" x 4" aluminum tube FABRICATION PROCESS: Custom fabricated, mitre-cut + welded EDGES: Smooth SURFACE PROCESS: Paint all exposed surfaces with Matthews Acrylic Polyurethane, with clear coat satin finish. COLOR: P4 FASTENER: Mechanically Fastened to Roof Cap		15. INLAY PANELS (QTY.4) MATERIAL: Cast Concrete Panel 4" Thk. (+/-) Concrete, color to match streetscape plan, or chosen by client. EDGES: Square IMAGE PROCESS: Custom "Embossed" Icon Per Client Artwork, Final Process Pending Material Sample + Approval by Client MOUNTING: Adhesive / Mortar Set to CMU Block	
11. CUPOLA FABRICATION PROCESS: Fabricated Aluminum Construction, Welded + Break Form Sheet EDGES: Square / Smooth SURFACE PROCESS: Paint all exposed surfaces with Matthews Acrylic Polyurethane, with clear coat satin finish. COLOR: T.B.D FASTENER: Mechanically Fastened to Roof Cap		16. MASONRY BASE - BOTTOM (QTY.2) MATERIAL: Concrete, color to match streetscape plan, or chosen by client. FABRICATION PROCESS: Poured Concrete Footer, Cast in place formed 12" Above Grade w/ Sandblast Finish. Size/Depth below grade T.B.D. by Structural Engineer GROUT: To match utilized in Brick Base.	
12. FINIAL FABRICATION PROCESS: Custom Fabricated Aluminum, Based on Existing Finial Design COLOR: P7 FASTENER: Mechanically Fastened to Cupola		17. GROUND LIGHTING - TYP. PRODUCT: LED Accent Light, 8.5W - Ext. Grade 35° Floodlight, 3000k (+/-) Color Temperature Kichler Model #15742BKT (or approved equal) SURFACE FINISH: Textured Black LENS: Frosted White (Diffusing) MOUNTING: In-Ground Stake Ref: "Spec Sheet 15742.pdf"	
13. MASONRY BASE - CAP (QTY.2) MATERIAL: Concrete, color to match streetscape plan, or chosen by client. FABRICATION PROCESS: Pre-Cast Formed, 4" Thk. (+/-) w/ 1" x 1" 45° bevel edge at top perimeter, Color to match cast in place footer w/ Sandblast Finish. GROUT: To match utilized in Brick Base.		18. GROUND TREATMENT Low lying plantings, 12" -18" max. height by Clients GC	
NOTES 1. Fabricator to verify the mounting conditions and provide a detail drawing for each mounting situation, prior to fabrication. Fabricator must obtain approval from the Designer or Client for placement prior to fabrication. 2. Welds: All welds shall be ground smooth, paint all seams. 3. Hardware: All exposed hardware shall be tamper proof fasteners. 4. All exposed edges painted to match adjacent face.			
ENVIRONMENTS & EXPERIENCES		CLIENT / PROJECT	
merJe		DENTON, TX Gateway Signage	
SUBCONSULTANT		PROJECT NO.	
DATE	8/1/16	DRAWN BY:	KRD
These drawings are meant for DESIGN INTENT ONLY and are not for construction. Contractor shall verify and be responsible for all dimensions and conditions of the job. Contractor shall be familiar with the site and conditions it presents. This office must be notified of any variations from the dimensions and conditions shown on this drawing. Shop drawings and details must be submitted to this office for approval prior to proceeding with fabrication. All copy shall be proofread by client and legal requirements checked by legal department.		REVISIONS	10/14/16
		SHEET TITLE	
		Largest Gateway	
		SHEET NO.	
		D.2	

EXHIBIT 7



1 Perspective Modeling - (Day)
SCALE: NTS



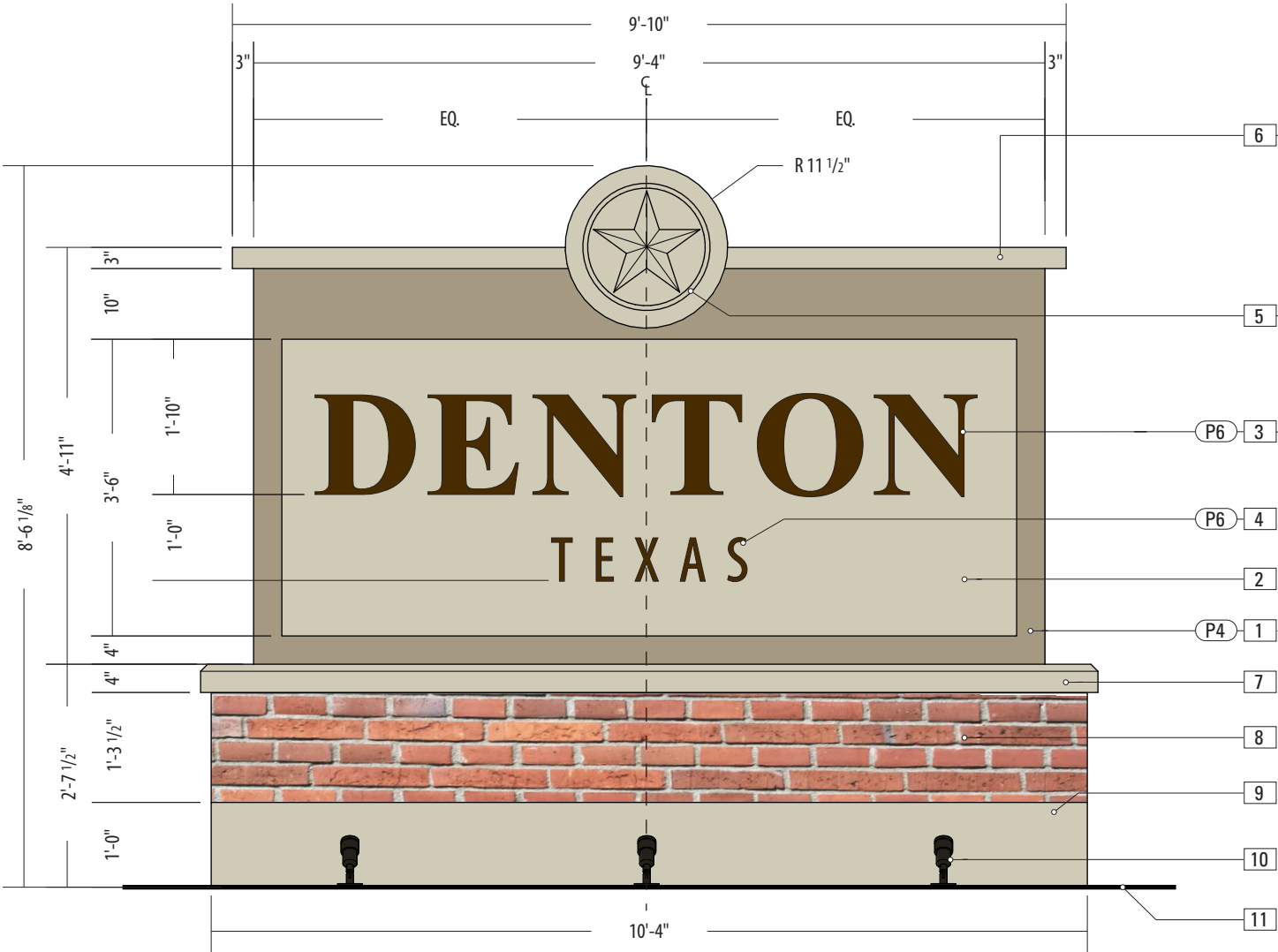
2 Perspective Modeling - (Night)
SCALE: NTS

SPECIFICATIONS		SIGN TYPE: Totem Gateway	
Specifications Contd. ...			
<div>9. ROOF CAP</div> <div>FABRICATION PROCESS: Fabricated Aluminum Construction, Welded + Break Form Sheet</div> <div>EDGES: Square / Smooth</div> <div>SURFACE PROCESS: Paint all exposed surfaces with Matthews Acrylic Polyurethane, with clear coat satin finish.</div> <div>COLOR: P4</div> <div>FASTENER: Mechanically Fastened to Structural Frame Cross-Bracing</div>			
<div>10. ACCENT BAND</div> <div>MATERIAL: 2" x 3" aluminum tube</div> <div>FABRICATION PROCESS: Custom fabricated, mitre-cut + welded</div> <div>EDGES: Smooth</div> <div>SURFACE PROCESS: Paint all exposed surfaces with Matthews Acrylic Polyurethane, with clear coat satin finish.</div> <div>COLOR: P4</div> <div>FASTENER: Mechanically Fastened to Roof Cap</div>			
<div>11. MASONRY BASE - CAP</div> <div>MATERIAL: Concrete, color to match streetscape plan, or chosen by client.</div> <div>FABRICATION PROCESS: Pre-Cast Formed, 4" Thk. (+/-) w/ 1" x 1" 45° bevel edge at top perimeter, Color to match cast in place footer w/ Sandblast Finish.</div> <div>GROUT: To match utilized in Brick Base.</div>			
<div>12. MASONRY BASE - BRICK</div> <div>MATERIAL: Partition cinderblock core and brick facade to match streetscape plan, or chosen by client.</div> <div>BRICK STYLE: Modular or Standard brick</div> <div>BRICK PATTERN: Running brick bond pattern</div> <div>FABRICATION PROCESS: Brick with grouting, technique to match streetscape plan, or chosen by client.</div> <div>FASTENER: Mortar to CMU block utilizing metal straps. Grout seams.</div>			
<div>13. INLAY PANEL</div> <div>MATERIAL: Cast Concrete Panel 4" Thk. (+/-) Concrete, color to match streetscape plan, or chosen by client.</div> <div>EDGES: Square</div> <div>IMAGE PROCESS: Custom "Embossed" Icon Per Client Artwork, Final Process Pending Material Sample + Approval by Client</div> <div>MOUNTING: Adhesive / Mortar Set to CMU Block</div>			
<div>14. MASONRY BASE - BOTTOM</div> <div>MATERIAL: Concrete, color to match streetscape plan, or chosen by client.</div> <div>FABRICATION PROCESS: Poured Concrete Footer, Cast in place formed 12" Above Grade w/ Sandblast Finish. Size/Depth below grade T.B.D. by Structural Engineer</div> <div>GROUT: To match utilized in Brick Base.</div>			
<div>15. GROUND LIGHTING</div> <div>PRODUCT: LED Accent Light, 8.5W - Ext. Grade 35" Floodlight, 3000k (+/-) Color Temperature Kichler Model #15742BKT (or approved equal)</div> <div>SURFACE FINISH: Textured Black</div> <div>LENS: Frosted White (Diffusing)</div> <div>MOUNTING: In-Ground Stake</div> <div>Ref: "Spec Sheet 15742.pdf"</div>			
<div>16. GROUND TREATMENT</div> <div>Low lying plantings, 12" -18" max. height by Clients GC</div>			

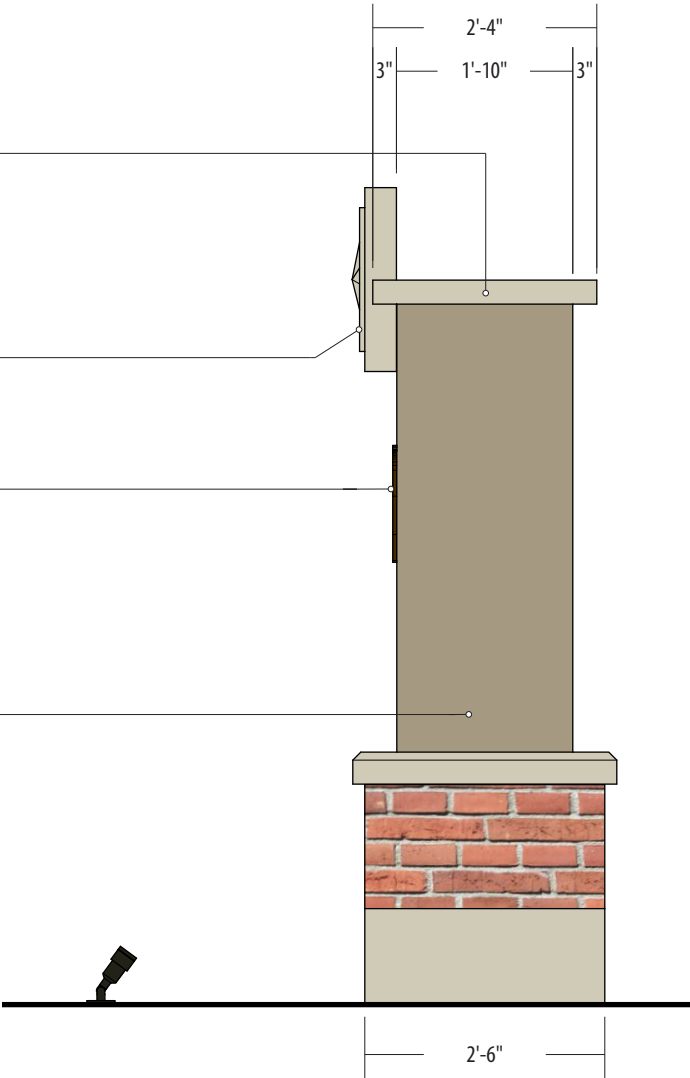
NOTES			
1. Fabricator to verify the mounting conditions and provide a detail drawing for each mounting situation, prior to fabrication. Fabricator must obtain approval from the Designer or Client for placement prior to fabrication.			
2. Welds: All welds shall be ground smooth, paint all seams.			
3. Hardware: All exposed hardware shall be tamper proof fasteners.			
4. All exposed edges painted to match adjacent face.			

ENVIRONMENTS & EXPERIENCES		CLIENT / PROJECT	
merJe		DENTON, TX Gateway Signage	
120 North Church Street Suite 208 West Chester, PA 19380 T 484.266.0648 www.merjedesign.com		PROJECT NO.	
SUBCONSULTANT		SHEET TITLE	
DATE	8/1/16	DRAWN BY:	KRD
These drawings are meant for DESIGN INTENT ONLY and are not for construction. Contractor shall verify and be responsible for all dimensions and conditions of the job. Contractor shall be familiar with the site and conditions it presents. This office must be notified of any variations from the dimensions and conditions shown on this drawing. Shop drawings and details must be submitted to this office for approval prior to proceeding with fabrication. All copy shall be proofread by client and legal requirements checked by legal department.		REVISIONS	10/14/16
		SHEET NO.	
		D.4	

EXHIBIT 7



1 Large Monument - Elevation - Front
SCALE: 1/2" = 1'- 0"



2 Elevation - Side
SCALE: 1/2" = 1'- 0"

SPECIFICATIONS SIGN TYPE: Large Monument

- 1. SIGN BODY**
FABRICATION PROCESS: Fabricated Aluminum Tube Construction, Welded w/ Alum Skin
EDGES: Square / Smooth
SURFACE PROCESS: Paint all exposed surfaces with Matthews Acrylic Polyurethane, with clear coat satin finish.
COLOR: P5
FASTENER: Mechanically Fastened Internally to Masonry Base

2. SIGN PANEL
MATERIAL: Aluminum
FABRICATION PROCESS: Fabricated Aluminum Pan Construction
EDGES: Square / Smooth
SURFACE PROCESS: Custom Dryvit® "Stucco" Finish to match Cast Concrete Icon Panels / Streetscape Plan, or chosen by Client
FASTENER: Inset + Mechanically Fastened to Sign Body

3. LETTERING - DIMENSIONAL
MATERIAL: 2" Deep Aluminum
FABRICATION PROCESS: Fabricated Letter Construction, Non-Illuminated
EDGES: Smooth
COLOR: Paint P6
SURFACE PROCESS: Paint all exposed surfaces with Matthews Acrylic Polyurethane, with clear coat satin finish.
FASTENER: Pin Mount w/ 1" spacer off 1st Surface of Sign Panel
- 4. LETTERING - DIMENSIONAL**
MATERIAL: 1" Deep Aluminum
FABRICATION PROCESS: Fabricated Letter Construction, Non-Illuminated
EDGES: Smooth
COLOR: Paint P6
SURFACE PROCESS: Paint all exposed surfaces with Matthews Acrylic Polyurethane, with clear coat satin finish.
FASTENER: Pin Mount w/ 1/2" spacer off 1st Surface of Sign Panel

5. STAR ICON PANEL
MATERIAL: Cast Concrete Panel 4" Thk. (+/-) Concrete, color to match streetscape plan, or chosen by client.
EDGES: Smooth
IMAGE PROCESS: Custom "Embossed" Icon Per Client Artwork, Final Process Pending Material Sample + Approval by Client
MOUNTING: Stud-Mounted to Sign Body

6. SIGN CAP
FABRICATION PROCESS: 3" High Fabricated Aluminum Tube Construction, Mitre-Cut + Welded w/ Alum Skin
EDGES: Square / Smooth
SURFACE PROCESS: Paint all exposed surfaces with Matthews Acrylic Polyurethane, with clear coat satin finish.
COLOR: P5
FASTENER: Concealed Mechanical Fasteners to top of Sign Body

Contd. next page...

- NOTES**
- Fabricator to verify the mounting conditions and provide a detail drawing for each mounting situation, prior to fabrication. Fabricator must obtain approval from the Designer or Client for placement prior to fabrication.
 - Welds: All welds shall be ground smooth, paint all seams.
 - Hardware: All exposed hardware shall be tamper proof fasteners.
 - All exposed edges painted to match adjacent face.

ENVIRONMENTS & EXPERIENCES		CLIENT / PROJECT	
merJe		120 North Church Street Suite 208 West Chester, PA 19380 T 484.266.0648 www.merjedesign.com	
SUBCONSULTANT		PROJECT NO.	
DATE	8/1/16	DRAWN BY:	KRD
These drawings are meant for DESIGN INTENT ONLY and are not for construction. Contractor shall verify and be responsible for all dimensions and conditions of the job. Contractor shall be familiar with the site and conditions it presents. This office must be notified of any variations from the dimensions and conditions shown on this drawing. Shop drawings and details must be submitted to this office for approval prior to proceeding with fabrication. All copy shall be proofread by client and legal requirements checked by legal department.		REVISIONS	10/14/16
		SHEET TITLE	
		Large Monument Single-Sided	
		SHEET NO.	
		D.5	

EXHIBIT 7



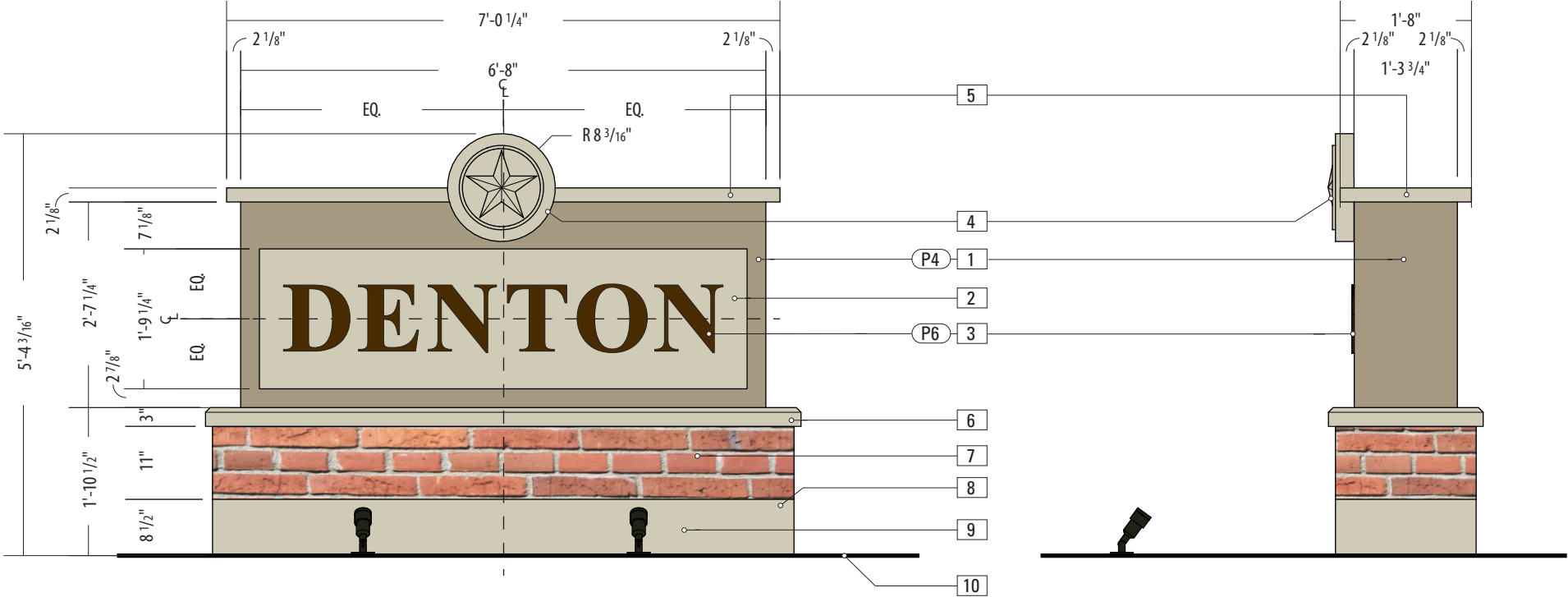
1 Perspective Modeling - (Day)
SCALE: NTS



2 Perspective Modeling - (Night)
SCALE: NTS

SPECIFICATIONS		SIGN TYPE: Large Monument	
Specifications Contd. ...		10. GROUND LIGHTING	
7. MASONRY BASE - CAP		PRODUCT: LED Accent Light, 8.5W - Ext. Grade 35° Floodlight, 3000k (+/-) Color Temperature Kichler Model #15742BKT (or approved equal)	
MATERIAL: Concrete, color to match streetscape plan, or chosen by client.		SURFACE FINISH: Textured Black	
FABRICATION PROCESS: Pre-Cast Formed, 4" Thk. (+/-) w/ 1" x 1" 45° bevel edge at top perimeter, Color to match cast in place footer w/ Sandblast Finish.		LENS: Frosted White (Diffusing)	
GROUT: To match utilized in Brick Base.		MOUNTING: In-Ground Stake	
8. MASONRY BASE - BRICK		Ref: "Spec Sheet 15742.pdf"	
MATERIAL: Partition cinderblock core and brick facade to match streetscape plan, or chosen by client.		11. GROUND TREATMENT	
BRICK STYLE: Modular or Standard brick		Low lying plantings, 12" -18" max. height by Clients GC	
BRICK PATTERN: Running brick bond pattern			
FABRICATION PROCESS: Brick with grouting, technique to match streetscape plan, or chosen by client.			
FASTENER: Mortar to CMU block utilizing metal straps. Grout seams.			
9. MASONRY BASE - BOTTOM			
MATERIAL: Concrete, color to match streetscape plan, or chosen by client.			
FABRICATION PROCESS: Poured Concrete			
Footer, Cast in place formed 12" Above Grade w/ Sandblast Finish. Size/Depth below grade T.B.D. by Structural Engineer			
GROUT: To match utilized in Brick Base.			
NOTES			
1. Fabricator to verify the mounting conditions and provide a detail drawing for each mounting situation, prior to fabrication. Fabricator must obtain approval from the Designer or Client for placement prior to fabrication.			
2. Welds: All welds shall be ground smooth, paint all seams.			
3. Hardware: All exposed hardware shall be tamper proof fasteners.			
4. All exposed edges painted to match adjacent face.			
ENVIRONMENTS & EXPERIENCES		CLIENT / PROJECT	
merJe		DENTON, TX	
120 North Church Street		Gateway Signage	
Suite 208			
West Chester, PA 19380			
T 484.266.0648			
www.merjedesign.com		PROJECT NO.	
SUBCONSULTANT		SHEET TITLE	
DATE		Large Monument	
8/1/16		Single-Sided	
DRAWN BY:		SHEET NO.	
KRD		D.6	
REVISIONS			
10/14/16			

EXHIBIT 7



1 Small Monument - Elevation - Front
SCALE: 1/2" = 1'- 0"

2 Elevation - Side
SCALE: 1/2" = 1'- 0"

SPECIFICATIONS		SIGN TYPE: Small Monument	
1. SIGN BODY FABRICATION PROCESS: Fabricated Aluminum Tube Construction, Welded w/ Alum Skin EDGES: Square / Smooth SURFACE PROCESS: Paint all exposed surfaces with Matthews Acrylic Polyurethane, with clear coat satin finish. COLOR: P5 FASTENER: Mechanically Fastened Internally to Masonry Base		4. STAR ICON PANEL MATERIAL: Cast Concrete Panel 3" Thk. (+/-) Concrete, color to match streetscape plan, or chosen by client. EDGES: Smooth IMAGE PROCESS: Custom "Embossed" Icon Per Client Artwork, Final Process Pending Material Sample + Approval by Client MOUNTING: Stud-Mounted to Sign Body	
2. SIGN PANEL MATERIAL: Aluminum FABRICATION PROCESS: Fabricated Aluminum Pan Construction EDGES: Square / Smooth SURFACE PROCESS: Custom Dryvit® "Stucco" Finish to match Cast Concrete Icon Panels / Streetscape Plan, or chosen by Client FASTENER: Inset + Mechanically Fastened to Sign Body		5. SIGN CAP FABRICATION PROCESS: 2 1/8" High Fabricated Aluminum Tube Construction, Mitre-Cut + Welded w/ Alum Skin EDGES: Square / Smooth SURFACE PROCESS: Paint all exposed surfaces with Matthews Acrylic Polyurethane, with clear coat satin finish. COLOR: P5 FASTENER: Concealed Mechanical Fasteners to top of Sign Body	
3. LETTERING - DIMENSIONAL MATERIAL: 1.5" Deep Aluminum FABRICATION PROCESS: Fabricated Letter Construction, Non-Illuminated EDGES: Smooth COLOR: Paint P6 SURFACE PROCESS: Paint all exposed surfaces with Matthews Acrylic Polyurethane, with clear coat satin finish. FASTENER: Pin Mount w/ 1/2" spacer off 1st Surface of Sign Panel		Contd. next page...	

NOTES			
1. Fabricator to verify the mounting conditions and provide a detail drawing for each mounting situation, prior to fabrication. Fabricator must obtain approval from the Designer or Client for placement prior to fabrication.			
2. Welds: All welds shall be ground smooth, paint all seams.			
3. Hardware: All exposed hardware shall be tamper proof fasteners.			
4. All exposed edges painted to match adjacent face.			

ENVIRONMENTS & EXPERIENCES		CLIENT / PROJECT	
merJe		DENTON, TX Gateway Signage	
120 North Church Street Suite 208 West Chester, PA 19380 T 484.266.0648 www.merjedesign.com		PROJECT NO.	
SUBCONSULTANT		SHEET TITLE	
DATE	8/1/16	DRAWN BY:	KRD
These drawings are meant for DESIGN INTENT ONLY and are not for construction. Contractor shall verify and be responsible for all dimensions and conditions of the job. Contractor shall be familiar with the site and conditions it presents. This office must be notified of any variations from the dimensions and conditions shown on this drawing. Shop drawings and details must be submitted to this office for approval prior to proceeding with fabrication. All copy shall be proofread by client and legal requirements checked by legal department.		REVISIONS	10/14/16
		SHEET NO.	
		D.7	

EXHIBIT 7

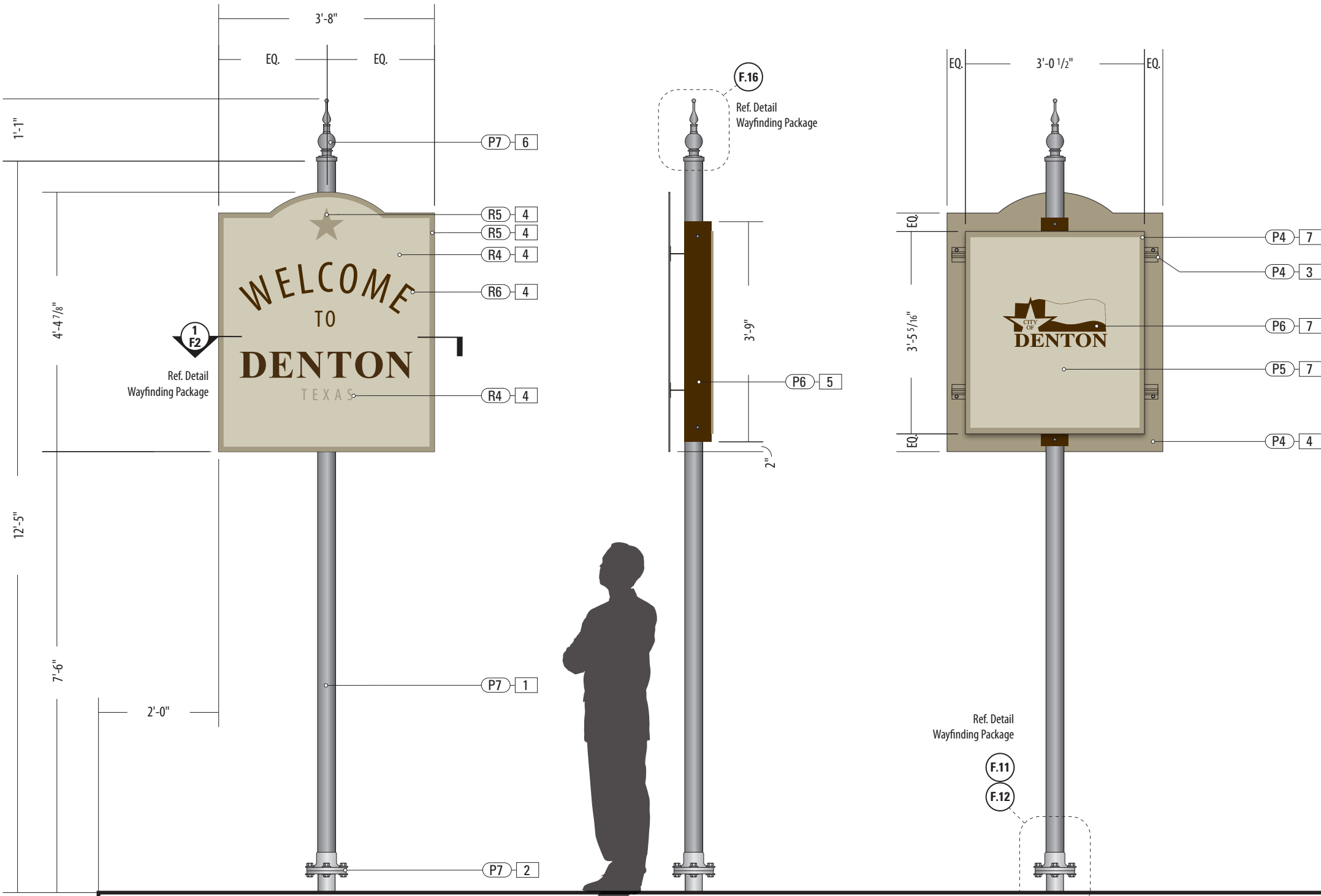


1 Downtown Totem - Elevation - Rear
SCALE: 1/2" = 1'- 0"

2 Downtown Totem - Elevation - Side
SCALE: 1/2" = 1'- 0"

SPECIFICATIONS		SIGN TYPE: Downtown Totem	
Specifications Contd. ...			
7. MASONRY BASE - BRICK			
MATERIAL: Partition cinderblock core and brick facade to match streetscape plan, or chosen by client.			
BRICK STYLE: Modular or Standard brick			
BRICK PATTERN: Running brick bond pattern			
FABRICATION PROCESS: Brick with grouting, technique to match streetscape plan, or chosen by client.			
FASTENER: Mortar to CMU block utilizing metal straps. Grout seams.			
8. INLAY PANEL			
MATERIAL: Cast Concrete Panel 4" Thk. (+/-) Concrete, color to match streetscape plan, or chosen by client.			
EDGES: Square			
IMAGE PROCESS: Custom "Embossed" Icon Per Client Artwork, Final Process Pending			
Material Sample + Approval by Client			
MOUNTING: Adhesive / Mortar Set to CMU Block			
9. MASONRY BASE - BOTTOM			
MATERIAL: Concrete, color to match streetscape plan, or chosen by client.			
FABRICATION PROCESS: Poured Concrete Footer, Cast in place formed 6" Above Grade w/ Sandblast Finish. Size/Depth below grade T.B.D. by Structural Engineer			
GROUT: To match utilized in Brick Base.			
10. GROUND TREATMENT			
Low lying plantings, 12" max. height by Clients GC			
NOTES			
1. Fabricator to verify the mounting conditions and provide a detail drawing for each mounting situation, prior to fabrication. Fabricator must obtain approval from the Designer or Client for placement prior to fabrication.			
2. Welds: All welds shall be ground smooth, paint all seams.			
3. Hardware: All exposed hardware shall be tamper proof fasteners.			
4. All exposed edges painted to match adjacent face.			
ENVIRONMENTS & EXPERIENCES		CLIENT / PROJECT	
merJe		DENTON, TX Gateway Signage	
120 North Church Street Suite 208 West Chester, PA 19380 T 484.266.0648 www.merjedesign.com		PROJECT NO.	
SUBCONSULTANT		SHEET TITLE	
DATE	8/1/16	DRAWN BY:	KRD
These drawings are meant for DESIGN INTENT ONLY and are not for construction. Contractor shall verify and be responsible for all dimensions and conditions of the job. Contractor shall be familiar with the site and conditions it presents. This office must be notified of any variations from the dimensions and conditions shown on this drawing. Shop drawings and details must be submitted to this office for approval prior to proceeding with fabrication. All copy shall be proofread by client and legal requirements checked by legal department.		REVISIONS	10/14/16
		SHEET NO.	
		D.10	

EXHIBIT 7



1 Front View: Post & Panel
SCALE: 1/2" = 1'-0"

2 Side View
SCALE: 1/2" = 1'-0"

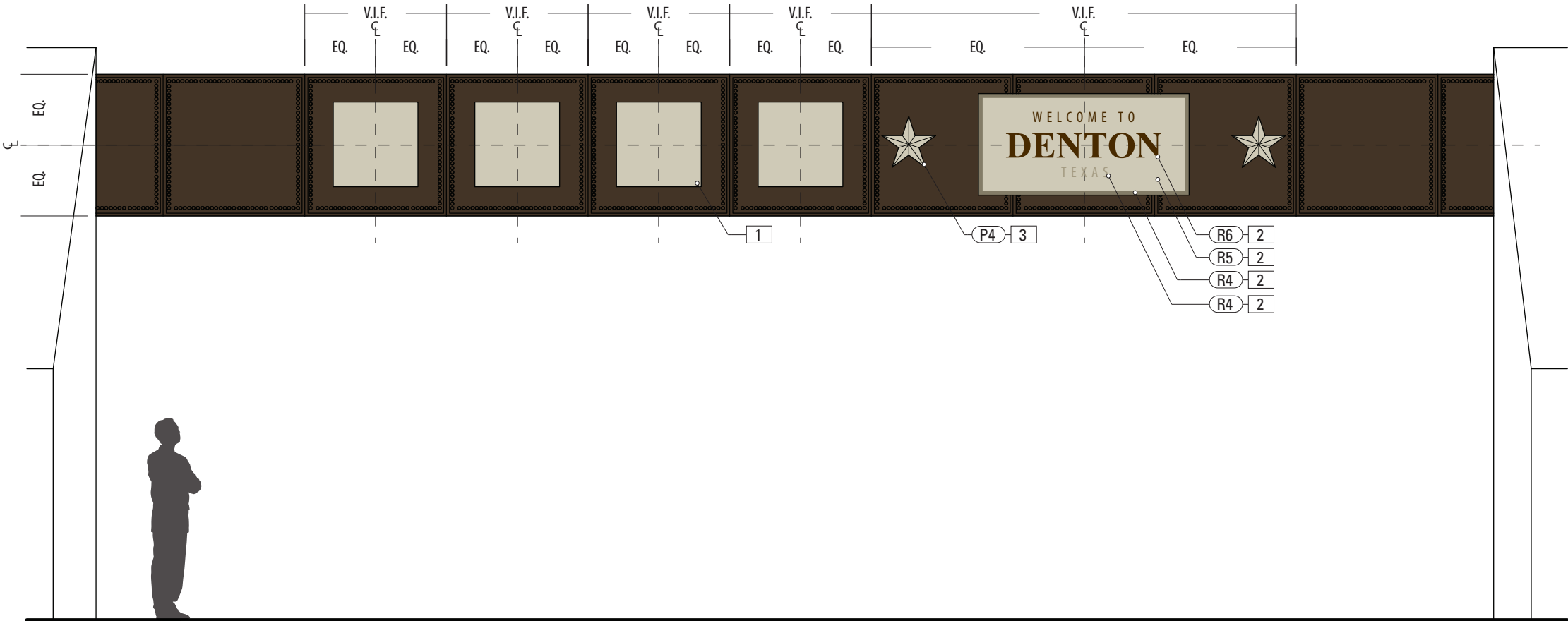
3 Back View
SCALE: 1/2" = 1'-0"

SPECIFICATIONS		SIGN TYPE: Post & Panel	
<p>1. 2.5" DIAMETER POLE - TXDOT MATERIAL: Aluminum SCH 80 Pipe 6061T6 - 2.5 (2.875" OD x .276" wall) FABRICATION PROCESS: Extruded EDGES: Smooth COLOR: Custom, as noted SURFACE PROCESS: Paint all exposed surfaces with Matthews Acrylic Polyurethane, with clear coat satin finish. FOOTER: As per TXDOT breakaway specs.</p>		<p>6. CUSTOM FINIAL - 2.5" POLE MATERIAL: Cast Aluminum EDGES: Round, Smooth COLOR: custom, as noted SURFACE PROCESS: Paint all exposed surfaces with Matthews Acrylic Polyurethane, with clear coat satin finish. FASTENER: Tamper-resistant mechanically fastened to pole.</p>	
<p>2. TXDOT UNIVERSAL TRIANGULAR SLIPBASE SYSTEM As per TXDOT breakaway specs.</p>		<p>7. SIGN PANEL BACK - PAINT COLOR: custom, as noted SURFACE PROCESS: Paint all exposed surfaces with Matthews Acrylic Polyurethane, with clear coat satin finish. FASTENER: Thru-hole w/ s.s mechanical fasteners and s.s. hex head cap nut</p>	
<p>3. SIGN MOUNT DETAILS - TXDOT WING CHANNEL: Extruded Aluminum Windbeam SPECIFIC SIGN CLAMP: Cast Aluminum SURFACE PROCESS: Paint all exposed surfaces with Matthews Acrylic Polyurethane, with clear coat satin finish. FASTENER: Utilize TXDOT recommended hardware, but the bolt and nut must be tamper-proof.</p>			
<p>4. SIGN PANEL FRONT - REFLECTIVE MATERIAL: 1/8" thk Aluminum sheet FABRICATION PROCESS: Custom router cut shape EDGES: Smooth COLOR: custom, as noted GRAPHIC BACKGROUND AND COPY PROCESS: 3M custom inks print direct to 3930 with 3M approved UV/Graffiti Vinyl Over-laminate. (See Color Sheet for all color and material specifications) FASTENER: Press-roll per 3M requirements.</p>			
<p>5. DECORATIVE SLEEVE MATERIAL: 5" x 5" x 1/4" Aluminum tube FABRICATION PROCESS: Extruded, ripped lengthwise to create 4" deep Outer Mounting Sleeve EDGES: Square, Smooth COLOR: custom, as noted SURFACE PROCESS: Paint all exposed surfaces with Matthews Acrylic Polyurethane, with clear coat satin finish. FASTENER: Tamper-resistant mechanically fastened to Specific Sign Clamp.</p>			
NOTES <p>1. Fabricator to verify the mounting conditions and provide a detail drawing for each mounting situation, prior to fabrication. Fabricator must obtain approval from the Designer or Client for placement prior to fabrication.</p> <p>2. Welds: All welds shall be ground smooth, paint all seams.</p> <p>3. Hardware: All exposed hardware shall be tamper proof fasteners.</p> <p>4. All exposed edges painted to match adjacent face.</p>			
<div>ENVIRONMENTS & EXPERIENCES</div> <div>merJe</div> <div>120 North Church Street Suite 208 West Chester, PA 19380 T 484.266.0648 www.merjedesign.com</div>		<div>CLIENT / PROJECT</div> <div>DENTON, TX Gateway Signage</div>	
SUBCONSULTANT		PROJECT NO.	
DATE 8/1/16	DRAWN BY: KRD	<div>Post & Panel Single-Sided</div>	
REVISIONS 10/14/16			
These drawings are meant for DESIGN INTENT ONLY and are not for construction. Contractor shall verify and be responsible for all dimensions and conditions of the job. Contractor shall be familiar with the site and conditions it presents. This office must be notified of any variations from the dimensions and conditions shown on this drawing. Shop drawings and details must be submitted to this office for approval prior to proceeding with fabrication. All copy shall be proofread by client and legal requirements checked by legal department.		SHEET NO.	
		D.11	

EXHIBIT 7



2 Perspective Modeling
SCALE: NTS



1 Railroad Overhead Bridge - Elevation
SCALE: 1/4" = 1'- 0"

SPECIFICATIONS SIGN TYPE: Railroad Overhead Bridge

1. **ICON PANELS**
MATERIAL: Cast Concrete Panel 3" Thk. (+/-)
Concrete, color to match streetscape plan, or chosen by client.
EDGES: Square
IMAGE PROCESS: Custom "Embossed" Icon
Per Client Artwork, Final Process Pending
Material Sample + Approval by Client
MOUNTING: Sub-Frame w/ Mechanical Fastener to Railroad Overhead Bridge
2. **SIGN PANEL - REFLECTIVE**
MATERIAL: 3"D Formed Aluminum Pan
EDGES: Smooth
COLOR: custom, as noted
GRAPHIC BACKGROUND AND COPY PROCESS: 3M custom inks print direct to 3930 with 3M approved UV/Graffiti Vinyl Over-laminate. (See Color Sheet for all color and material specifications)
FASTENER: Press-roll per 3M requirements.
MOUNTING: Sub-Frame w/ Mechanical Fastener to Railroad Overhead Bridge
3. **STARS - DIMENSIONAL**
MATERIAL: 3" Deep Aluminum
FABRICATION PROCESS: Fabricated Letter Construction, Non-Illuminated
EDGES: Smooth
COLOR: Paint P4
SURFACE PROCESS: Paint all exposed surfaces with Matthews Acrylic Polyurethane, with clear coat satin finish.
FASTENER: Pin Mount w/ 1" spacer off Railroad Overhead Bridge

- NOTES**
1. Fabricator to verify the mounting conditions and provide a detail drawing for each mounting situation, prior to fabrication. Fabricator must obtain approval from the Designer or Client for placement prior to fabrication.
2. Welds: All welds shall be ground smooth, paint all seams.
3. Hardware: All exposed hardware shall be tamper proof fasteners.
4. All exposed edges painted to match adjacent face.

ENVIRONMENTS & EXPERIENCES		CLIENT / PROJECT	
<div>merJe</div> <div>120 North Church Street Suite 208 West Chester, PA 19380 T 484.266.0648 www.merjedesign.com</div>		DENTON, TX Gateway Signage	
		PROJECT NO.	
SUBCONSULTANT		SHEET TITLE	
DATE	8/1/16	DRAWN BY:	KRD
<div>These drawings are meant for DESIGN INTENT ONLY and are not for construction. Contractor shall verify and be responsible for all dimensions and conditions of the job. Contractor shall be familiar with the site and conditions it presents. This office must be notified of any variations from the dimensions and conditions shown on this drawing. Shop drawings and details must be submitted to this office for approval prior to proceeding with fabrication. All copy shall be proofread by client and legal requirements checked by legal department.</div>		REVISIONS	10/14/16
		SHEET NO.	
		D.12	