
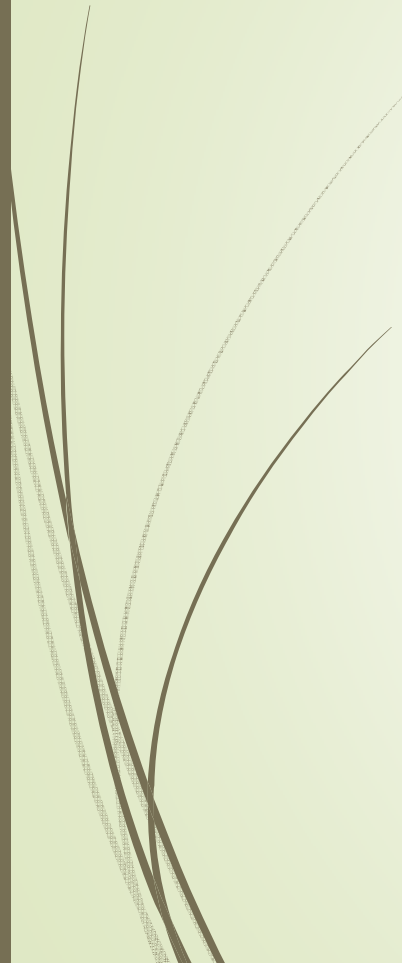




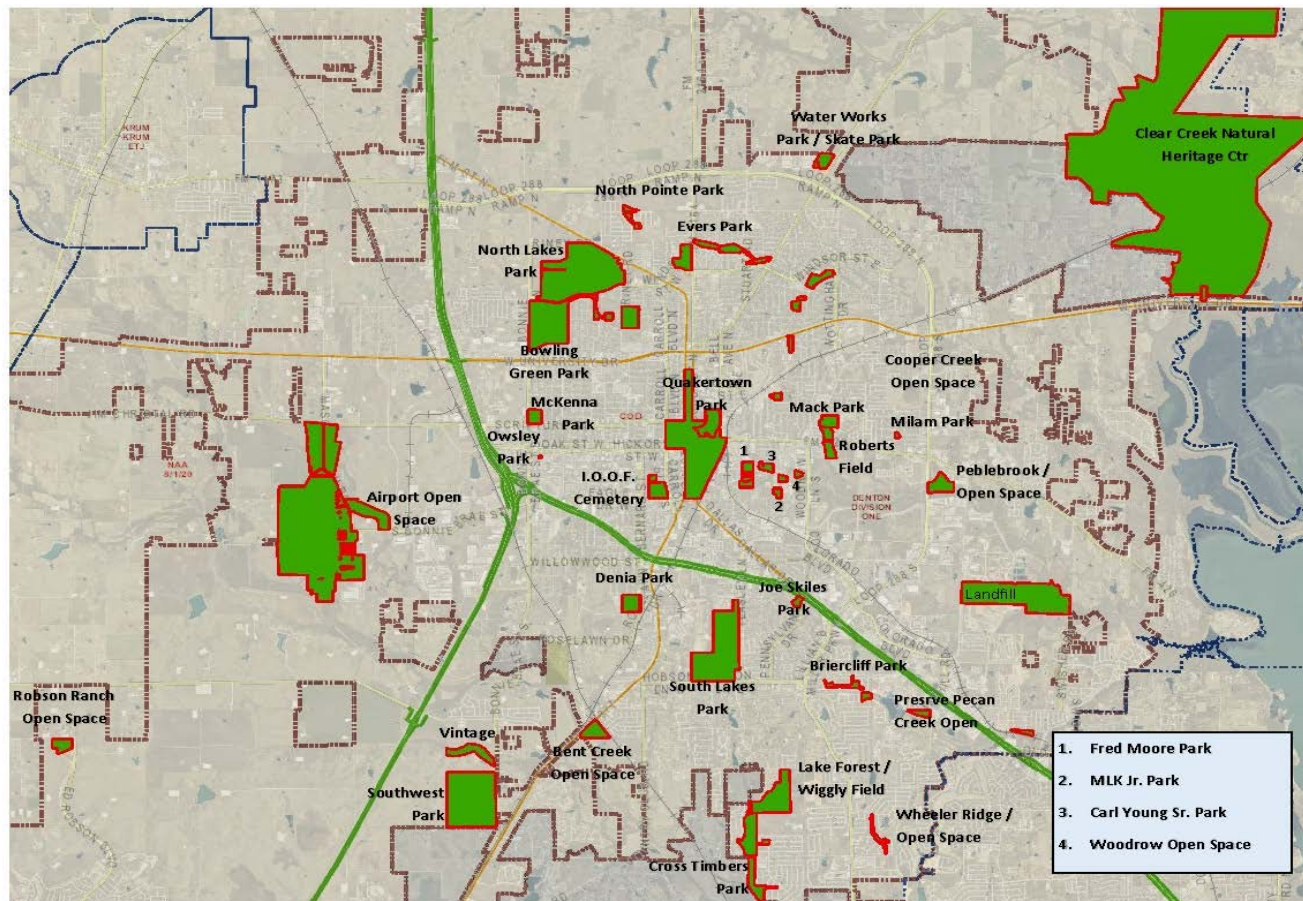
Park Maintenance and Tree Policies



Park Mowing and Reforestation Practices

- Council requested a presentation on park mowing policies and natural reforestation
 - Park Classifications - A through D
 - Park Inventory and Use
- 

Map of City of Denton with Parks



Class A Turf

- Mowed a minimum of 32 cycles annually
- Irrigated turf
- Includes Public Buildings, Fire Stations, and Sports Fields
- Responsible for 259.18 Class A Acres



Class B Turf

- Mowed a minimum of 20 cycles annually
- Non-irrigated turf
- Parks and Medians
- Responsible for 465.17 Class B acres



Class C Turf

- Mowed a minimum of once monthly
- Non-irrigated turf, parks and rights-of-Ways
- Responsible for 860.54 Class C acres



Class D Turf

- Not mowed
- Natural and undeveloped areas
- Responsible for 722.40 Class D acres

