



Denton Municipal Electric  
City of Denton  
1659 Spencer Road  
Denton, TX 76205

January 26, 2017

## Project Information

### Hartlee Field Substation

#### **Description of the Project**

Denton Municipal Electric (DME) has identified several projects that are critical to maintaining reliability and allowing Denton to continue to grow. Construction of the Hartlee Field Substation is one project that is necessary. Information on the project is presented herein.

Several alternatives have been considered as possible locations for reconstruction of the Hartlee Field Substation. A map is attached that shows location options that have been identified at this time. One of those possible sites is owned by the city. A substation location could be chosen that is different from those locations shown on the map. All facilities will be owned and operated by DME.

#### **Why is the project needed?**

State and federal laws mandate specific and well defined performance requirements for utility systems. DME must comply with these requirements not only to ensure regulatory compliance, but more importantly, to maintain the best reliability of electric service to our customers.



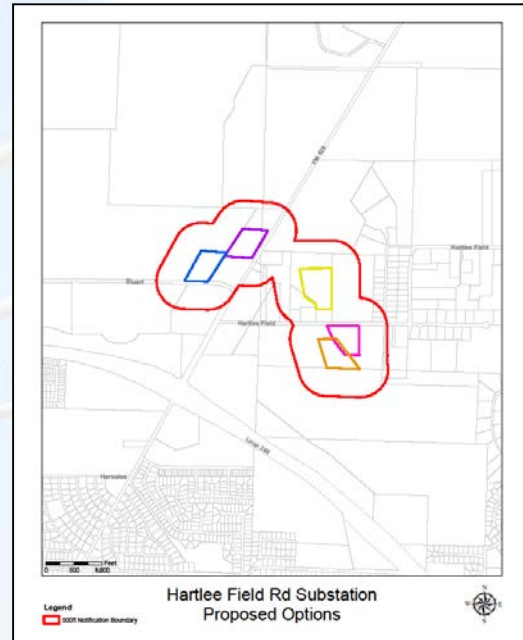
Annual studies are completed to determine whether or not each transmission line segment and substation section provide the performance required by the rules. If deficiencies are identified, projects must be defined and constructed that resolve the deficits. In determining a solution for a deficiency, alternatives are considered that take into account benefits, impacts, and costs.

In the case of Hartlee Field Substation, it has been determined with the growth in North Texas, the capacity of adjacent substations will not be sufficient to accommodate growth in northeast Denton at some point in the future. It is the intention of the City of Denton to purchase the land and build the substation in a future year as the City expands to the north and northeast. This site provides DME with great flexibility both in maintaining City-wide system reliability and in meeting the growing electrical demands of the City's electrical system.

DME has investigated five alternatives for the Hartlee Field Substation. The attached map shows the five options.

### **The Site Selection Process**

The analysis phase of project development only identifies that a project is needed, what the project should accomplish, and a potential area for the needed project. It does not mandate the use of a specific site. The site selection process, which includes requesting public input, is employed to assist with determining the location for the new substation. Alternatives have been identified for the substation construction and are depicted on the attached map. Identification of these sites is the starting point for the selection process. This open house is intended to communicate the need for the project and to provide an opportunity for individuals to learn about the project and make comments. Potentially affected land owners and those within 500 feet of any of the alternative sites have been notified by mail of the project and the public open house.



The City Council has approved the substation site selection process. This process presents the public with several opportunities to provide input. The first step is for DME to conduct an open house where information is made available on the proposed project, questions may be asked, recommendations can be made, and written or verbal comments may be provided. Interested individuals may also contact DME at any time. Contact information for DME is provided below and at the open house. All comments received for a project will be compiled, DME will consider all comments, complete additional reviews as appropriate, and will provide a recommendation to the Public Utilities Board (PUB). During its consideration of DME's proposal, the PUB will conduct a public hearing and direct DME to take additional actions or recommend a site for consideration by the City Council. During its consideration of the PUB's findings, the City Council will again conduct a public hearing to receive comments from interested residents. Ultimately, the City Council will select the site for the proposed substation.

DME's practice is to provide notices by mail for the open house and for the PUB and City Council public hearings.

***DME's contact for questions:*** Brian Daskam  
Energy Services Development Officer  
Phone: (940) 349-7567  
Email: Brian.Daskam@cityofdenton.com

### **Timeline for the Proposed Facilities**

Following recommendation by the Public Utilities Board and approval by the City Council of a site, DME will undertake procurement of land for the proposed substation should a site other than the one already owned by the City of Denton be selected. The time required for purchase of the land is unknown at this time. Construction of the substation will be undertaken when

development or other load growth in northeast Denton increases to the point where it is needed or should other reliability considerations arise. DME has no timetable for actual construction but anticipates that the station will be needed four to ten years after the site is selected by City Council and the land is acquired.

### **Procurement of Land and Easements**

Land and easement procurement processes are governed by state laws and local ordinances such as Senate Bill 18. Once the City Council has approved the substation site, if procurement actions are required, the process will follow these requirements. The City will pay fair market prices for land and land rights. Fair market value is determined by conducting market studies and appraisals.

Attachment: Location Map

