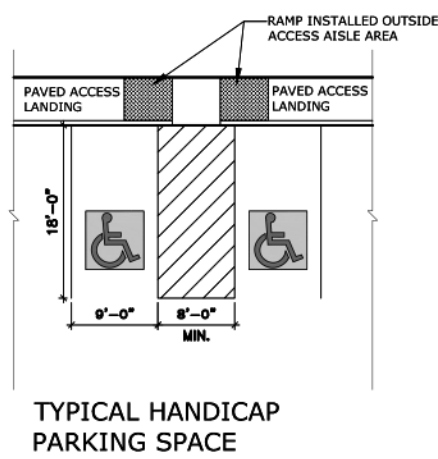
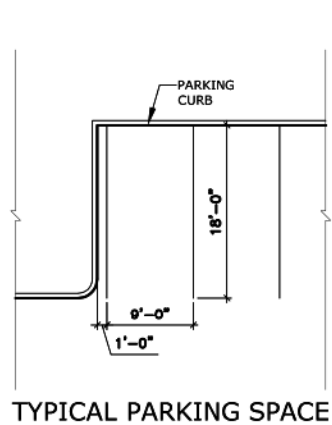
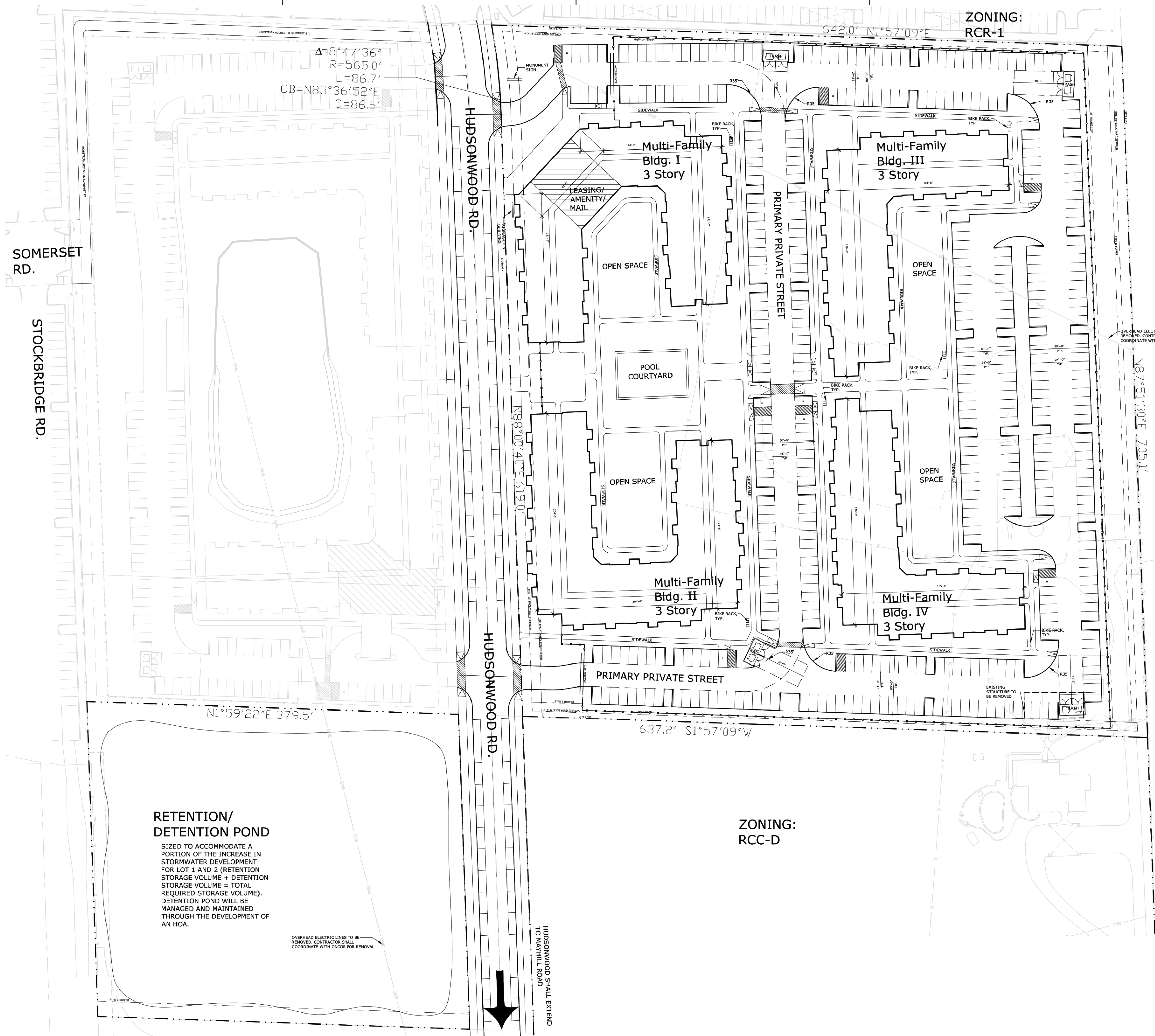
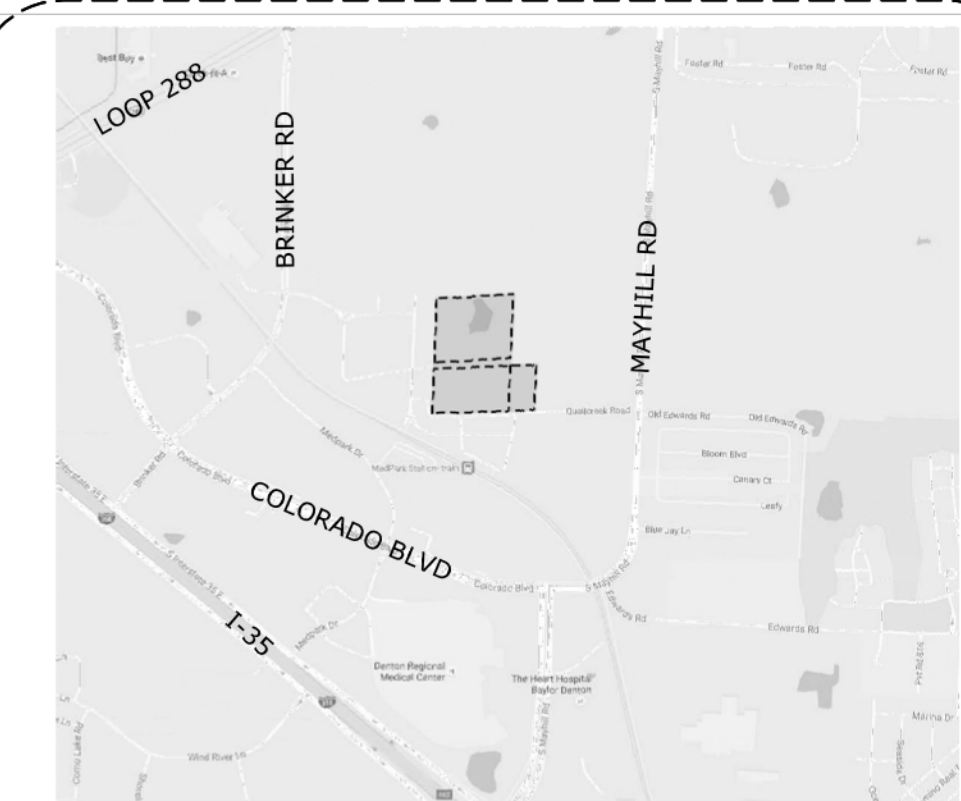


The Standard at
MedPark Station
Denton, Texas



15 TYPICAL PARKING DETAIL



20 Vicinity Map
N.T.S.

16 Site Plan
1" = 50'

Project Number: 2016045.00
Drawn By: NP
Issue For: Zoning
03.02.2017

© 2016 JHP
All Rights Reserved.
All materials embodied herein constitute an original work by the Architect; the Architect owns all copyrights herein. The viewer may not reproduce, display or distribute this work or prepare derivative works based on this work without the express written consent of the copyright owner.

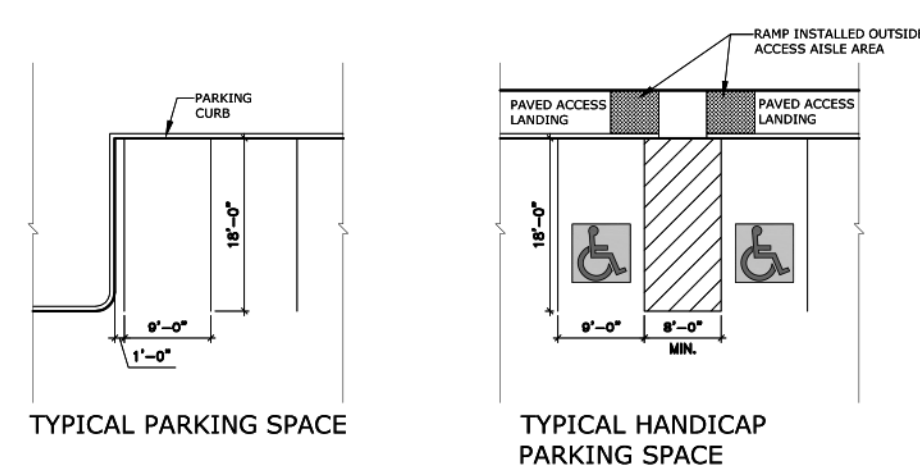
Sheet:

SUP REQUIREMENTS - SITE PLAN		
THE STANDARD AT MEDPARK STATION		
TOTAL PROJECT ACREAGE	10.29 AC	
TOTAL UNITS	263	
DENSITY (DU/AC)	25.56	
CURRENT ZONING	RCC-D	
ESTIMATED TIME OF COMPLETION	3rd Quarter - 2019	
UNIT TYPE	% OF UNITS	NO. OF UNITS
1 BEDROOM	16.35%	43
2 BEDROOM	51.33%	135
3 BEDROOM	32.32	85
TOTAL UNITS	100%	263
	GROSS FLOOR AREA	FLOOR AREA RATIO
TOTAL BUILDING AREA	311,512.55 SF	69.55%
LEASING/AMENITY/MAIL	5326 SF	-
LOT COVERAGE	PERCENT	SQUARE FEET
BUILDING FOOTPRINT	22.06%	103,838
PAVEMENT	33.40%	157,205
SIDEWALK	13.12%	61,766
POOL	0.77%	3,626
TOTAL IMPERVIOUS	69.36%	326,435
LANDSCAPE AREA	30.64%	144,208
ENVIRONMENTALLY SENSITIVE AREAS	0.00%	0
BUILDING TYPE	STORIES	HEIGHT
BUILDING I	3	34' - 0"
BUILDING II	3	34' - 0"
BUILDING III	3	34' - 0"
BUILDING IV	3	34' - 0"
TRASH ENCLOSURES	N/A	N/A
BUILDING FRONTAGE	DISTANCE	PERCENTAGE
(WITHIN 20 FEET OF FRONT PROPERTY LINE)		
FRONT PROPERTY LINE	705'-9"	100.00%
TOTAL BUILDING FRONTAGE	360'-8"	51.10%

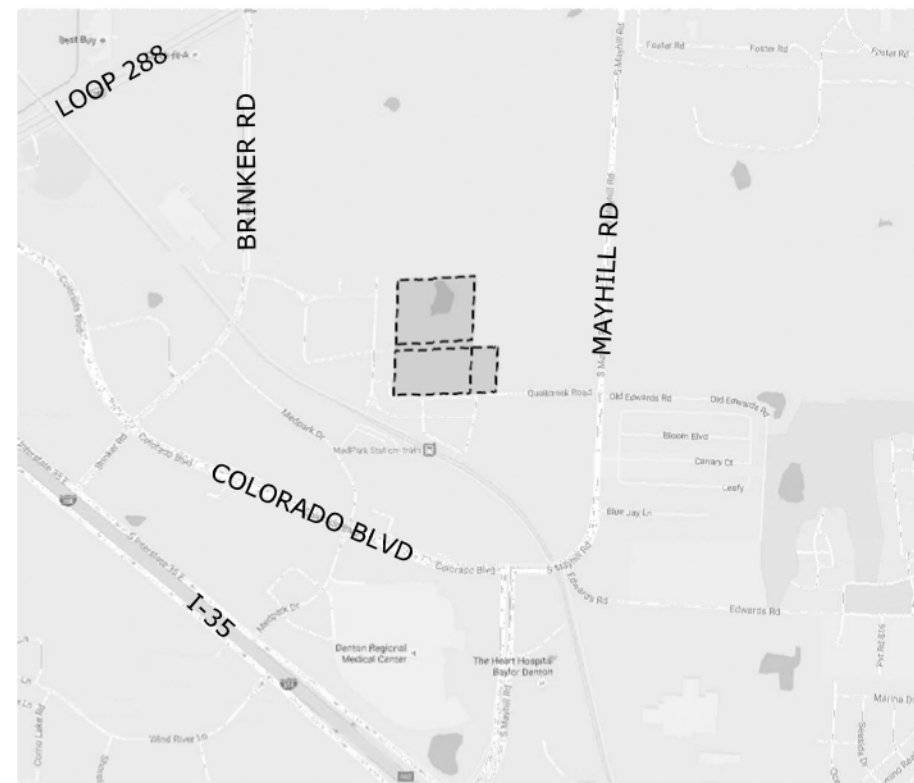
PARKING CALCULATIONS			
UNIT	NO. OF UNITS	SPACES PER UNIT	TOTAL
1 BEDROOM	43	1.5	65
2 BEDROOM	135	1.75	236
3 BEDROOM	85	2	170
TOTAL REQUIRED PARKING			471
STANDARD			422
HANDICAP			10
ON-STREET*			40
TOTAL PARKING PROVIDED			472
*IN COMPLIANCE WITH DENTON DEVELOPMENT CODE 35.14.5.A: "One off-street parking space credit for every two on-street spaces up to four credits, thereafter one space credit for each on-street parking space."			
		REQUIRED	PROVIDED
BIKE PARKING		0	30

DETENTION		
TOTAL DETENTION ACREAGE	3.03 AC	
LOT COVERAGE	PERCENT	SQUARE FEET
BUILDING FOOTPRINT	0.00%	0
PAVEMENT	4.75%	6,271
SIDEWALKS	1.86%	2,453
DETENTION/RETENTION	74.39%	98,293
TOTAL IMPERVIOUS	81.00%	107,018
LANDSCAPE AREA	19.00%	25,110
ENVIRONMENTALLY SENSITIVE AREAS	0.00%	0

The Hudson at
MedPark Station
Denton, Texas



15 TYPICAL PARKING DETAIL

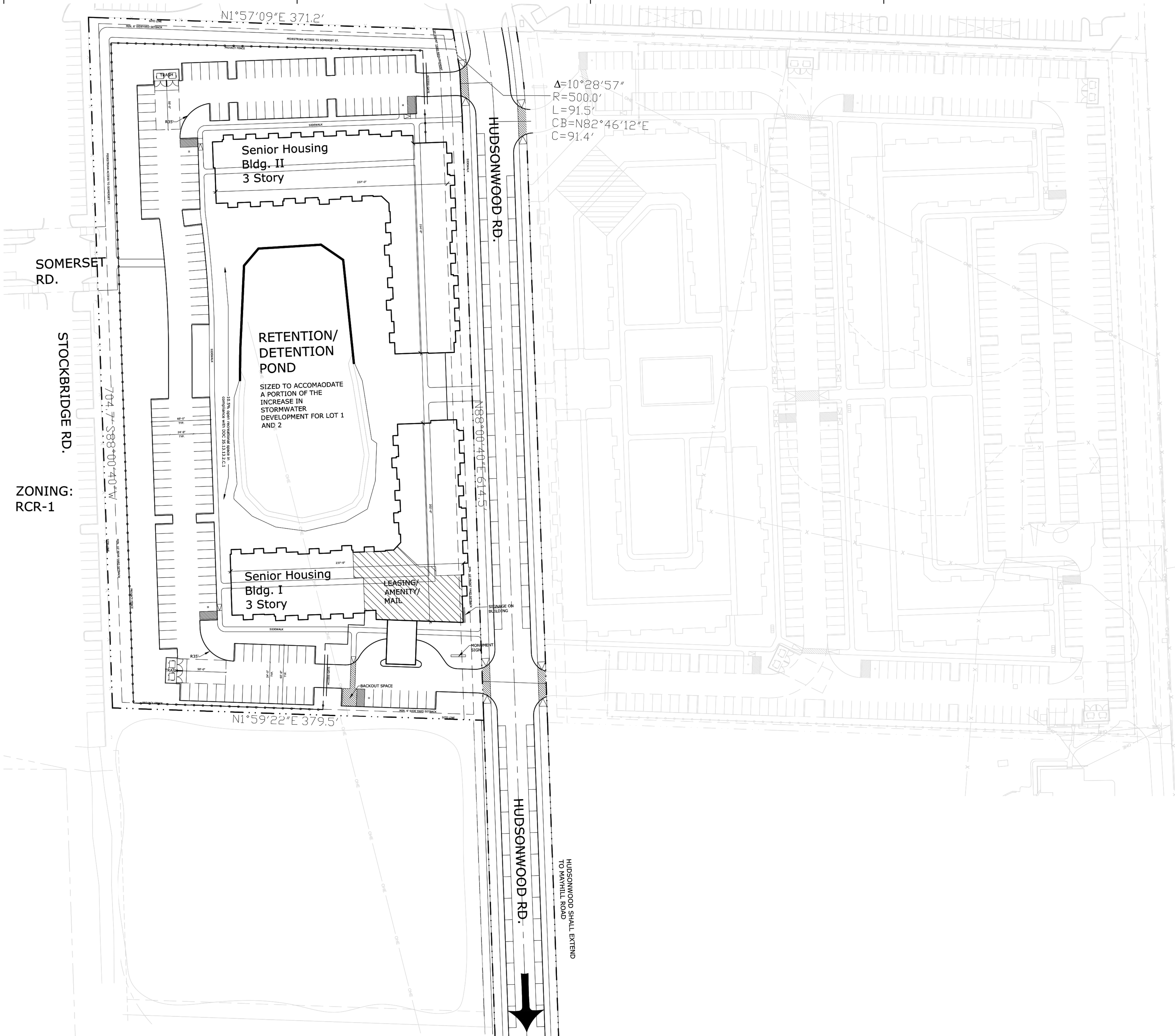


20 Vicinity Map
N.T.S.

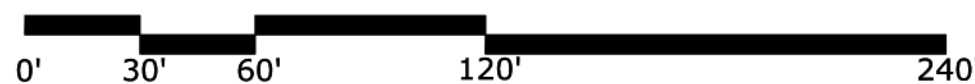
Project Number: 2016045.00
Drawn By: NP
Issue For: Zoning 03.02.2017

© 2016 JHP
All Rights Reserved.
All materials embodied herein constitute an original work by the Architect; the Architect owns all copyrights herein. The viewer may not reproduce, display or distribute this work or prepare derivative works based on this work without the express written consent of the copyright owner.

Sheet:



16 Site Plan
1' = 50'



SUP REQUIREMENTS - SITE PLAN		
THE HUDSON AT MEDPARK STATION		
TOTAL PROJECT ACREAGE	6.65 AC	
TOTAL UNITS	160	
DENSITY (DU/AC)	24.06	
CURRENT ZONING	RCC-D	
ESTIMATED TIME OF COMPLETION	3rd Quarter - 2019	
UNIT TYPE	% OF UNITS	NO. OF UNITS
1 BEDROOM	70.00%	112
2 BEDROOM	30.00%	48
TOTAL UNITS	100.00%	160
	GROSS FLOOR AREA	FLOOR AREA RATIO
TOTAL BUILDING AREA	153,027.39	57.48%
LEASING/AMENITY/MAIL	6,250.01	-
LOT COVERAGE	PERCENT	SQUARE FEET
BUILDING FOOTPRINT	17.61%	51,009
PAVEMENT	25.97%	75,201
SIDEWALKS	10.98%	31,797
RETENTION	17.31%	50,130
TOTAL IMPERVIOUS	71.87%	208,137
LANDSCAPE AREA	28.13%	81,459
ENVIRONMENTALLY SENSITIVE AREAS	0%	0
BUILDING TYPE	STORIES	HEIGHT
BUILDING I	3	34' - 0"
BUILDING II	3	34' - 0"
BUILDING FRONTAGE	DISTANCE	PERCENTAGE
(WITHIN 20 FEET OF FRONT PROPERTY LINE)		
FRONT PROPERTY LINE	705'-10"	100.00%
TOTAL BUILDING FRONTAGE	421'-6"	59.72%

PARKING CALCULATIONS			
UNIT	NO. OF UNITS	SPACES PER UNIT	TOTAL
1 BEDROOM	112	1	112
2 BEDROOM	48	1	48
TOTAL REQUIRED PARKING			160
STANDARD			156
HANDICAP			4
ON-STREET *			0
TOTAL PARKING PROVIDED			160
*IN COMPLIANCE WITH DENTON DEVELOPMENT CODE 35.14.5.A "One off-street parking space credit for every two on-street spaces up to four credits, thereafter one space credit for each on-street parking space."			
		REQUIRED	PROVIDED
BIKE PARKING		0	0

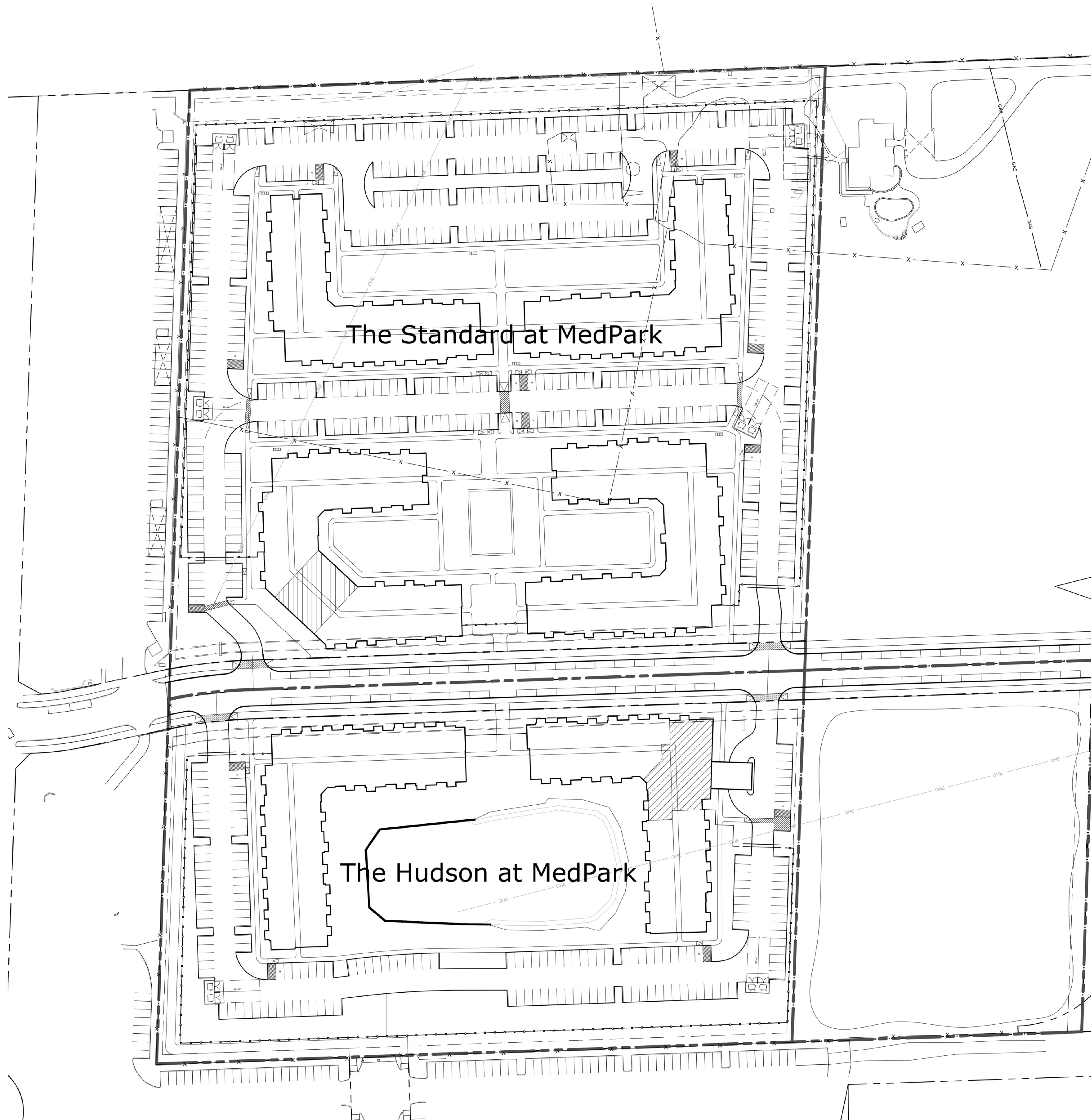
The Standard and The Hudson at MedPark Station Denton, Texas

Project Number: 2016045.00
Drawn By: NP
Issue For: Zoning
03.02.2017

© 2016 JHP
All Rights Reserved.
All materials embodied herein constitute an
original work by the Architect; the Architect
owns all copyrights herein. The viewer may
not reproduce, display or distribute this work
or prepare derivative works based on this
work without the express written consent of
the copyright owner.

Sheet:

SP-3



Remaining
Property to
Mayhill Rd.

Remaining
Property to
Mayhill Rd.

16 Site Plan
1" = 60'



Site Plan