

Z16-0018

Blue Beacon Truck Wash

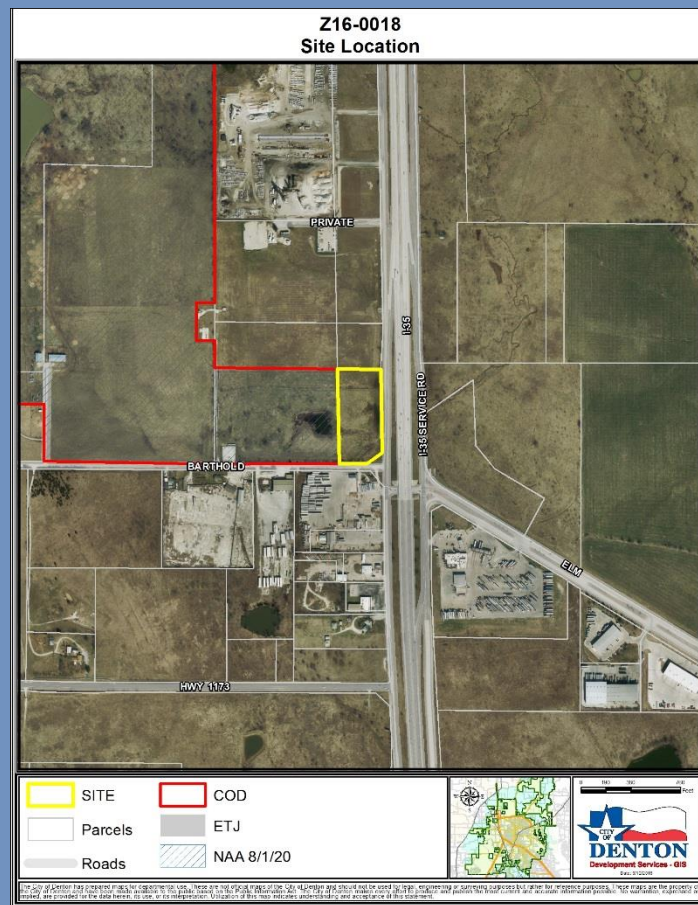
Munal Mauladad-Development Services

February 21, 2017



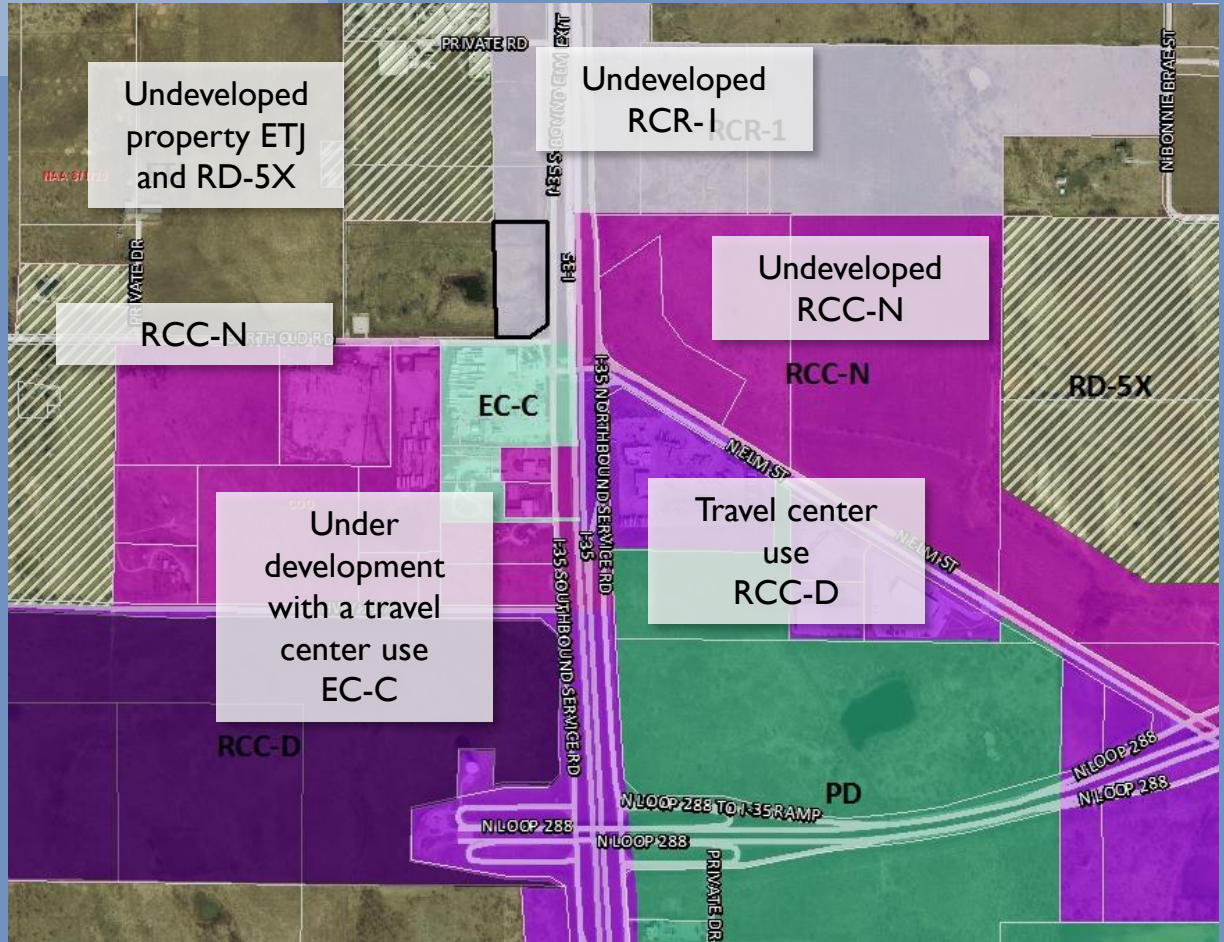
Z16-0018 Summary:

- ▶ **Location:** IH-35 SB service road north of Barthold Road
- ▶ **Request:** Rezone 7.95 acres from **RCR-1** District to **EC-C** District
- ▶ **Recommendation:** **Approval of Z16-0018**



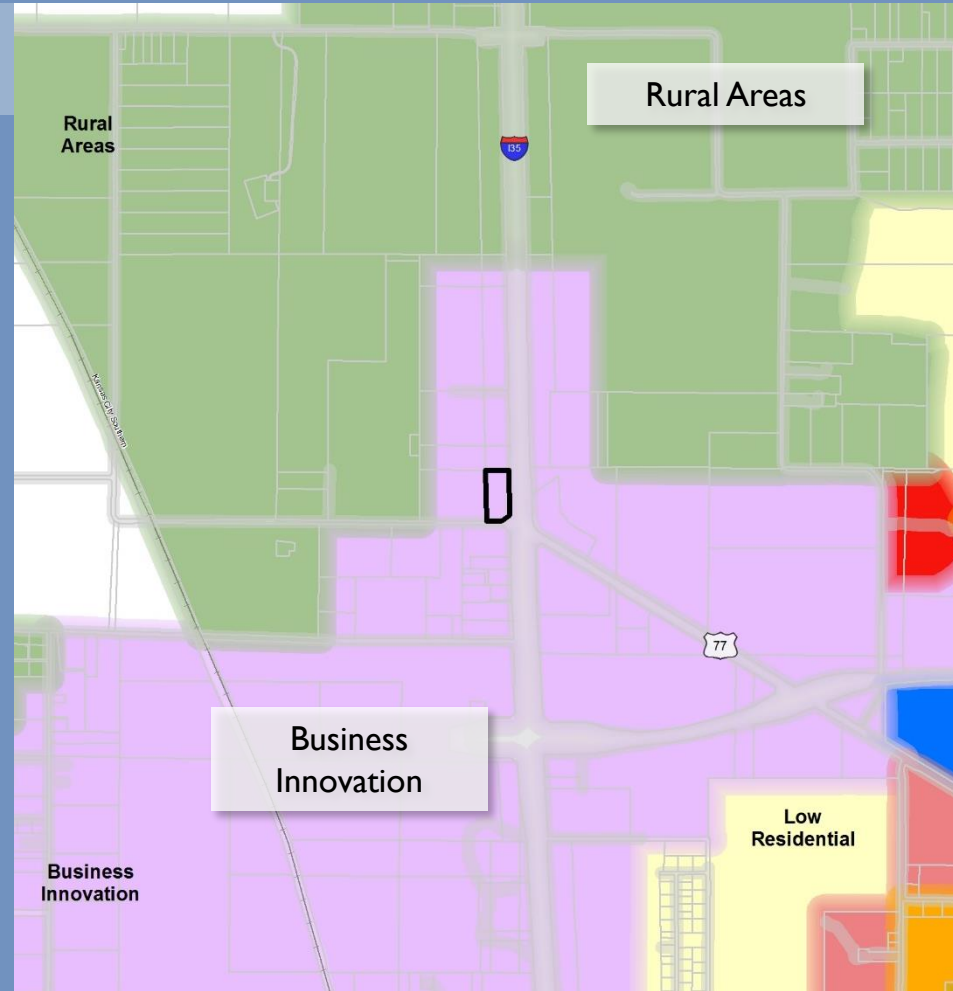
Current

- ▶ Current: RCR-1 District
- ▶ Proposed: EC-C District



Future Land Use

- ▶ **Business Innovation**
 - ▶ Primarily office, research and development, and light manufacturing as well-planned, larger scale office and employment parks
 - ▶ Supporting uses such as retail, hotels, and residential are also encouraged



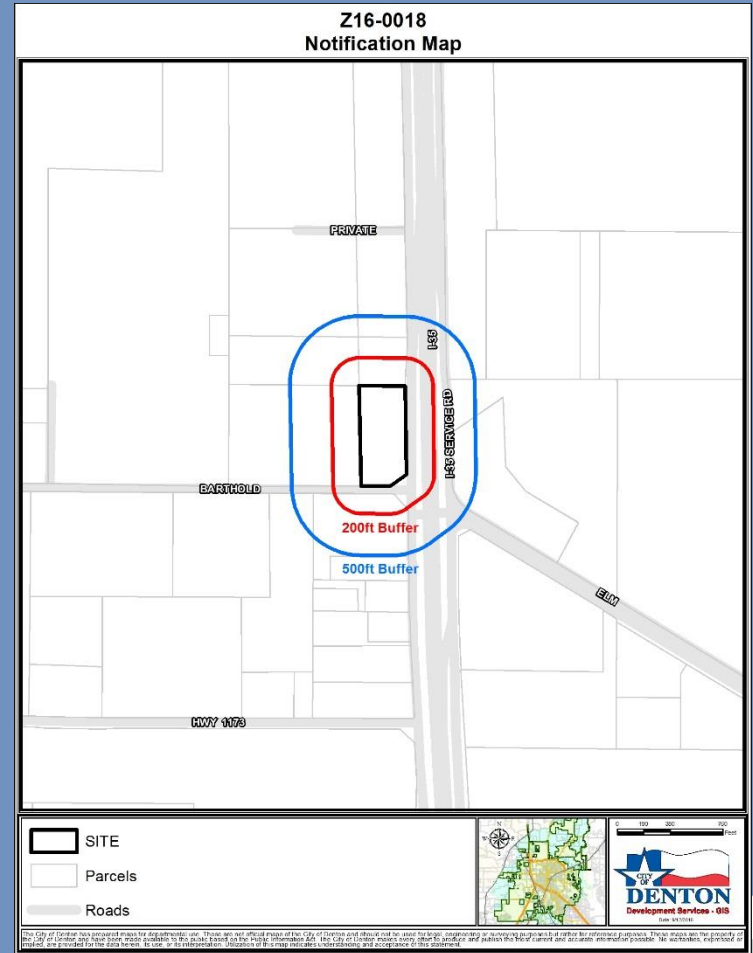
Considerations

- ▶ The proposed rezoning meets Section 35.3.4.B
 - ▶ Future Land Use designation of Business Innovation (employment centers and supporting retail, hotel, and residential uses).
 - ▶ EC-C District permits a diverse range of commercial uses while integrating employment uses such as light manufacturing and retail warehouse.
 - ▶ Adequate infrastructure
- ▶ Anticipated growth adjacent to the I-35 corridor.
 - ▶ Commercial uses, transitioning to employment development
 - ▶ EC-C permits uses consistent with the proposed growth

Considerations

- ▶ Current zoning designation permits many commercial uses, but with limitations which prevent development at a scale that is typically found along highway corridors.
- ▶ EC-C District would expand the number of permitted commercial and industrial uses and enlarge the potential building scale, thus enabling development consistent with the site's location adjacent to I-35.
- ▶ EC-C District is a logical continuation of the EC-C District to the south

Public Notification



Recommendation

- ▶ The Planning and Zoning Commission recommends **APPROVAL** of the request (7-0).
- ▶ Staff recommends **APPROVAL** based on the considerations and the criteria for approval

