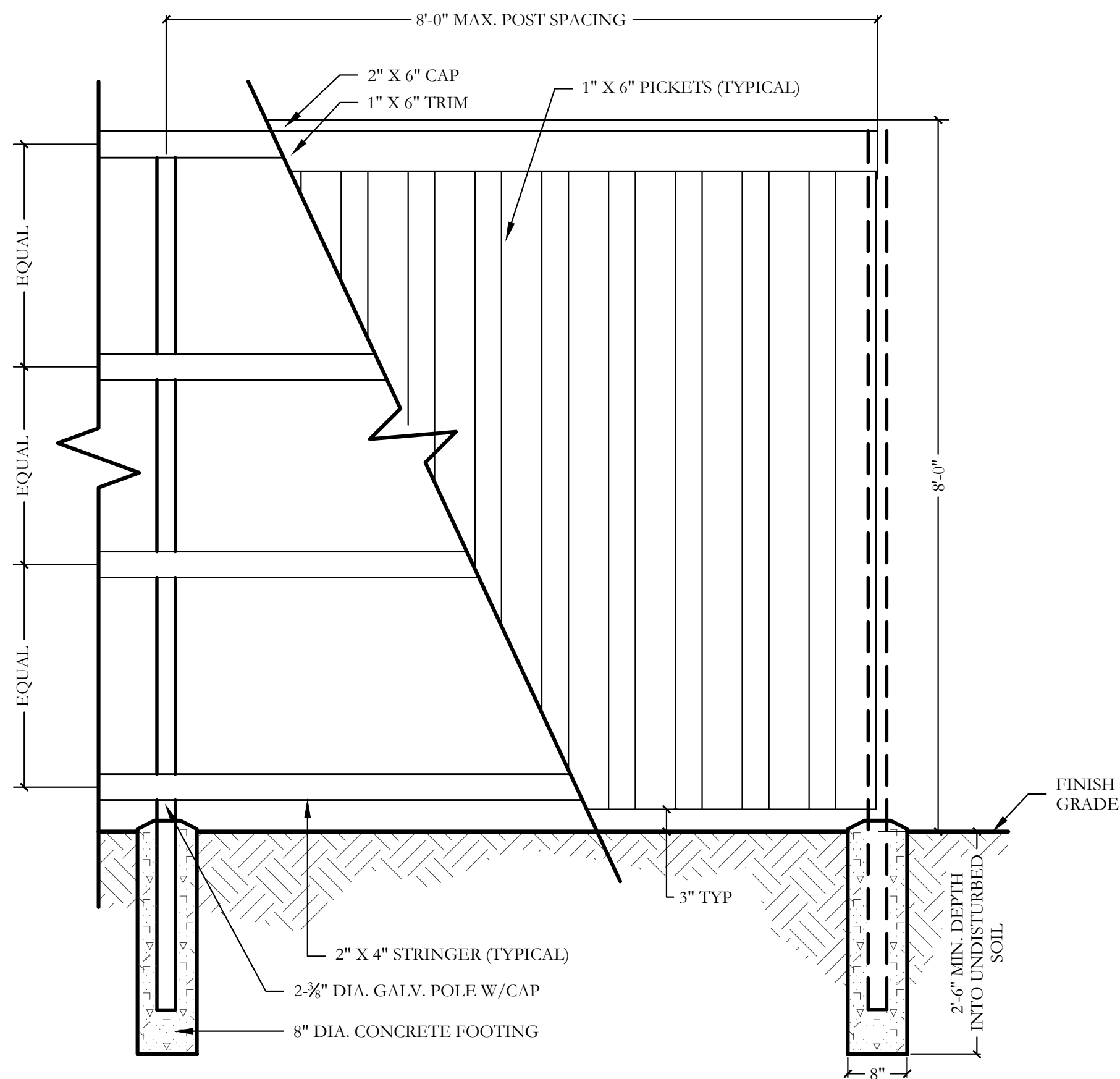
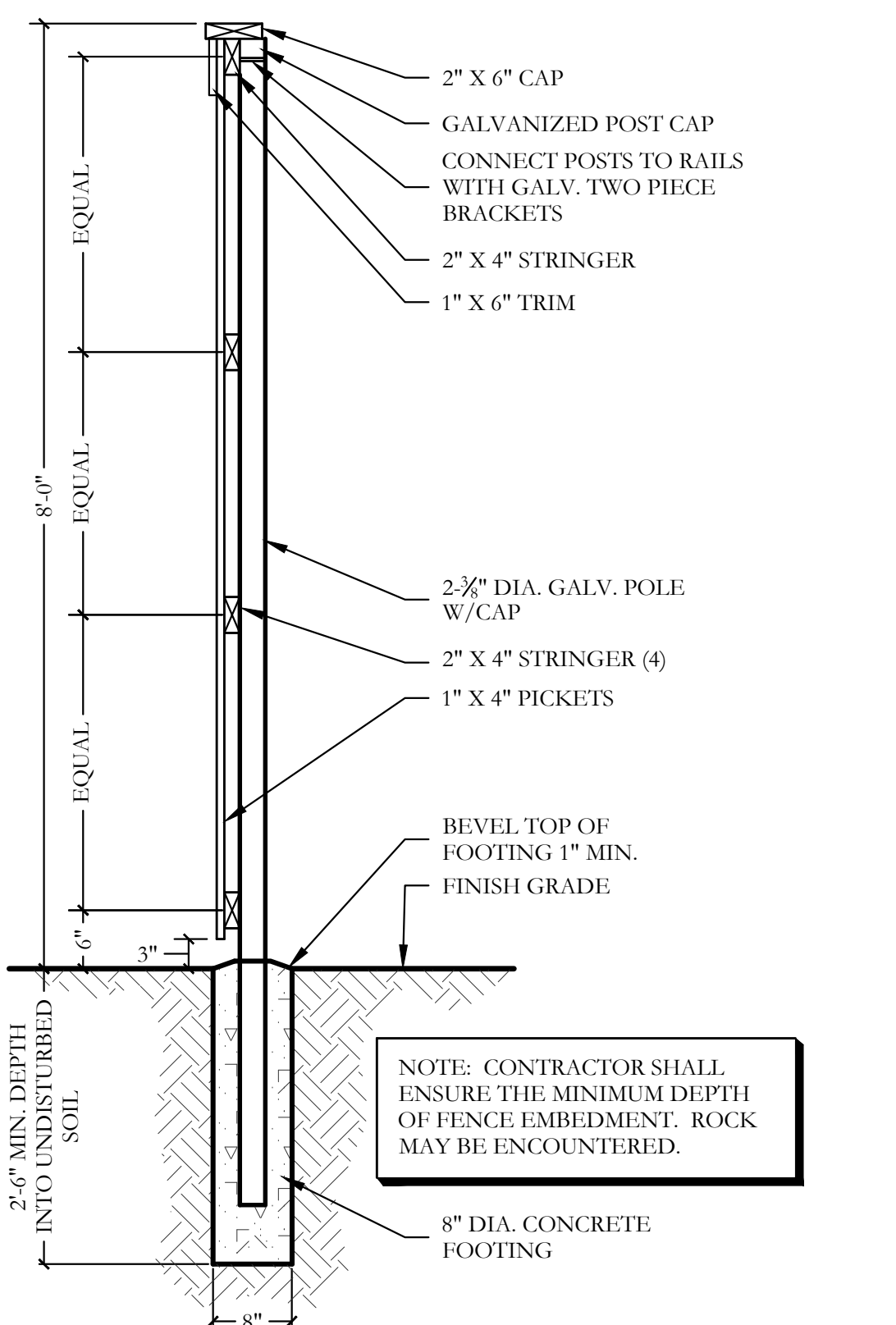


1 ORNAMENTAL METAL FENCE AND GATE
ELEVATION
SCALE: 1/2"=1'-0"



2 PARTIAL 8'-0" HT. WOOD FENCE
ELEVATION
SCALE: 3/4"=1'-0"



3 8'-0" HT. WOOD FENCE
SECTION
SCALE: 3/4"=1'-0"

FENCE LAYOUT NOTES

- THE CONTRACTOR IS RESPONSIBLE FOR MAKING HIMSELF FAMILIAR WITH ALL UNDERGROUND UTILITIES, PIPE AND STRUCTURES WHETHER OR NOT SHOWN ON THE PLANS. THE CONTRACTOR SHALL BE RESPONSIBLE FOR LOCATION OF ALL UNDERGROUND UTILITIES AND WILL BE RESPONSIBLE FOR COSTS INCURRED DUE TO DAMAGE OR REPLACEMENT OF SAID UTILITIES OR STRUCTURES CAUSED BY HIS FORCES. DO NOT WILLFULLY PROCEED WITH CONSTRUCTION, AS DESIGNED, WHEN IT IS OBVIOUS THAT UNKNOWN OBSTRUCTIONS OR CONFLICTS EXIST THAT MAY NOT HAVE BEEN KNOWN DURING DESIGN. SUCH CONDITIONS SHALL BE BROUGHT IMMEDIATELY TO THE ATTENTION OF THE LANDSCAPE ARCHITECT. THE CONTRACTOR SHALL ASSUME FULL RESPONSIBILITY FOR ALL NECESSARY REVISIONS DUE TO FAILURE TO GIVE SUCH NOTIFICATION.
- THE CONTRACTOR SHALL BE RESPONSIBLE FOR THE LAYOUT OF THE PROPOSED WALLS AND COLUMNS. THE OWNER'S ENGINEER SHALL STAKE THE LOCATIONS OF THE PROPERTY, R.O.W. LINES AND EASEMENTS. THE CONTRACTOR SHALL STAKE ALL OF THE FENCE AND COLUMN LOCATIONS FOR REVIEW BY THE OWNER'S REPRESENTATIVE PRIOR TO BEGINNING CONSTRUCTION. THE OWNER'S REPRESENTATIVE MAY MAKE MINOR ALTERATIONS TO THE LAYOUT AFTER STAKING AND BEFORE CONSTRUCTION AT NO ADDITIONAL COST TO THE OWNER.
- ALL "STEPS" IN THE WALL MADE NECESSARY BY GRADE CHANGES OR EXISTING SLOPE SHALL OCCUR ONLY AT MINOR OR MAJOR COLUMNS. THE MINIMUM "STEP" AT A COLUMN SHALL BE 3" AND THE MAXIMUM "STEP" AT A COLUMN SHALL BE 6".
- ALL ELECTRICAL WORK SHALL BE PERFORMED BY A LICENSED ELECTRICIAN AND SHALL BE PERFORMED IN ACCORDANCE WITH ALL APPLICABLE CODES AND REQUIREMENTS.
- THE ELECTRICAL WORK SHALL INCLUDE ALL NECESSARY CONDUITS, WIRE, FITTINGS, FIXTURES TRENCHING AND OTHER MISCELLANEOUS ITEMS NECESSARY TO COMPLETE THE WORK.
- THE CONTRACTOR SHALL BE RESPONSIBLE FOR ALL NECESSARY PERMITS AND CITY ACCEPTANCE.
- THE CONTRACTOR SHALL BE RESPONSIBLE FOR GRADING AS NEEDED FOR FENCE AND COLUMN INSTALLATION. THE CONTRACTOR SHALL RETURN THE SITE TO PRE-CONSTRUCTION CONDITION.

WOOD FENCE NOTES

- THE CONTRACTOR IS RESPONSIBLE FOR MAKING HIMSELF FAMILIAR WITH ALL UNDERGROUND UTILITIES, PIPES, AND STRUCTURES EITHER SHOWN OR NOT SHOWN ON THE PLANS. THE CONTRACTOR WILL BE RESPONSIBLE FOR ANY COST INCURRED DUE TO DAMAGE OR REPLACEMENT OF SAID UTILITIES AND STRUCTURES CAUSED BY HIS FORCES VERIFY LOCATION OF ALL UTILITIES WITH THE TOWN AND VARIOUS UTILITY COMPANIES BEFORE DRILLING PIERS.
- ALL CONCRETE USED IN FOOTINGS SHALL HAVE A MINIMUM COMPRESSIVE STRENGTH OF 3,000 PSI @ 28 DAYS.
- THE CONTRACTOR IS RESPONSIBLE FOR ALL NECESSARY AND REQUIRED PERMITS AND INSPECTIONS. CONSTRUCTION SHALL BE IN ACCORDANCE WITH CITY OF DENTON CODES AND REQUIREMENTS.
- WOOD MATERIAL FOR FENCE:
 - STRINGERS- CEDAR, #2 GRADE OR BETTER.
 - PICKETS- CEDAR, #2 GRADE OR BETTER.
 - CAPS- CEDAR, #2 GRADE OR, BETTER.
- ALL FENCE POST TO BE SCHEDULE 40 - GALVANIZED.
- ALL FASTENERS, NAILS, BRACKETS, STEEL POSTS, ETC. ARE TO BE HOT DIPPED GALVANIZED.
- ALL PICKETS ARE TO BE FASTENED TO THE RAILS USING GALVANIZED SCREWS, STAPLES AND/OR NAILS WILL NOT BE ALLOWED. SCREW WITHOUT SPLITTING MEMBERS; DRILL PILOT HOLES IF NECESSARY. ALL SPLIT MEMBERS WILL BE REQUIRED TO BE REPLACED AT NO ADDITIONAL COST TO THE OWNER.
- ACCURATELY CUT, FIT FASTEN MEMBERS, MAKE PLUMB, LEVEL, TRUE, AND RIGID. DO NOT SPLICE INDIVIDUAL FRAMING MEMBERS BETWEEN SUPPORTS. ERECT FACES OF FRAMING MEMBERS IN STRAIGHT EVEN PLANES TO RECEIVE FINISH MATERIALS. INSTALL STRINGERS WITH BOTTOM EDGES FREE OF DEFECTS. MITER ALL EXPOSED FINISHED JOINTS.
- REMOVE ALL MARKS, STAMPS, DIRT, LOOSE FIBERS FROM ALL WOOD SURFACES.
- CONTRACTOR IS RESPONSIBLE FOR OBTAINING ALL REQUIRED PERMITS.

ORNAMENTAL METAL FENCE NOTES

- THE CONTRACTOR IS RESPONSIBLE FOR MAKING HIMSELF FAMILIAR WITH ALL UNDERGROUND UTILITIES, PIPES, AND STRUCTURES EITHER SHOWN OR NOT SHOWN ON THE PLANS. THE CONTRACTOR WILL BE RESPONSIBLE FOR ANY COST INCURRED DUE TO DAMAGE OR REPLACEMENT OF SAID UTILITIES AND STRUCTURES CAUSED BY HIS FORCES.
- ALL CONCRETE USED IN FOOTING AND PIERS SHALL HAVE A MINIMUM COMPRESSIVE STRENGTH OF 3000 PSI @ 28 DAYS.
- THE CONTRACTOR IS RESPONSIBLE FOR ALL REQUIRED PERMITS AND CITY INSPECTIONS.
- ALL ORNAMENTAL METAL TUBES, POSTS, RAILS AND PICKETS SHALL BE FLUSH AND FREE OF ALL DENTS, SPURS, AND SHARP EDGES AND SHALL BE INSTALLED LEVEL, PLUMB, AND SQUARE.
- PROVIDE CONTINUOUS WELDS ALONG ALL EDGES OF FENCE MEMBERS. GRIND SMOOTH ALL WELDS.
- ALL METAL SURFACES SHALL BE PRIMED AND PAINTED WITH TWO COATS OF URBANE BRONZE (SW7048) BY SHERWIN WILLIAMS PAINT CO., COLOR TO BE FLAT BLACK. CONTRACTOR TO SUBMIT SAMPLES AS REQUIRED.
- CONTRACTOR IS RESPONSIBLE FOR VERIFYING ALL DIMENSIONS BEFORE MANUFACTURING GATES AND FENCE.
- ALL ORNAMENTAL METAL FENCE MEMBERS ARE TO BE TUBULAR MEMBERS IN ACCORDANCE WITH ASTM 513 HOT ROLLED STRUCTURAL STEEL 50,000 PSI TENSILE STRENGTH, 60,000 PSI YIELD STRENGTH.
- FENCE MEMBER SIZES TO BE AS FOLLOWS:
 - PICKETS, 3/4" SQUARE 16 GA.
 - RAILS, 2" X 2" SOLID FLAT 16 GA.
- POSTS, 2" SQUARE 11 GA.
- CONTRACTOR TO PROVIDE SHOP DRAWINGS FOR ALL FENCE GATES AND OPENERS. SHOP DRAWINGS SHALL INCLUDE ALL PRODUCT CUT SHEETS AS WELL AS INSTALLATION AND MANUFACTURING DETAILS. CONTRACTOR TO BE RESPONSIBLE FOR STRUCTURAL DESIGN OF GATES.
- CONCRETE FOOTING FOR POSTS SHALL BE 3X POST WIDTH. GATE IS TO BE SELF CLOSING. FALCON B561BD626 SATIN CHROME DANE SFG CLASSROOM LOCK BY A&H TURE. DEADLOCKING LATCH BOLT BY LEVERS. OUTSIDE LEVER IS LOCKED BY KEY IN OUTSIDE LEVER. INSIDE LEVER IS ALWAYS FREE.
- POSTS SHALL BE PLACED AT A MINIMUM DISTANCE OF 6'-0" O.C. AND A MAXIMUM DISTANCE OF 7'-0" O.C.
- POOL FENCE SHALL MEET LOCAL CODES AND REQUIREMENTS. CONTRACTOR SHALL BE RESPONSIBLE FOR ENSURING COMPLIANCE INCLUDING NECESSARY UPSIZING OF POSTS, PICKETS AND HORIZONTAL BARS AND INCREASING THE HEIGHT OF THE FENCE AS IT APPEARS IN THIS DETAIL AT NO ADDITIONAL COST TO THE OWNER FOR MATERIALS AND/OR LABOR.
- LATCH SHALL BE SELF LATCHING, ON POOL SIDE OF ENCLOSURE AT A MIN. 42" ABOVE FINISH PAVING.
- RESTRICTIVE MESH SHALL HAVE NO OPENINGS GREATER THAN 1/2" AND SHALL.



211 North Lindbergh Blvd.
St. Louis, MO 63141
800.231.1327 tel | 314.754.0835 fax
specify@anovafurnishings.com
anovafurnishings.com

AL19BR2— Allure Bike Rack, 2-bike capacity

Cast aluminum bike rack, surface mount

Material
The bike rack is composed of corrosion-resistant cast aluminum. Use as a stand-alone or arrange in groups. A standard U-lock can be used to meet Association of Pedestrian and Bicycle Professionals (APBP) guidelines for security and functionality. Aluminum is 100% recyclable.
The base has predrilled 4" diameter holes for surface mounting to prevent movement.
Surface mounting is required; mounting hardware is not included.

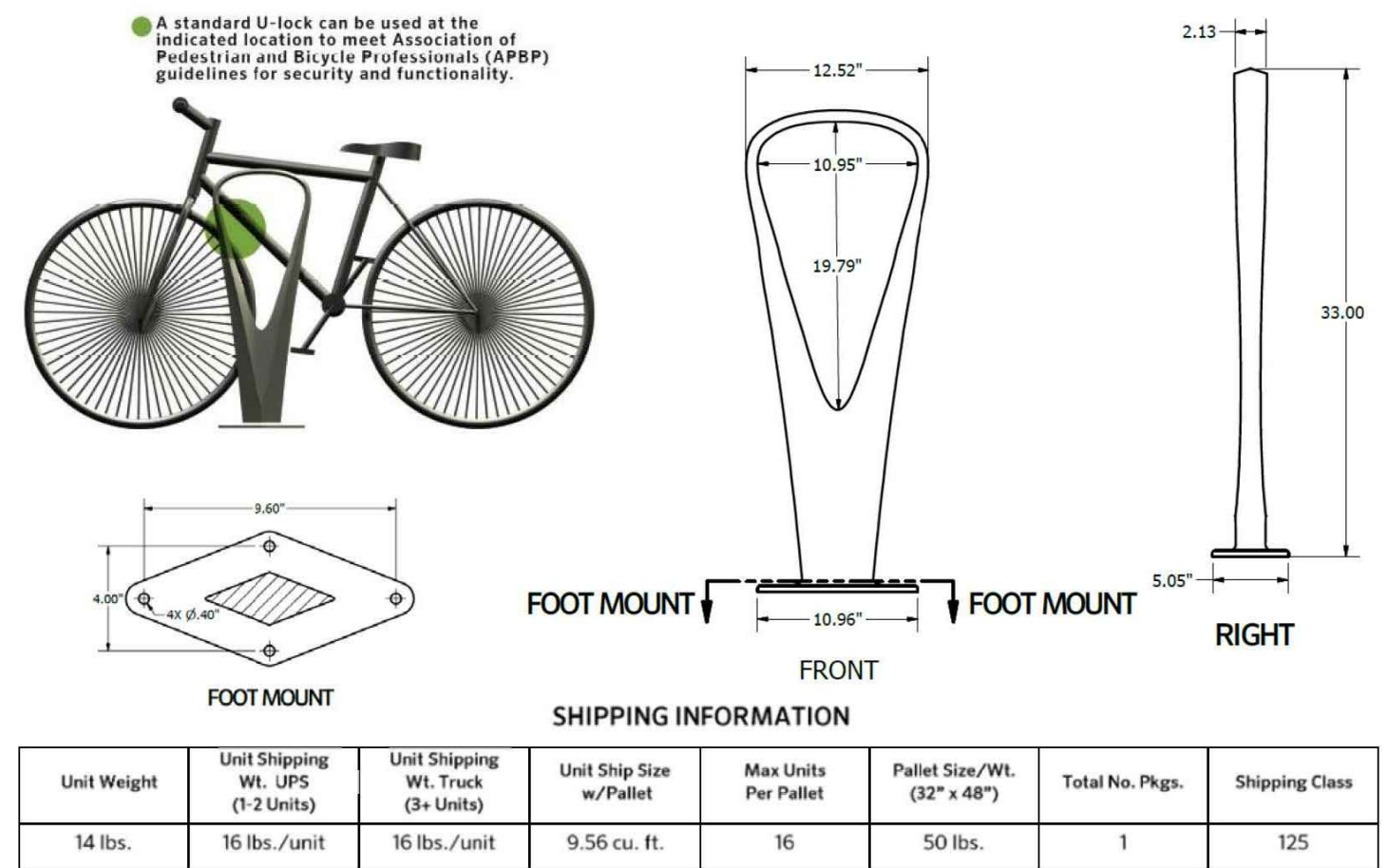
Finish
Face-resistant, powder coated cast aluminum components feature a state-of-the-art primer proven to prevent rusting. Treated components exceed the industry standard by 34% in testing by independent sources.

Color
See website or sales representative for color choices.

Assembly
The bike rack ships fully assembled and ready for use. Surface mounting will require some assembly.

Maintenance
The product is virtually maintenance-free and requires only periodic cleaning with a sponge and a solution of mild detergent and water to remove surface dirt. Do not clean with solvent or petroleum base products.

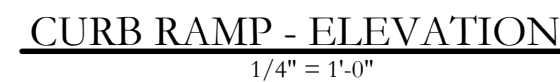
Warranty
20-year limited structural warranty with 7-year finish warranty against fading from the date of purchase. See full details on multi-year warranties for components at www.anovafurnishings.com/warranty.aspx.



Unit Weight	Unit Shipping Wt. (UPS)	Unit Shipping Wt. (Truck)	Unit Ship Size w/Pallet	Max Units Per Pallet	Pallet Size/Wt. (32" x 48")	Total No. Pkgs.	Shipping Class
14 lbs.	16 lbs./unit	16 lbs./unit	9.56 cu. ft.	16	50 lbs.	1	125

11/24/2015 Copyright 2016 ANOVA® Made in U.S.A.

4 BIKE RACK
MANUFACTURER SPECIFICATION SHEET
NTS



PLAYGROUND

CONCRETE RAMP SHALL BE SCORED AT 2" APART, 1/4" WIDE X 1/4" DEEP. GROOVES TO BE STAINED A CONTRASTING COLOR - RED OR APPROVED EQUAL.

5'-0" OR MAX 10% OR PER PLAN 5'-0" OR MAX 10% 6'-0" 24" 8"

10% MAX 10% MAX

3/4" IN 1/8" R40CTS

RAMP BENEATH PLAYGROUND SURFACE

FACE OF PLAYGROUND EDGE

CURB RAMP - PLAN
SCALE: 1/4" = 1'-0"

-
- FINISH GRADE OF SAFETY SURFACING
- TOP OF PLAYGROUND EDGE BEYOND
- 6'-0"
- TOP OF ADJACENT PAVING
- SLOPE TO DRAIN
SEE GRADING PLAN
- 2"
- 24"
- IN. DEPTH OF APPROVED
PLAYGROUND SURFACING
- #3 BARS AT 18" O.C.B.W.
- GROOVED RAMP SURFACE
AS NOTED
- COMPACTED SUBGRADE TO 95%

CURB RAMP - SECTION

SCALE: 1/4"= 1'-0"

4" STONE WALL CAP W/ 1" OVERHANG CONTINUOUS

EXTERIOR STONES TO BE MORTARED ALL SIDES. EXPOSED FACE STONE TO BE EVENLY COURSED W/ ALL MORTAR JOINTS EVENLY RAKED. FACE STONES PER OWNER.

FINISH GRADE

1'-0" CAP

FINISH GRADE

CLAY DRAIN CAP

WALL BACKFILL TO BE FREE OF ALL DEBRIS AND ROCK OVER 1" DIA. COMPACT IN 8" MAX. LIFTS COMPACT @ 90% STANDARD DENSITY.

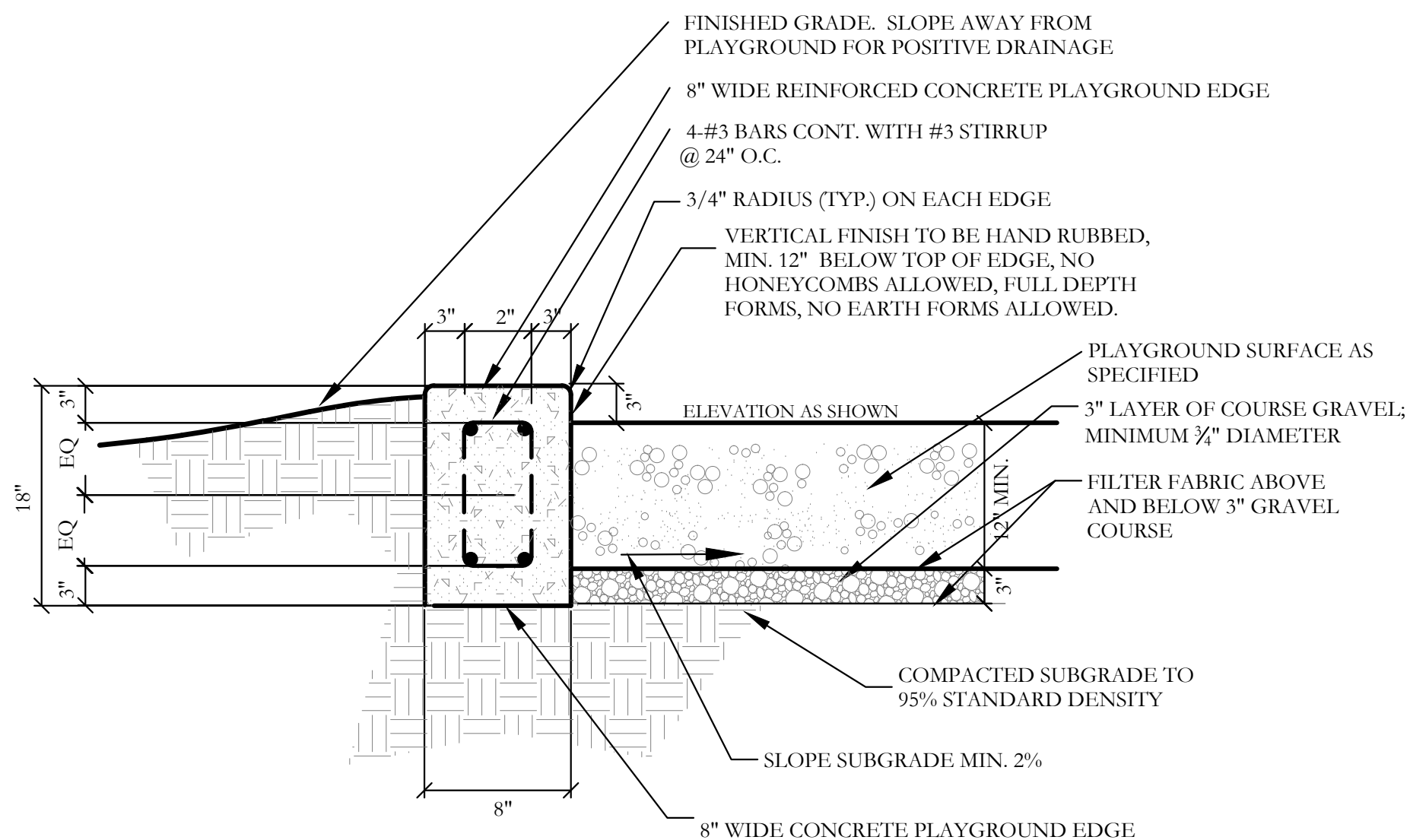
12"x12"x12" DRAIN ROCK COMPOSED OF CLEAN 2"-4" DIAMETER GRANULAR BACKFILL. REQUIRED FOR ALL WALLS.

MORTARED RIP-RAP OR STONE RUBBLE, 12" MAX. DIMENSION, SORTED & NESTED TO MINIMIZE VOIDS.

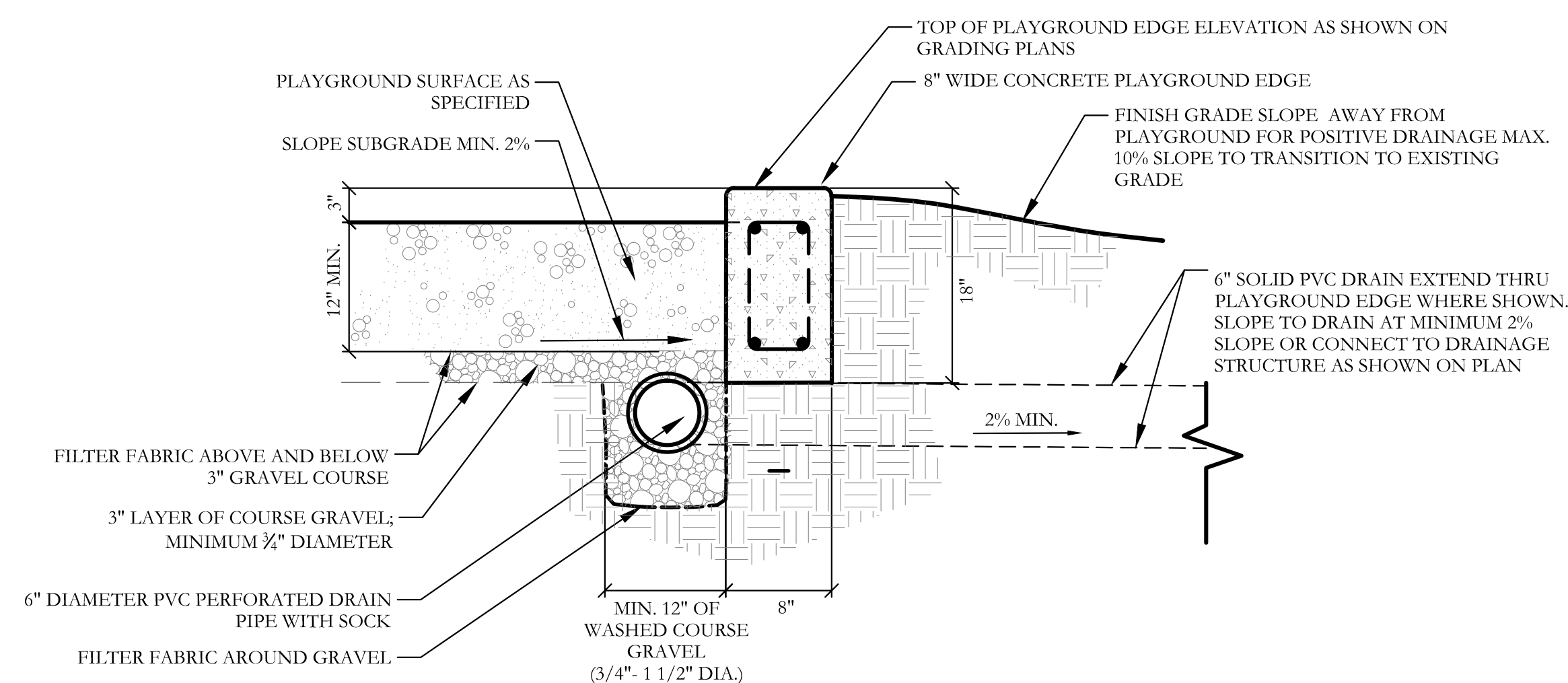
2" PVC WEEP HOLE @ 6'-0" O.C.

Diagram labels: A, B, C, D, E, F, G, H, I, J, K, L, M, N, O, P, Q, R, S, T, U, V, W, X, Y, Z.

SCALE AS SHOWN



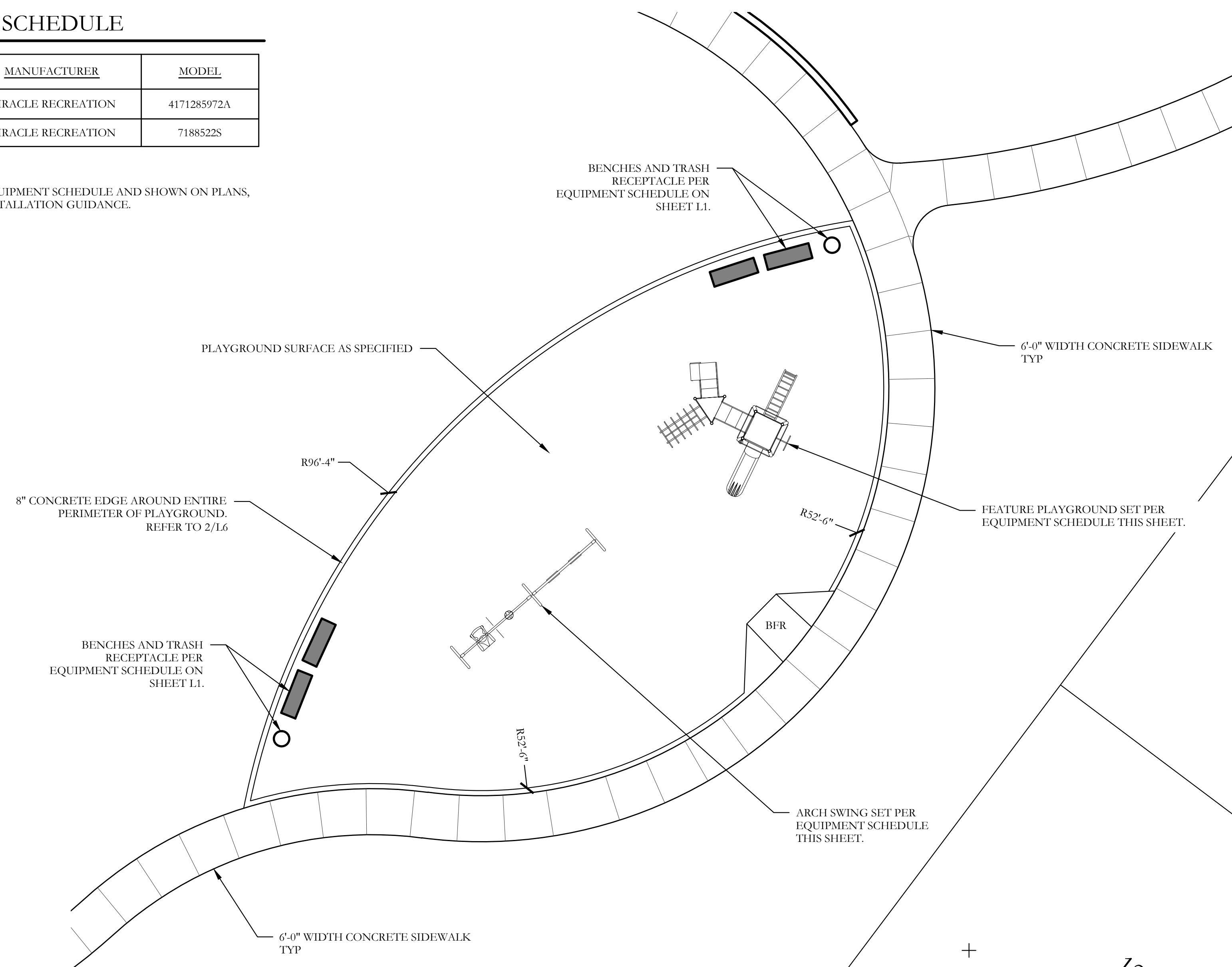
SCALE: 1"= 1'-0"



SCALE: 1"= 10'-0"

PRODUCT REPRESENTATIVE:
FOR ALL PRODUCTS SPECIFIED WITHIN THE EQUIPMENT SCHEDULE AND SHOWN ON PLANS,
CONTACT TOM SAWYERS FOR PRICING AND INSTALLATION GUIDANCE.

THOMAS SAWYERS, CPSI
EMAIL: TSAWYERS@WEBBUILDFUN.COM
PHONE: 972-727-0653



4 PLAYGROUND ENLARGEMENT PLAN



Bar is one inch on original drawing. If not one inch on this sheet, adjust scale as necessary.

One Inch

City of Denton, Denton County, Texas

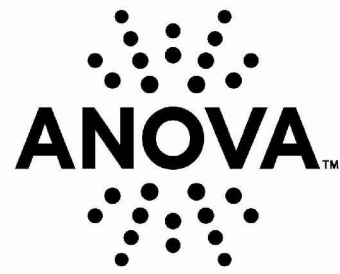
CJS PROJECT NO.

VIN003

SHEET NO.

L6

PD A16-0004



L1371
RENDEZVOUS FLAT BENCH
6' slotted steel flat bench, portable/
surface mount

Material
The seat is 71.12" long and is composed of 12-gauge slotted steel with a .75" gap slotted pattern. The seat is protected by Fusion Advantage™, a plastisol coating with an average .125" thickness and a high-gloss powder coat.

The bench ends are cast iron and are protected by a fade resistant powder coat finish featuring a state of the art primer proven to prevent rusting. The bench is designed to be portable for flexibility in placement, and the legs have feet that can accommodate surface mounting to prevent movement. Mounting hardware is not included. The capacity of the bench is 200 lbs per linear foot.

Finish
Fusion Advantage is a heat fused plastisol coating that creates an impervious rustproof barrier and resists UV deterioration, mildew, staining and fading.

The finish has been tested to the requirements of ASTM E1354 and is determined to be in compliance with California Uniform Fire Code 1103.2.1.4.2.

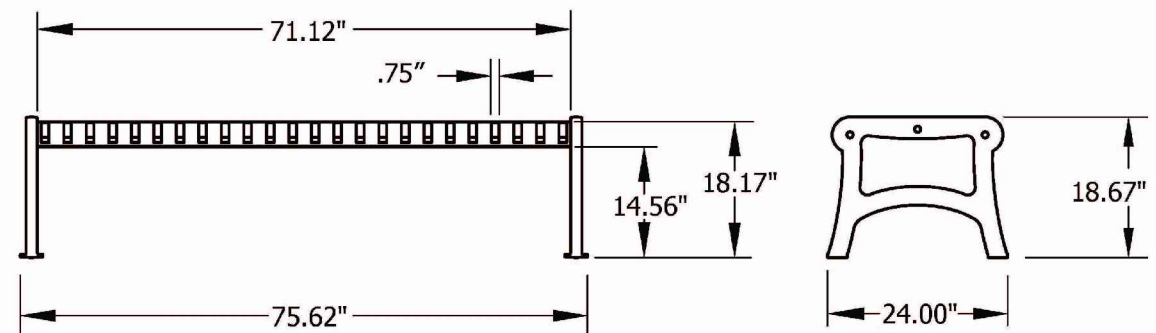
A state of the art primer is applied to all of the under supports, providing extreme rust fighting protection and durability. Treated components exceed the industry standard by 34% in testing by independent sources.

Color
This product is available in the following vibrant colors: Black, Blue, Bronze, Brown, Burgundy, Camel, Charcoal, Evergreen, Gray, Navy, Orange, Purple, Red, Sage, Silver, Teal, Vanilla, White, and Yellow.

Assembly
The bench requires some assembly. Stainless steel assembly hardware is included.

Maintenance
The product is virtually maintenance-free and requires only periodic cleaning with a sponge and a solution of mild detergent and water to remove surface dirt. Do not clean with solvent or petroleum based products.

Warranty
20-year limited structural warranty with 7-year finish warranty from the date of purchase. Fusion Advantage components further warrants components will not rust, peel, chip, crack, mold or mildew for 7 years.



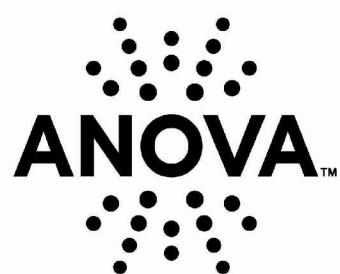
Shipping Information						
Unit Wt.	Unit Shipping Wt. UPS	Unit Shipping Wt. Truck (1+ Units)	Unit Ship Size w/Pallet	Max Units per Pallet	Pallet Wt. 84" x 36"	Total No. Pkgs
143 lbs	N/A	156 lbs/unit	29 cu. ft.	4	100 lbs	3

Revised: 02/06/13

Copyright © 2013 ANOVA™

1 PEDESTRIAN BENCH DETAIL
MANUFACTURER SPECIFICATION SHEET

NTS



L13780H
RENDEZVOUS RECEPTACLE
32-gallon slotted steel receptacle
with rubber feet and plastic liner

Material
The receptacle is 39.00" tall and is composed of 12-gauge slotted steel with a .75" gap slotted pattern. The receptacle is protected by Fusion Advantage™, a plastisol coating with an average .125" thickness and a high-gloss powder coat. The receptacle includes a 14-gauge spun steel open hood top. The top is protected by a fade resistant powder coat finish featuring a state of the art primer proven to prevent rusting. The top includes a 14" security strap and lifts off for easy trash removal.

The receptacle has rubber feet which are adjustable to assist in leveling the receptacle. The capacity of the receptacle is 32 gallons. The reusable plastic liner is made of black high-density polyethylene.

Finish
Fusion Advantage is a heat fused plastisol coating that creates an impervious rustproof barrier and resists UV deterioration, mildew, staining and fading.

The finish has been tested to the requirements of ASTM E1354 and is determined to be in compliance with California Uniform Fire Code 1103.2.1.4.2.

Color
This product is available in the following vibrant colors: Black, Blue, Bronze, Brown, Burgundy, Camel, Charcoal, Evergreen, Gray, Navy, Orange, Purple, Red, Sage, Silver, Teal, Vanilla, White, and Yellow.

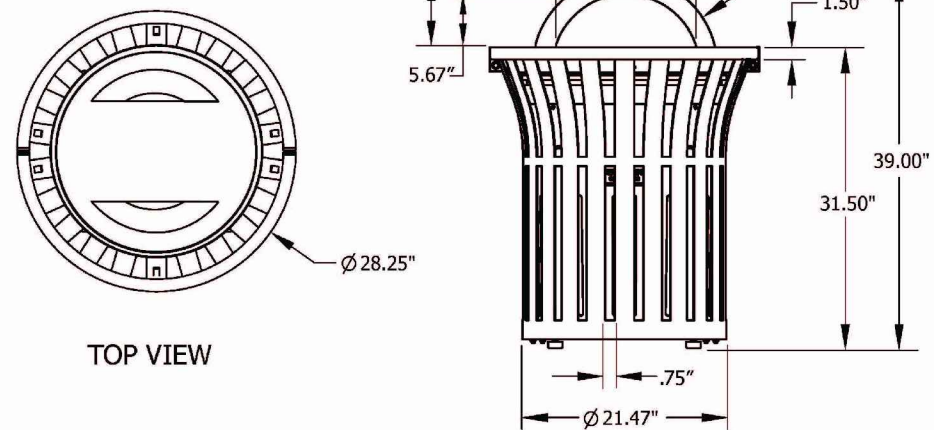
Assembly
The receptacle is shipped fully assembled and ready for use.

Maintenance
The product is virtually maintenance-free and requires only periodic cleaning with a sponge and a solution of mild detergent and water to remove surface dirt. Do not clean with solvent or petroleum based products.

Warranty
20-year limited structural warranty with 7-year finish warranty from the date of purchase. Fusion Advantage components further warrants components will not rust, peel, chip, crack, mold or mildew for 7 years.

Replacement Parts
Black Plastic Liner R-DOM1024

Accessories
F1094 Trad. Inground Mount
F1098 Trad. Surface Mount
F1406 45° Surface Mount
F1407 45° Inground Mount
A1020 Corkscrew Anchor



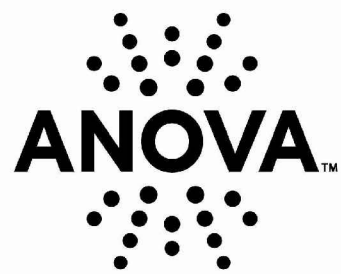
Shipping Information						
Unit Wt.	Unit Shipping Wt. UPS	Unit Shipping Wt. Truck (1+ Units)	Unit Ship Size w/Pallet	Max Units per Pallet	Pallet Wt. 48" x 32"	Total No. Pkgs
95 lbs	N/A	109 lbs/unit	33 cu. ft.	3	50 lbs	2

Revised: 02/06/13

Copyright © 2013 ANOVA™

2 TRASH RECEPTACLE DETAIL
MANUFACTURER SPECIFICATION SHEET

NTS



L1388S
RENDEZVOUS TABLE
46" diameter steel table, 4 contour
swivel seats, portable mount

Accessories
9' Standard Color Umbrella 9LPU-CSC
9' Premium Color Umbrella 9LPU-CPC

Umbrella Brace UBRACE

Material
The table is 46.25" in diameter and features four contour swivel seats. The table top is 12-gauge steel and features a durable 1.5" square steel tube edge. The seats are 12-gauge slotted steel with a .75" gap slotted pattern and feature a reinforced frame connection. The seats swivel 90 degrees to each side for ease of entry and exit and are designed to automatically return to their original position. The table top and seats are protected by Fusion Advantage™, a plastisol coating with an average .125" thickness and a high-gloss powder coat.

The table also features a 1.64" diameter umbrella hole in the center with a built-in umbrella holder. The table top is designed to support 100 lbs per square foot and the seats will support 200 lbs per linear foot.

The frame and legs are made of 2.38" O.D. steel tubing protected by a fade resistant powder coat finish featuring a state of the art primer proven to prevent rusting. The table is portable in design allowing for flexibility in placement. The legs feature feet with predrilled holes for surface mounting to prevent movement. Mounting hardware is not included.

Finish
Fusion Advantage is a heat fused plastisol coating that creates an impervious rustproof barrier and resists UV deterioration, mildew, staining and fading.

The finish has been tested to the requirements of ASTM E1354 and is determined to be in compliance with California Uniform Fire Code 1103.2.1.4.2.

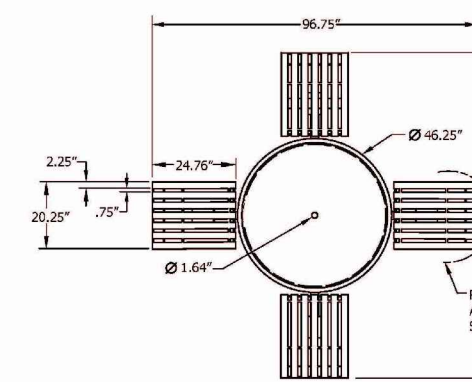
A state of the art primer is applied to all of the under supports, providing extreme rust fighting protection and durability. Treated components exceed the industry standard by 34% in testing by independent sources.

Color
This product is available in the following vibrant colors: Black, Blue, Bronze, Brown, Burgundy, Camel, Charcoal, Evergreen, Gray, Navy, Orange, Purple, Red, Sage, Silver, Teal, Vanilla, White, and Yellow.

Assembly
The table requires some assembly. Stainless steel assembly hardware is included.

Maintenance
The product is virtually maintenance-free and requires only periodic cleaning with a sponge and a solution of mild detergent and water to remove surface dirt. Do not clean with solvent or petroleum based products.

Warranty
20-year limited structural warranty with 7-year finish warranty from the date of purchase. Fusion Advantage components further warrants components will not rust, peel, chip, crack, mold or mildew for 7 years.



Shipping Information						
Unit Wt.	Unit Shipping Wt. UPS	Unit Shipping Wt. Truck (1+ Units)	Unit Ship Size w/Pallet	Max Units per Pallet	Pallet Wt. 84" x 36"	Total No. Pkgs
327 lbs	N/A	347 lbs/unit	42 cu. ft.	2	50 lbs	8

Revised: 04/01/13

Copyright © 2013 ANOVA™

3 TABLE DETAIL
MANUFACTURER SPECIFICATION SHEET

NTS



L1395 — Rendezvous ADA Table with 3 Contour Seats
46" diameter steel ADA table with three contour seats, surface mount

Accessories
9' Standard Fabric Color Umbrella 9LPU-CSC
9' Premium Fabric Color Umbrella 9LPU-CPC
Umbrella Brace UBRACE

Material
The table has a 46.25" diameter table top and features three contour seats and meets ADA requirements. The solid surface top is 12-gauge steel and features a durable 1.5" square steel tube edge. The seats are 12-gauge steel with a .75" gap slotted pattern and feature a reinforced frame connection. The top also features a 1.64" diameter umbrella hole in the center. The top is designed to support 100 lbs. per square foot and the seats will support 200 lbs. per linear foot.

The table frame and legs are made of 2.38" O.D. steel tubing and feature a built-in umbrella holder. The table legs have feet with predrilled 4" diameter holes for surface mounting to prevent movement. Mounting hardware is not included.

Finish
Solid surface steel table top and steel slat seats are protected by the patented Fusion Advantage™ finish. The plastisol coating has an average thickness of .125" and is encapsulated with a richly tinted, high performance powder coating that won't rust, fade, peel, chip, crack, mold or mildew. The finish has been tested to the requirements of ASTM E1354 and determined to be in compliance with California Uniform Fire Code 1103.2.1.4.2.

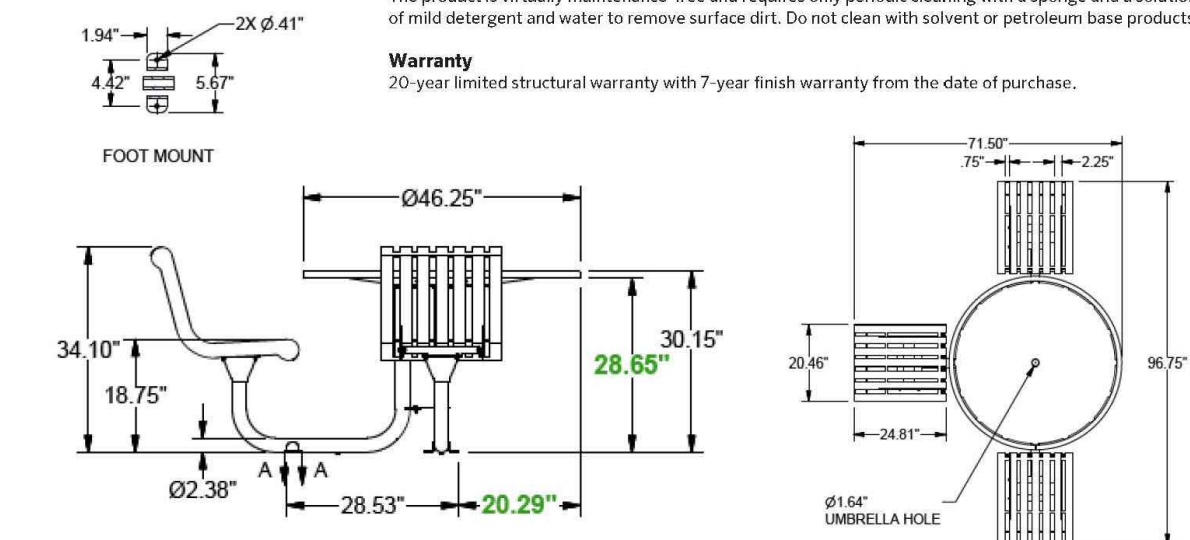
Fade-resistant, powder coated steel frame and legs feature a state-of-the-art primer proven to prevent rusting. Treated components exceed the industry standard by 34% in testing by independent sources.

Color
See website or sales representative for color choices.

Assembly
The table requires some assembly. Stainless steel assembly hardware is included.

Maintenance
The product is virtually maintenance-free and requires only periodic cleaning with a sponge and a solution of mild detergent and water to remove surface dirt. Do not clean with solvent or petroleum based products.

Warranty
20-year limited structural warranty with 7-year finish warranty from the date of purchase.



Shipping Information						
Unit Weight	Unit Shipping Wt. UPS	Unit Shipping Wt. Truck (1+ Units)	Unit Ship Size w/Pallet	Max Units per Pallet	Pallet Size/Wt. (48" x 48")	Total No. Pkgs.
276 lbs.	N/A	301 lbs./unit	42 cu. ft.	2	50 lbs.	8

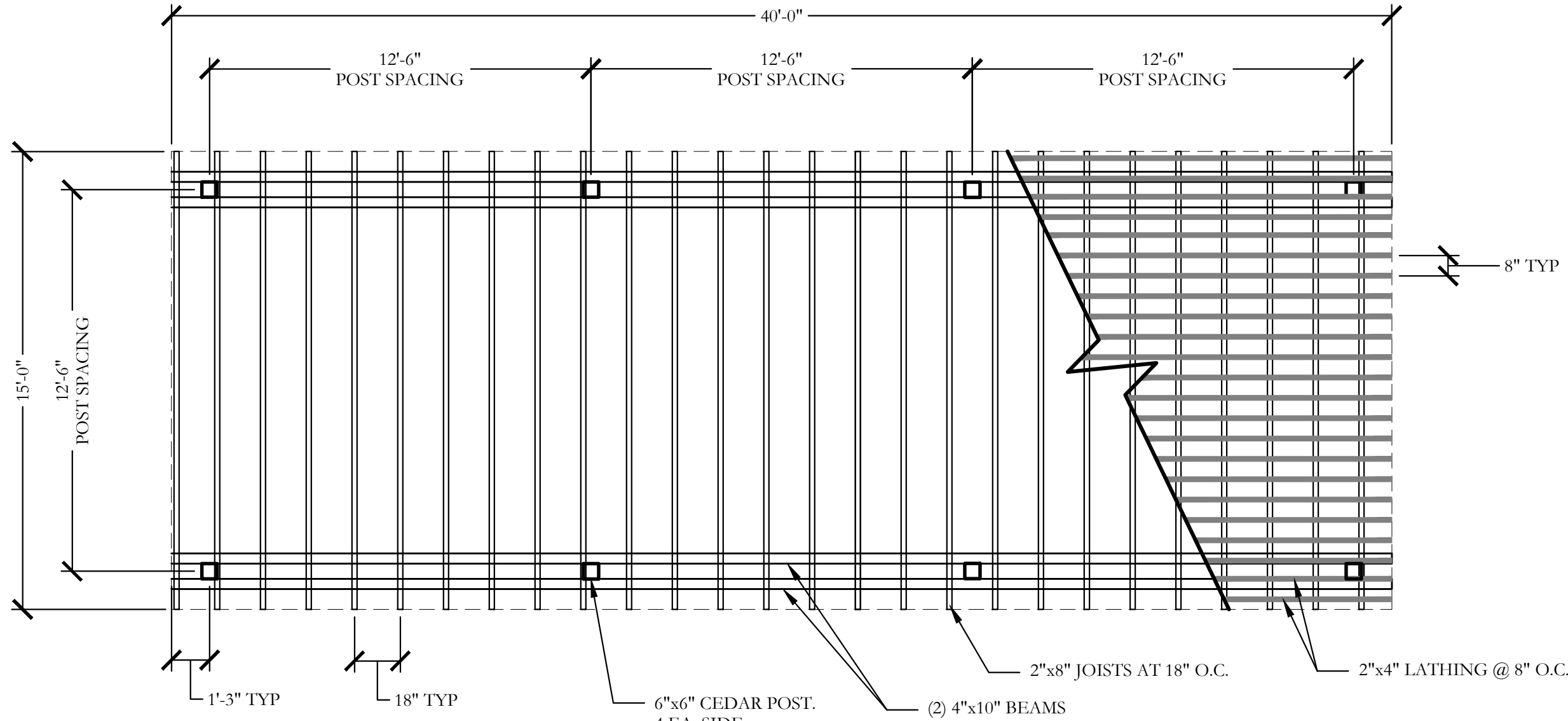
7/8/2014

Copyright © 2014 ANOVA™

Made in U.S.A.

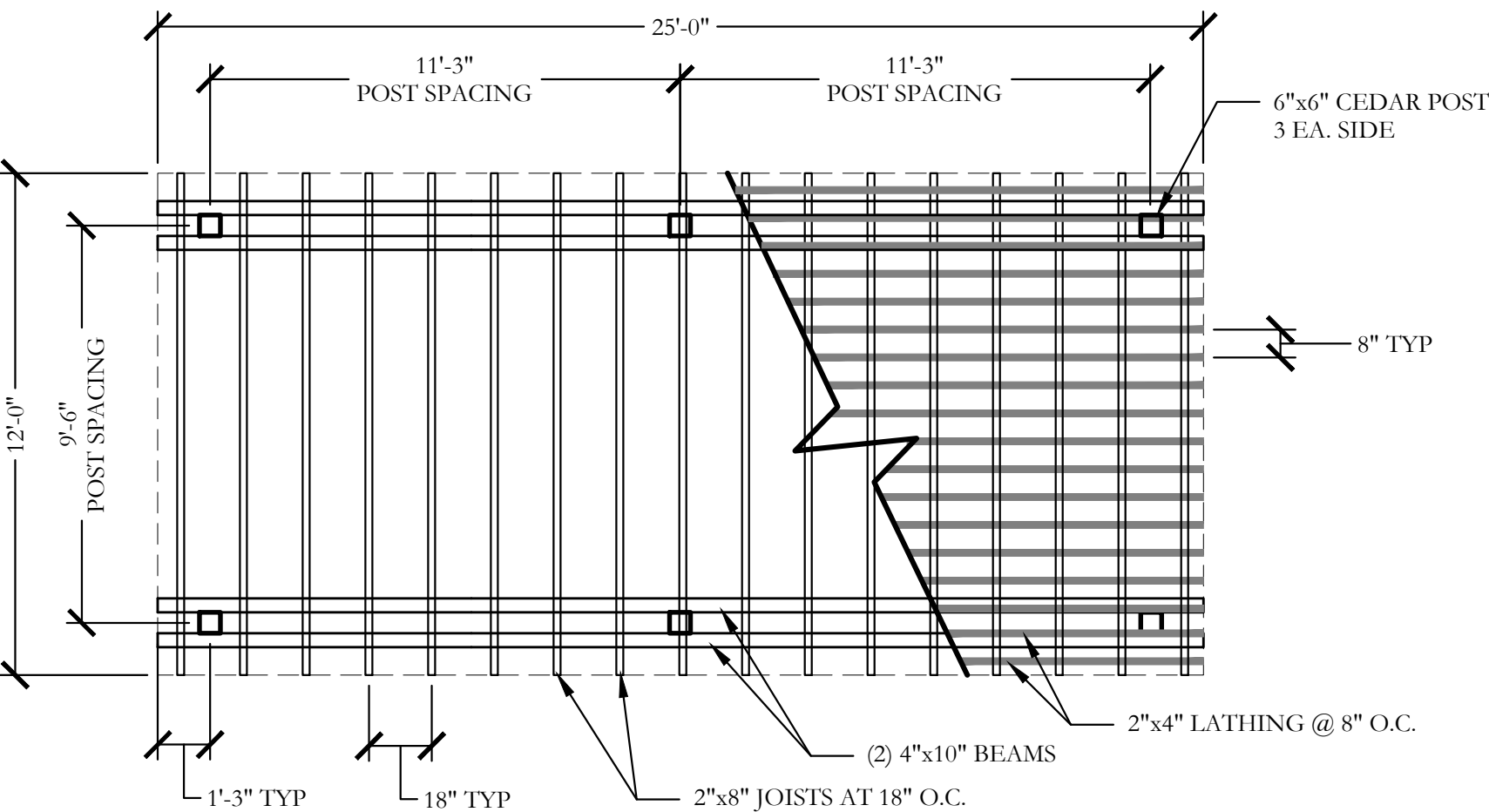
4 ADA TABLE DETAIL
MANUFACTURER SPECIFICATION SHEET

NTS



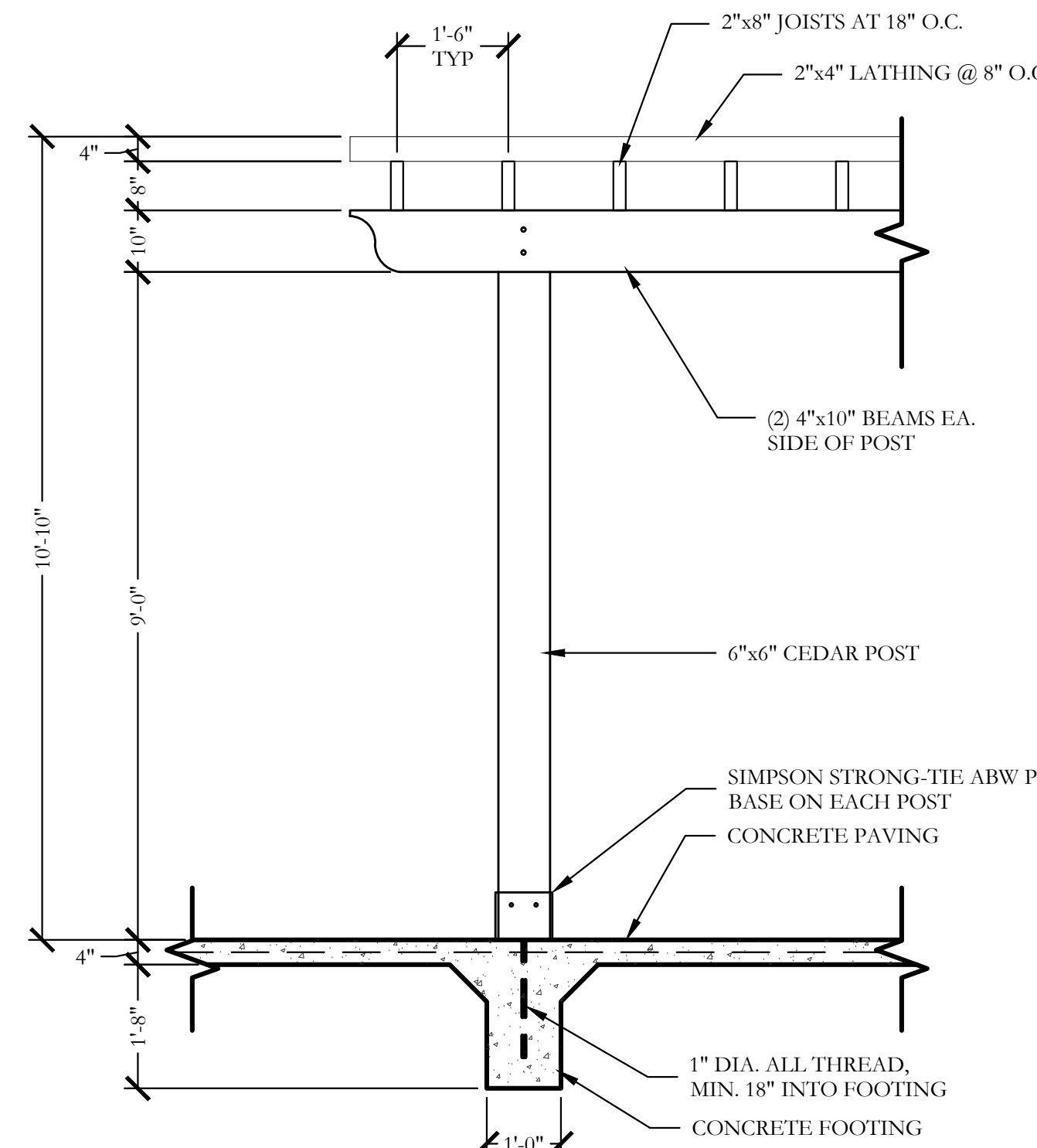
5 CEDAR SHADE STRUCTURE LAYOUT (15'x40')
PLAN

SCALE: 1/4" = 1'-0"



6 CEDAR SHADE STRUCTURE LAYOUT (12'x25')
PLAN

SCALE: 1/4" = 1'-0"



7 CEDAR SHADE STRUCTURE DETAILS
SECTION

SCALE: 1/2" = 1'-0"

CEDAR SHADE STRUCTURE NOTES

1. THE CONTRACTOR IS RESPONSIBLE FOR MAKING HIMSELF FAMILIAR WITH ALL UNDERGROUND UTILITIES, PIPES, AND STRUCTURES EITHER SHOWN OR NOT SHOWN ON THE PLANS. THE CONTRACTOR WILL BE RESPONSIBLE FOR ANY COST INCURRED DUE TO DAMAGE OR REPLACEMENT OF SAID UTILITIES AND STRUCTURES CAUSED BY HIS FORCES VERIFY LOCATION OF ALL UTILITIES WITH THE CITY AND VARIOUS UTILITY COMPANIES BEFORE DRILLING PIERS.
2. ALL CONCRETE USED IN FOOTINGS SHALL HAVE A MINIMUM COMPRESSIVE STRENGTH OF 3000 PSI @ 28 DAYS.
3. THE CONTRACTOR IS RESPONSIBLE FOR ALL NECESSARY AND REQUIRED PERMITS AND INSPECTIONS. CONSTRUCTION SHALL BE IN ACCORDANCE WITH CITY OF FRISCO CODES AND REQUIREMENTS.
4. WOOD MATERIAL FOR FENCE
 - 4.1. JOIST-CEDAR, #2 GRADE OR BETTER.
 - 4.2. BEAM-CEDAR, #2 GRADE OR BETTER.
 - 4.3. POST-CEDAR, #2 GRADE OR BETTER.
5. ALL FASTENERS, NAILS, BRACKETS, STEEL POSTS, ETC., ARE TO BE HOT DIPPED GALVANIZED.
6. ACCURATELY CUT, FIT FASTEN MEMBERS, MAKE PLUMB, LEVEL, TRUE, AND RIGID. DO NOT SPICE INDIVIDUAL FRAMING MEMBERS BETWEEN SUPPORTS. ERRECT FACES OF FRAMING MEMBERS IN STRAIGHT EVEN PLANES TO RECEIVE FINISH MATERIALS. REMOVE ALL MARKS, STAMPS, DIRT, LOOSE FIBERS FROM ALL WOOD SURFACES.
7. CONTRACTOR IS RESPONSIBLE FOR OBTAINING ALL REQUIRED PERMITS.

CODY JOHNSON
s • t • u • d • i • o



June 22, 2016

AMENITY CENTER FACILITY

Site Details

Country Lakes North - Phase 3A-B Amenity Center

City of Denton, Denton County, Texas

CJS PROJECT NO.

VIN003

SHEET NO.

L7

PDA16-0004