

PLANT LEGEND					
SYMBOL	KEY	COMMON NAME	SCIENTIFIC NAME	SIZE	SPACING
	LO	LIVE OAK	QUERCUS VIRGINIANA	3" CALIPER	AS SHOWN
	SO	SHUMARD OAK	QUERCUS SHUMARDII	3" CALIPER	AS SHOWN
	LE	LACEBARK ELM	ULMUS PARVIFOLIA	3" CALIPER	AS SHOWN
	CE	CEDAR ELM	ULMUS CRASSIFOLIA	3" CALIPER	AS SHOWN
	LGM	LITTLE GEM MAGNOLIA	MAGNOLIA GRANDIFLORA 'LITTLE GEM'	2" CALIPER	AS SHOWN
	SH	SAVANNAH HOLLY	ILEX X ATTENUATA 'SAVANNAH'	2" CALIPER	AS SHOWN
	CM	MUSKOGEE CRAPE MYRTLE	LAGERSTROEMIA INDICA X FAURIEI 'MUSKOGEE'	2" CALIPER	AS SHOWN
		PURPLE DIAMOND LOROPETALUM	LOROPETALUM CHINENSIS 'PURPLE DIAMOND'	7 GALLON	48" O.C.
		DWARF BURFORD HOLLY	ILEX CORNUTA 'DWARF BURFORD'	5 GALLON	36" O.C.
		KNOCKOUT ROSE	ROSA SPP.	7 GALLON	36" O.C.
		MORNING LIGHT MISCANTHUS	MISCANTHUS SINENSIS 'MORNING LIGHT'	3 GALLON	36" O.C.
		PINKIE INDIAN HAWTHORN	RHAPHIOLEPIS INDICA 'PINKIE'	3 GALLON	36" O.C.
		INDIAN HAWTHORN 'SNOW'	RHAPHIOLEPIS INDICA 'SNOW'	3 GALLON	36" O.C.
		RED YUCCA	HESPERALOE PARVIFLORA	3 GALLON	36" O.C.
		DWARF WAYMYRTLE	MYRICA SPP.	3 GALLON	36" O.C.
		GULF MUHLY GRASS	MUHLENBERGIA CAPILLARIS 'REGAL MIST'	1 GALLON	24" O.C.
		LIRIOPE GRASS	LIRIOPE MUSCARI	1 GALLON	12" O.C.
		TAM JUNIPER	JUNIPERUS SABINA 'TAMARISCIFOLIA'	3 GALLON	36" O.C.
		WEeping LOVE GRASS	ERAGROSTIS CURVULA	1 GALLON	18" O.C.
		ANNUAL COLOR	TO BE SELECTED BY OWNER	4" POT	8" O.C.
		COMMON BERMUDA GRASS	CYNODON DACTYLON	SQUARE FEET	SOLID SOD
		OKLAHOMA RIVER ROCK		SQUARE FEET	100% COVERAGE
			3" DEPTH RIVER ROCK BED WITH LANDSCAPE FABRIC BENEATH AS SHOWN IN DETAILS. RIVER ROCK SHALL INCLUDE A MIXTURE OF TANS, BROWNS, GRAYS AND PINKS. RIVER ROCK SHALL BE AN EQUAL COMBINATION OF 1-2" AND 2-4" IN SIZE. REFER TO DETAIL 3/L3.		

CODY JOHNSON
s.t.u.d.i.o

12017 CHATTAHOOCHEE DR. FRESCO, TEXAS 75605
PH: (936) 570-0162
EMAIL: CODY@CODYJOHNSONSTUDIO.COM

REGISTERED LANDSCAPE ARCHITECT
CODY L. JOHNSON
2833
STATE OF TEXAS
June 22, 2016

NORTH

20 10 0 20
Scale: 1" = 20'-0"

Bar is one inch on original drawing. If not one inch on this sheet, adjust scale as necessary.

One Inch

AMENITY CENTER FACILITY

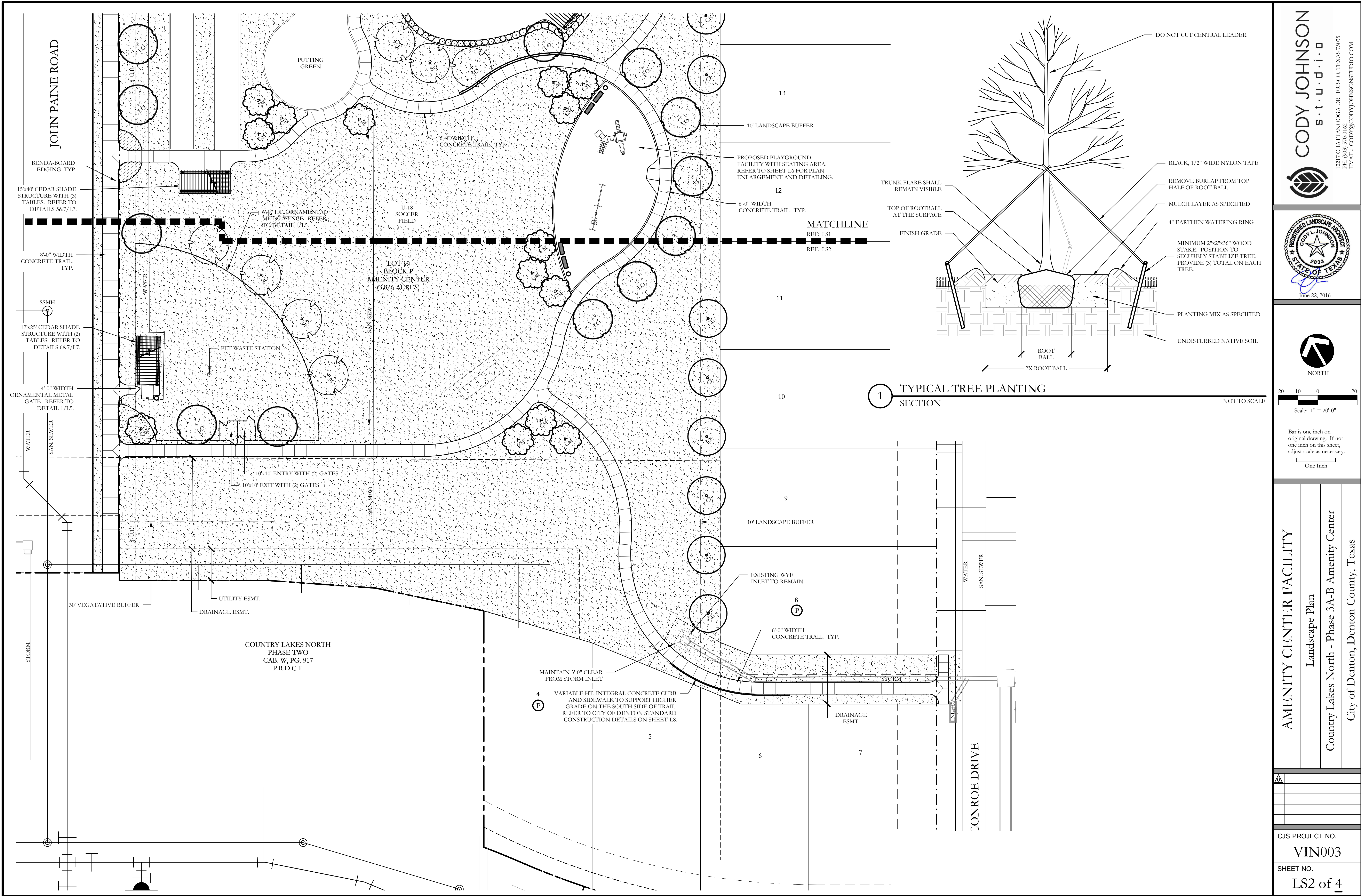
Landscape Plan

Country Lakes North - Phase 3A-B Amenity Center

City of Denton, Denton County, Texas

CJS PROJECT NO.
VIN003

SHEET NO.
LS1 of 4



LANDSCAPE PROVIDED

REQUIRED: 10'-0" WIDTH LANDSCAPE BUFFER WITH (1) ONE TREE PER 30 LINEAR FEET.
PROVIDED: 10'-0" WIDTH LANDSCAPE BUFFER WITH (1) ONE TREE PER 30 LINEAR FEET
ON EAST BOUNDARY LINE. WOOD FENCE WILL BE PROVIDED BY EACH
HOMEOWNER ON EACH PRIVATE LOT.

REQUIRED: 30'-0" WIDTH LANDSCAPE BUFFER.
PROVIDED: 30'-0" WIDTH LANDSCAPE BUFFER ALONG SOUTHERN BOUNDARY LINE.

- PARKING LOT LANDSCAPE PROVIDED:
- GREATER THAN 7% OF THE TOTAL PARKING AREA IS PROPOSED TO BE LANDSCAPED WITH SHRUBS AND GROUND COVER.
 - GREATER THAN 15% OR 1,775 SQ. FT. OF THE REQUIRED PARKING IS PROPOSED TO BE COVERED WITH TREE CANOPY. (12 TREES PROVIDED WITH 12,912 TOTAL COVERAGE AT MATURE SPREAD)
 - SCREENING OF THE PARKING LOT IS PROVIDED BY PROPOSING A 3' HT. EVERGREEN HEDGE AND SHADE TREES PLANTED EVERY 40 LINEAR FEET BETWEEN THE PARKING LOT AND R.O.W.

PROPOSED USE: PRIVATE RECREATION CENTER

LAND AREA: 166,660.56 S.F. OR 3.26 ACRES

TOTAL SQUARE FEET OF IMPERVIOUS SURFACE: 44,960.56 S.F.

NO EXISTING TREES LIE WITHIN THE SITE.

TOTAL AREA OF NEW TREE CANOPY: 115,100 S.F. OR 70%

TOTAL LANDSCAPED OPEN AREAS: 121,700 S.F. OR 73%

TOTAL PARKING LOT AREA: 11,820 S.F. OR 7%

ALL LANDSCAPED AREAS SHALL BE IRRIGATED WITH AN AUTOMATIC IRRIGATION SYSTEM AS SHOWN ON IRRIGATION PLANS, THIS SET.

PLANT LIST

KEY	ESTIMATED QUANTITY	COMMON NAME	SCIENTIFIC NAME	SIZE	SPACING	REMARKS
LO	26	LIVE OAK	QUERCUS VIRGINIANA	3" CALIPER	AS SHOWN	NURSERY GROWN; FULL HEAD; MINIMUM BRANCHING HEIGHT AT 6'-0"; MINIMUM 10'-0" OVERALL HEIGHT.
SO	10	SHUMARD OAK	QUERCUS SHUMARDII	3" CALIPER	AS SHOWN	NURSERY GROWN; FULL HEAD; MINIMUM BRANCHING HEIGHT AT 6'-0"; MINIMUM 10'-0" OVERALL HEIGHT.
LE	6	LACEBARK ELM	ULMUS PARVIFOLIA	3" CALIPER	AS SHOWN	NURSERY GROWN; FULL HEAD; MINIMUM BRANCHING HEIGHT AT 6'-0"; MINIMUM 10'-0" OVERALL HEIGHT.
CE	15	CEDAR ELM	ULMUS CRASSIFOLIA	3" CALIPER	AS SHOWN	NURSERY GROWN; FULL HEAD; MINIMUM BRANCHING HEIGHT AT 6'-0"; MINIMUM 10'-0" OVERALL HEIGHT.
LGM	6	LITTLE GEM MAGNOLIA	MAGNOLIA GRANDIFLORA 'LITTLE GEM'	2" CALIPER	AS SHOWN	NURSERY GROWN; FULL HEAD; MINIMUM 8'-0" OVERALL HEIGHT.
SH	2	SAVANNAH HOLLY	ILEX X ATTENUATA 'SAVANNAH'	2" CALIPER	AS SHOWN	NURSERY GROWN; FULL HEAD; MINIMUM 8'-0" OVERALL HEIGHT.
CM	23	MUSKOGEE CRAPE MYRTLE	LAGERSTROEMIA INDICA X FAURIEI 'MUSKOGEE'	2" CALIPER	AS SHOWN	NURSERY GROWN; FULL HEAD; MINIMUM 8'-0" OVERALL HEIGHT.
	9	PURPLE DIAMOND LOROPETALUM	LOROPETALUM CHINENSIS 'PURPLE DIAMOND'	7 GALLON	48" O.C.	CONTAINER GROWN; FULL PLANT.
	105	DWARF BURFORD HOLLY	ILEX CORNUTA 'DWARF BURFORD'	5 GALLON	36" O.C.	CONTAINER GROWN; FULL PLANT.
	3	KNOCKOUT ROSE	ROSA SPP.	7 GALLON	36" O.C.	CONTAINER GROWN; FULL PLANT.
	14	MORNING LIGHT MISCANTHUS	MISCANTHUS SINENSIS 'MORNING LIGHT'	3 GALLON	36" O.C.	CONTAINER GROWN; FULL PLANT.
	47	PINKIE INDIAN HAWTHORN	RHAPHOLEPIS INDICA 'PINKIE'	3 GALLON	36" O.C.	CONTAINER GROWN; FULL PLANT.
	33	INDIAN HAWTHORN SNOW	RHAPHOLEPIS INDICA 'SNOW'	3 GALLON	36" O.C.	CONTAINER GROWN; FULL PLANT.
	18	RED YUCCA	HESPERALOE PARVIFLORA	3 GALLON	36" O.C.	CONTAINER GROWN; FULL PLANT.
	12	DWARF WAYMYRTLE	MYRICA SPP.	3 GALLON	36" O.C.	CONTAINER GROWN; FULL PLANT.
	210	GULF MUHLY GRASS	MUHLENBERGIA CAPILLARIS 'REGAL MIST'	1 GALLON	24" O.C.	CONTAINER GROWN; FULL PLANT.
	500	LIRIOPE GRASS	LIRIOPE MUSCARI	1 GALLON	12" O.C.	CONTAINER GROWN; FULL PLANT.
	130	TAM JUNIPER	JUNIPERUS SABINA 'TAMARISCIFOLIA'	3 GALLON	36" O.C.	CONTAINER GROWN; FULL PLANT.
	720	WEeping LOVE GRASS	ERAGROSTIS CURVULA	1 GALLON	18" O.C.	CONTAINER GROWN; FULL PLANT.
	450	ANNUAL COLOR	TO BE SELECTED BY OWNER	4" POT	8" O.C.	CONTAINER GROWN; FULL PLANT.
	117,000	COMMON BERMUDA GRASS	CYNODON DACTYLON	SQUARE FEET	SOLID SOD	MINIMUM 100% COVERAGE ALL AREAS SHOWN
	270	OKLAHOMA RIVER ROCK	N/A	SQUARE FEET	SOLID COVERAGE	3" DEPTH RIVER ROCK BED WITH LANDSCAPE FABRIC BENEATH AS SHOWN IN DETAILS. RIVER ROCK SHALL INCLUDE A MIXTURE OF TANS, BROWNS, GRAYS AND PINKS. RIVER ROCK SHALL BE AN EQUAL COMBINATION OF 1-2" AND 2-4" IN SIZE. REFER TO DETAIL 3/LS3.

GENERAL LANDSCAPE NOTES

INSPECTIONS:

- NO EXCAVATION SHALL OCCUR IN CITY R.O.W. WITHOUT A R.O.W. PERMIT--CONTACT THE PUBLIC WORKS DEPARTMENT.
- THE CONTRACTOR SHALL MARK ALL WATER LINES, SEWER LINES, AND TREE LOCATIONS PRIOR TO CALLING FOR ROW INSPECTION AND PERMIT.
- THE LANDSCAPE INSTALLATION SHALL COMPLY WITH APPROVED LANDSCAPE DRAWINGS PRIOR TO FINAL ACCEPTANCE BY THE CITY AND ISSUANCE OF A CERTIFICATE OF OCCUPANCY.
- WATER METERS, CLEANOUTS AND OTHER APPURTENANCES, SHALL BE ACCESSIBLE, ADJUSTED TO GRADE, CLEARLY MARKED WITH FLAGGING AND COMPLIANT WITH PUBLIC WORKS DEPARTMENT STANDARDS PRIOR TO CALLING FOR FINAL LANDSCAPE AND ROW INSPECTIONS.

LANDSCAPE STANDARDS:

- PLANTINGS AND LANDSCAPE ELEMENTS SHALL COMPLY WITH THE CITY'S ENGINEERING DESIGN STANDARDS, PUBLIC R.O.W. VISIBILITY REQUIREMENTS.
- UNLESS OTHERWISE SPECIFIED, TREES SHALL BE PLANTED NO LESS THAN 4' FROM CURBS, SIDEWALKS, UTILITY LINES, SCREENING WALLS AND OTHER STRUCTURES. THE CITY HAS FINAL APPROVAL FOR ALL TREE PLACEMENTS.
- A MINIMUM THREE FEET (3') RADIUS AROUND A FIRE HYDRANT MUST REMAIN CLEAR OF LANDSCAPE PURSUANT TO THE FIRE CODE.
- STREET TREES, WHERE REQUIRED, SHALL BE (10') MINIMUM FROM THE EDGE OF A STORM SEWER CURB INLET BOX AND THE EDGE OF THE ROOT BALL SHALL BE (4') MINIMUM FROM THE WATER METER.
- THE AMERICAN STANDARD FOR NURSERY STOCK (ANSI Z60-1-2004) SPECIFICATIONS SHALL GOVERN PLANT QUALIFICATIONS, GRADES, AND STANDARDS.
- TREE PLANTING SHALL COMPLY WITH DETAILS HEREIN AND THE INTERNATIONAL SOCIETY OF ARBORICULTURE (ISA) STANDARDS.
- A 2-3" LAYER OF MULCH SHALL BE PROVIDED AROUND THE BASE OF THE PLANTED TREE. THE MULCH SHALL BE PULLED BACK 4" FROM THE TRUNK OF THE TREE.
- TREE PITS SHALL BE TESTED FOR WATER PERCOLATION. IF WATER DOES NOT DRAIN OUT OF TREE PIT WITHIN 24 HOURS, THE TREE SHALL BE MOVED OR DRAINAGE SHALL BE PROVIDED.
- ALL BEDS TO HAVE 3" OF COMPOSTED SOIL, LIVING EARTH TECHNOLOGY, OR APPROVED EQUAL TILLED AND TURNED TO A DEPTH OF 8" MINIMUM.
- ALL PLANT BEDS SHALL BE TOP-DRESSED WITH A MINIMUM OF 3 INCHES OF HARDWOOD MULCH.
- NATIVE SITE TOPSOIL IS TO BE PROTECTED FROM EROSION OR STOCKPILED. NATIVE SITE TOPSOIL SHALL BE LABORATORY TESTED BY AND ACCREDITED LABORATORY AND AMENDED PER SAID LABORATORY'S RECOMMENDATIONS.

IRRIGATION STANDARDS:

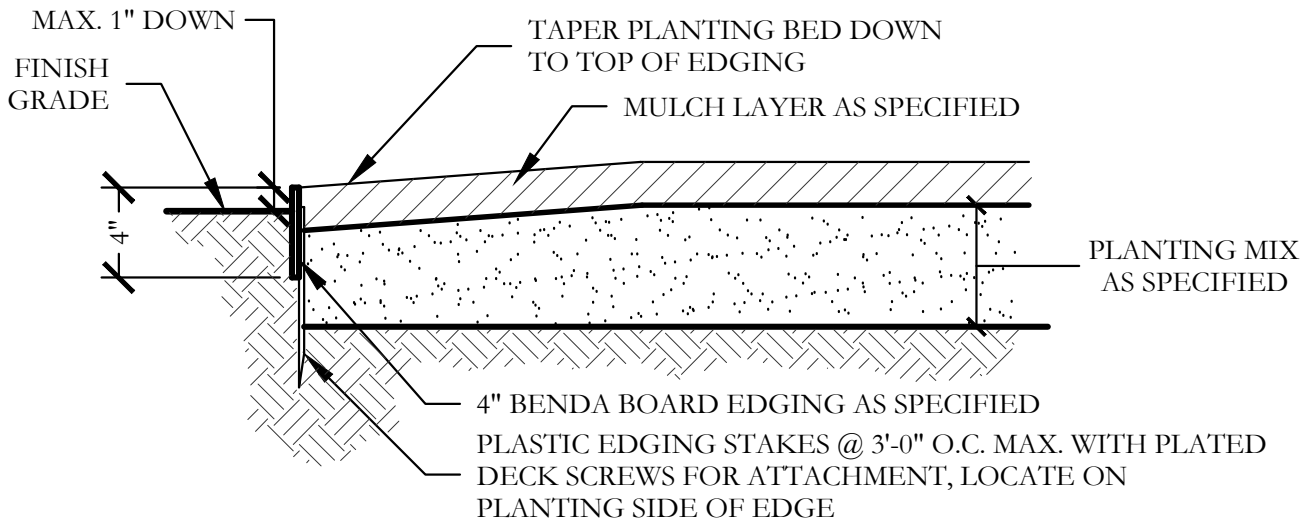
- ANY CHANGES TO THESE APPROVED IRRIGATION DRAWINGS SHALL BE AUTHORIZED BY THE CITY.
- CONTACT DEVELOPMENT SERVICES FOR AN IRRIGATION PERMIT PRIOR TO INSTALLING THE IRRIGATION SYSTEM.
- IRRIGATION OVER-SPRAY ON STREETS AND WALKS IS PROHIBITED.
- MAINLINES, VALVES, OR CONTROL WIRES SHALL NOT BE LOCATED IN THE CITY'S ROW.
- ET IRRIGATION CONTROLLERS SHALL BE PROGRAMMED AND ADJUSTED TO NOT EXCEED THE LANDSCAPE WATER ALLOWANCE (LWA) PRIOR TO APPROVAL OF LANDSCAPE INSTALLATION.
- VALVES SHALL BE LOCATED A MINIMUM OF (3') AWAY FROM STORM SEWERS, AND SANITARY SEWER LINES AND 5 FEET FROM CITY FIRE HYDRANTS AND WATER VALVES.
- THE BORE DEPTH UNDER STREETS, DRIVE AISLES, AND FIRE LANES SHALL PROVIDE (2') OF CLEARANCE (MINIMUM).
- IRRIGATION HEADS THAT RUN PARALLEL AND NEAR PUBLIC WATER AND SANITARY SEWER LINES, SHALL BE FED FROM STUBBED LATERALS OR BULL-HEADS. A MINIMUM FIVE FOOT (5') SEPARATION IS REQUIRED BETWEEN IRRIGATION MAIN LINES AND LATERALS THAT RUN PARALLEL TO PUBLIC WATER AND SANITARY SEWER LINES.
- NO VALVES, BACKFLOW PREVENTION ASSEMBLIES, QUICK COUPLERS ETC. SHALL BE LOCATED CLOSER THAN 10' FROM THE CURB AT STREET OR DRIVE INTERSECTION.

MAINTENANCE STANDARDS:

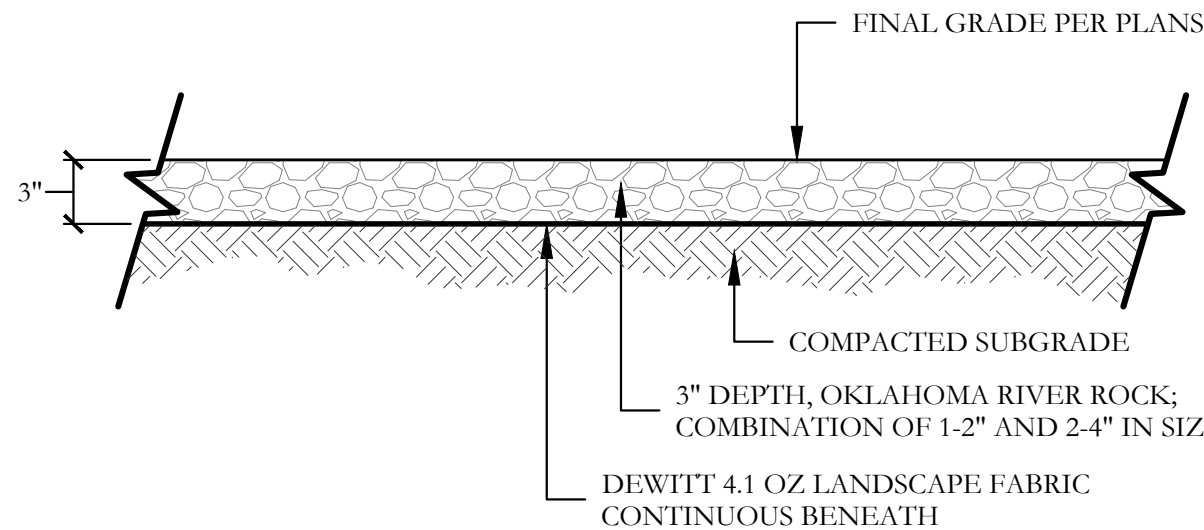
- THE OWNER SHALL BE RESPONSIBLE FOR THE ESTABLISHMENT, MAINTENANCE, AND VIGOR OF PLANT MATERIAL IN ACCORDANCE WITH THE DESIGN INTENT AND AS APPROPRIATE FOR THE SEASON OF THE YEAR.
- LANDSCAPE AND OPEN AREAS SHALL BE FREE OF TRASH, LITTER AND WEEDS.
- NO PLANT MATERIAL SHALL BE ALLOWED TO ENCR OACH ON R.O.W., SIDEWALKS OR EASEMENTS TO THE EXTENT THAT VISION OR ROUTE OF TRAVEL FOR VEHICULAR, PEDESTRIAN, OR BICYCLE TRAFFIC IS IMPEDED.
- TREE MAINTENANCE SHALL BE IN ACCORDANCE WITH THE STANDARDS OF THE INTERNATIONAL SOCIETY OF ARBORICULTURE.
- TREE STAKING MATERIALS, IF USED, SHALL BE REMOVED AFTER (1) GROWING SEASON, NO MORE THAN (1) YEAR AFTER INSTALLATION (STEEL TREE STAKES, WIRES, AND HOSES ARE PROHIBITED).

TREE PROTECTION NOTES:

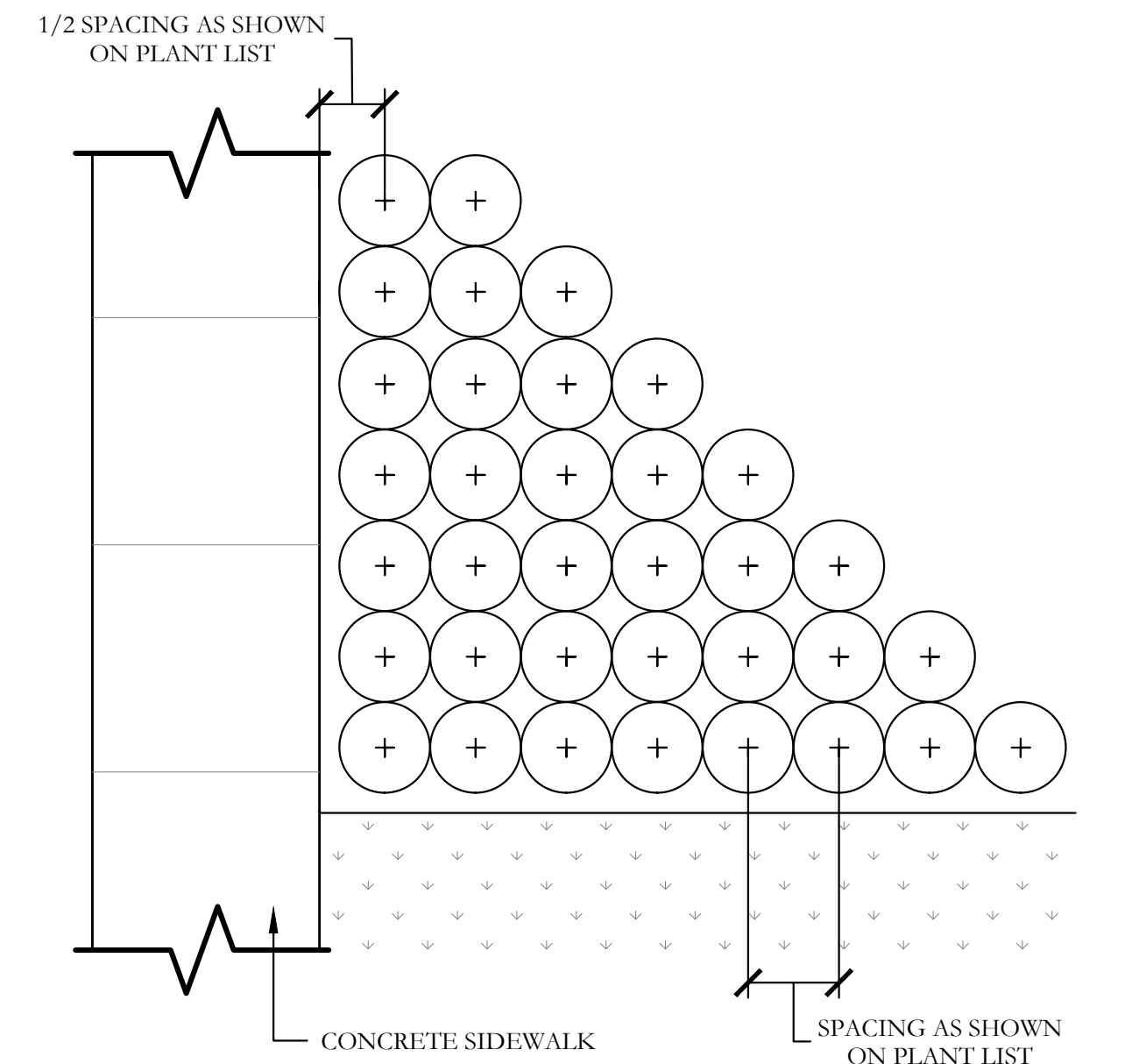
- CONTACT DEVELOPMENT SERVICES FOR A TREE REMOVAL PERMIT PRIOR TO REMOVAL OR TRANSPLANTING OF ANY TREES.
- ALL TREES WHICH ARE TO REMAIN ON SITE SHALL BE PROTECTED WITH A (4') TALL, BRIGHTLY COLORED PLASTIC FENCE, OR SILT FENCE, PLACED AT THE DRIP LINE OF THE TREES.
- PRIOR TO THE PRE-CONSTRUCTION MEETING OR OBTAINING A GRADING PERMIT, ALL TREE MARKINGS AND PROTECTIVE FENCING SHALL BE INSTALLED BY THE OWNER AND BE INSPECTED BY DEVELOPMENT SERVICES.
- NO EQUIPMENT SHALL BE CLEANED, OR HARMFUL LIQUIDS DEPOSITED WITHIN THE LIMITS OF THE ROOT ZONE OF TREES WHICH REMAIN ON SITE.
- NO SIGNS, WIRES, OR OTHER ATTACHMENTS SHALL BE ATTACHED TO ANY TREE TO REMAIN ON SITE.
- VEHICULAR AND CONSTRUCTION EQUIPMENT SHALL NOT PARK OR DRIVE WITHIN THE LIMITS OF THE DRIP LINE.
- GRADE CHANGES IN EXCESS OF 3 INCHES (CUT OR FILL) SHALL NOT BE ALLOWED WITHIN A ROOT ZONE, UNLESS ADEQUATE TREE PRESERVATION METHODS ARE APPROVED BY THE CITY.
- NO TRENCHING SHALL BE ALLOWED WITHIN THE DRIP-LINE OF A TREE, UNLESS APPROVED BY THE CITY.
- ALL REMOVED TREES SHALL BE CHIPPED AND USED FOR MULCH ON SITE OR HAULED OFF-SITE.
- ALL TREE MAINTENANCE TECHNIQUES SHALL BE IN CONFORMANCE WITH INDUSTRY IDENTIFIED STANDARDS. IMPROPER OR MALICIOUS PRUNING TECHNIQUES ARE STRICTLY PROHIBITED.



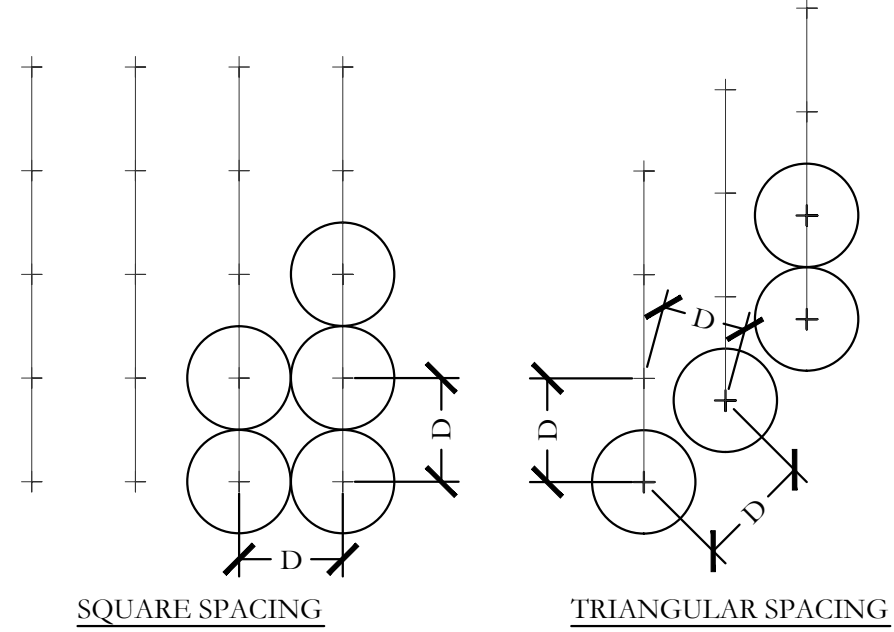
1 TYPICAL BED EDGING DETAIL SECTION NOT TO SCALE



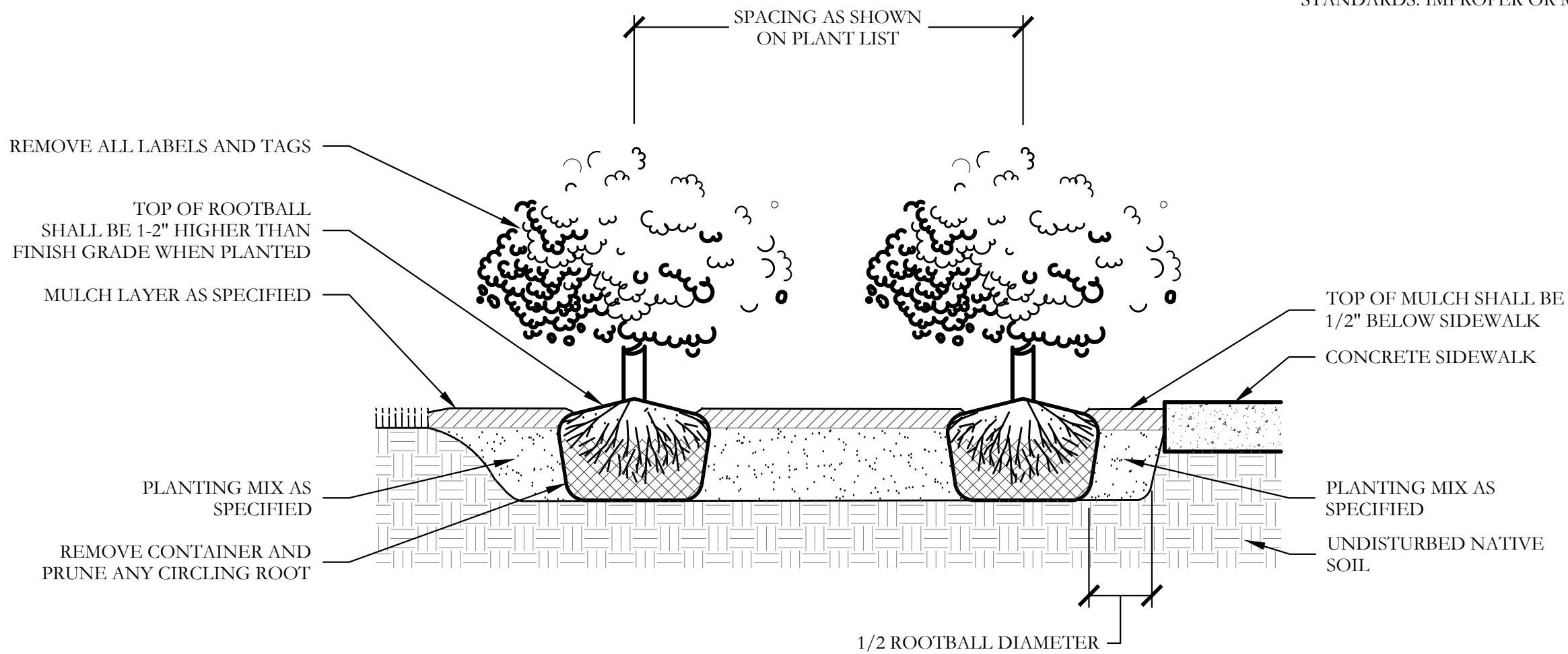
3 OKLAHOMA RIVER ROCK BED SECTION SCALE: 1" = 1'-0"

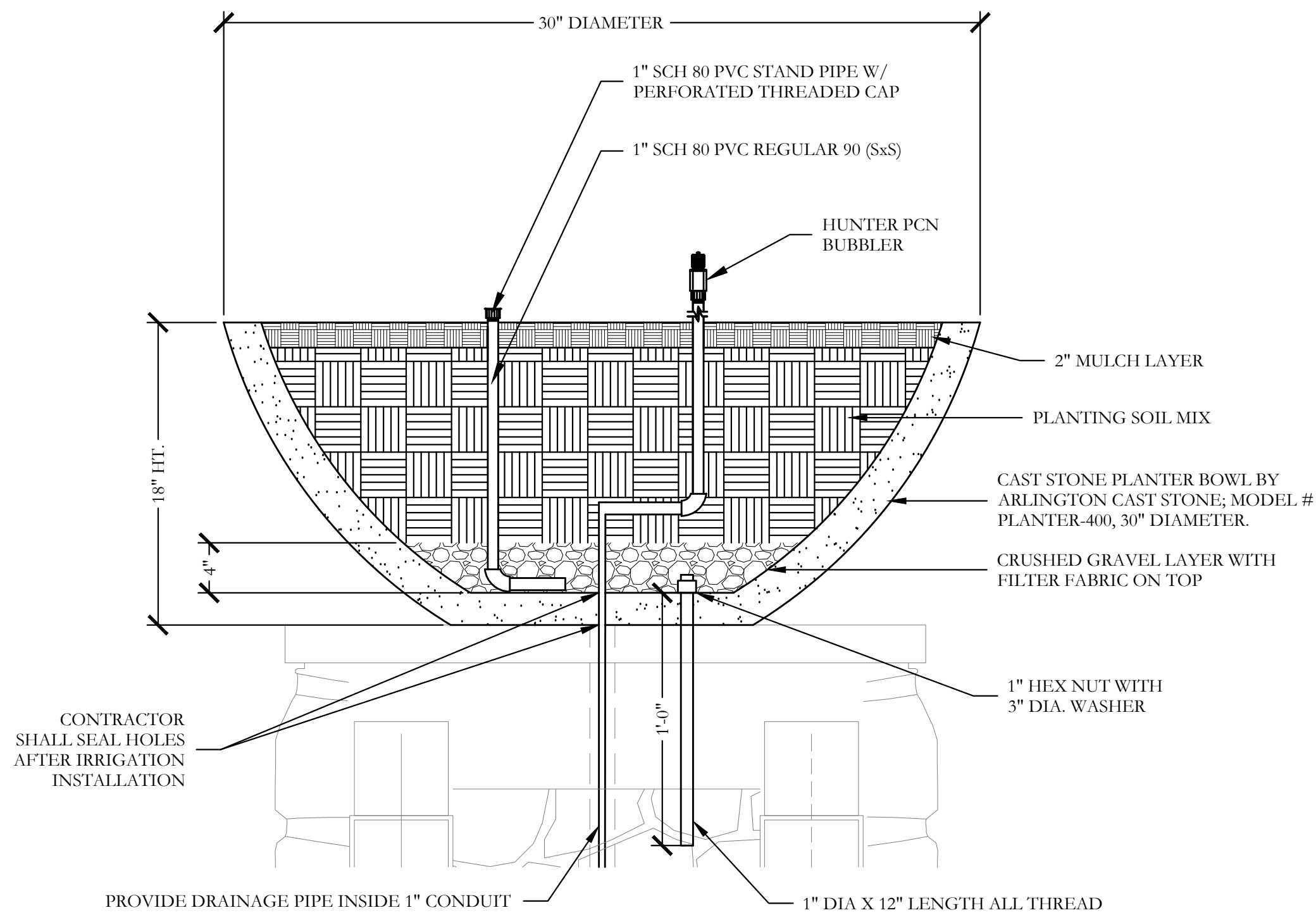


2 TYPICAL SHRUB AND GROUND COVER PLANTING PLAN/SECTION NOT TO SCALE

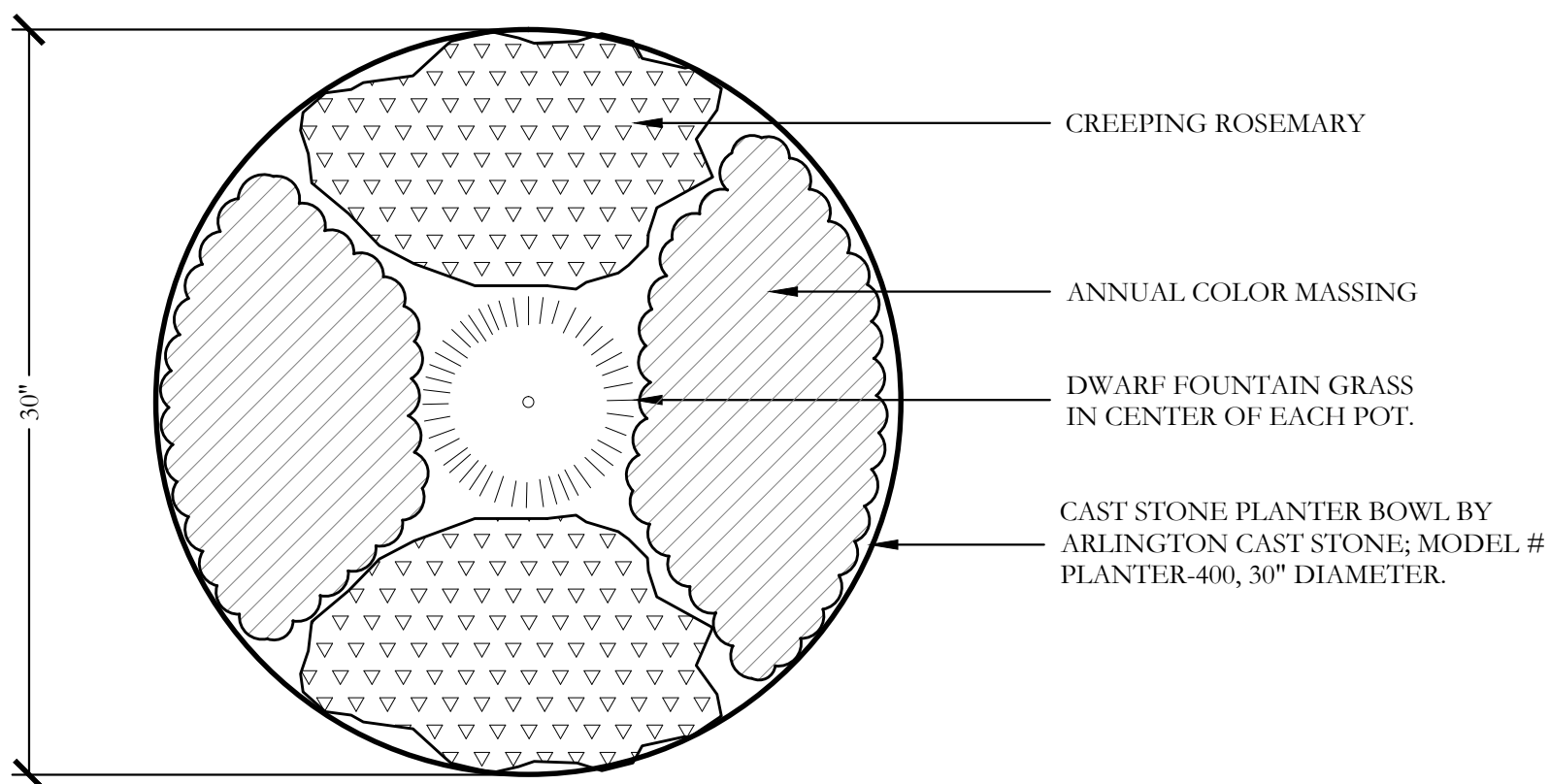


NOTE:
1. TRIANGULAR SPACING IS PREFERRED.
USE SQUARE SPACING ONLY IN SMALL RECTILINEAR AREAS.
2. "D" EQUALS THE SPACING DISTANCE AS SPECIFIED ON THE PLANT LEGEND.





1 TYPICAL LANDSCAPE POTTERY DETAIL ATOP COLUMN
SECTION NOT TO SCALE



2 LANDSCAPE POTTERY PLANTING LAYOUT
PLAN NOT TO SCALE

LANDSCAPE POTTERY PLANT LIST						
SYMBOL	ESTIMATED QUANTITY	COMMON NAME	SCIENTIFIC NAME	SIZE	SPACING	REMARKS
	2	DWARF FOUNTAIN GRASS	PENNISETUM ALOPECUROIDES 'HAAMELN'	2 GALLON	CENTER OF POT	CONTAINER GROWN; FULL PLANT.
	16	ANNUAL COLOR	TO BE SELECTED BY OWNER	4" POT	8" O.C.	CONTAINER GROWN; FULL PLANT.
	4	CREEPING ROSEMARY	ROSMARINUS OFFICINALIS 'PROSTRATUS'	1 GALLON	12" O.C.	CONTAINER GROWN; FULL PLANT.
	2	CAST STONE PLANTER BOWL BY ARLINGTON CAST STONE; MODEL # PLANTER-400, 30" DIAMETER.				