



Capital Projects Updates

Trevor Crain, PMP

Director of Capital Projects

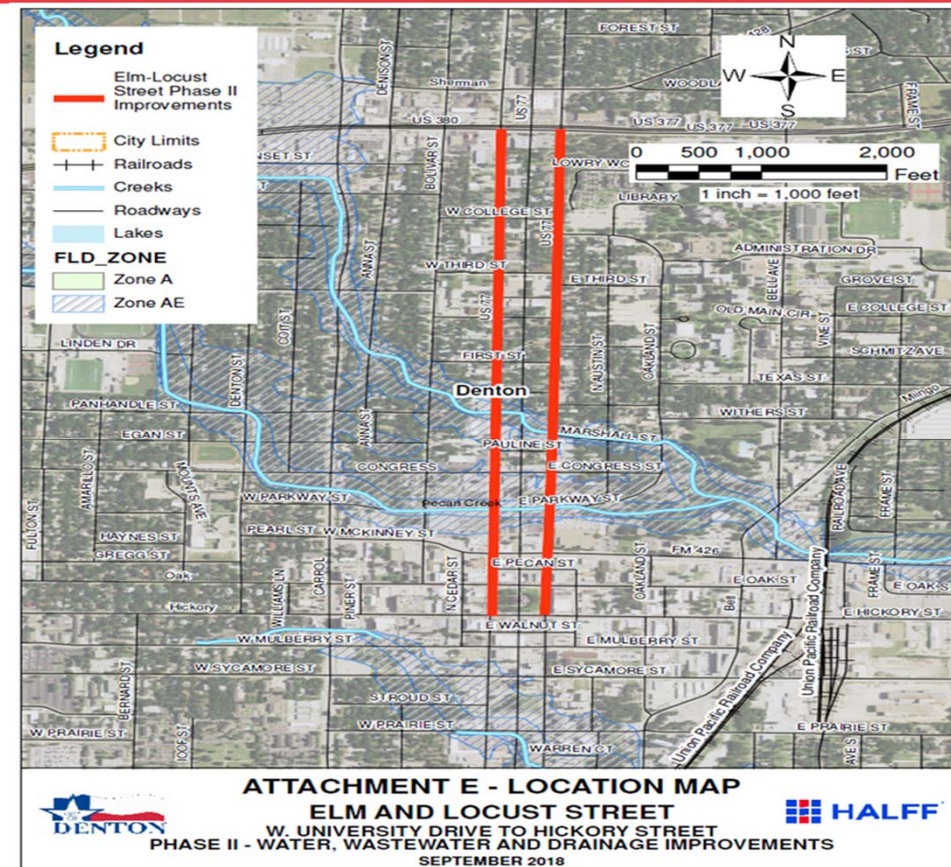
Capital Projects

05/5/24



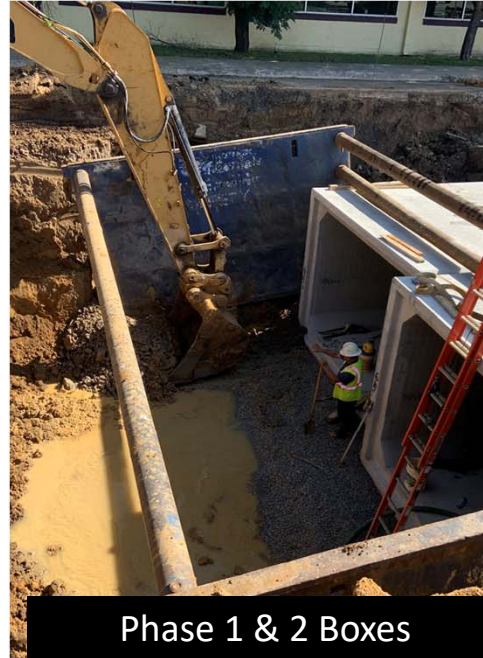
Elm / Locust

- Elm/Locust Phase 1
 - Limits are from Walnut to Eagle
 - All utilities have been completed
 - TxDOT is responsible for street reconstruction
 - Estimated Construction Start – Q2 2024
- Elm/Locust Phase 2
 - Limits are from US 380 to McKinney
 - Water, Wastewater, Drainage, and Street Reconstruction with minimal sidewalk
 - Portion of Project funding included in 2022 County TRiP Bond
 - Currently at 60% design
 - Estimated construction Start – Q4 2024



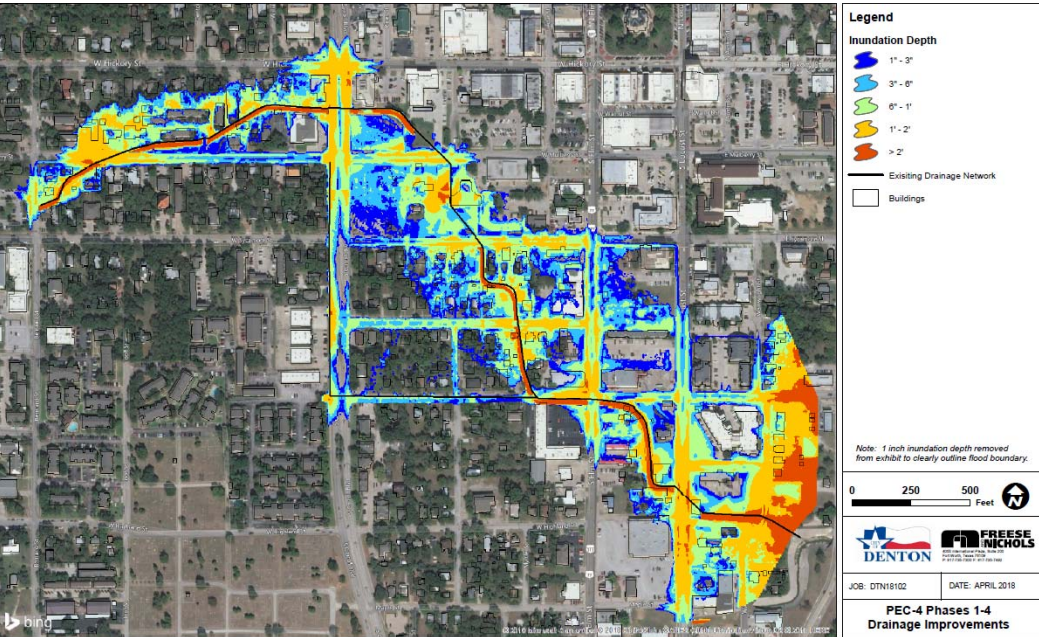
PEC 4 Phases 3 & 4

- Current Conditions
 - Originally built in the 1930's
 - Current channel is significantly undersized and in poor condition.
 - Channel currently overtops its banks leading to damage of property and significant safety issues.
 - Phases 1 & 2 have been completed in 2022 and Letter of Map Revision filed with FEMA.
 - Phase 1 & 2 removed 87 buildings out of the floodplain.

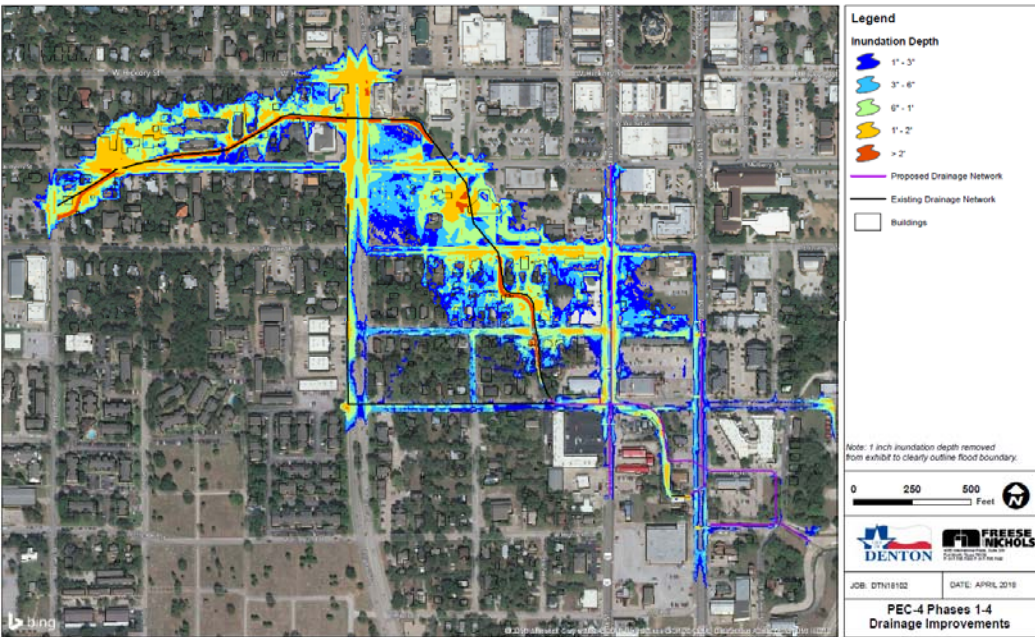


PEC 4 Phase 1 & 2

Previous Condition



Current Condition



PEC 4 Phases 3 & 4

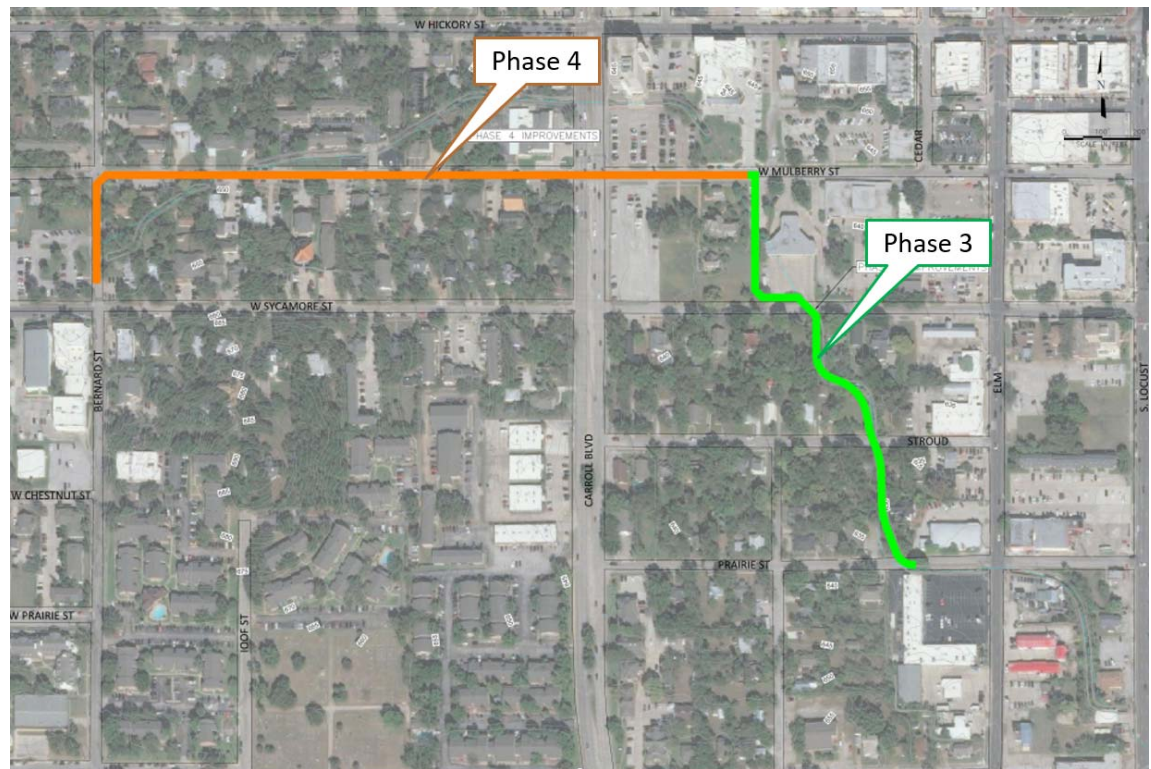
Rain event during construction of
PEC 4 Phase 1 & 2.

PEC 4 Phase 3 & 4 are upstream and
would convey same amount of water.



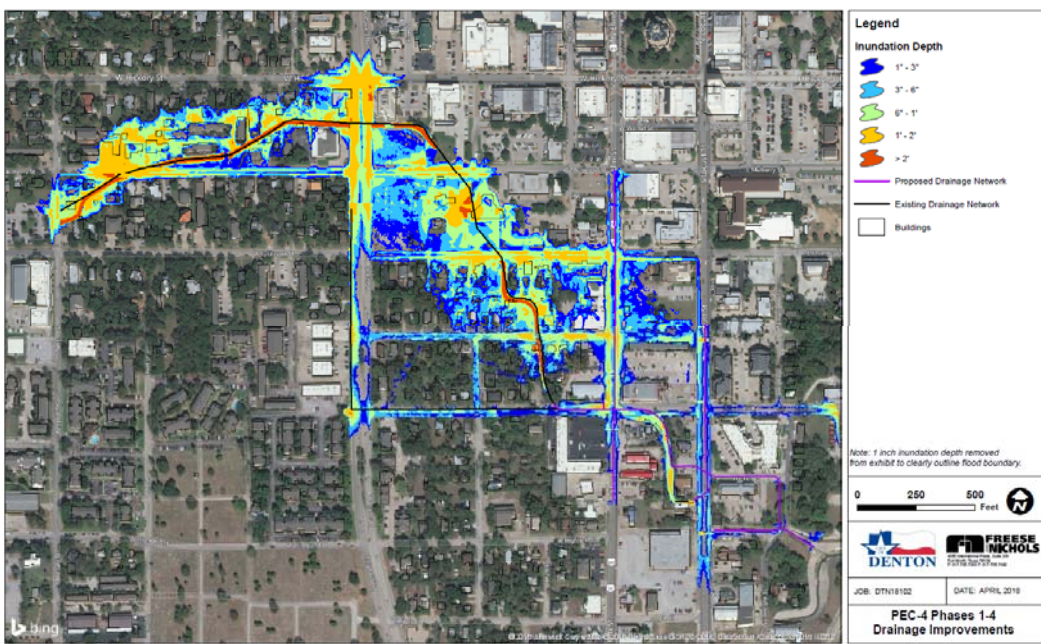
PEC 4 Phase 3 & 4

- Proposed Project
 - Installation of 16' x 8', 12' x 8', and 10' x 8' concrete boxes.
 - Relocation/replacement of existing utilities.
 - Reconstruction of roadways.
 - Completed Letter of Map Revision.
 - Buildings Removed from Floodplain: 84
 - Parcels Removed from Floodplain: 119
 - Area Removed from Floodplain: 104 Acres
 - Addresses some downtown flooding including removing the Carroll Courts building and Farmers Market out of floodplain.

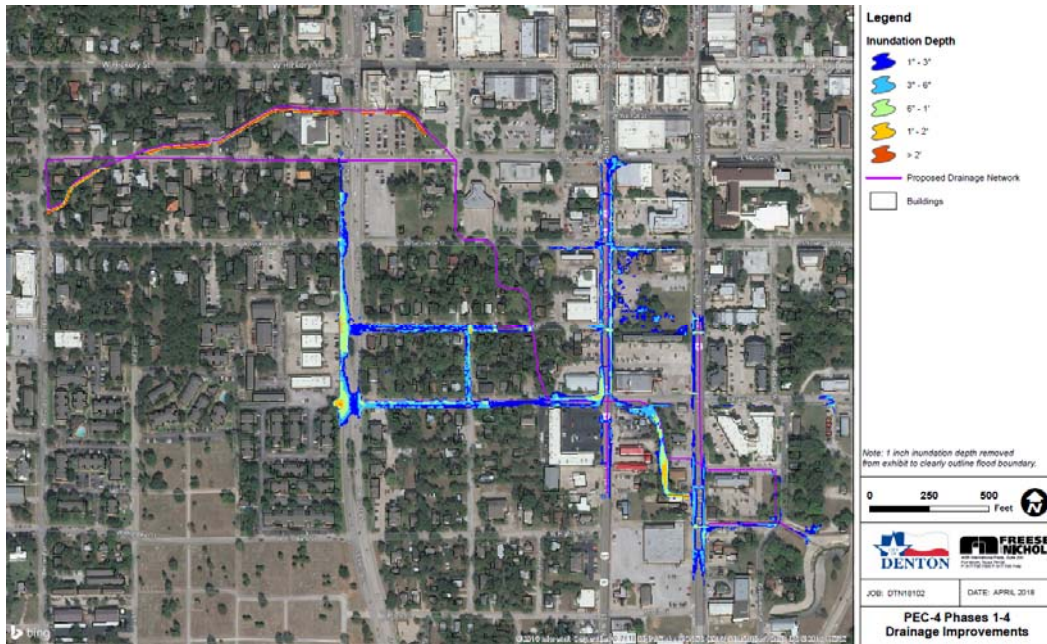


PEC 4 Phase 3 & 4

Current condition



Proposed Conditions



SYCAMORE SIDEPATH – A-TRAIN TO UNT



Original Project Scope:

Bicycle and Pedestrian Improvements on route from the A-Train Station to UNT Campus, implementing a 10-foot side-path, new traffic signal and intersection modifications at Carroll Blvd., pedestrian signal upgrades and bike radar detection as well as a bike lane along Welch Street from the existing bike lane at Eagle to Hickory Street.

Proposed Scope Changes:

Traffic Signal modifications at Elm, Locust, and Bell Street intersections including upgraded curb ramps, pedestrian push buttons, pedestrian poles, and crosswalks to comply with ADA Standards. As well as new conduits, pedestal service and new traffic signal controller foundations at both Elm and Locust Streets.
DCTA Crossing Pedestrian Improvements required for QZ Compliance.



Questions?

Trevor Crain, PMP
Director of Capital Projects
Capital Projects Department

