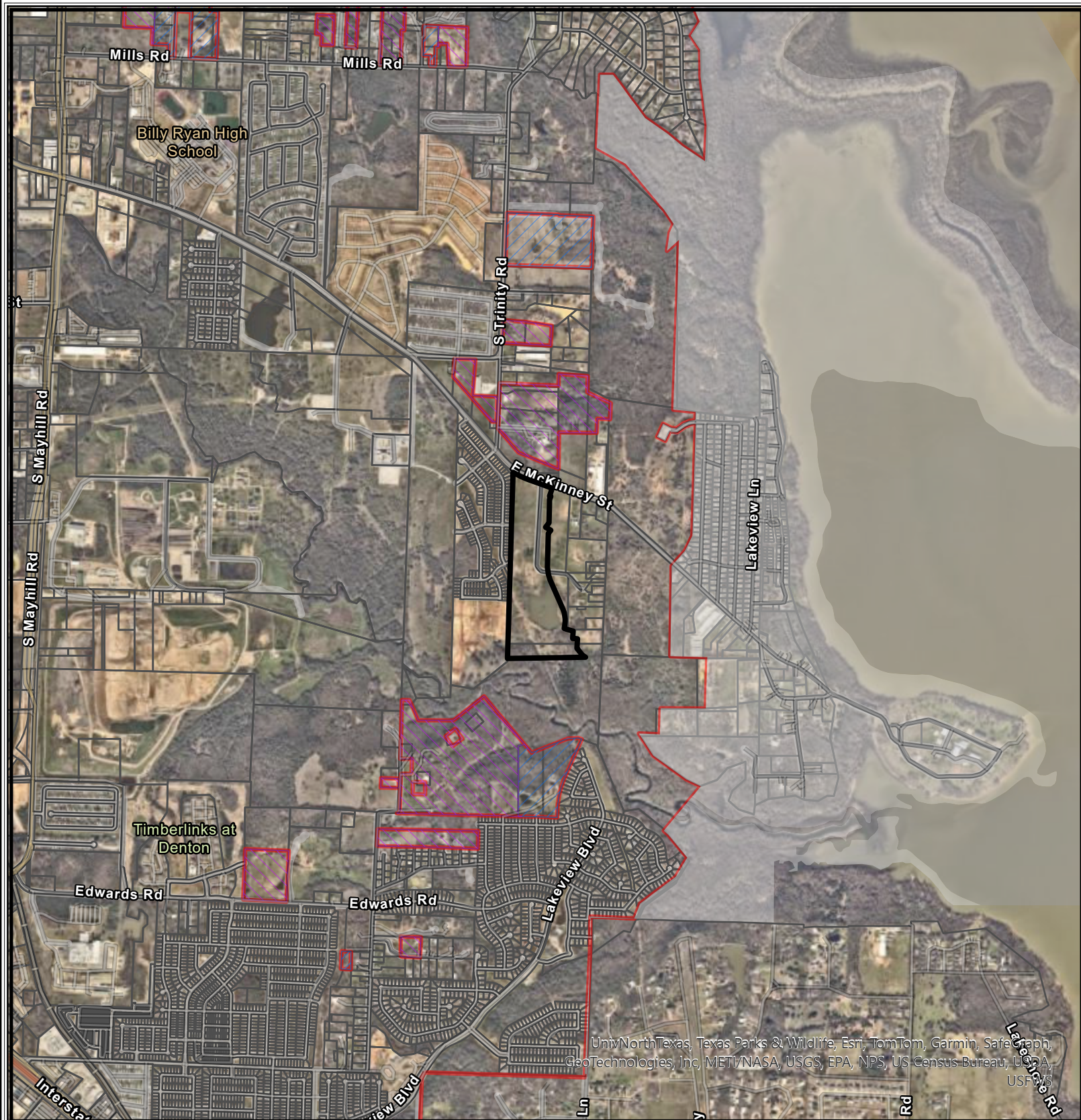
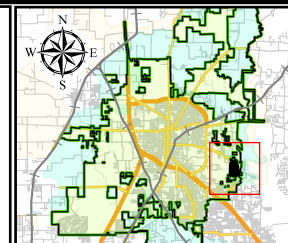


# FP24-0011 Site Location



Univ North Texas, Texas Parks & Wildlife, Esri, TomTom, Garmin, SafeGraph, GeoTechnologies, Inc, METI/NASA, USGS, EPA, NPS, US Census Bureau, USDA, USFWS

- Roads
- ▭ Parcels
- ▭ COD
- ▭ ETJ
- ▭ ETJ 2
- ▨ NAA 8/1/20
- ▨ NAA 8/1/40



0 500 1,000 2,000  
Feet

**CITY OF DENTON**  
Development Services • GIS  
Date: 4/17/2024

"This product is for informational purposes and may not have been prepared for or be suitable for legal, engineering, or surveying purposes. It does not represent an on-the-ground survey and represents only the approximate relative location of property boundaries. Although every effort was made to ensure the accuracy of this data, no such guarantee is given or implied. Utilization of this map indicates the understanding that there is no guarantee to the accuracy of this data."