



**BOND**  
**PROGRAM 2023**



# Animal Shelter

Meeting # 3

June 7, 2023

# Linda McNatt

## Animal Care and Adoption Center

22 Employees

Built in 2015 18,156 sq. ft.

### Shelter Hours of Operation to the Public

10 am -5 pm Monday-Saturday

### Shelter Operations to the Staff

6 am- 6 pm 7 days a week

### Animal Services Field Operations

24 hours 7 days a week



# Assessment – Facility Condition – Animal Shelter

## Facility Assessment

- Complete assessment of all city facilities (2022)
- Parking Lots, Curb & Gutter, Concrete Repair, Engineering Study, Mechanical, HVAC Controls / Rebalance, Interior Wall Construction, Gypsum Board/Plaster, Replace Packaged Unit, Replace Emergency & Exit Lighting, Exit Sign/Emergency Combo, Defibrillator
- Moderate investment in 5 year, however, the space is not operationally sufficient and should be considered when investing into the veterinary specific spaces.
- End of life span in 10 years. Must plan now.



Facility Condition Index	Current	3-Year	5-Year	10-Year
Animal Shelter	1.20%	3.10%	3.10%	24.60%

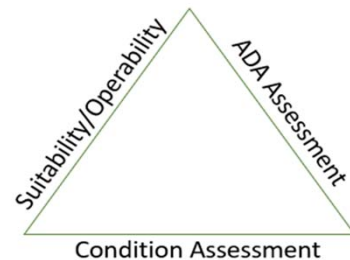
0-5%	In new or well-maintained condition.
5-10%	Subjected to wear but in serviceable and functioning condition.
10-30%	Subjected to hard or long-term wear, nearing end of useful life.
30%	Has reached the end useful or serviceable life. Renewal necessary.



# Animal Shelter

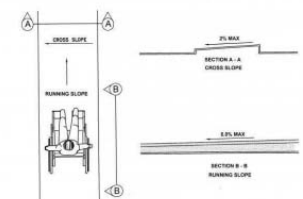
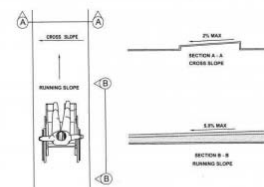
- The ADA Assessment identified 54 barriers at City Hall, of that, 2 barriers fall within the high priority category.

Item	Number of Barriers
High Priority	2
Medium Priority	34
Low Priority	18
Total Items	54



## High Priority Barriers:

<ul style="list-style-type: none"> <li>Path of Travel</li> </ul>	High Priority 4	The accessible route on the site has running slopes greater than 5 percent and has not been constructed as a ramp. Moderately out of compliance.
<ul style="list-style-type: none"> <li>Public Areas</li> </ul>	High Priority 4	The accessible path of travel has cross slopes greater than 2 percent. Moderately out of compliance.



# Linda McNatt Animal Care and Adoption Center



- **2007:** DASF Board determines replacing the old shelter was a priority
  - 30% of the funding came from DASF supporters
- **2008:** Master Plan is Adopted by City Council
  - **Goal to accommodate City needs to the year 2017 and allow for future expansion**
  - **Original plan and scope were with an anticipated 2009 opening**
- **2012:** Breaking Ground Shelter Construction begins September 12, 2012
- **2015:** Grand Opening: February 2, 2015



# FY21/22 Performance



4,745 Animal Intakes



2,939 Adoptions



651 Animals Reunified with Owner



7,182 Field Calls



43,222 Customer Calls



11,416 Animals Fed through Pet Food Pantry





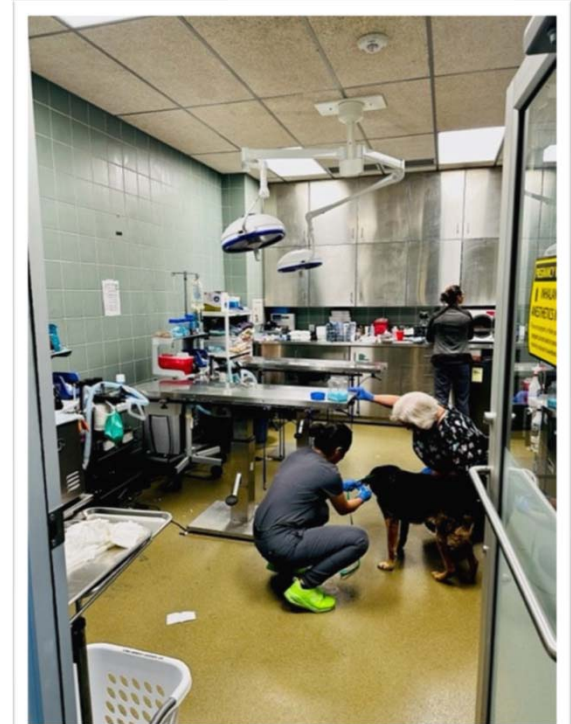
# Animal Shelter Challenges

- 2022 intake – 4,745 animals (Denton County is approximately 10-15% of the total intake)
- By 2030, animal intake is projected to increase by **38%**.
- Current Shelter Capacity **114 dogs/164 cats**
- Animal Services currently has a waitlist of **100 animals**
- Insufficient kennel space, laundry, and dish cleaning areas based on current capacity



# Animal Shelter Challenges

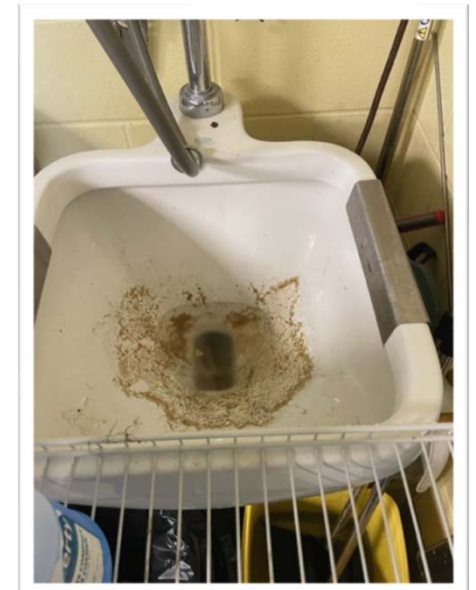
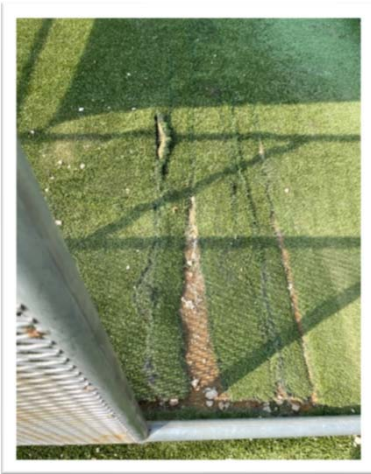
- No designated housing for small and furry animals
- The clinic is at the front of the building and should be an animal intake area





# Animal Shelter Challenges

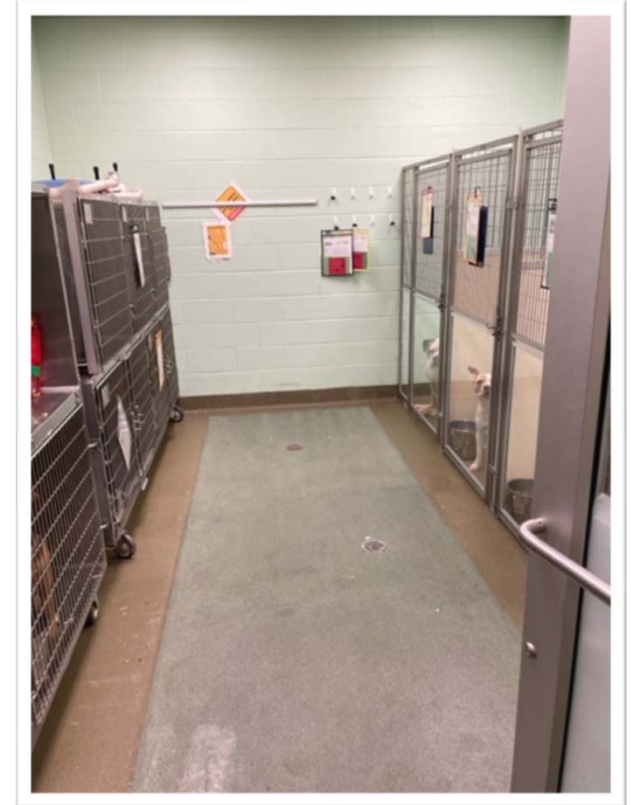
- All turfed areas need to be replaced
- Exercise kennels location not conducive to efficiency and contamination mitigation
- Fencing needs to be taller and include coyote rollers on top to prevent escape
- Flush valve toilets need to be removed



# Animal Shelter Challenges

## Inadequate HVAC System

- Needs complete replacement
- Currently allows cross contamination
- No ventilation in the cat porch
- Dog Isolation, Cat Isolation, Stray Cat, and Animal Intake rooms share the same air
- All animal housing areas should have 100% air exchange



# Animal Shelter Challenges

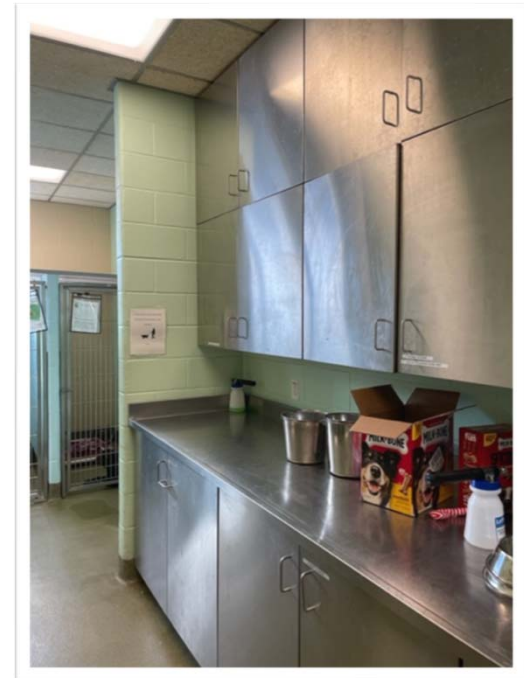
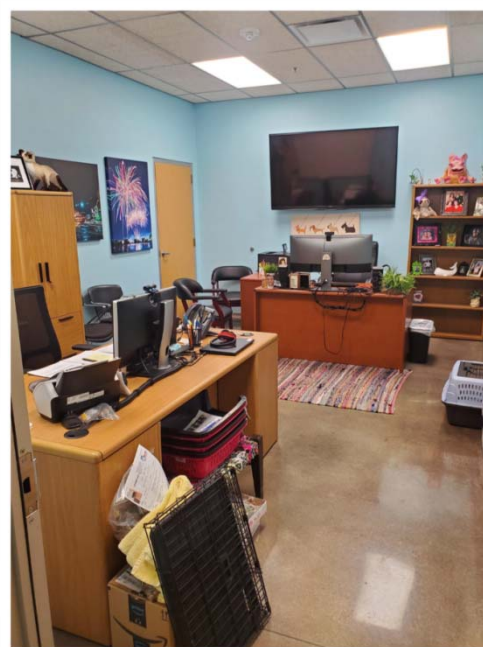
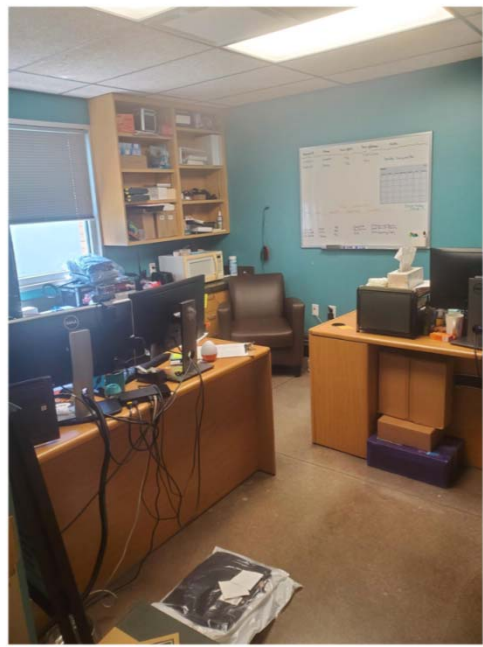
- Insufficient staff rest area
- No showers





# Animal Shelter Challenges

- Insufficient office space for staff
- Unreachable/unusable stainless-steel cabinets in several areas
- Shelter lacks adequate sound buffering



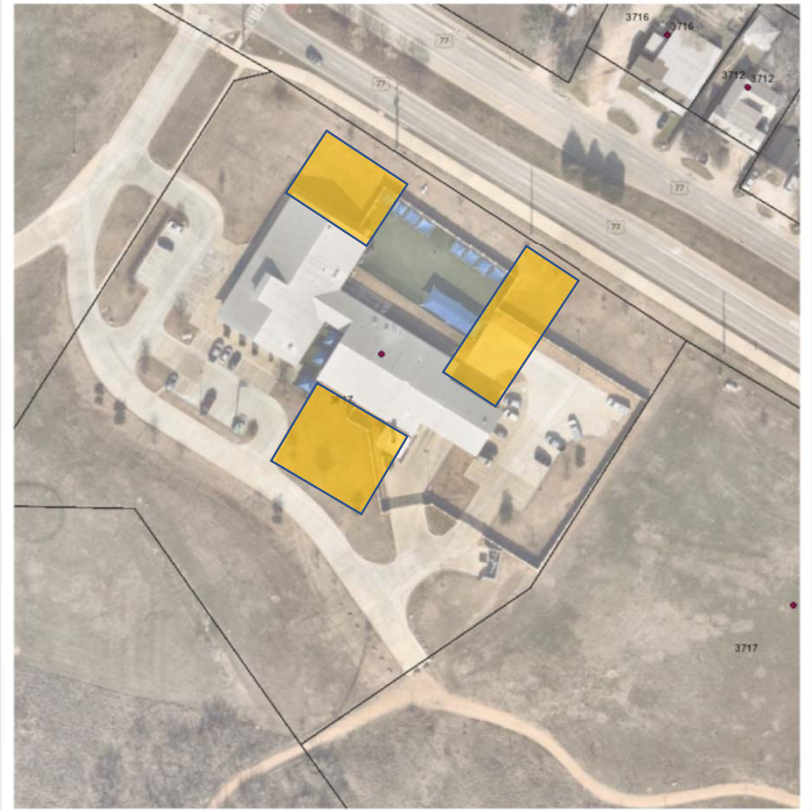
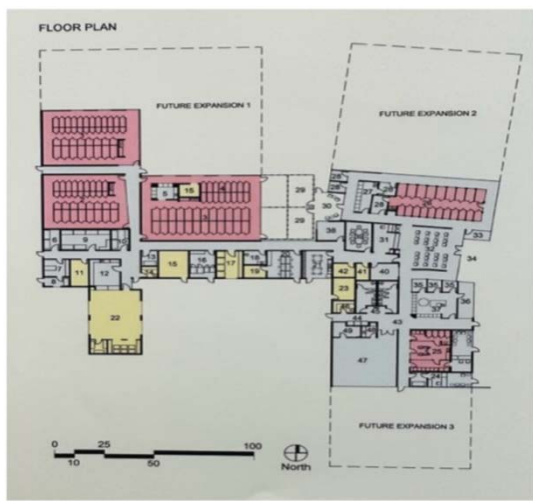


# Proposed

- Expand the Animal Shelter Facility at the existing site
- Estimated Cost of \$13.0 Million

## Major Goals:

- Increase capacity
- Reconfigure to enhance functionality
- Replace HVAC System



# Animal Shelter

**Tiffany Thomson**

[tiffany.thomson@cityofdenton.com](mailto:tiffany.thomson@cityofdenton.com)

