

# Pecan Creek Water Reclamation Plant Expansion to 26 MGD



PUB23-095 – May 22, 2023

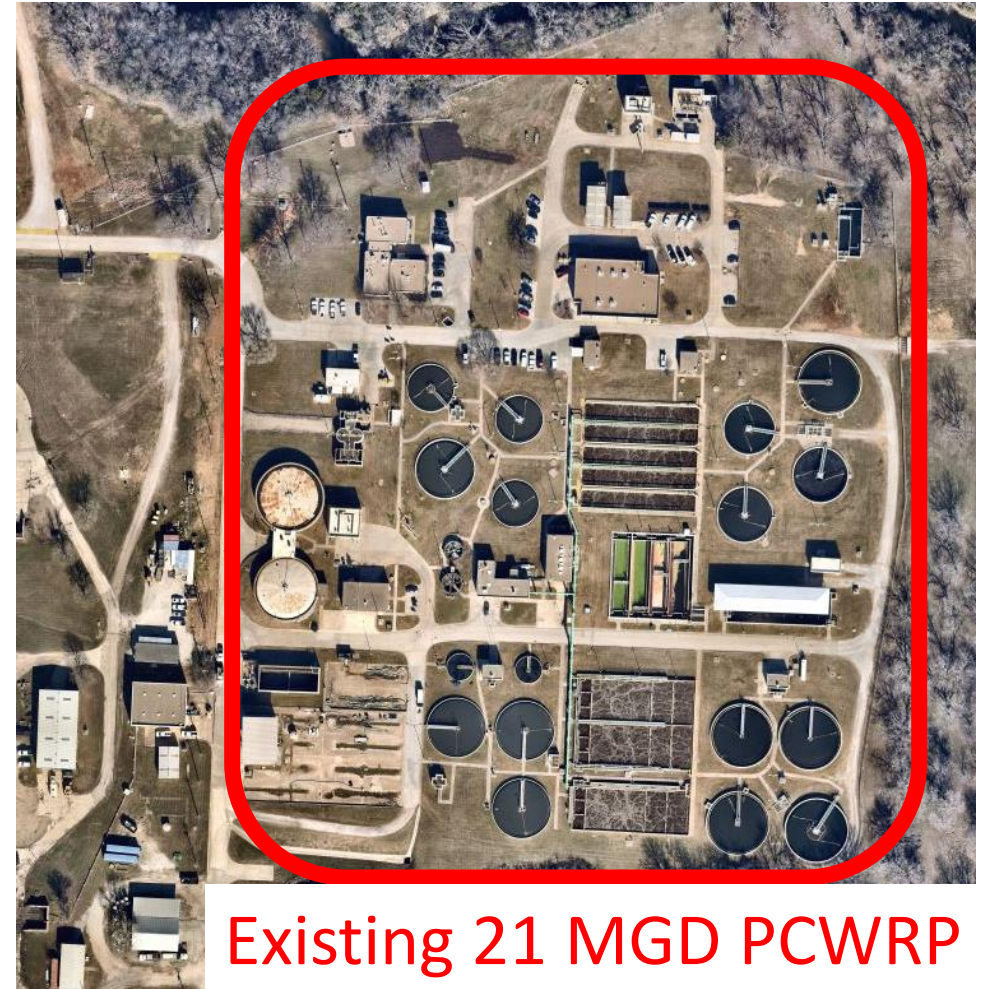


# Texas Commission on Environmental Quality (TCEQ)

- A utility **must** begin design for capacity upgrades when flows reach 75% of the permitted limit.
- When 90% of the permitted flows are reached, construction of the facility upgrades and or expansion **must** be initiated.

# Pecan Creek Water Reclamation Plant (PCWRP)

- Currently permitted for 21 MGD Annual Average Flow and 46 MGD Peak 2-Hour Flow.
- A TCEQ permit amendment for the next phases of 26 MGD and 30 MGD Permit is administratively complete as of Feb 06, 2023.
- Anticipate receiving final issuance of permit from TCEQ this summer.

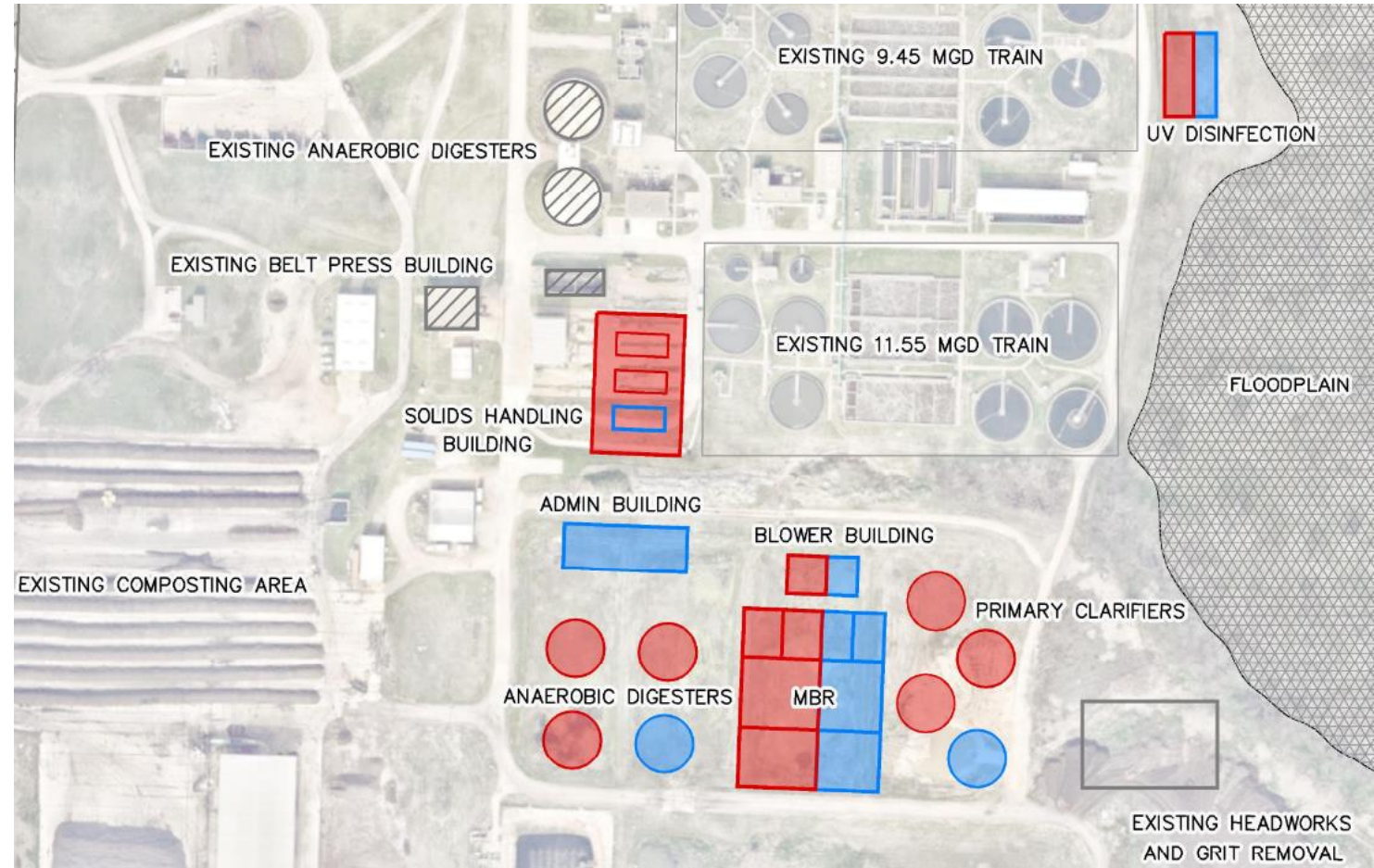


Existing 21 MGD PCWRP



# PCWRP Expansion Plan

- The Wastewater Master Plan includes a PCWRP Facility Master Plan
- The Facility Master Plan recommends a 5 MGD expansion utilizing membrane bioreactor (MBR) technology and Solids Handling Improvements including Disinfection Improvements







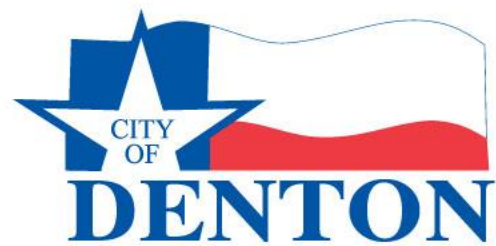
## Engineering Firm Selection

- RFQ 7574 Prequalification list utilized
- Staff recommends Kimley Horn and Associates for design
- Design Contract amount: \$14,952,000





# Questions?



PUB23-095 – May 22, 2023