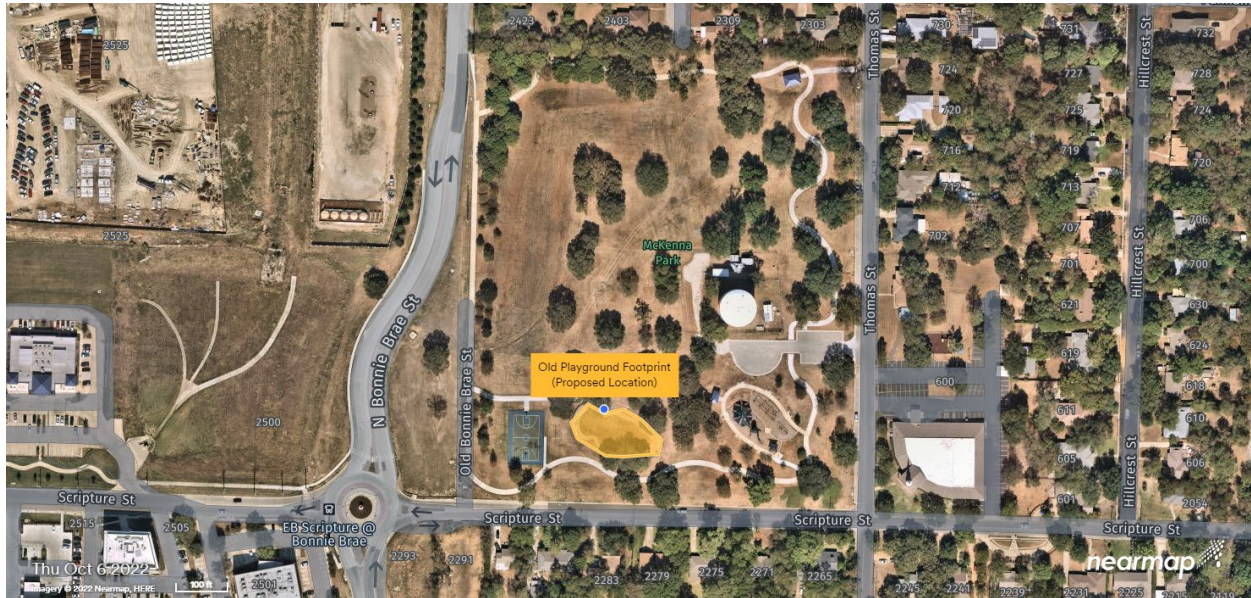


McKenna Park Equipment


Proposed Location of equipment: Old Playground footprint (Yellow Circle below)



Proposed Layout:



1 Layout
SCALE: 1/8" = 1'-0"



IDS SCULPTURE
PLAY. CLIMB. EXPLORE.

McKenna Park
Denton, TX

Age Group: 5+


SCHEMATIC DESIGN
NOT FOR CONSTRUCTION

All IDS projects are designed to meet or exceed ASTM 1487. Not all equipment may be appropriate for all children. Supervision is required. ASTM compliant safety surfacing is required under and around all play equipment. The Americans with Disabilities Act (ADA) may require your play area to be accessible, please consult with an ADA professional to ensure compliance.

Date: **11/29/22**

Drawing Title: **Layout V2**

Sheet #: **A.01.3**

 591 South Boulevard Street
Gunnison, Colorado 81230
info@idsculpture.com

(3) Performance Boulders

Pagosa Boulder

Model	PB006
Dimensions	12'-3" x 7'-9" x 10'-0"
Use Zone	24'-3" x 19'-9"
Ages	5-12, Beyond



Apex boulder

Model	PB015
Dimensions	16'-0" x 7'-9" x 10'-0"
Use Zone	28'-0" x 19'-9"
Ages	5-12, Beyond



Skyland Boulder

Model	CB023
Dimensions	7'x 4'-8" x 8'
Use Zone	19'x 16'-8"
Ages	5-12, Beyond



(2) Balance Logs

Log Traverse

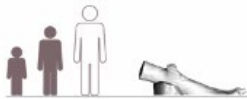
Model	AP015
Dimensions	19'-8" x 6'-2" x 3'-7"
Use Zone	31'-8" x 18'-2"
Ages	2-5, 5-12



[Download](#)

Linkin' Log

Model	AP031
Dimensions	7'-2" x 3'-0" x 2'-4"
Use Zone	19'-2" x 15'-0"
Ages	2-5, 5-12



[Download](#)

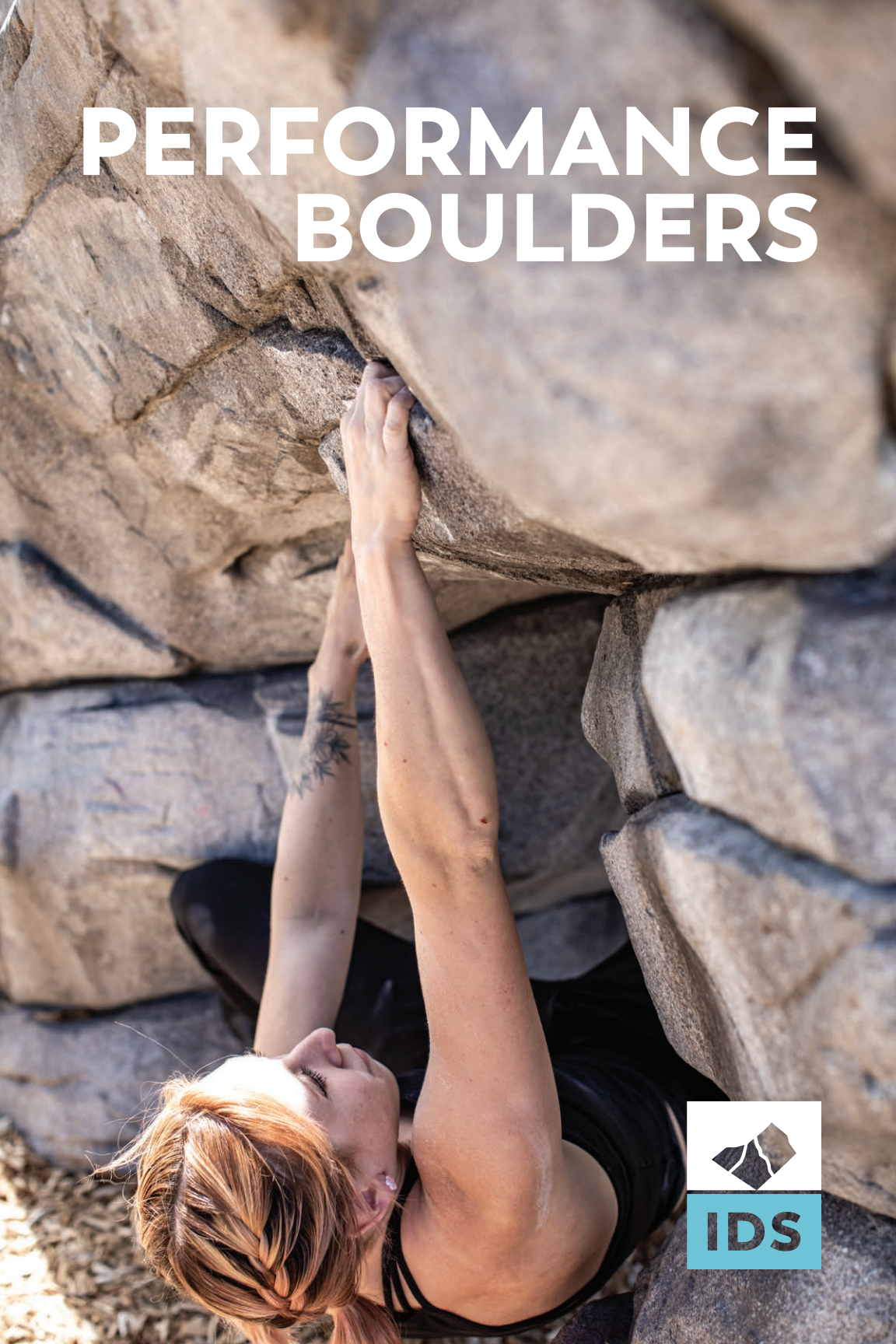
Past Project Examples







PERFORMANCE BOULDERS





IDS

why BOULDER?

Promotes physical and mental wellness

Accessible design promotes inclusivity

Outdoor recreation opportunity

Public park safety compliant – doesn't need staffing

Relieves pressure on indoor facilities

Visually iconic social hub

Graded routes and custom rock match

The impulse to play, climb and explore
does not end with childhood.



ID SCULPTURE

PLAY. CLIMB. EXPLORE.

IPEMA MEMBER
INTERNATIONAL
PLAY EQUIPMENT
MANUFACTURERS
ASSOCIATION



NIRSA

CWA
CLIMBING WALL
ASSOCIATION

970.641.1747 | idsculpture.com



Operations and Maintenance Instructions

The following operations and maintenance instructions apply to all GFRC concrete features installed by Integrated Design Solutions, LLC.

Manufacturers Point of Contact:

Integrated Design Solutions, LLC DBA ID Sculpture
info@idsculpture.com
(970) 641 1747

Annual Inspections:

An inspection should be conducted annually that includes:

1. A detailed examination of all concrete surfaces. Hairline cracks will typically manifest throughout the concrete shell, particularly concentrated at stress points. This fine cracking is a normal effect of the curing and weathering process and does not represent a manufacturing flaw, nor do they compromise the structural integrity of the concrete shell in any way. If new cracks develop that are larger than 1/8" in width over a span greater than three inches, please contact IDS.
2. During the inspection, nooks and crannies throughout the contour of the concrete surface should be checked for debris.
3. In areas where engineered wood fiber is the primary landing surface, the depth should be checked to insure a minimum depth of 12 inches.
4. Check to insure that all manufacturer identification plaques and warning/caution signs are intact and secure.
5. Inspect all rope components for fraying, signs of fraying or chafe. Check the tightness of threaded connections at rope end fittings. Loctite has been applied to all threaded connections, should a threaded connection become loose, application of Loctite or similar is recommended.

Modular Handholds

Some IDS sculptures have modular handholds. Please refer to "Course Setting 101" for instructions on removing and repositioning handholds. On new sculptures, handholds may loosen due to expansion and contraction and "settling" of the hold on the sculpture. Handholds should be inspected on a weekly basis and tightened as necessary. Handholds



should remain tight after 3-4 weeks of weekly inspection and tightening. In the unlikely event that your handholds continue to loosen after 4 inspections, please contact IDS.

Annual Cleaning

IDS sculptures may be cleaned on an as needed basis. The concrete shell can be effectively cleaned with a pressure washer. When using a pressure washer, do not exceed 1800psi and take care to keep the tip at least 6" from the surface of the sculpture. In lieu of a pressure washer, smaller areas of the simulated rock surface can be washed by hand using a spray bottle, nylon brush and rag. This method is particularly effective in removing isolated areas of chalk, grime and marks left by the rubber soles of shoes.

GFRC - Cleaning Methods

1. For smaller surface areas, a scrub brush and light cleaning detergent mixed with water is the best approach. A ZEP exterior siding cleaner can be heavily diluted and scrubbed on and off with the brush.
2. For larger areas, you can use a pressure washer. The pressure washer should be no greater than an 1800 PSI washer. Use a 25 to 40-degree wide nozzle to prevent surface damage of the topical paints on the theme finishes. Hold the nozzle a minimum of 6" away from the surface. Clean a small, hidden test area before starting the project to ensure the pressure washer will not damage the surface. Pressure washers generate very high pressure, so it's essential to take safety precautions and follow all the manufactures instructions when using them:
 - Use both hands when holding the spray nozzle.
 - Don't use pressure washers while standing on a ladder.
 - Wear protective eyewear at all times.
 - Never point the nozzle at anyone.
3. An alternative to using a pressure washer is to use a *home-washing kit* that attaches to the garden hose. The kits aren't as quick or as effective as pressure washers but are easier to use and are available at most local hardware stores.

GFRC - Cleaning

1. Cover or remove anything you don't want wet or washed from the area that is to be cleaned.
2. Check the theme finishes for trouble spots that are covered in mildew, mold or moss. To determine whether a trouble area is affected by mildew, apply a small amount of diluted household bleach to the area. If it clears up, the problem is mildew. Pressure washers usually don't remove mildew, so you'll need to clean those areas by hand. Scrub off the mildew using a solution of 9 parts water and 1 part bleach.



3. If using a power washer with a soap feed, you may use a mild solution of water and detergent, or you may also use a ZEP cleaner or alternative that is specifically for power washers, following the instructions for that specific cleaner.
4. If there is indication of efflorescence (white streaks and or spots) on the GFRc surface, this can be cleaned with a 10% muriatic acid solution. Take care to rinse area immediately after using muriatic acid to avoid discoloration
5. Remember, always perform cleaning on test area and inspect for damage before proceeding.
6. Begin spraying the surface, holding the nozzle at a 45-degree angle. Work from the bottom up, and move across the surface from side to side at a steady pace, maintaining the 6" to 2' distance between the surface and the nozzle head.
7. Rinse with clean water from the top down to prevent streaks.

Graffiti Protection and Cleaning

All concrete surfaces have been treated with a surface applied prophylactic to reduce the damage caused by, and ease the removal of graffiti. All chemical applications have been approved safe for public domain applications. IDS uses Blokguard S by Prosoco (www.prosoco.com). Please refer to manufacturers specifications for graffiti removal.

Paint Repair

IDS maintains a record of the combination of stains and paints that comprise the custom color pallet for each installation. In the event that a paint repair is desired or required, please contact IDS for either a paint-repair kit (cost dependent upon number of colors required) or a list of specific stains that can be used to repair the area independently. All stains used by IDS are playground safe Behr Siliconized Acrylic Solid Color Concrete stains that can be procured at Home Depot retail locations.

When contacting IDS with a request for a paint-repair kit or color pallet, please be sure to provide an image of the area in question.



Climbing Sculpture Product Warranty

Limited Warranty

The company warrants their Sculptures, Playground Sculptures and Climbing Walls against failure or defect, under normal usage conditions, for ten(10) years from delivery acceptance, excluding normal wear and tear. Normal wear and tear includes slight polishing of hand and footholds, slight fading of the color, and hairline cracking of the concrete shell at stress points (larger than 1/8" in width over a span greater than three inches). The company shall be notified of such failure or defect and shall repair or replace the damaged portion of the Structure within 30 working days of notification at the company's sole expense.

The warranty period for ropes, nets and associated hardware is three (3) years from delivery acceptance.

Limitation of Remedies

The Company acknowledges that the remedies under this Limited Warranty shall be the repair or replacement of the Products or any components thereof which are determined by the Company to be defective in material or workmanship or, at the sole option of the Company, the refund of the purchase price of the Products in question. The Company shall not be liable for injury to property other than the Products themselves.

Products Covered by This Warranty

This Limited Warranty shall extend to the Products and components thereof manufactured, supplied or repaired by the Company, but shall not extend to products, parts or equipment supplied by other manufacturers and installed by the Company.

Automatic Termination of Warranty Obligations

Any obligation of the Company under this Limited Warranty shall automatically and immediately terminate, without notice from or any further action by the Company and the Company shall have no responsibility for damages of any kind as a result of the occurrence of any of the following:

- i. Accident, misuse, abuse or negligent use of the Products or any component thereof;



- ii. Any repair or alteration of the Products or any component thereof made outside the Company's facility, except by an employee of the Company authorized to do so;
- iii. Improper installation or operation (including both mechanical and electrical) of the Products or any component thereof;
- iv. Failure to provide normal maintenance for the Products or any component thereof.

Limitation on Damages (Consequential Damages Excluded)

The Company shall not be responsible for, nor does this Limited Warranty extend to, any consequential or incidental damages or expenses of any kind or nature, regardless of the cause thereof or any knowledge which the Company may have regarding the probability of the occurrence of such damages or expenses including, without limitation, injury to persons or property, loss of use of the Products, lost goodwill, lost resale profits, work stoppage, impairment of other goods, breach of contract, negligence or such other actions as may be deemed or alleged to be the cause of a loss or damage to the Owner, its agents, sub-distributors, customers or any other persons.

Enforcement of Limited Warranty

Owner will immediately notify the Company in writing of any Product or component thereof to be repaired or replaced. Owner's written notice shall specify the Product or component thereof as well as list the facts or reasons supporting or underlying owners claim for relief under this Limited Warranty. Allegedly defective Products or components thereof shall be made available to the Company for repair or replacement. In the event that the Company elects to repair or replace the allegedly defective Product or component thereof, the Company shall ship and or travel, at the Company's expense, said replacement or repaired Product or component to owner via the lowest priced transportation available to the Company.

Disclaimers from Warranty

THIS LIMITED WARRANTY IS GIVEN IN LIEU OF ALL OTHER WARRANTIES, WHETHER EXPRESS OR IMPLIED. THERE ARE NO WARRANTIES THAT EXTEND BEYOND THE FACE OF THIS LIMITED WARRANTY.

For any questions or claims please contact:

Integrated Design Solutions, LLC

591 South Boulevard

Gunnison CO 81230

P: 970 641 1747

F: 970 641 1036

info@IDSculpture.com



Materials and Methods

ID Sculpture designs and manufactures sculptural concrete for playgrounds and public art projects. Born in the Colorado Rockies, we've seen our sculptures weather snow, ice, and the intense sun found at high elevations. We stand behind their durability and the innovative materials and methods we use to create them.

Composition

ID Sculpture uses high performance composite technology to construct our products. It makes them rich in textural detail, lightweight yet durable, and architecturally accurate so you can plan your project down to the smallest detail. We can even design our products to interface with existing site features, like retaining walls or landscape features.

Our typical structures use a digitally fabricated GeoFoam armature reinforced with steel and then encapsulated with a specially formulated shell of glass fiber reinforced concrete (GFRC).

Glass Fiber Reinforced Concrete (GFRC), is a cementitious, composite material widely used in a variety of exterior architectural and structural applications. ID Sculpture's proprietary concrete mix is specifically designed for durability and sculptural detail.

Color is created with integral concrete pigments and playground safe, siliconized acrylic stain. Finishes are hand-applied and can be customized to designer's specifications. All ID Sculpture products are prefinished with a protective anti-graffiti sealant.

Safety

As professionals, parents, and climbers in the playground and climbing wall industries, we take safety seriously. All of our playground features conform to ASTM F1487 "Standard Consumer Safety Performance Specification for Playground Equipment for Public Use". Certified Playground Safety Inspectors (CPSI) review every new product and custom project during both design and fabrication to ensure that products are safe and compliant. During design, our 3D modeling and visualization technology allows us to analyze components with virtual probes and carefully plan layouts before ever building them.

During fabrication, CPSI's inspect sculptures with typical ASTM testing devices and review for adherence to the project and ASTM specifications.



ID Sculpture is a participant in the International Play Equipment Manufacturers Association (IPEMA) Playground Equipment Certification Program and has been inspected and qualified to perform self-certification of ID Sculpture products. To verify program enrollment status and a complete list of currently certified equipment, please visit www.IPEMA.org.

But our commitment to safety goes beyond regulations. We draw on our experiences as outdoor people to understand the risks inherent in outdoor play and climbing and mitigate them through hazard analysis, carefully sculpts climbing routes and attention to intended users, to create play value that is both challenging and safe.

ID Sculpture is a member of the:

[Climbing Wall Association \(CWA\)](#)

[National Recreation and Park Association](#)

[International Play Equipment Manufacturers Association \(IPEMA\)](#)

Durability

Our proprietary concrete was developed after years of experience building for the harshest of climates—our home in the Colorado Rocky Mountains.

ID Sculpture structural foam is flame and water resistant, and conforms to ASTM Tests D1621, C203, C1623, and C732 for strength properties, C355 and C272 for moisture resistance, and will not support mold growth.

All ID Sculpture products are warrantied 10 years and extended maintenance contracts are available at an additional cost. We believe the life expectancy of an ID Sculpture product to range from 30-50 years.

When damage does occur, ID Sculpture products are remarkably easy to repair due to our proprietary materials and methods.

Installation

Your project will be designed and fabricated with installation in mind. We understand the realities of construction sites and have learned how to properly execute even the most demanding of installations. Whether your site is a clean retail space or a public plaza, ID Sculpture has the experience to do it right every time.

If you prefer, you can install ID Sculpture catalog items yourself. Most of our freestanding projects require a simple slab on grade or piers. Your piece will come with mechanical connection points and hardware. We will also provide an easy to understand installation guide and an Operations and Maintenance manual.



Environmental statement

ID Sculpture was born out of a love for adventure and the natural world. We're committed to making sure that our products last for future generations to enjoy, and minimize waste and environmental impact wherever possible.

- Durability is at the core of our environmental commitment. IDS sculptures are built to last; we make sure our features will be available to successive generations to enjoy. The expected lifespan of IDS play features is 50yrs and are warrantied for 10 years.
- With proper disassembly and segregation of materials, IDS play features are 100% recyclable.
- IDS structural foam contains a minimum of ten percent recycled materials.
- To manage production waste, IDS developed a proprietary foam recycling system, allowing IDS to recycle over 90% of its production waste.
- IDS sculptures are lighter than competitors, with comparatively lower shipping weights.
- IDS's proprietary process, uses less Portland cement than its competitors, thereby reducing the consumption of this energy intensive product.
- All IDS sculptures meet the Consumer Product Safety Commission (CPSC) guidelines for lead and phthalate content based on independent laboratory testing of completed material assemblies.
- Finally, IDS proudly designs and manufactures all of its products in the United States, from our home in Gunnison, Colorado.