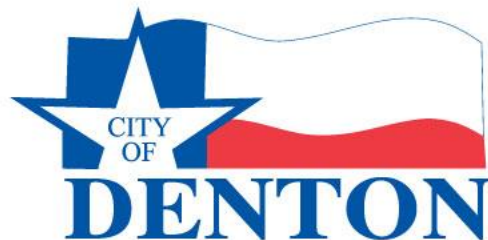


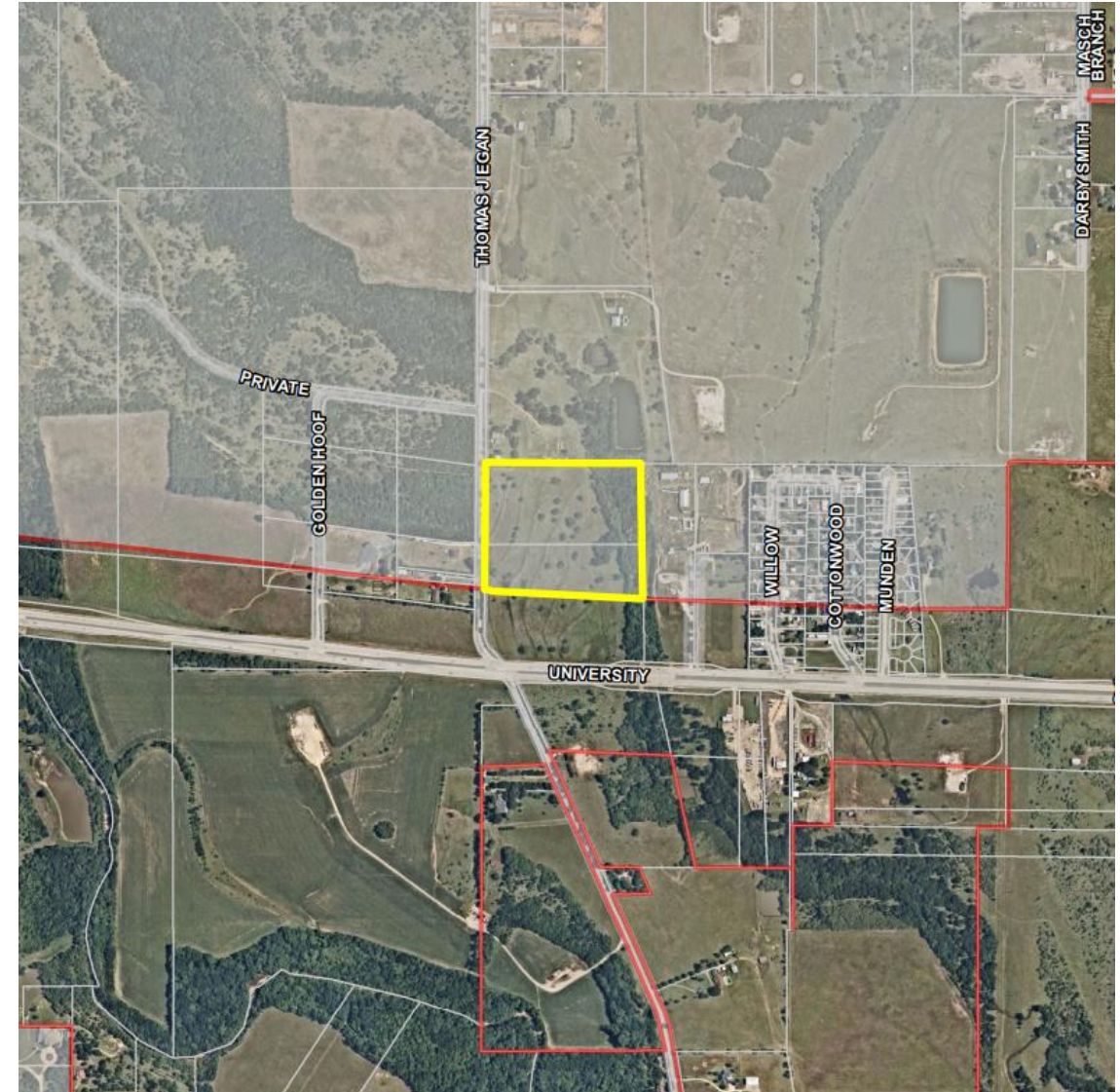
A22-0001a 380 and Thomas J Egan – Public Hearing

Ron Menguita
Principal Planner
November 15, 2022

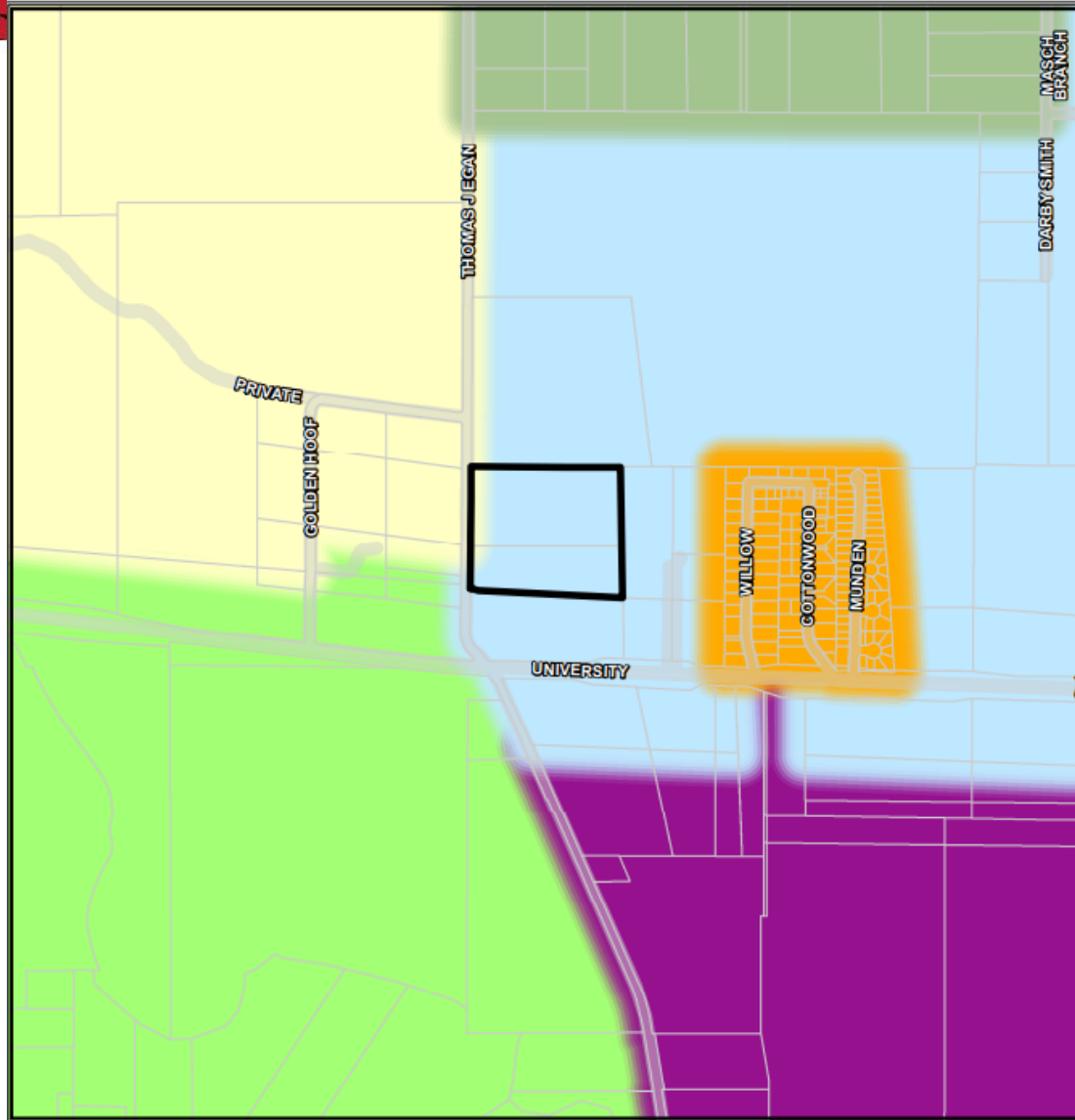


Request

- Hold a **public hearing** and consider a petition for voluntary annexation of approximately 18.60 acres of land
- Approximately 500 feet north of US 380 (University Drive) and east of Thomas J Egan Road

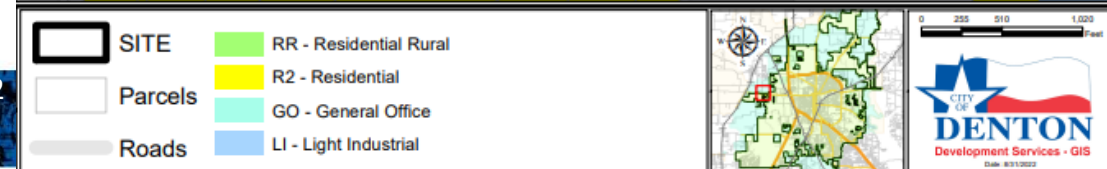
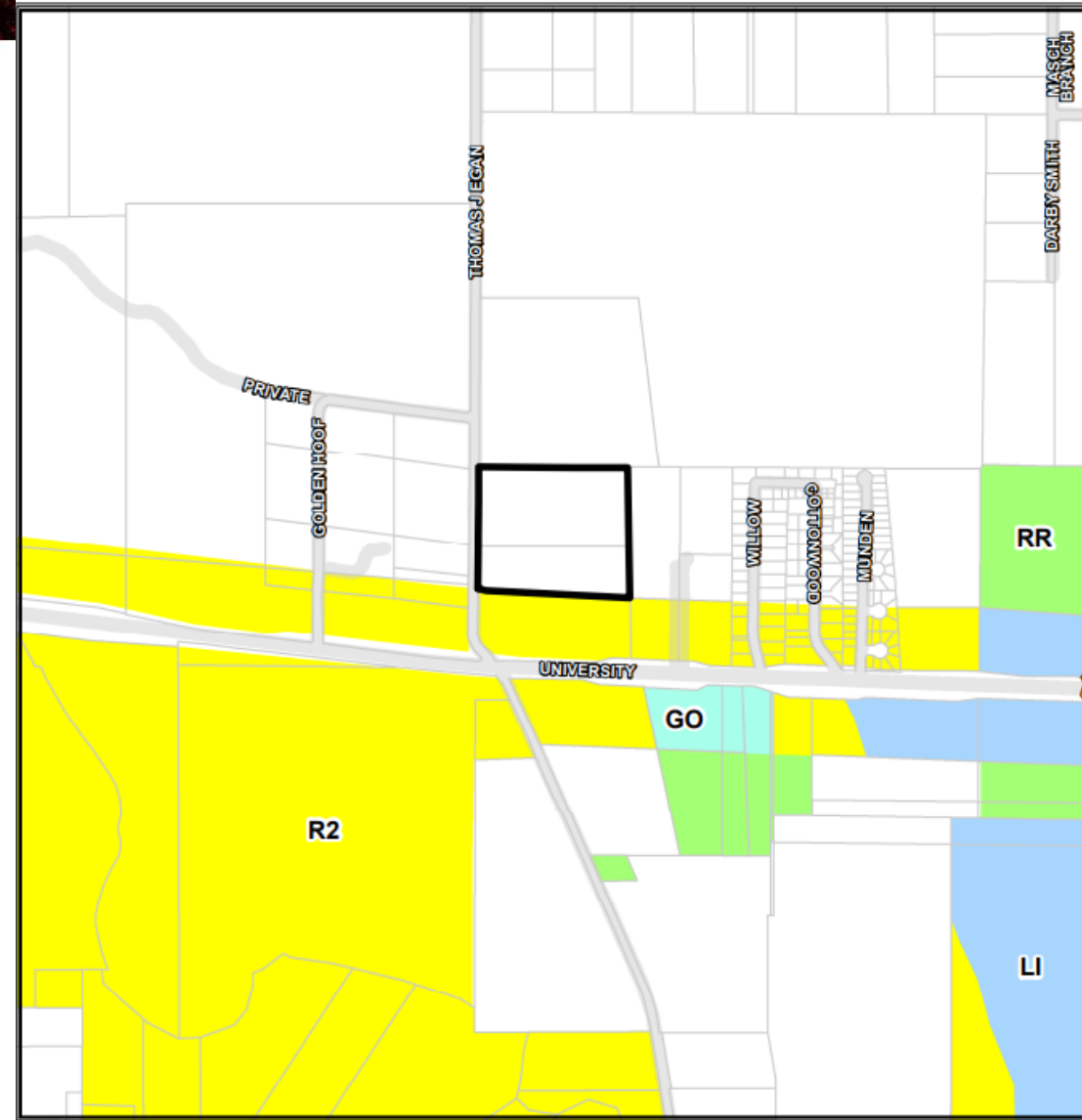


A22-0001
Future Land Use Map



This product is for informational purposes and may not have been prepared by or be suitable for legal, engineering, or surveying purposes. It does not represent an on-the-ground survey and represents only the approximate relative location of property boundaries. Although every effort was made to ensure the accuracy of this data, no such guarantee is given or implied. Utilization of this map indicates the understanding that there is no guarantee to the accuracy of this data.

A22-0001
Current Zoning Map



This product is for informational purposes and may not have been prepared by or be suitable for legal, engineering, or surveying purposes. It does not represent an on-the-ground survey and represents only the approximate relative location of property boundaries. Although every effort was made to ensure the accuracy of this data, no such guarantee is given or implied. Utilization of this map indicates the understanding that there is no guarantee to the accuracy of this data.

11/15/2022
A22-0001a

QUESTIONS?

Ron Menguita
Principal Planner
Development Services