

# DEVELOPMENT SERVICES - Real Estate

Easement Acquisitions for:

IH-35N to U.S. Highway 380  
(University Drive) to U.S. Highway  
77 to Milam Road, TXDOT Utility  
Relocation Project



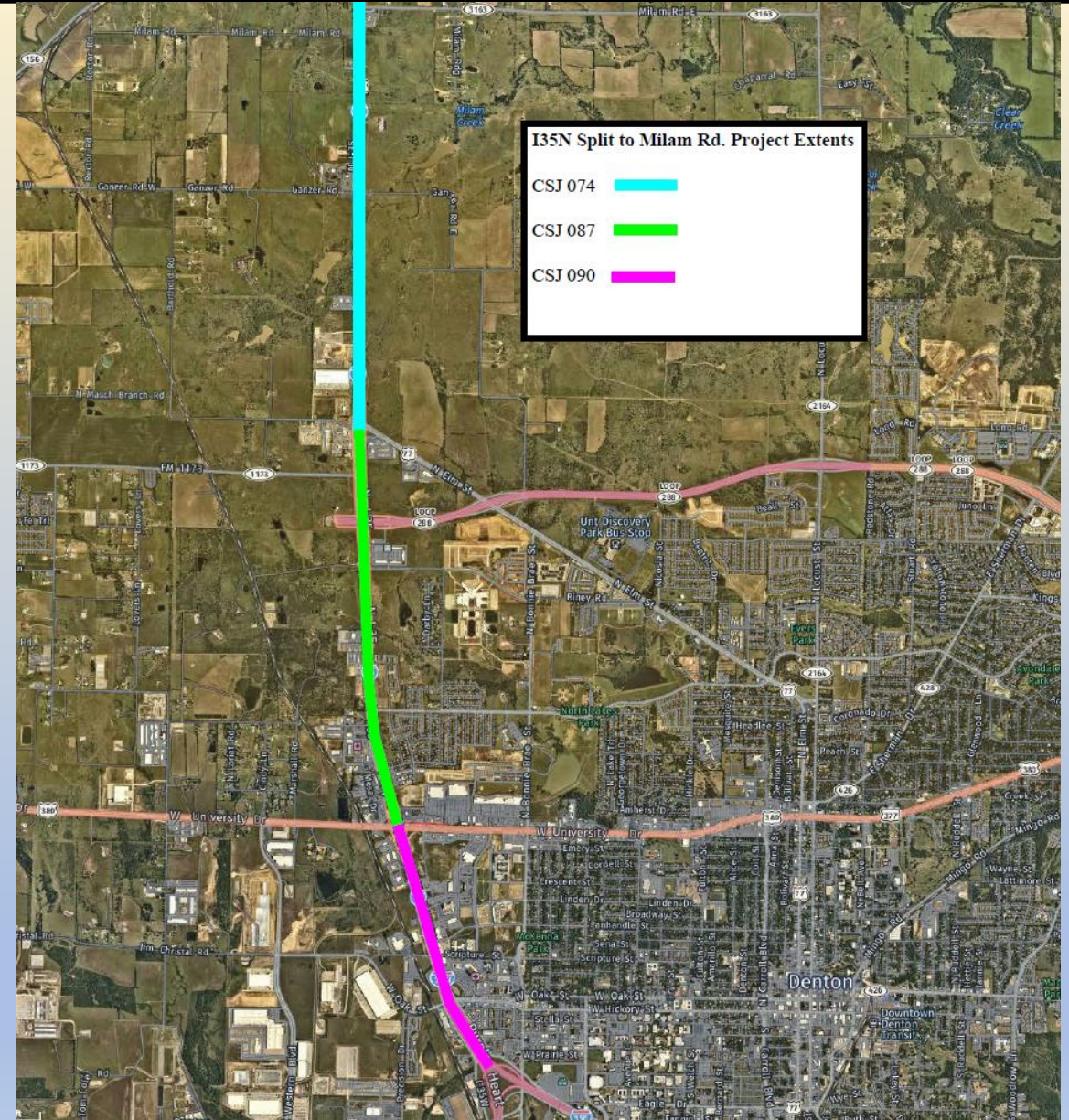
# Background & Purpose

- The future TxDOT expansion project of I35 requires the relocation of existing City utilities from their current location along the IH-35N frontage road into new easements.
  - Water and Wastewater Easements
  - Water Wastewater and Electric Easements
  - Temporary Construction Easements
- The project costs are reimbursable by TXDOT.
- In 2020 Kimley-Horn was contracted to design the project and acquire easements needed to relocate the facilities within the TxDOT right of way.



# Location Map

- There are 44 identified tracts of land needed for the easement acquisitions.
- The limits of the project are from the IH-35N Split to U.S. Highway 380 to U.S. Highway 77 to Milam Road.



# Recommended Action

- Staff recommends approval of the item. Approval will authorize the City Manager and the City Attorney to acquire the necessary property interests.
- In the event negotiation efforts fail and an impasse is reached, the City Attorney may file eminent domain proceedings to acquire the property interests, if necessary.
- Upon the reading of a favorable motion and second, staff will begin displaying the legal descriptions for each property interest needed for the project.