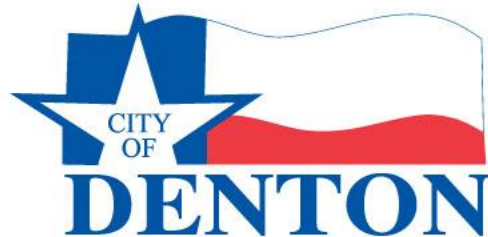


Water Utility Monitoring and Data Analytics Project

File # 8931



PUB26-045 - April 13, 2026

Water Utility Monitoring and Data Analytics Project

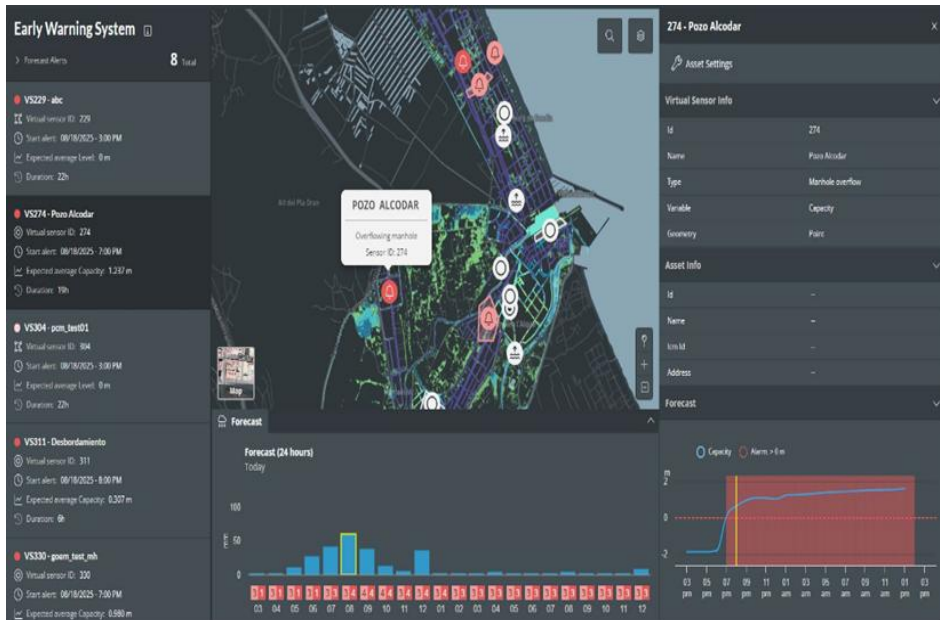
Wastewater System Monitoring

- Helps identify where stormwater or groundwater is entering the sanitary system, which can overload treatment plants.
- Early detection of surges in flow can trigger operational responses to prevent sanitary sewer overflows (SSOs).
- Identifies underperforming or over-capacity segments of the system.
- Provides real-world data to prioritize pipe upsizing, rehabilitation, or replacement.



Water Utility Monitoring and Data Analytics Project

Real-Time Data



- Interactive map views displaying the collection network and sensor locations
- Live visualization of current sensor data and flow conditions
- Prioritization of alarms based on severity and operational impact
- Automated notifications to alert staff of critical events in real time

Water Utility Monitoring and Data Analytics Project

Planning Data



- Real-time flow and pressure data calibrate hydraulic models with current system behavior, enhancing reliability.
- Continuous monitoring reveals bottlenecks and peak flow conditions that inform where upgrades are needed.
- Live system data helps prioritize projects based on actual performance, not assumptions.
- Post-project monitoring confirms whether CIP investments (e.g., pipe upsizing or I&I reduction) achieved intended outcomes.

Cooperative Purchasing Services Agreement

Staff recommends a five-year contract with Xylem Vue Inc. using a Cooperative Purchasing Service agreement.

File # 8931

Not to exceed amount: \$ 6,496,090





Questions?



PUB26-045 - April 13, 2026

