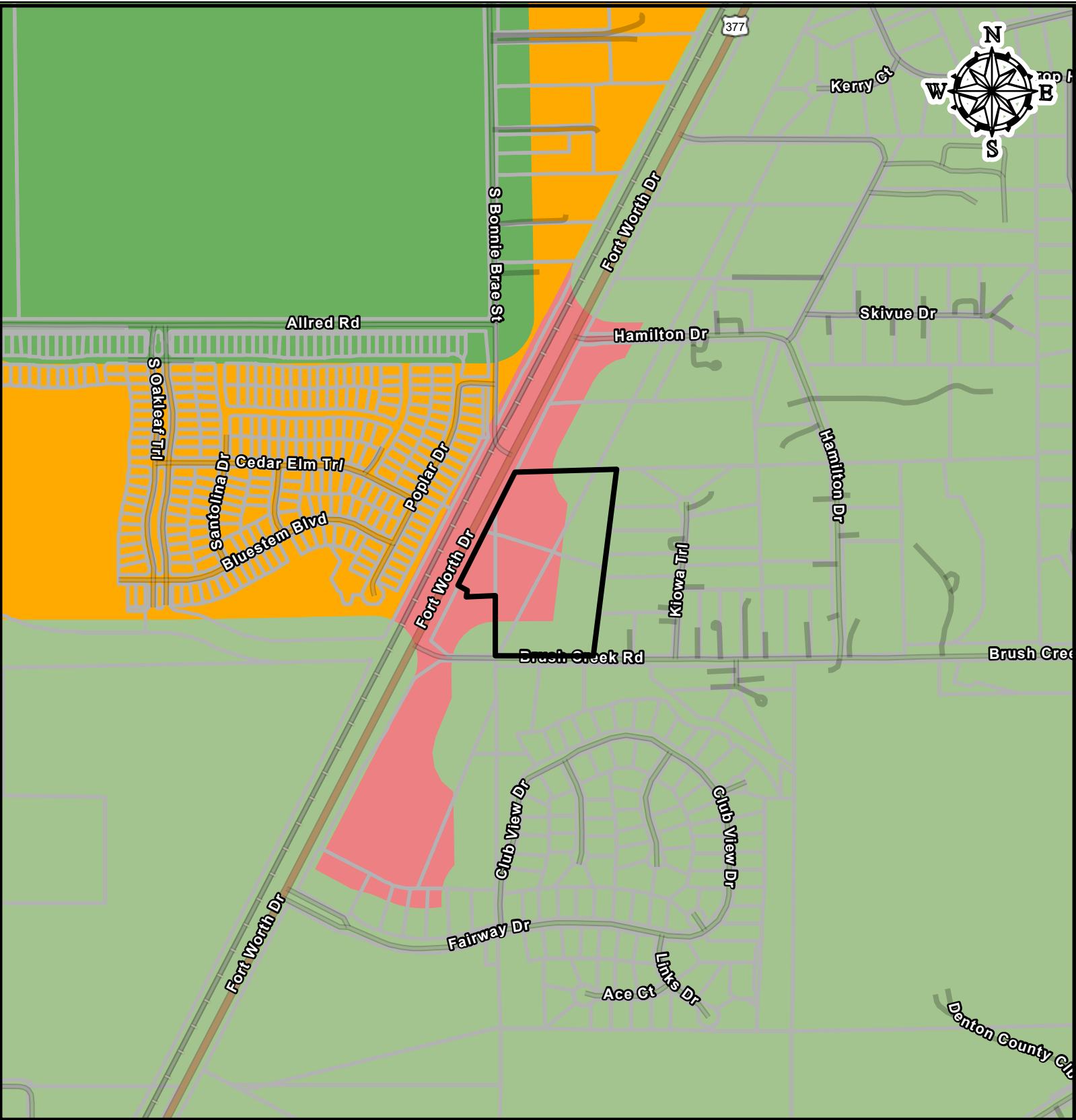
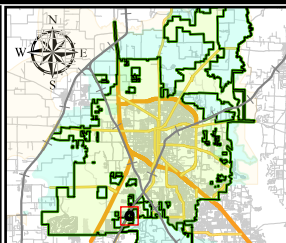



# PD24-0003 Future Land Use Map

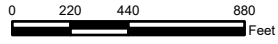


| Future Land Use 2040  |  |
|---|--|
| <span style="color: green;">■</span> Agriculture                | <span style="color: #f08080;">■</span> Neighborhood Mixed Use  |
| <span style="color: #90ee90;">■</span> Rural Areas              | <span style="color: #008080;">■</span> Neighborhood / University Compatibility Area                            |
| <span style="color: #ffff00;">■</span> Low Residential          | <span style="color: #ccccff;">■</span> Business Center   |
| <span style="color: #ffa500;">■</span> Moderate Residential     | <span style="color: #add8e6;">■</span> Light Industrial  |
| <span style="color: #8b4513;">■</span> Master Planned Community | <span style="color: #800080;">■</span> Industrial Commerce   |
| <span style="color: #800000;">■</span> Downtown Denton          | <span style="color: #0000ff;">■</span> Government / Institutional  |
| <span style="color: #ff00ff;">■</span> Regional Mixed Use       | <span style="color: #008000;">■</span> Parks / Open Space  |
| <span style="color: #ff69b4;">■</span> Community Mixed Use      | <span style="border: 2px solid black; display: inline-block; width: 10px; height: 10px;"></span> Site Location |





**CITY OF DENTON**  
Development Services • GIS  
Date: 11/7/2024



0 220 440 880 Feet

\*This product is for informational purposes and may not have been prepared for or be suitable for legal, engineering, or surveying purposes. It does not represent an on-the-ground survey and represents only the approximate relative location of property boundaries. Although every effort was made to ensure the accuracy of this data, no such guarantee is given or implied. Utilization of this map indicates the understanding that there is no guarantee to the accuracy of this data.