



**BOND**  
**PROGRAM 2023**



# Fire Stations 5 & 6

Meeting # 2

June 1, 2023

# Fire Station 5

2230 West Windsor

35 years old (1988)

8,033 sq. ft. (living/support: 4,044 – bays: 4,000)

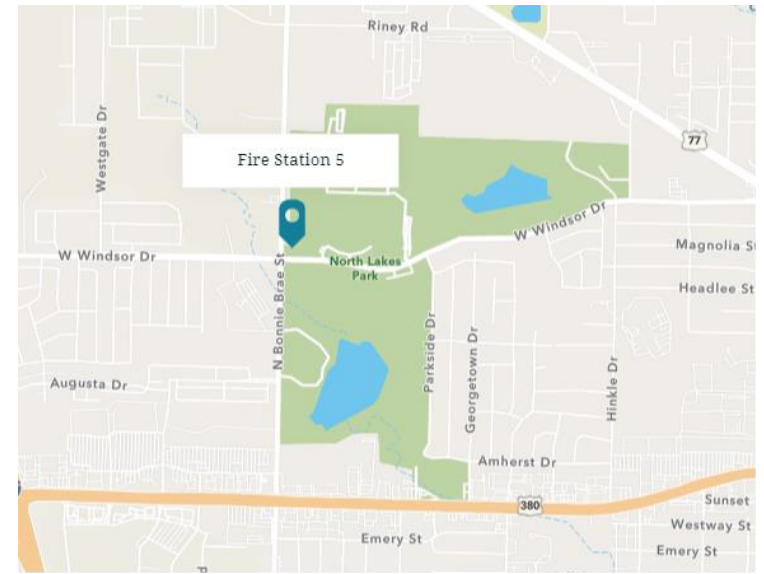
6 personnel per shift

Houses a Quint, Ambulance, Brush Truck and Hazardous Materials Unit

2022 Total Unit Responses – 6,273

Average responses per day – 17

Response studies identifies this as choice site



# Fire Station 6

3232 Teasley Lane

32 years old (1991)

5,995 sq. ft. (living/support: 3,596 – bays: 2,400)

5 personnel per shift

Houses an Engine and Ambulance

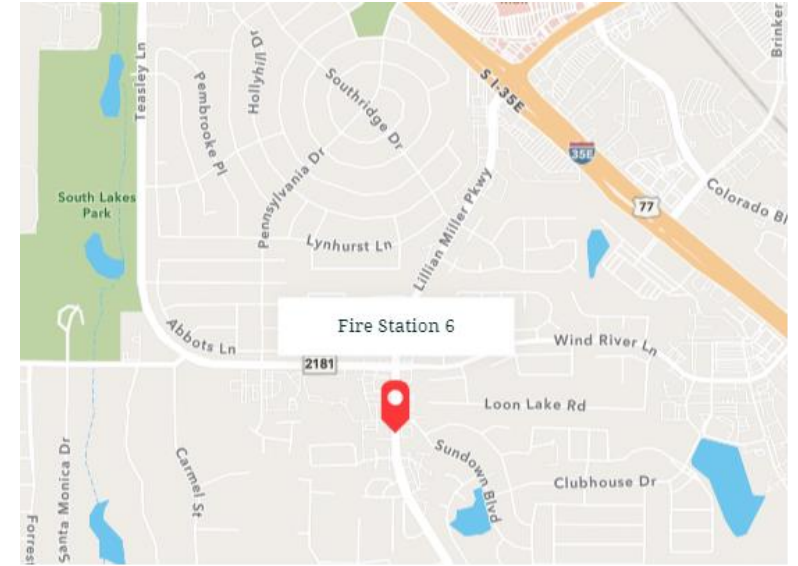
2022 Total Unit Responses – 4,925

Average responses per day – 13.5

Response studies identify the current location as a choice site

Video:

<https://youtu.be/hp4Ru-WQUXY>

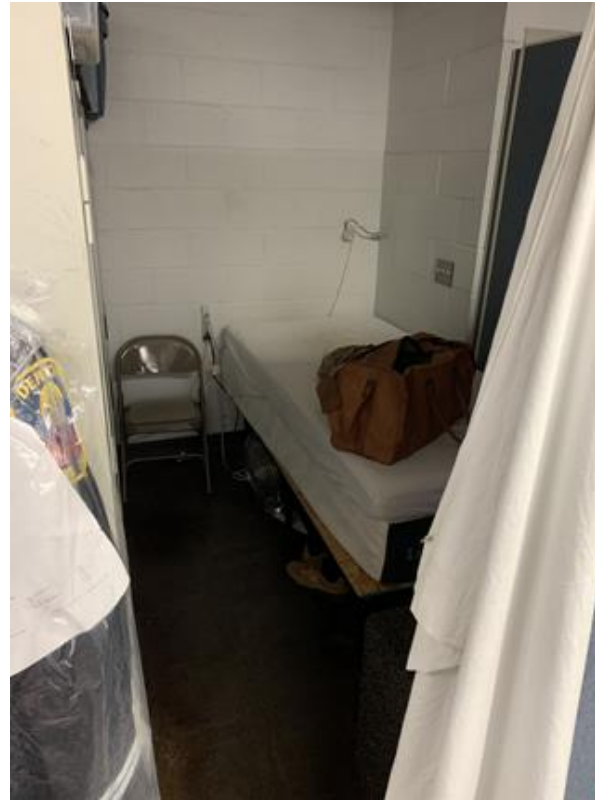




# Station Deficiencies

## Inadequate Employee Amenities

Barrack Style Sleeping and Hygiene areas



# Station Deficiencies

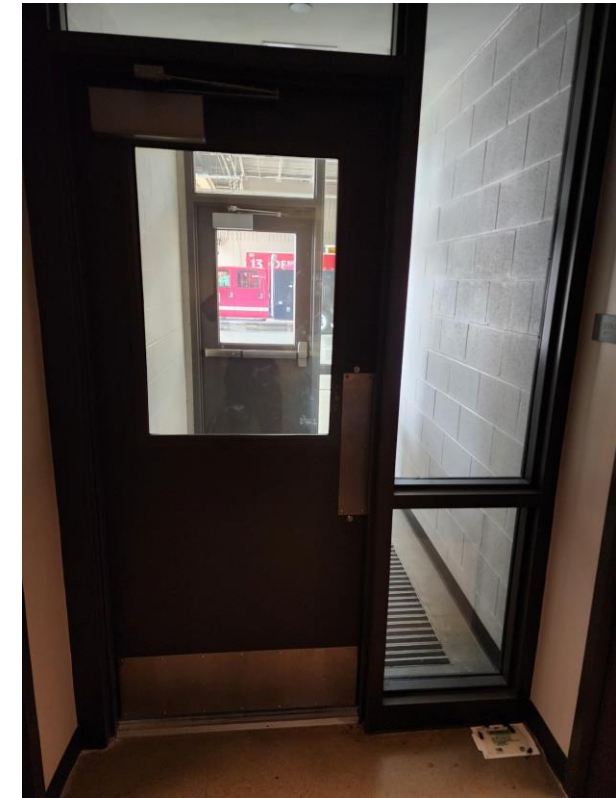
Lack of carcinogen and biohazard reduction zones (hot/warm/cold)\*\*

\*\* Accreditation Recommendations

Station 5 & 6 Design



Current Design





# Station Deficiencies

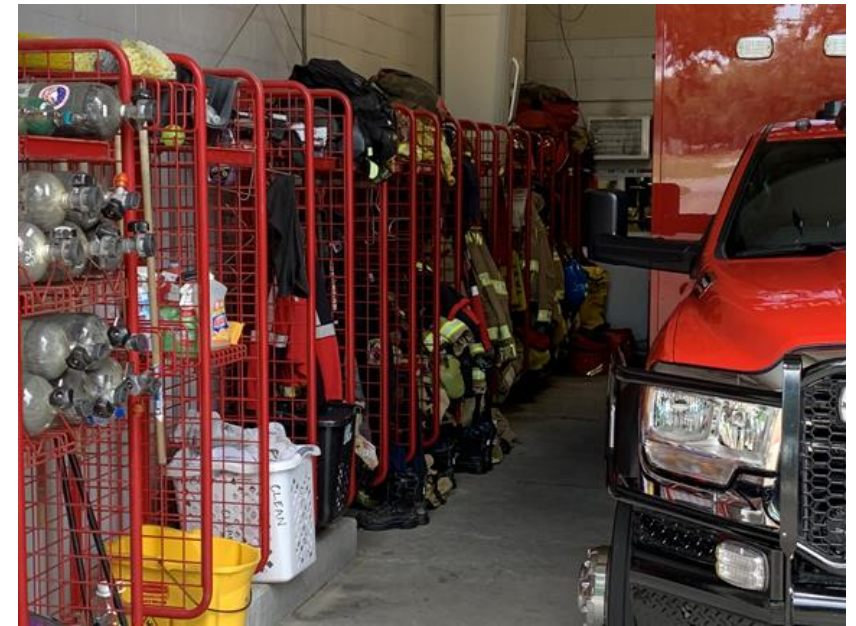
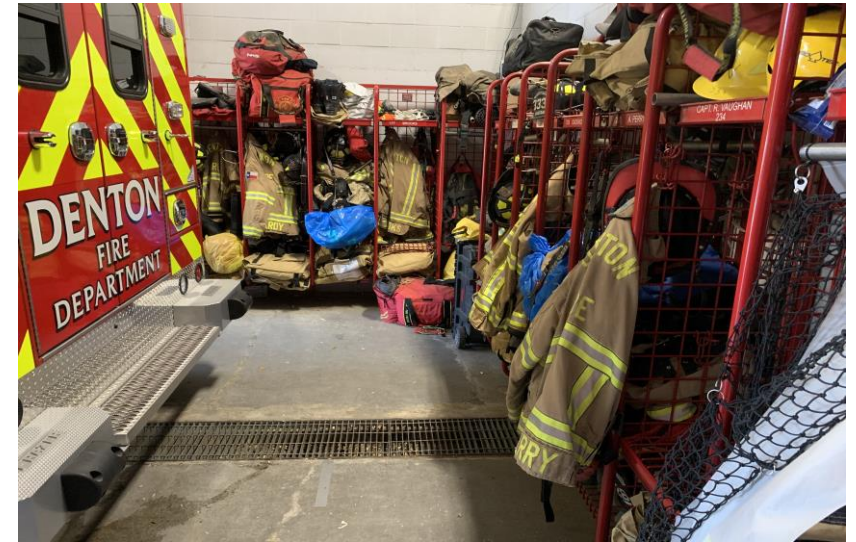
## PPE Storage\*\*

Insufficient space, exposure to vehicle exhaust and UV rays

- UV damaged gear in past 7 years- \$40,000
- NFPA 1851 non compliant

## Ineffective exhaust ventilation in apparatus bays\*\*

\*\* Accreditation Recommendations



# Station Deficiencies

- Inadequate apparatus bay heaters
  - Current forced air that is lost upon single time opening door(s)
  - New design standard is radiant tube heaters (heats the mass)
- Current emergency generators unable to meet power demands
  - Only powers radios, bay heaters, computers, phones and small percentage of electrical outlets
- Inadequate parking (employee and visitor) and station security



# Station Deficiencies

- Existing Horizontal Doors increase response times  
(DFD 2020 Strategic Plan)

Station 5 & 6 Bay Doors



New doors open in <7 seconds





# Station Deficiencies

## Station 5

- Traffic stack from Denton High School on Bonnie Brae impacting apparatus response



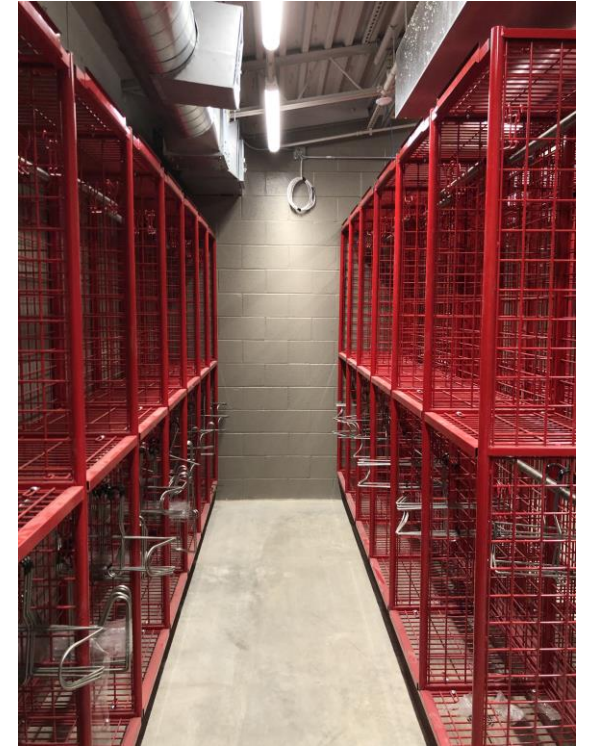
## Station 6

- Limited visibility for Traffic and Emergency Apparatus entering Teasley
- Absence of Drive Through bays for Apparatus (Requires Backing)



# National Fire Protection Association Standards related to Fire Station Design

- NFPA 1500 Standard on Fire Department Occupational Safety, Health, and Wellness Program
- NFPA 1710 Standard for the Organization and Deployment of Fire Suppression Operations, Emergency Medical Operations, and Special Operations to the Public by Career Fire Departments
- NFPA 1851 Standard on Selection, Care, and Maintenance of Protective Ensembles for Structural Fire Fighting and Proximity Fire Fighting



# Assessment – Facility Condition – Fire 5&6

## Facility Assessment

- Complete assessment of all city facilities (2022)
- Parking lot, finishes, flooring,, ADA barriers, infrastructure, wall cracks, shifting floor, major mechanical systems, electrical, backup power, living quarters and dining area.
- Significant investment needed immediately in Fire 6. Fire 5 needs attention to meet respectable condition for a fire hall.
- Fire 6 is behind the curve, must plan and execute immediately to avoid closure.

Facility Condition Index	Current	3-Year	5-Year	10-Year
Fire 5	1.20%	2.60%	4.20%	60.40%
Facility Condition Index	Current	3-Year	5-Year	10-Year
Fire 6	4.20%	13.90%	21.80%	39.70%

0-5%	In new or well-maintained condition.
5-10%	Subjected to wear but in serviceable and functioning condition.
10-30%	Subjected to hard or long-term wear, nearing end of useful life.
30%	Has reached the end useful or serviceable life. Renewal necessary.

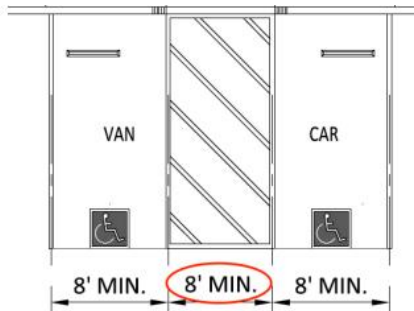




# Fire 5 & 6

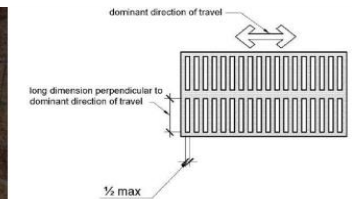
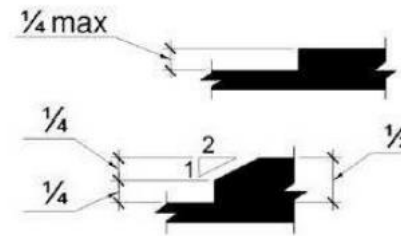
- The ADA Assessment identified 103 barriers at Fire 5 & 6, of that, 10 barriers fall within the high priority category.

Item	Number of Barriers
High Priority	10
Medium Priority	65
Low Priority	27
Total Items	103



## High Priority Barriers:

• Parking	High Priority 3	There are no van accessible parking stalls. Severely out of compliance.
• Parking	High Priority 2	The access aisle is not located on an accessible route of travel to the accessible building entrance. Severely out of compliance.
• Parking	High Priority 4	The access aisle is not a minimum 8 feet to the centerline of the stripe. Moderately out of compliance.
• Parking	High Priority 2	The access aisle contains a built-up curb ramp. Severely out of compliance.
• Parking	High Priority 2	The cross slope (short dimension) of the access aisle exceeds 2 percent. Severely out of compliance.
• Path of Travel (2)	High Priority 4	The concrete expansion joint is spaced greater than 1/2 inch. Moderately out of compliance.
• Path of Travel	High Priority 4	The walkway contains abrupt vertical edges and/or variations over 1/4 inch. Moderately out of compliance.
• Engine bay	High Priority 4	The grate openings are greater than 1/2 inch and are parallel to the direction of travel. Moderately out of compliance.



# Fire Stations 5 & 6

**Kenneth Hedges**

Kenneth.hedges@cityofdenton.com