



Legacy MF Development Public Access Easement

Parks and Recreation

June 28, 2022



Project Details

Site Information

Property Location

- East of S. Mayhill Rd.
- South of E. McKinney St.
- Adjacent to City Property along Pecan Creek.

Development Details

- Multifamily Development
- 15.58-acres
- 264 Units

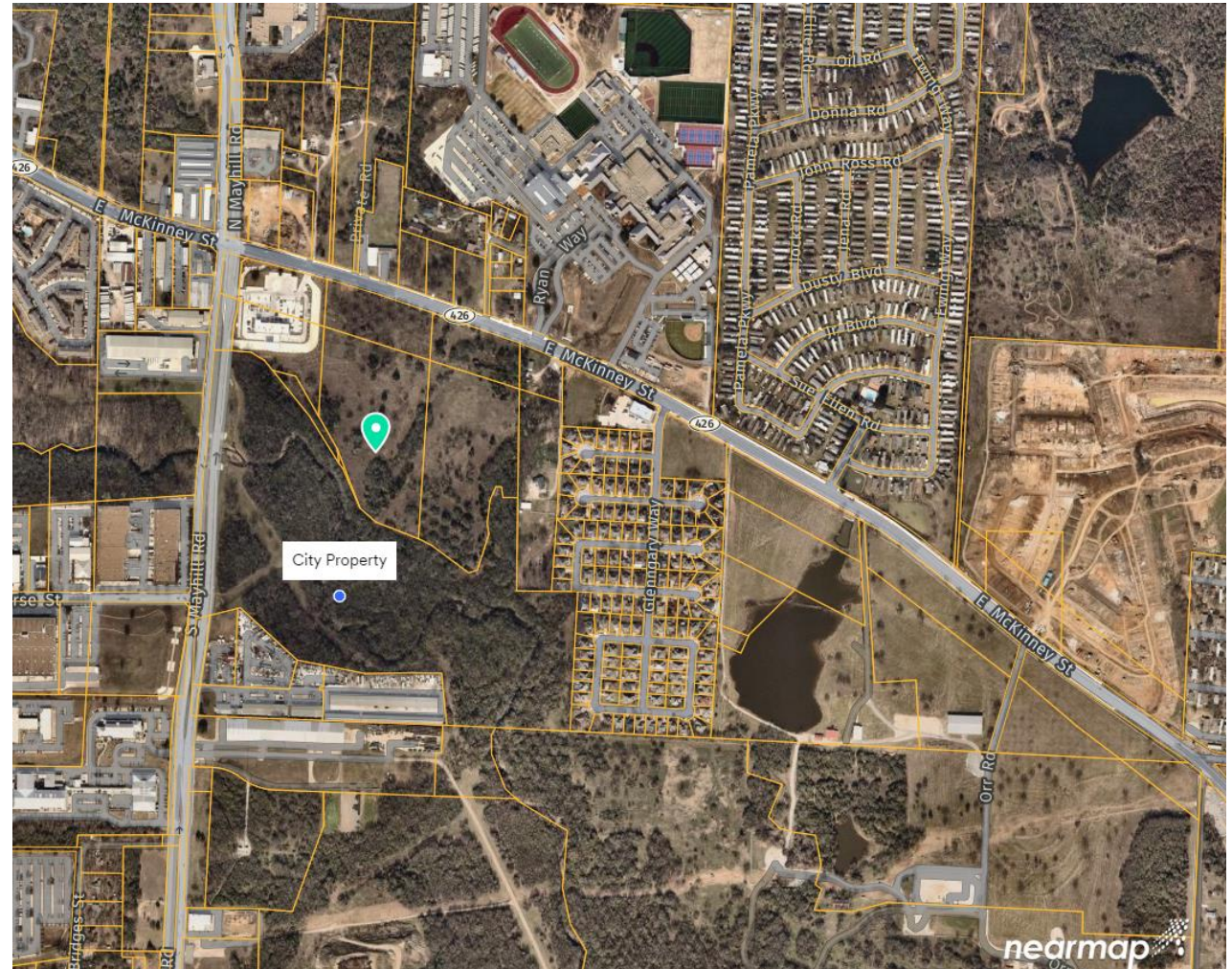
Park Dedication Ordinance Requirements

Land Dedication Owed

1.188 Acres non-floodplain Or
3.564 acres floodplain
Fees in lieu of land: \$70,592.83

Park Development Fees

\$49,368.00



Public Access Easement

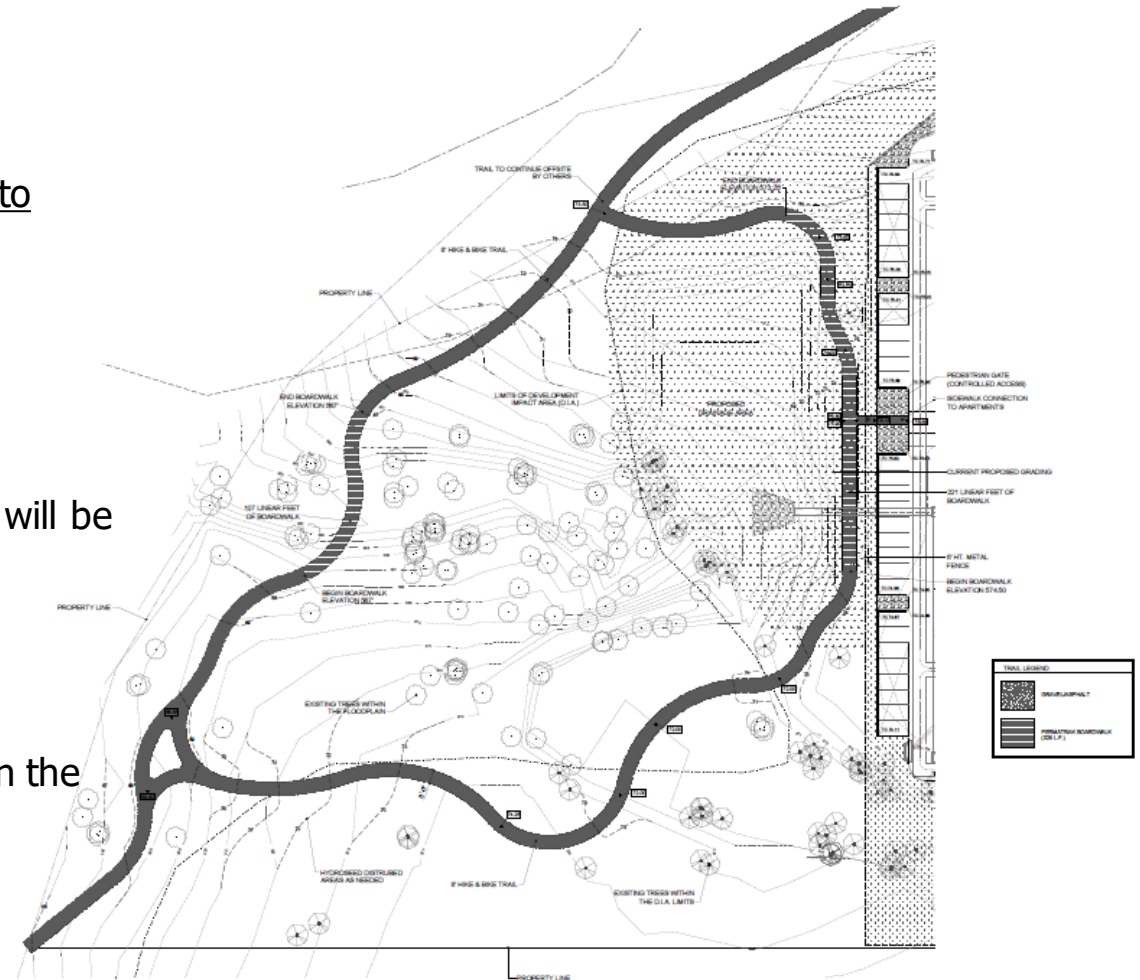
A condition within the Specific Use Permit (SUP) requires the Developer to provide a trail connection to the park property towards the south.

Developer is granting the following for public access easement.

- **Access easement of 3.7238 acres that includes a 30 ft buffer that will feature a 10ft trail for the future Pecan Creek Regional Trail. The City will be responsible for the area within the 30ft.**

Benefits

- Provides connection to the future Pecan Creek Linear Trail identified in the Parks, Recreation, and Trails Master Plan.



Questions?

