

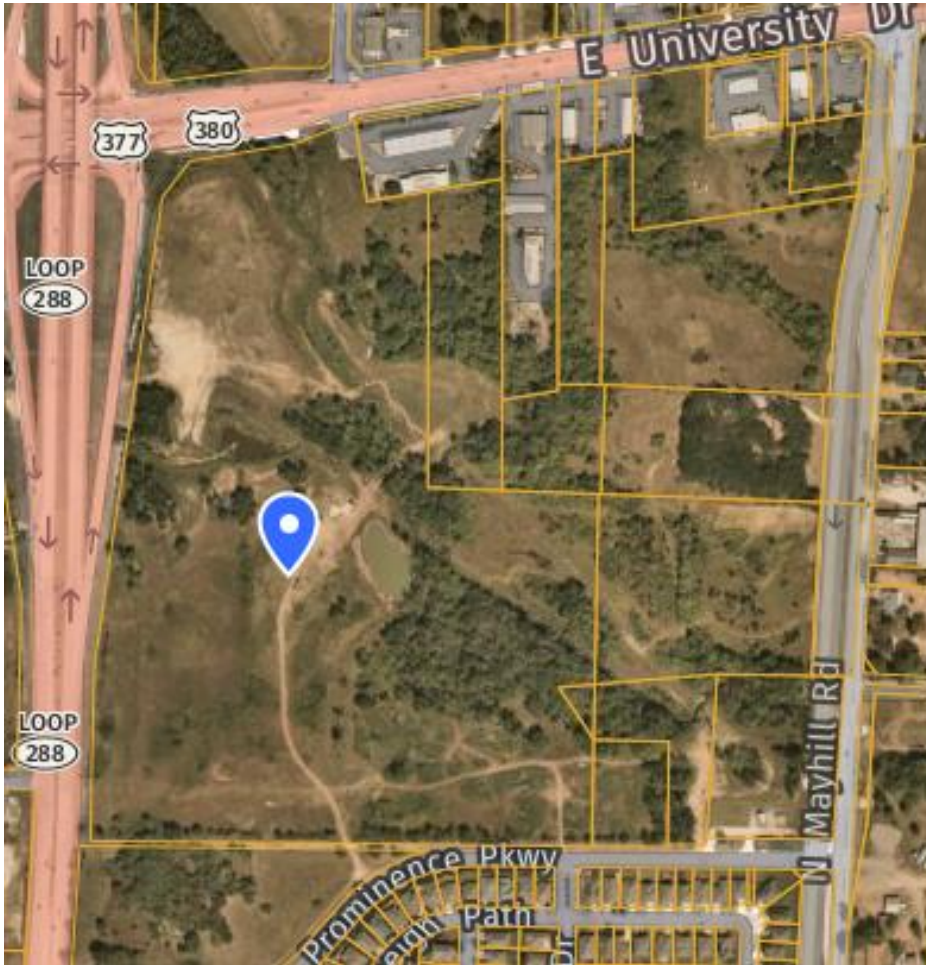


# **Prose Prominence Park Land Dedication**

---

**Parks and Recreation  
February 15, 2022**

# Site Information



## Prose Prominence Multi-Family Development

Located: East of Loop 288 & South of University Dr.

Total # of Units	Development Size
360	46.7705 Acres



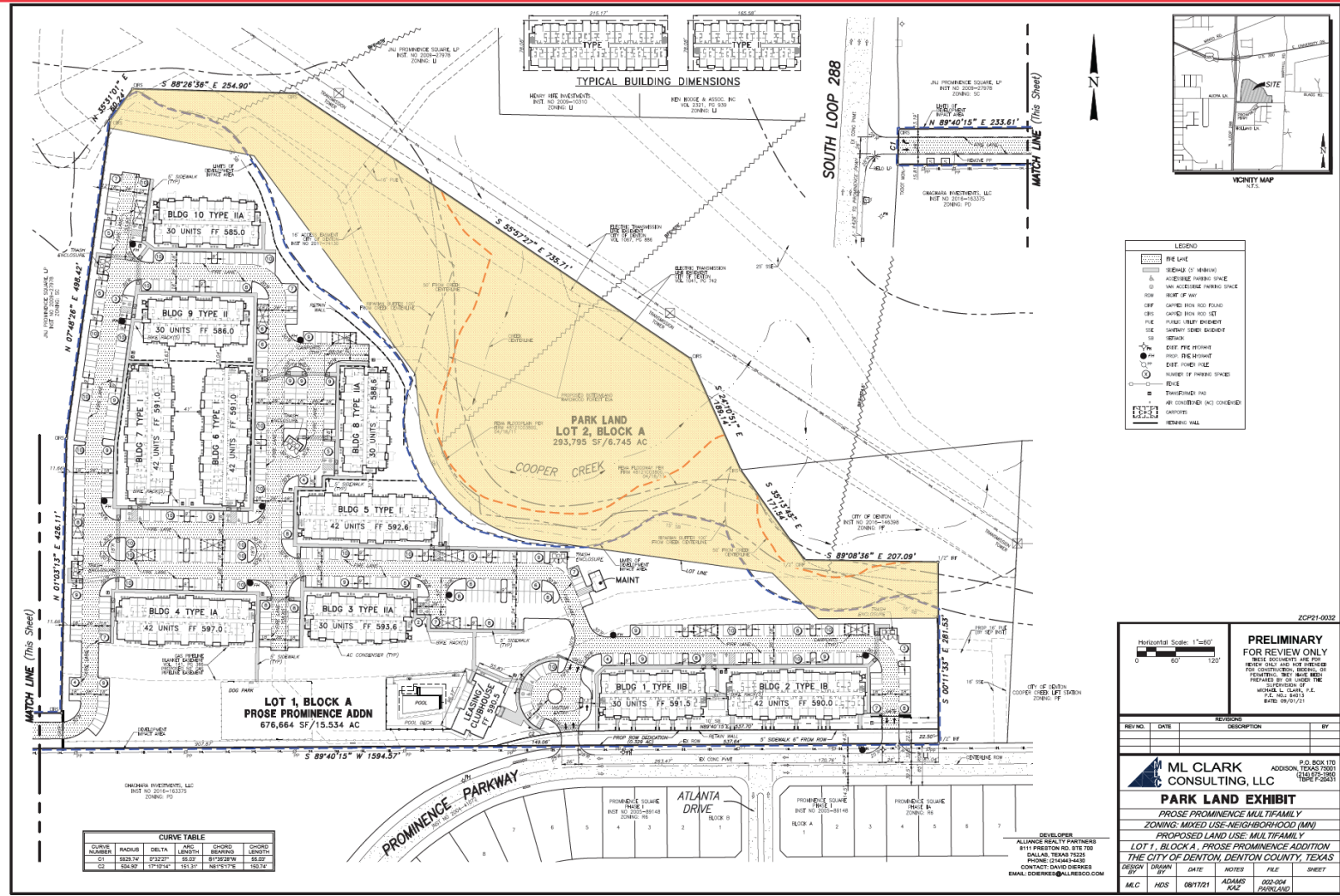
# Dedication Details

## Requirements per Ordinance

Land Dedication Owed	Park Development Fees
1.647 Acres	\$67,320.00

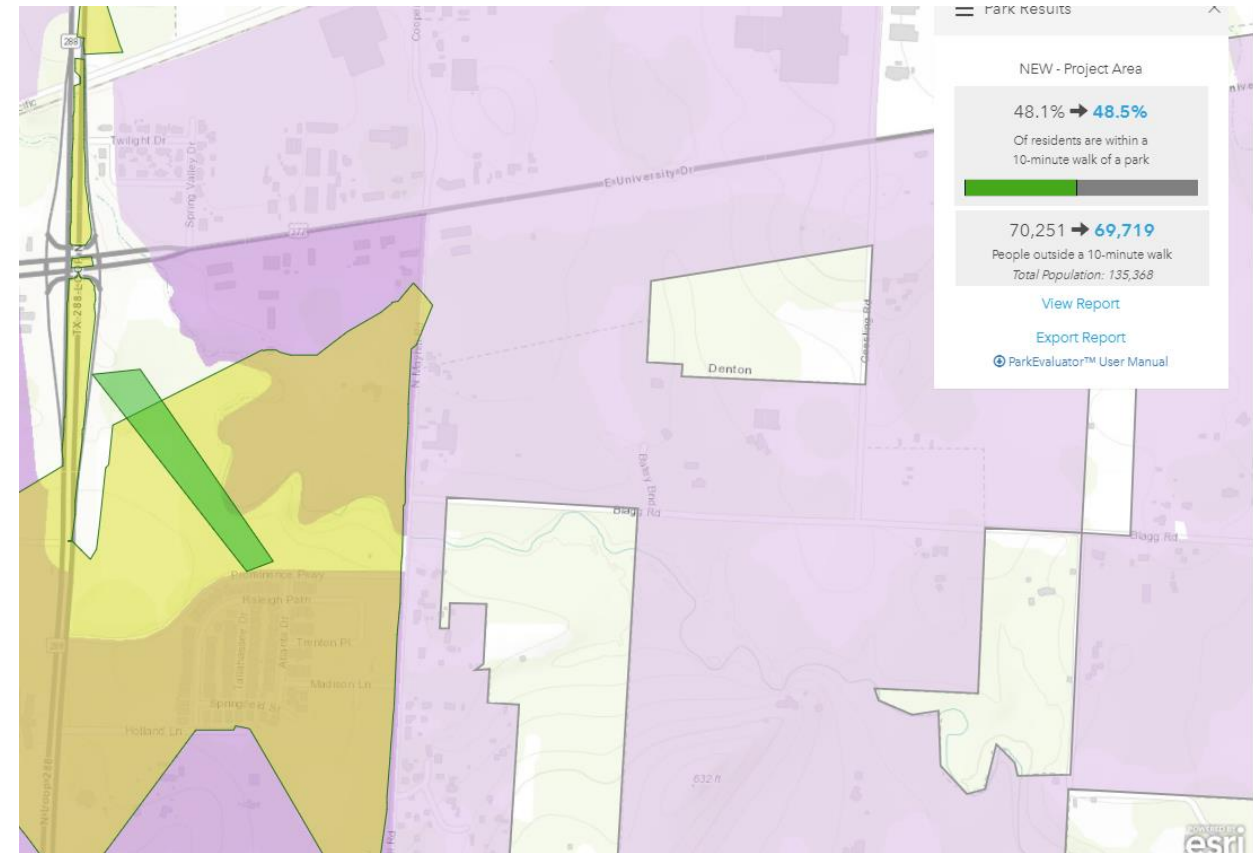
## Land Being Dedicated by Developer

Total	Non-Floodplain Amount	Floodplain Amount
6.745 Acres	1.0844 Acres	5.6606 Acres



# Benefits to City

- Neighborhood Park for surrounding area
- Improves 10-minute walk campaign. (48.1% to 48.5%) plus future residents of the development
- Access to Cooper Creek
- Parks, Recreation and Trails System Master Plan
- Denton 2040 Plan



---

# Questions?

