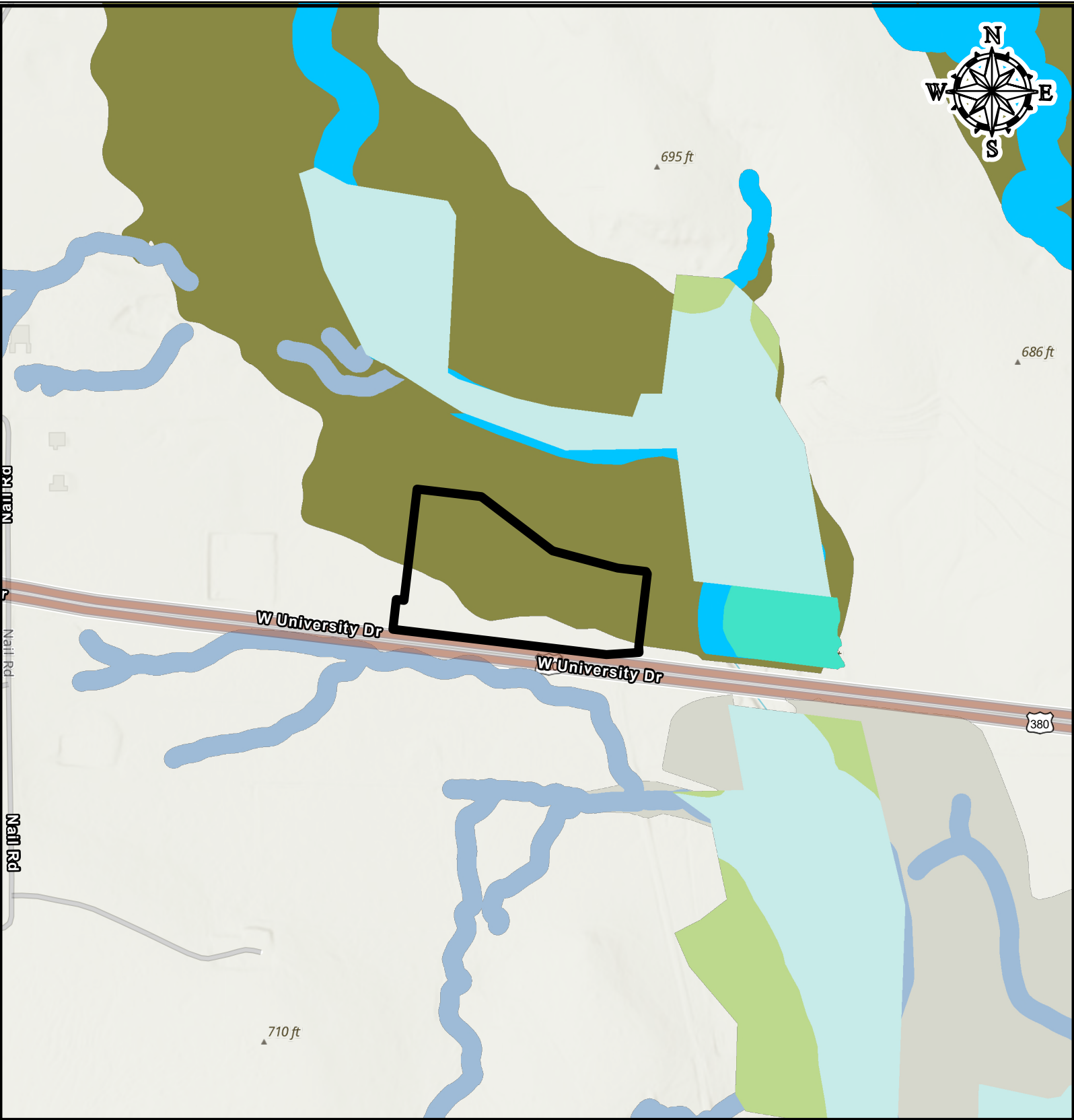
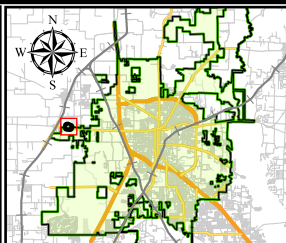


# CA25-0003 Environmentally Sensitive Areas



<b>Cross Timbers Upland Habitat</b>		<b>Riparian Buffer ESA</b>	
Designation Confirmed	Designation Confirmed	Not Assessed or Assessment Expired	Not Assessed or Assessment Expired
Not Assessed or Assessment Expired	Not Assessed or Assessment Expired	Undeveloped Floodplain	Not Assessed or Assessment Expired
<b>Water Related Habitat</b>		<b>Floodplain ESA</b>	
Designation Confirmed	Undeveloped Floodplain	Not Assessed or Assessment Expired	CA25-0003
Not Assessed or Assessment Expired	Not Assessed or Assessment Expired		

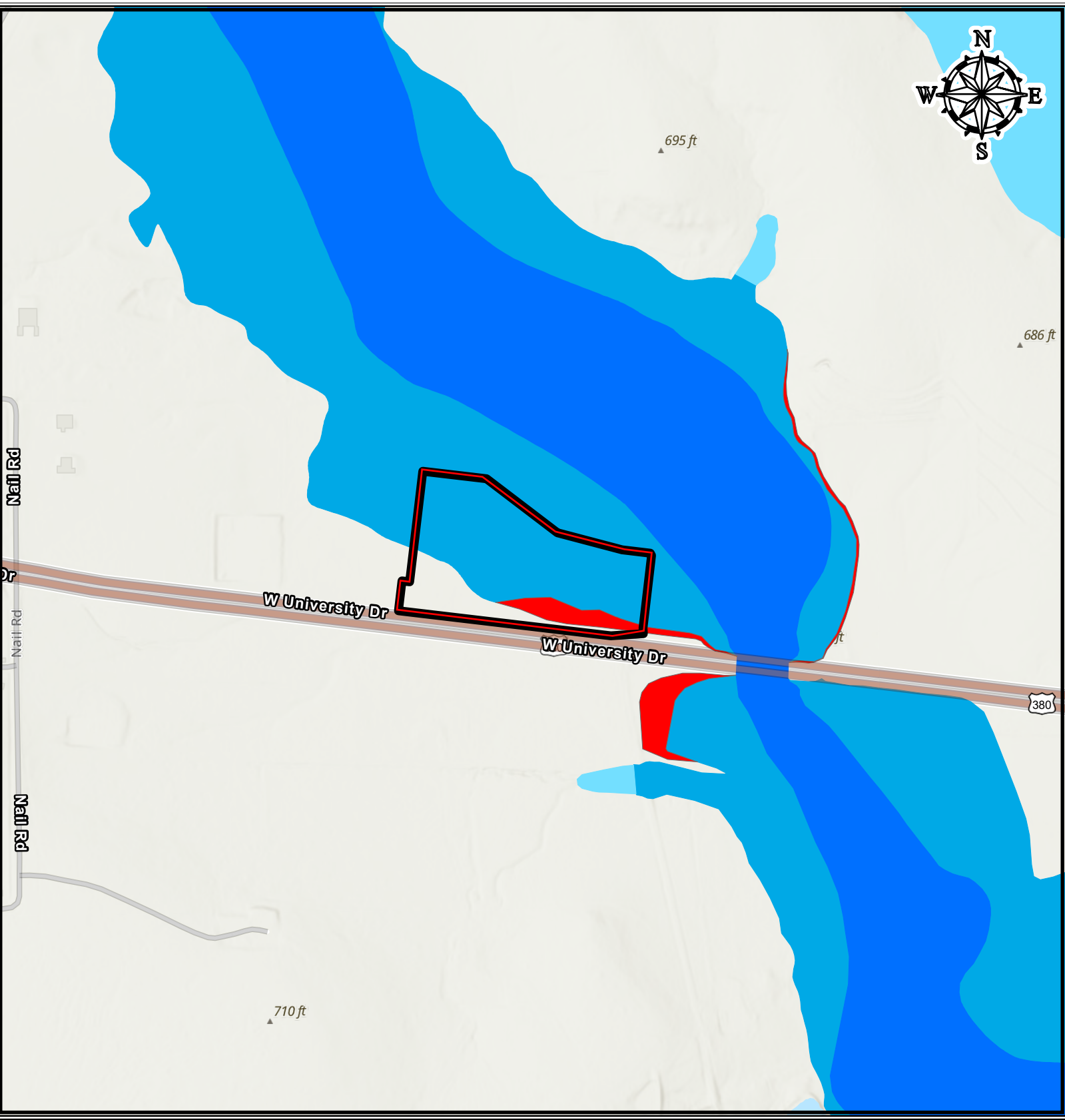


0 150 300 600 Feet

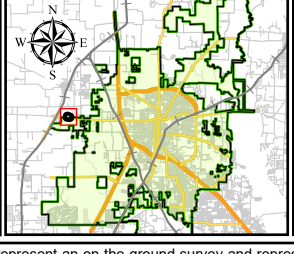
**Development Services • GIS**  
Date: 12/10/2025

\*This product is for informational purposes and may not have been prepared for or be suitable for legal, engineering, or surveying purposes. It does not represent an on-the-ground survey and represents only the approximate relative location of property boundaries. Although every effort was made to ensure the accuracy of this data, no such guarantee is given or implied. Utilization of this map indicates the understanding that there is no guarantee to the accuracy of this data.

# CA25-0003 FEMA Floodplain



- Zone X = 0.2% Annual Chance Flood
- Zone A = 1 % Annual Chance, No BFE Determined,
- Zone AE = 1 % Annual Chance, BFE Determined
- Floodway
- CA25-0003



0 150 300 600 Feet

**DENTON**  
Development Services • GIS  
Date: 12/10/2025

"This product is for informational purposes and may not have been prepared for or be suitable for legal, engineering, or surveying purposes. It does not represent an on-the-ground survey and represents only the approximate relative location of property boundaries. Although every effort was made to ensure the accuracy of this data, no such guarantee is given or implied. Utilization of this map indicates the understanding that there is no guarantee to the accuracy of this data."