



# **Climate Action Plan FY23-24 Update**

---

**Michael A. Gange**

**Environmental Services & Sustainability  
Director**

**July 15, 2025**

# Denton's Climate Action Plan

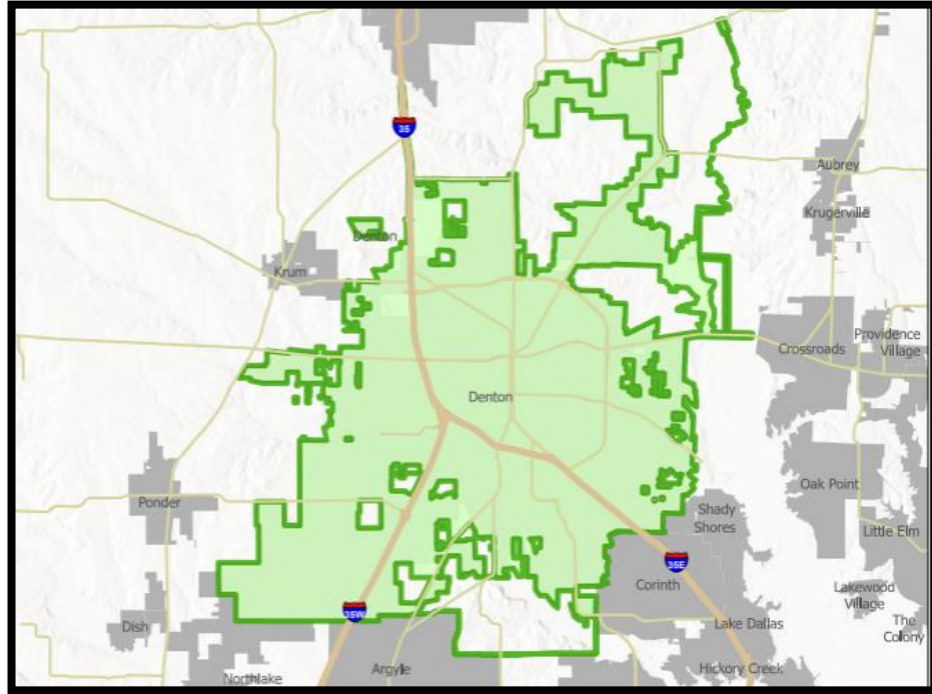
## Net-Zero Emissions by 2050

3 Primary Goals with 16 Actions:

1. Transportation (5 actions / 53%)
2. Buildings (8 actions / 35%)
3. Land Use (3 actions / 12%)

## Dashboard/Scorecard

- Other Master Plan alignment
- 60 measures (new & existing)



# City of Denton Accomplishments (FY23-24)

- 100% Renewable Electricity to all DME customers
- \$1M investment in Energy Efficiency
- Solid Waste overall diversion rate of 24%
- Social media engagement up 185%
- Rooftop Solar increased 3.2 MW from April 2023



# Goal 1 – Transportation (Community)

## Local/State/Federal Incentives

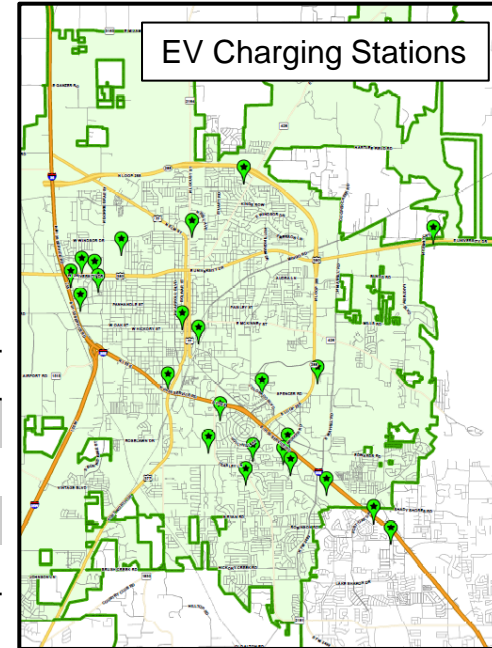
- City of Denton EV & E-Bike Incentives
- TxVEMP All-Electric Grant Program
- Federal EV and FCEV Tax Credit  
(Personal and Commercial)

## Market Assessment

- March 2025, 78 EV & 37 PHEV  
(March 2023, 40 EV & 33 PHEV)
- Manufacturers zero emission goals
- GM light-duty vehicles by 2035
  - Ford cars and vans by 2040
- EV charger incentive (at home):
- Ford, GM, Honda, Acura, & others

Category	Registered Vehicles	Registered EVs	%
City of Denton	108,979	1,424	1.31%
Denton County	826,965	27,289	3.30%
Municipal LD	363	14	3.85%
Municipal*	690	15	2.17%

City / Town	# of EV	%	City / Town	# of EV	%
Frisco	11,886	6.81%	Little Elm	1,751	3.55%
Flower Mound	2,765	4.23%	The Colony	1,082	2.72%
Carrollton	2,798	2.37%	Argyle	982	4.10%
Lewisville	2,387	2.18%	Highland Village	334	2.75%





# Goal 1 - Transportation (Municipal)

## 1.1 Decarbonize fleet (all sources)

- Added 11 Electric Vehicles (EV)
- Added 6 E-Bikes for Police Department
- First Electric Fire Engine (*April 2025*)
- EV Options available for light duty fleet
- Funds available to offset incremental cost



# Goal 1 - Transportation (Community)

## 1.2 Improve Active Transportation Infrastructure

- Added 4.2 miles of trails
- Repaired almost 2 miles of sidewalks

## 1.3 Encourage Walking and Biking (no emission modes)

- 57% of residents are within 10-minute walk from a park
- Issued 67 E-Bike rebates

## 1.4 Decrease total number of trips in vehicles

- DCTA ridership increased to 3,189,372 riders across all modes (up 9.37%)



## Goal 2 - Building Measures (Community)

- 769 GreenSense rebates FY23-24

HVAC - 327 (up 275%)

Windows - 74 (up 54%)

Insulation - 55 (up 243%)

Other – 213 (e.g., E-bikes)

- Utility Usage

Electric decreased 5% per customer

Natural Gas decreased 1% community wide

Water decreased 7% community wide

**94% Rebates** for  
2009 or older homes

2021 gains approx. **40%** more  
efficiency compared to 2009

Label	Estimate
<b>YEAR STRUCTURE BUILT</b>	
2020 or later	3,991
2010 to 2019	11,734
2000 to 2009	13,003
1980 to 1999	15,243
1960 to 1979	11,378
1940 to 1959	3,142
1939 or earlier	1,220

**74%**

## Goal 2 - Building Measures (Municipal)

- Converted to LED lighting at 18 facilities (2020-2024)
- Upgraded HVAC Control System
- Municipal Electric Usage decreased 9.27%
- Municipal Water Usage decreased 34%

LED up to **80%** more efficient &  
convert **95%** of energy to light

City Buildings	Count
Tier 1 – Staff/Public Usage	63
Tier 2 – Partial Staff Usage	30
Tier 3 – Intermittent Staff Usage	111
<b>Total</b>	<b>204</b>





## Goal 3 – Land Use

### 3.1 Enhance Access to Necessities (walkable communities)

- Approx. 57% of residents are within 10-minute walk from a park
- Shared wall construction

	2016	New	2025
Single-Family Detached	221	224	445
Duplex	28	58	86
Multifamily*	-	683	683
<b>TOTAL</b>	<b>249</b>	<b>965</b>	<b>1,214</b>

Energy cost is a significant portion of overall cost of housing. Shared Wall construction is **35% to 55% more efficient** than single family detached construction.

### 3.2 Produce Renewable Natural Gas from Landfill

- SWR in negotiation for RNG contract (Landfill and PCWRP)



# Dashboard / Scorecard



Transportation ▾ Buildings ▾ Land Use ▾

Q Search

## Climate Action Plan



### Transportation

**Buildings**  
Enhance buildings to improve efficiency, resilience, and reduce long-term impact.

Description

#### Reduce Waste Produced per Capita

Why? Extend life of landfill, control collection costs, and reduce disposal and collection emissions.

#### Increase Waste Diversion (Recycling, Composting, etc.)

Why? Extend landfill life expectancy and reduce impact on raw materials.

#### Maximize Organic Diversion for Renewable Natural Gas

Why? Renewable Natural Gas offsets the environmentally impact from Natural Gas usage.



### Buildings



### Land Use

Progress

Status

10%

10%

20%

10%



July 15, 2025

ID25-421

10

## Encourage Energy Efficiency Upgrades to (Existing Buildings)

### GreenSense Energy Efficiency Rebates

The GreenSense program promotes energy efficiency, reducing electricity use and carbon emissions to help Denton and the environment. Upgrades like HVAC systems, insulation, and smart thermostats lower energy waste and pollution. A total of

**\$989,398**

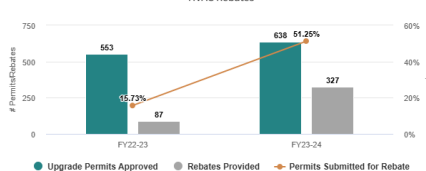
in rebates were provided in FY23-24.

To date, in FY24-25, a total of \$240,522 in rebates have been provided.

### Energy Efficiency Rebate Dollars Provided



### HVAC Rebates



### Windows and Doors Rebates

