

5000 AIRPORT RD. • DENTON, TEXAS 76207 • (940) 349-7736 • FAX (940) 349-7289  
DENTON ENTERPRISE AIRPORT • DTO

## MONTHLY OPERATIONS REPORT May 2026

The following tables provide details on operations, fueling, based aircraft, alerts, and incidents. Historical Airport Operations, **Exhibit 1**, provides airport historical operations data from 2016-2026.

<b>OPERATIONS (Calendar Year)</b>						
Operation Type	Mar-25	Mar-26	% Change	2025 YTD	2026 YTD	% Change
IFR Itinerant	1,071	973	-9.2%	2,983	2,367	-20.7%
VFR Itinerant	8,914	7,646	-14.2%	24,351	23,703	-2.7%
Local	5,195	5,901	13.6%	17,293	16,650	-3.7%
<b>Total</b>	<b>15,180</b>	<b>14,520</b>	<b>-4.3%</b>	<b>44,627</b>	<b>42,720</b>	<b>-4.3%</b>

<b>FUELING (Fiscal Year)</b>						
Type	Mar-25	Mar-26	% Change	2025 YTD	2026 YTD	% Change
AvGas	58,358	49,370	-15.4%	306,296	304,851	-0.5%
Jet A	79,587	68,757	-13.6%	453,077	403,641	-10.9%
<b>Total</b>	<b>137,945</b>	<b>118,127</b>	<b>-14.4%</b>	<b>759,373</b>	<b>708,492</b>	<b>-6.7%</b>

<b>BASED AIRCRAFT</b>					
Description	Single Engine	Multi-Engine	Jet	Helicopter	Total
Dec 2025	378	68	30	16	492
Dec 2024	352	71	35	18	476
Dec 2023	309	62	34	15	420

*NOTE: Due to agenda-related deadlines, figures for the prior month will be available at the next Airport Advisory Board meeting.*

<b>ALERTS</b>		
<b>Date</b>	<b>Type</b>	<b>Description</b>
03/09/2026	Alert III	An aircraft had an engine issue during a stop and go. The aircraft ran off the south end of 18R into the grass and was tugged back to US Aviation hangar on Juliet. There were no other damage or injuries reported.
03/13/2026	Alert III	Pilot stated that after landing on runway 18R he did not slow down enough to make the turn onto A6. This caused the aircraft to overrun the runway threshold into the grass. The pilot and passengers were able to push the aircraft back onto the pavement and taxi it to parking under its own power. No other damage or injuries were reported.
03/20/2026	Alert III	A Cessna 172P departed DTO from RWY 18L at 14:13 local, CDT. Shortly after takeoff, the aircraft began losing altitude. At 14:14:26 local, the aircraft impacted trees 1150 ft (352m) SE from the south end of RWY 18L/36R, and approximately 700 ft (214m) east of an extended runway centerline. A post-crash fire ensued. Both the pilot in command and the one other occupant of the aircraft survived the crash with non-life-threatening injuries and were able to extract themselves from the aircraft. Airport Operations arrived at the scene, quickly contacted the pilots and guided them to paramedics. Airport Operations then directed ARFF back to the crash site. ARFF extinguished the fire and secured the scene. Texas DPS troopers arrived soon thereafter to lend assistance, until FSDO inspectors could respond to investigate. The pilots were transported to the Medical City hospital.

<b>INCIDENTS</b>	
<b>Date</b>	<b>Description</b>
03/05/26	A citation taxiing south on bravo cut corner while turning left onto foxtrot and stuck left main gear in the sod. FBO and Precision Maintenance staff were able to tug the airplane free and tow it to parking.
03/11/26	A wind gust caused an aircraft to tip on the left wing and propellor in the A7 run-up area. This caused damage to left wing, propellor blades, and wheels. The aircraft was pulled down onto wheels by maintenance and towed to hangar at the end of kilo.
03/15/26	An aircraft attempted to taxi from Hotel to Lima and tipped due to the high winds. The aircraft tipped on to its left wing and nose before the pilot and one other individual righted aircraft and pushed it to a hangar on Hotel. No other damage or other injuries were reported.

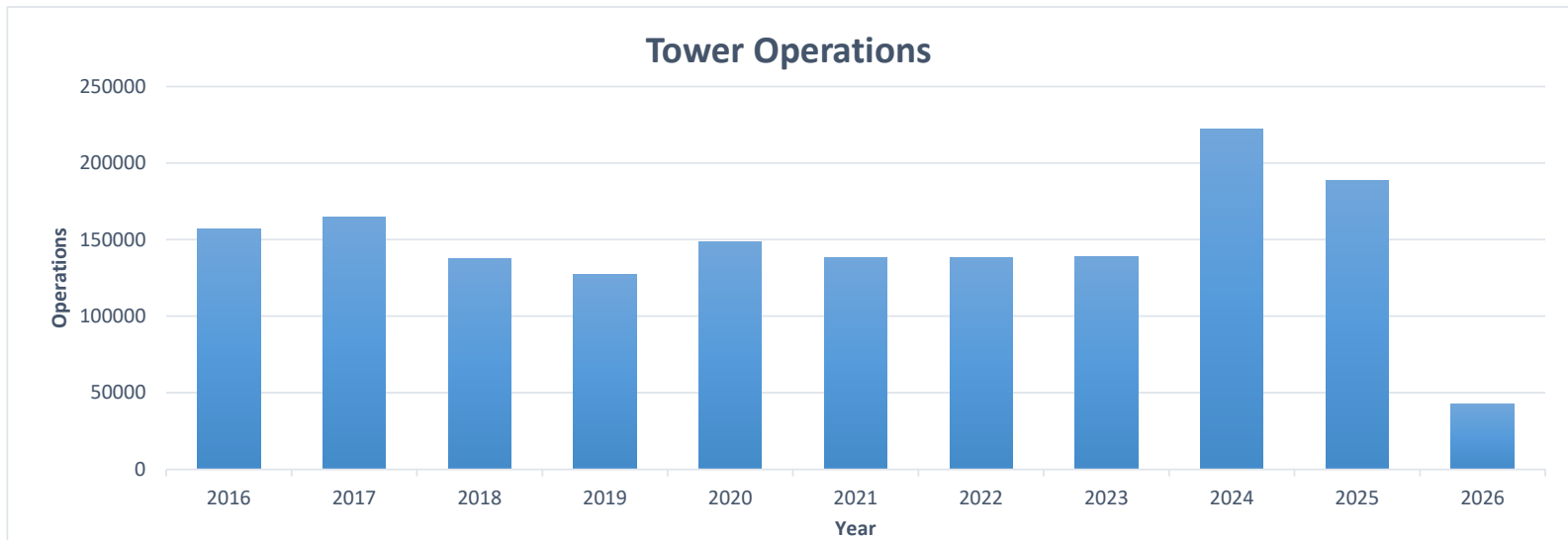
<b>March WEATHER DATA</b>	
<b>Days with Measurable Precipitation</b>	<b>Days with an Avg. Wind over 10mph</b>
2	24

**EXHIBITS**

1. Historical Airport Operations 2016-2026 (Attached)
2. Construction Updates

# DENTON ENTERPRISE AIRPORT HISTORICAL OPERATIONS

Month:	2016	2017	2018	2019	2020	2021	2022	2023	2024	2025	2026
JAN	12074	11070	13036	12323	9830	9138	14030	13814	14618	16068	11418
FEB	12530	9300	7899	9307	11704	6697	10469	13218	20919	13379	16782
MARCH	9240	10846	10659	13074	10055	12423	12719	15134	21655	15180	14520
APRIL	10226	9390	11314	11709	12090	10631	13601	14993	16992	13284	
MAY	11958	11914	14854	11172	12690	10704	9902	19470	19503	15839	
JUNE	11962	10342	12521	12468	11282	11519	15321	18549	22043	16270	
JULY	13190	11162	13553	11718	14274	14124	15936	19931	13869	18637	
AUG	11461	10514	14888	10392	13076	12868	17597	21408	14855	14955	
SEP	13523	11010	11477	12176	10911	13672	20217	20484	20090	18046	
OCT	13021	10870	13682	11444	11445	12837	17794	18362	23875	17063	
NOV	9195	10249	13276	11367	10508	12482	14415	18860	18914	16431	
DEC	9166	10899	11539	11379	10296	12051	14217	17977	14613	13518	
<b>Total:</b>	<b>157339</b>	<b>165052</b>	<b>137546</b>	<b>127566</b>	<b>148698</b>	<b>138529</b>	<b>138161</b>	<b>139146</b>	<b>221946</b>	<b>188670</b>	<b>42720</b>



Tower OPS 2016-2026

## CONSTRUCTION UPDATE May 2026

The following provides a status update on the capital improvement projects that are in progress at the Airport:

### Site 10:



# DENTON ENTERPRISE AIRPORT (KDTO), TEXAS

## 70' X 65' CORPORATE HANGARS



Delivering July 2026

### PROJECT SUMMARY:

Introducing a rare opportunity to secure one of only four newly constructed corporate aircraft hangars at Denton Enterprise Airport. Specifically **designed for high-end private & corporate aircraft operators**, your own direct ground lease with the City, no association, secure gated airside with private auto access.



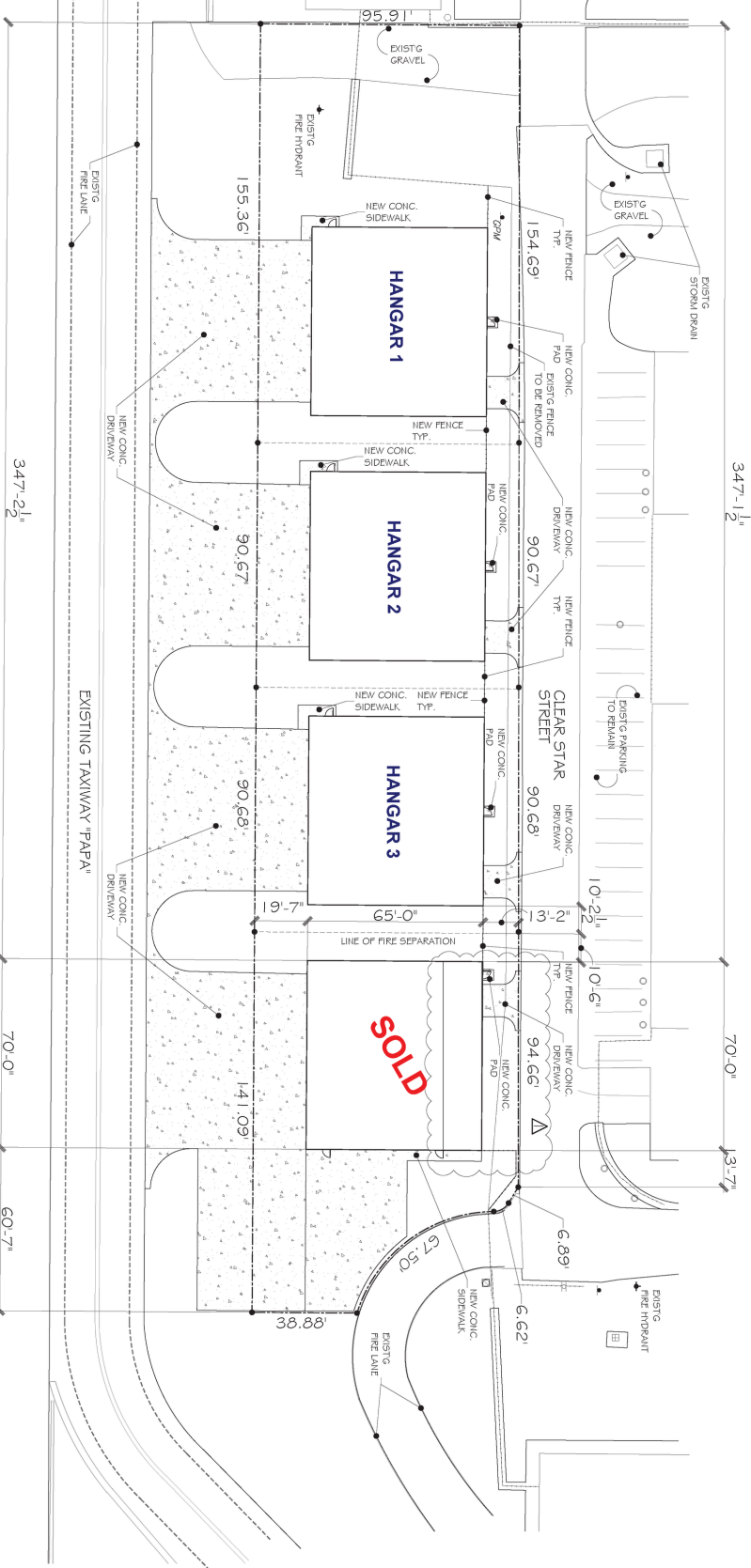
### NEW CONSTRUCTION:

- **70' x 65' Corporate Hangars**
- 60' x 18' Hydraulic Hangar Doors
- 12' x 14' Auto Garage Access
- **40-Year Land Lease with City**
- 200 Amp; 3-Phase Electric
- LED Lighting, Big Ass Fans, Insulated, Floor Drains, & more!

Ryan Cox, Broker  
**682-225-3262**  
ryan@airspacetexas.com  
airspacetexas.com

# 70' X 65' CORPORATE HANGARS

## Denton Enterprise Airport - KDTO



**AIRSPACE**  
 Ryan Cox, Broker  
 682-225-3262  
 ryan@airspace.com  
 airspacetexas.com

AREA OF EXTERIOR WALL OPENINGS BASED ON FIRE SEPARATION DISTANCE

	HANGAR 1	HANGAR 2
1. Distance from Last Used To		
2. Distance from Fire Separation	1:41.24.1	1:41.24.1
3. Unobstructed Opening Size	24.84.1	24.84.1
4. Maximum Allowable Area, %	1.5%	1.5%
5. Maximum Allowable Area, sq. ft.	1.5%	1.5%
6. Degree of Opening	Unobstructed	Unobstructed
7. Maximum Allowable Area, sq. ft.	1.5%	1.5%

80.53 ACRES  
 LOT 1, BLOCK 1  
 THE SOUTH-EAST AIRPORT  
 ADDITION  
 CITY OF DENTON  
 DENTON COUNTY, TEXAS

**SITE PLAN**  
 1" = 20' of scale

**SITE NOTES:**  
 1. Structure location may vary due to terrain and terrain.  
 2. Verify lot size and all dimensions prior to construction.

A CUSTOM BUILDING PROJECT FOR:  
**DENTON EXECUTIVE HANGAR #1**  
 DENTON ENTERPRISE AIRPORT  
 3300 CLEAR STAR STREET  
 DENTON, TEXAS

**JOB #**  
 24-081



**CROSS TIMBERS ARCHITECTS**  
 4315 WINDSOR CENTRE TRAIL STE # 400  
 FLOWER MOUND, TEXAS 75026  
 PHONE: (972) 355-7754

**DATE:** MARCH 3, 2025  
**DRAWN BY:** J.A., C.R.  
**REVISIONS:**  
 JULY 11, 2025  
 AUGUST 12, 2025  
 NOVEMBER 6, 2025

**CLAUSE**  
 Cross Timbers Architects assumes no liability for any structure built from these plans. Before construction, the purchaser, builder, or contractor must verify dimensions, compliance with all governing codes & ordinances & recognize site conditions. Only a qualified engineer, architect, or structural engineer is permitted to alter these plans. These plans shall remain the property of Cross Timbers Architects & are not to be copied or reproduced without written permission.

