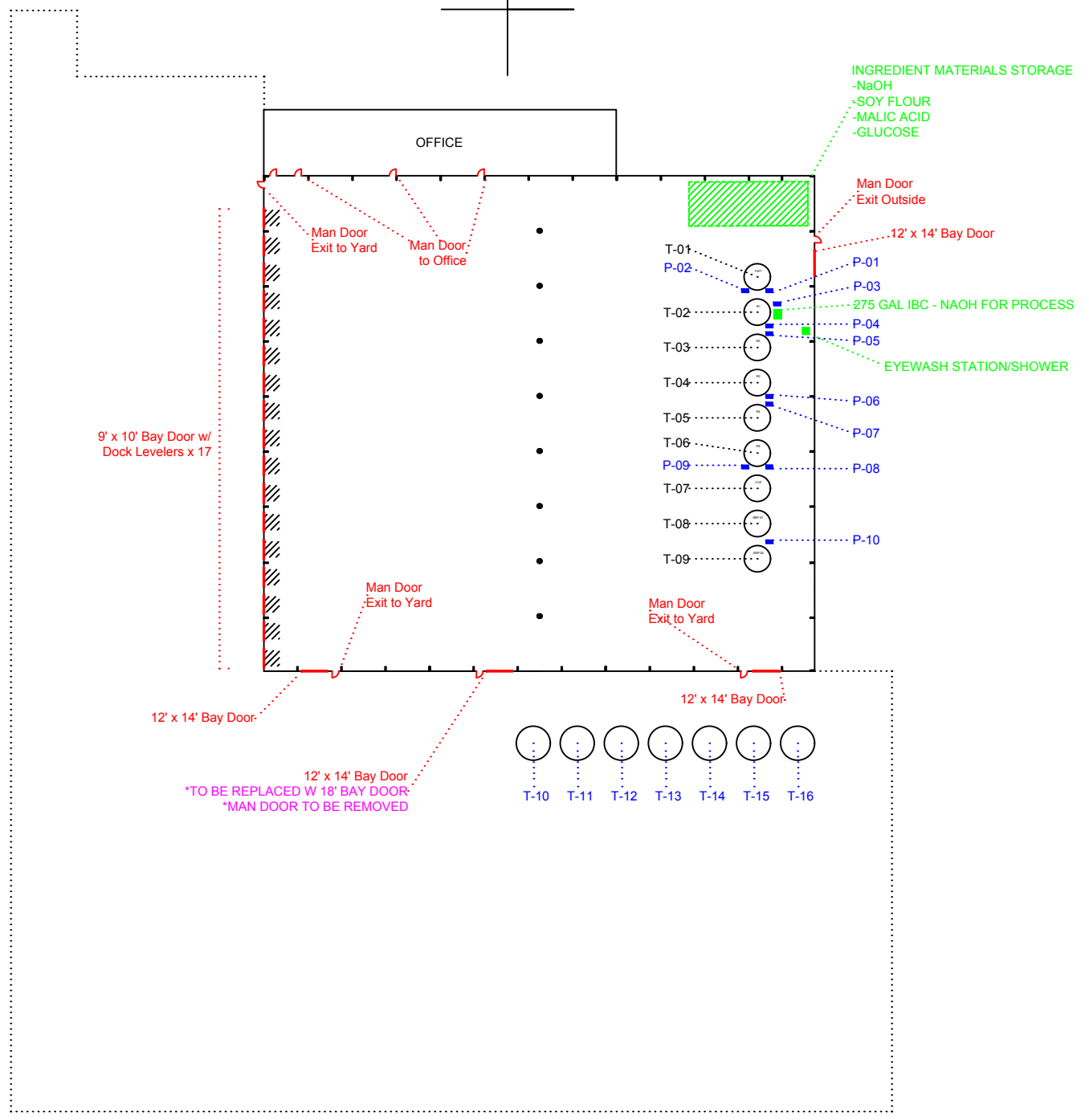
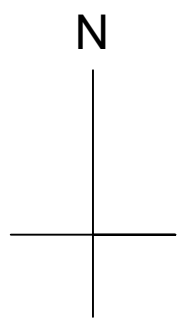


AGRICEN
3650 SHELBY LN
CONCEPT LAYOUT, MK II
4/2/24



Legend for 3650 Shelby Site Layout

CODE	TANK MATERIAL	TYPE	CAPACITY (GAL)	SG RATING	HEIGHT	DIAMETER	DESCRIPTION
T-01	FIBERGLASS	CONE BOTTOM 45	10K	1.5	20'0"	12'0"	FRESHWATER SUPPLY TANK FOR NTS-C, R1
T-02	FIBERGLASS	CONE BOTTOM 45	10K	1.5	20'0"	12'0"	NTS-C REACTOR 1, NAOH INJECTION, DRY INGREDIENT ADDITION
T-03	FIBERGLASS	CONE BOTTOM 45	10K	1.5	20'0"	12'0"	NTS-C REACTOR 2
T-04	FIBERGLASS	CONE BOTTOM 45	10K	1.5	20'0"	12'0"	NTS-C REACTOR 3
T-05	FIBERGLASS	CONE BOTTOM 45	10K	1.5	20'0"	12'0"	NTS-C REACTOR 4
T-06	FIBERGLASS	CONE BOTTOM 45	10K	1.5	20'0"	12'0"	NTS-C REACTOR 5
T-07	FIBERGLASS	CONE BOTTOM 45	10K	1.5	20'0"	12'0"	NTS-C CLARIFIER, FLITE DRIVE
T-08	FIBERGLASS	CONE BOTTOM 45	10K	1.5	20'0"	12'0"	NTS-C ABP COLLECTION TANK 1
T-09	FIBERGLASS	CONE BOTTOM 45	10K	1.5	20'0"	12'0"	NTS-C ABP COLLECTION TANK 2
T-10	FIBERGLASS	FLAT BOTTOM	42K	1.5	30'0"	15'6"	FINAL PRODUCT STORAGE TANK
T-11	FIBERGLASS	FLAT BOTTOM	42K	1.5	30'0"	15'6"	FINAL PRODUCT STORAGE TANK
T-12	FIBERGLASS	FLAT BOTTOM	42K	1.5	30'0"	15'6"	FINAL PRODUCT STORAGE TANK
T-13	FIBERGLASS	FLAT BOTTOM	42K	1.5	30'0"	15'6"	FINAL PRODUCT STORAGE TANK
T-14	FIBERGLASS	FLAT BOTTOM	42K	1.5	30'0"	15'6"	FINAL PRODUCT STORAGE TANK
T-15	FIBERGLASS	FLAT BOTTOM	42K	1.5	30'0"	15'6"	FINAL PRODUCT STORAGE TANK
T-16	FIBERGLASS	FLAT BOTTOM	42K	1.5	30'0"	15'6"	FINAL PRODUCT STORAGE TANK
PUMPS							
CODE	TYPE	PUMP SIZE	VOLTAGE	RUN AMPS			
P-01	SCOT - CENTRIFUGAL	3 X 3	460	2.56			
P-02	APEX 20 - POSITIVE DISPLACEMENT	3/4 X 3/4	460	1.14			
P-03	APEX 10 - POSITIVE DISPLACEMENT	1/2 X 1/2	460	1.21			
P-04	SCOT - CENTRIFUGAL	3 X 3	460	2.56			
P-05	SCOT - CENTRIFUGAL	3 X 3	460	2.56			
P-06	SCOT - CENTRIFUGAL	3 X 3	460	2.56			
P-07	SCOT - CENTRIFUGAL	3 X 3	460	2.56			
P-08	SCOT - CENTRIFUGAL	3 X 3	460	2.56			
P-09	APEX 10 - POSITIVE DISPLACEMENT	3 X 3	460	1.21			
P-10	SCOT - CENTRIFUGAL	3 X 3	460	2.56			

SCREENING PLAN

