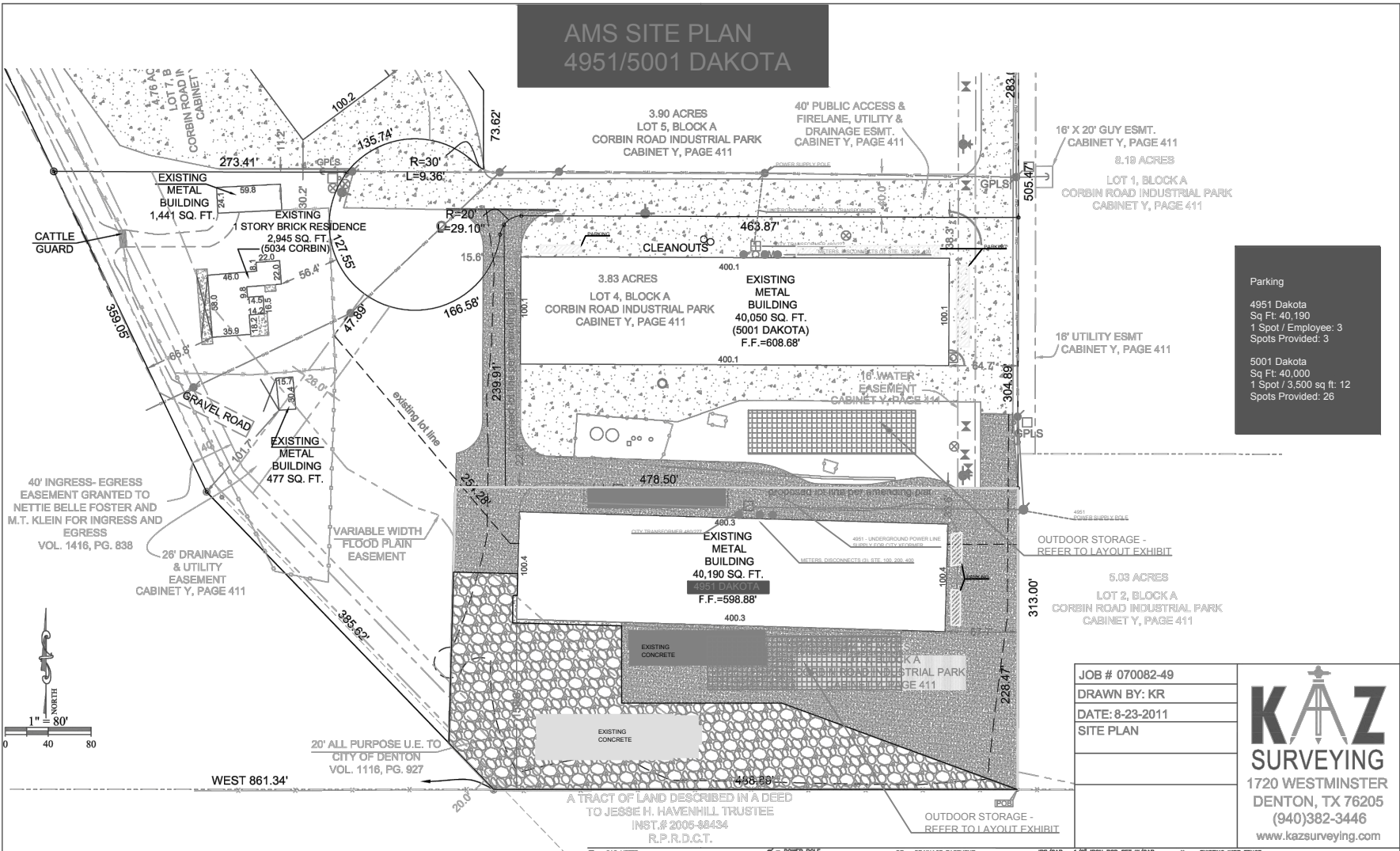


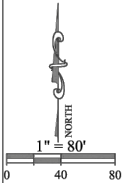
# AMS SITE PLAN 4951/5001 DAKOTA



**Parking**

4951 Dakota  
Sq Ft: 40,190  
1 Spot / Employee: 3  
Spots Provided: 3

5001 Dakota  
Sq Ft: 40,000  
1 Spot / 3,500 sq ft: 12  
Spots Provided: 26



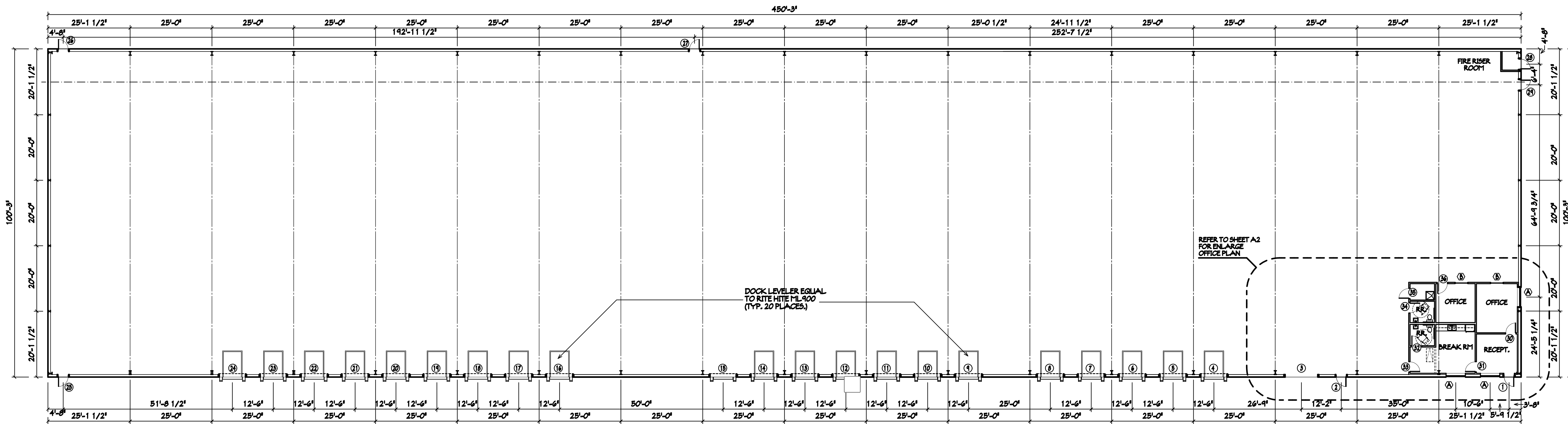
JOB # 070082-49
DRAWN BY: KR
DATE: 8-23-2011
SITE PLAN

**KAZ**  
SURVEYING

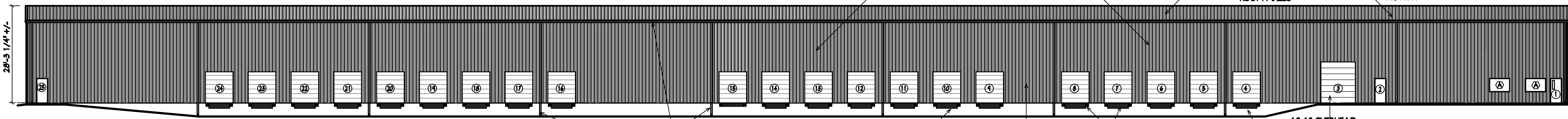
1720 WESTMINSTER  
DENTON, TX 76205  
(940)382-3446  
www.kazsurveying.com

A TRACT OF LAND DESCRIBED IN A DEED  
TO JESSIE H. HAVENHILL, TRUSTEE  
INST. # 2005-38434  
R.P.R.D.C.T.

- |   |  |   |   |  |   |   |  |
|---|--|---|---|--|---|---|--|
| <ul style="list-style-type: none"> <li>⊕ = GAS METER</li> <li>⊕ = BENCHMARK</li> <li>⊕ = FINISHED FLOOR</li> <li>⊕ = CABLE RISER</li> <li>⊕ = LIGHT POLE</li> </ul> | <ul style="list-style-type: none"> <li>BL = BUILDING LINE</li> <li>⊕ = FIRE HYDRANT</li> <li>⊕ = WATER METER</li> <li>⊕ = TELEPHONE RISER</li> <li>⊕ = ELECTRIC RISER</li> </ul> | <ul style="list-style-type: none"> <li>⊕ = POWER POLE</li> <li>⊕ = WATER VALVE</li> <li>⊕ = SANITARY SEWER MANHOLE</li> <li>⊕ = ELECTRIC TRANSFORMER</li> <li>⊕ = UTILITY EASEMENT</li> </ul> | <ul style="list-style-type: none"> <li>DE = DRAINAGE EASEMENT</li> <li>DUE = DRAINAGE &amp; UTILITY EASEMENT</li> <li>PUE = PUBLIC UTILITY EASEMENT</li> <li>MFCP = METAL FENCE CORNER POST</li> <li>WFCP = WOOD FENCE CORNER POST</li> </ul> | <ul style="list-style-type: none"> <li>IRS/CAP = 1/2" IRON ROD SET W/CAP</li> <li>RF = IRON REEF FOUND</li> <li>OHU = OVER-HEAD UTILITY</li> <li>( ) = PLAT OR GRID CALL</li> <li>CM = CONTROLLING MONUMENT</li> </ul> | <ul style="list-style-type: none"> <li>-X- = EXISTING WIRE FENCE</li> <li>-B- = EXISTING WOOD FENCE</li> <li>-C- = CHAIN LINK FENCE</li> <li>-I- = EXISTING IRP &amp; CABLE FENCE</li> <li>OR WROUGHT IRON</li> </ul> | <ul style="list-style-type: none"> <li>▨ = WOOD</li> <li>▨ = CONCRETE</li> <li>▨ = BRICK</li> </ul> | <ul style="list-style-type: none"> <li>⊕ = STONE</li> <li>⊕ = BRICK</li> </ul> |
|---|--|---|---|--|---|---|--|



**FLOOR PLAN**  
SCALE: 1/16" = 1'-0"



**SOUTH ELEVATION**  
SCALE: 1/16" = 1'-0"

**Parking**  
Sq Ft: 42,750  
1 Spot / 3500 sq ft: 13  
Total Spots Provided: 13

**LIST OF DRAWINGS**

- A1 Overall Site and Floor Plan
- A2 Enlarge Floor Plan and Schedules
- A3 Details
- A4 Elevations
- A5 Reflected Ceiling Plan and Details
- A5 Reflected Ceiling Plan and Details
- S1 Foundation Plan and Details
- M2 Mechanical Details, Schedules and Specifications
- E1 Electrical Power and Lighting
- E2 Electrical Details, Schedules and Specifications

**BUILDING DATA TABLE**

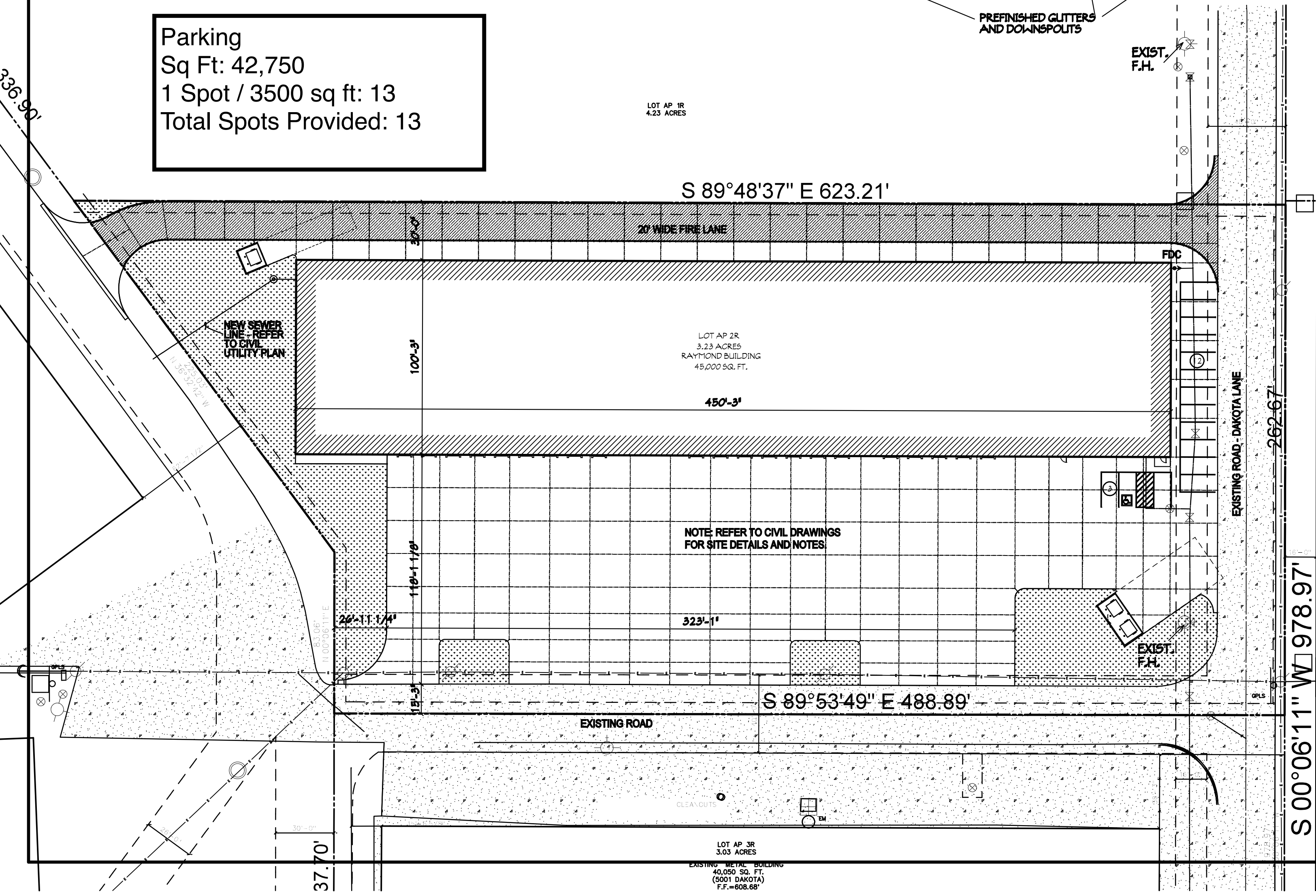
ITEM	
OWNER	Corbin Realty II LP
OWNER REPRESENTATIVE	J.R. Marriott (940) 243-8527
LEGAL DESCRIPTION	Corbin Road Industrial Park Block A Lot 5
BUILDING CONSTRUCTION TYPE	Type III-B (Type F-1)
SQUARE FOOTAGES	Office Area - 981 S.F. Warehouse Area - 44,157 S.F. Total Building Area - 45,138 S.F.
OCCUPANCY LOAD BLDG.	Table 1004.1.1 Per Occupant 981 S.F. / 100 Gross per Occupant = 10 People 44,157 S.F. / 200 Gross per Occupant = 221 People Total Occupant = 231 People
EXIT REQUIREMENTS	a) Table 1005.1 - Egress Width Per Occupant Served/Sprinkled Building. 0.15 Inches/Occupant x 231 People = 2'-11" ADA Requires Minimum of 32" Clear or 36" Door b) Table 1015.1 - Spaces with One Means of Egress. Occupancy for 'F-1' Max. 50 People. c) Travel Distance Table 1016.1 with Sprinkled Building - 250'-0" Max.
THE BUILDING WILL BE EQUIPPED WITH AN APPROVED FIRE SUPPRESSION SYSTEM.	

**CLEARANCES OBSERVED**

ACCESSIBLE SLOPE	<1:20	RAMP SLOPE	1:12
HANDRAILS	36"	GUARDRAILS	42"
RAMP LANDINGS	60"	DRIVE LANES	24"

**CITY OF DENTON ADOPTED CODES**

- 2006 IBC (INTERNATIONAL BUILDING CODE)
- 2006 IMC (INTERNATIONAL MECHANICAL CODE)
- 2006 IPC (INTERNATIONAL PLUMBING CODE)
- 2006 IFC (INTERNATIONAL FIRE CODE)
- 2005 NEC (NATIONAL ELECTRICAL CODE)
- 2009 IECC (INTERN'L ENERGY CONSERVATION CODE)



MICHAEL BATES ARCHITECT  
1300 NORTH LOCUST  
DENTON, TEXAS  
(940) 387-4881  
MICHAEL A. BATES, ARCHITECT  
RUSSELL L. BATES, ARCHITECT

CORBIN REALTY  
**RAYMOND BUILDING**  
BLOCK A, LOT 5 CORBIN ROAD BUSINESS PARK  
5071 DAKOTA LANE DENTON, TEXAS 76207

APR. 25, 2012



REV.

SHEET  
**A1**