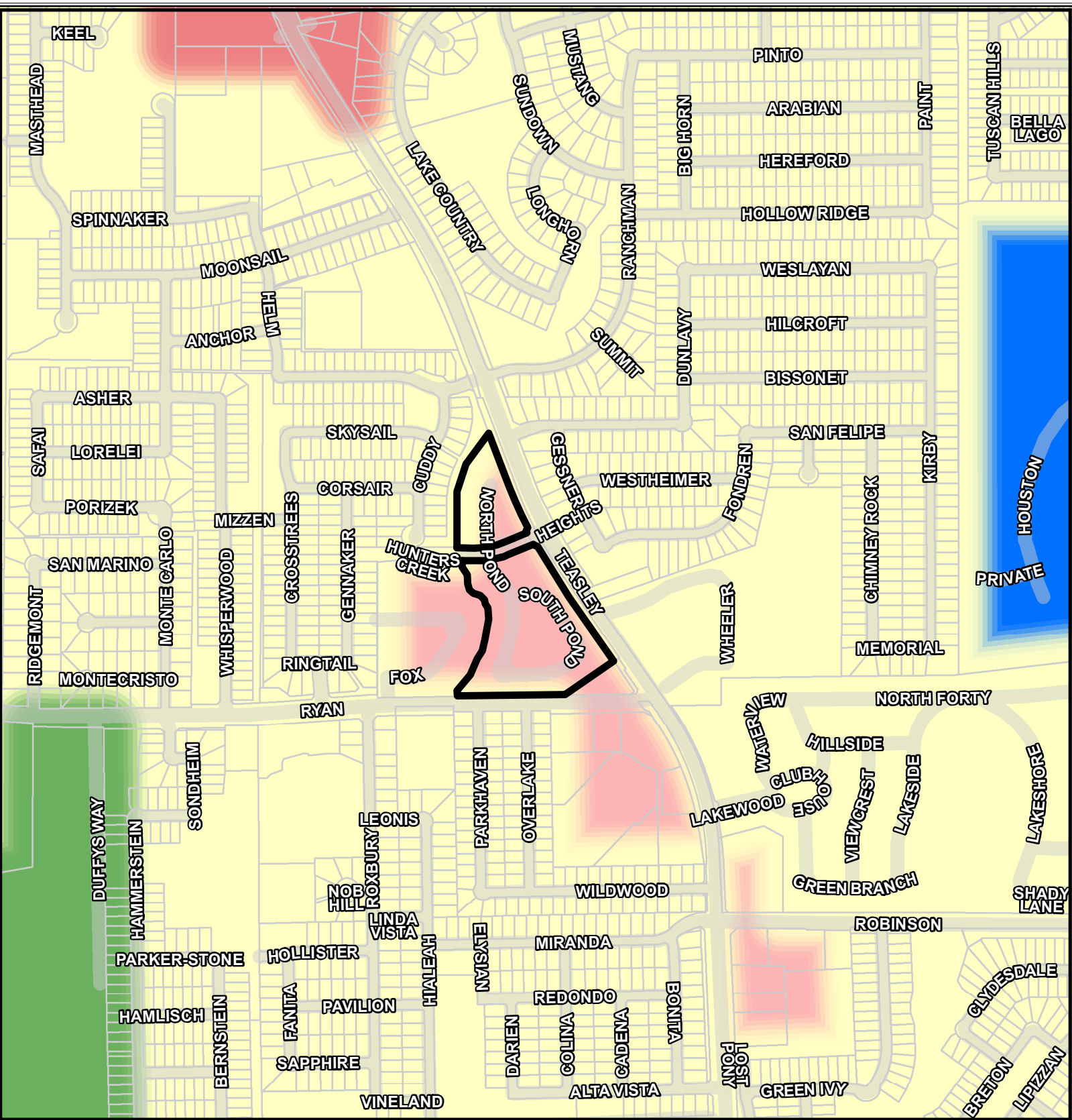


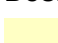



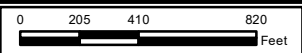
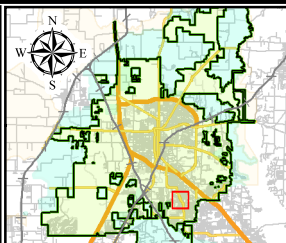


PD22-0010 Future Land Use Map



	SITE	Future Land Use Designation		Neighborhood Mixed Use
	Parcels			Government / Institutional
	Roads			Parks / Open Space
				Community Mixed Use
				



Development Services • GIS

Date: 1/6/2023

This product is for informational purposes and may not have been prepared for or be suitable for legal, engineering, or surveying purposes. It does not represent an on-the-ground survey and represents only the approximate relative location of property boundaries. Although every effort was made to ensure the accuracy of this data, no such guarantee is given or implied. Utilization of this map indicates the understanding that there is no guarantee to the accuracy of this data.